

# HGN-365 IEC 60320 INLET SOCKET WITH SINGLE/DOUBLE FUSE HOLDER, FLANGE MOUNT



## FEATURES

The HGN-365 filter series offers a variety of options with a current rating up to 6A, 250VAC. This power entry module offers industry standard 5 x 20mm fuse with IEC connector. Fully enclosed metal housing prevents input of high frequency noise and protects ultra-sensitive equipment.

These filters are also available for Medical equipment with low leakage current to comply with UL544 & 2602.

## APPLICATIONS

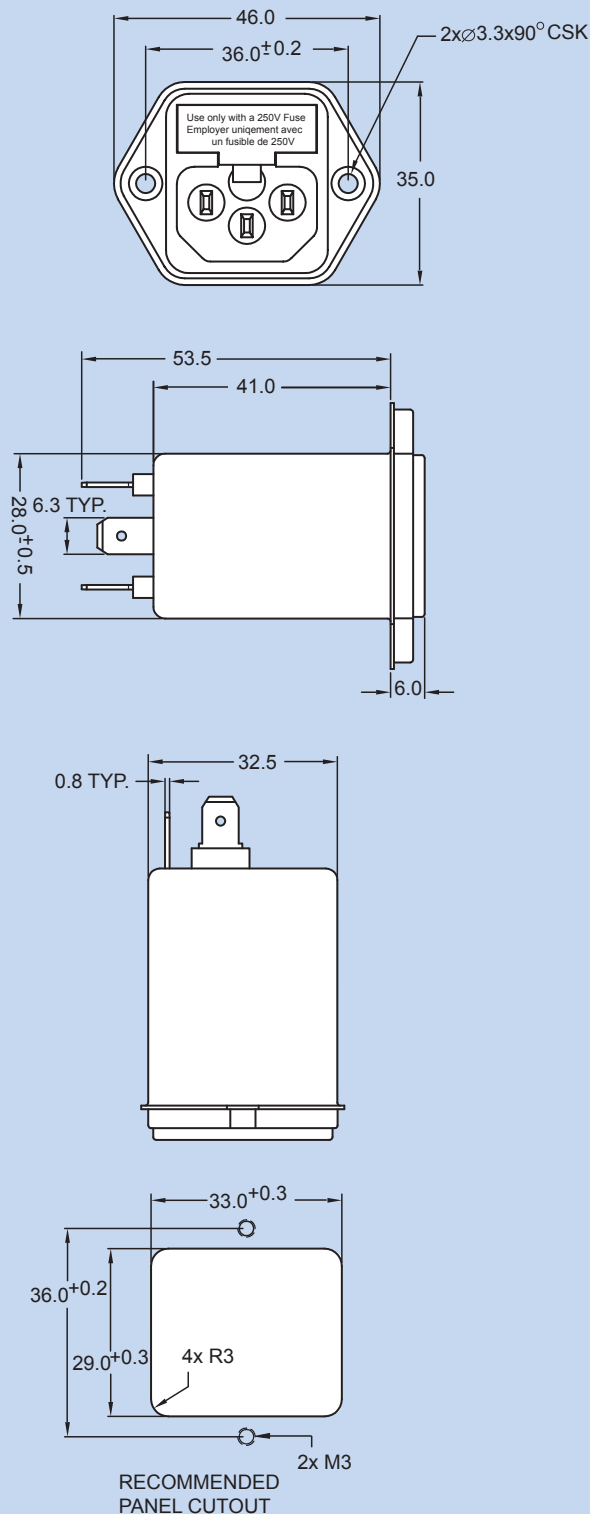
Computer & networking equipment, Measuring & control equipment, Data processing equipment, laboratory instruments, Switching power supplies, other electronic equipment.

## TECHNICAL DATA

- Rated Voltage: 115/250VAC
- Rated Current: 1A, 2A, 4A, 6A
- Power Line Frequency: 50/60Hz
- Max. Leakage Current each Line to Ground:
  - @ 250VAC 50Hz: 0.5mA, max
  - @ 250VAC 50Hz: 2 $\mu$ A\*, max
- Hipot Rating (one minute)
  - Line to Ground: 2250VDC
  - Line to Line: 1450VDC
- Temperature Range: -25C to +85C

\* Medical application






## MECHANICAL DIMENSIONS (Unit: mm)



Specifications subject to change without notice. Dimensions (mm). See Appendix A for recommended power cord. See PDI full line catalog for detailed specifications on power cords.

# HGN-365 Series Example & Ordering Code

HGN-365 - 1 M - F2

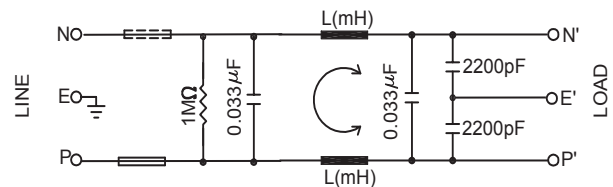
CURRENT RATING (A):	= 1
    	= 2
	= 4
	= 6
SCHMATIC:	STANDARD TYPE = BLANK
	WITHOUT C(Y); C(X) ONLY = M
FUSE OPTION:	1 FUSE (5X20MM), 6.3/0.25 QUICK CONNECT = F1
	2 FUSE (5X20MM), 6.3/0.25 QUICK CONNECT = F2

## Attenuation Tables & Schematics

### Non-Medical Applications

Insertion loss in dB (50 Ohm circuit)

Current Rating	L Value	Comm. Mode(L-G) MHz										Diff. mode(L-L) MHz									
		.01	.05	.1	.15	.5	1	5	10	30	.01	.05	.1	.15	.5	1	5	10	30		
1A	10.3mA	11	22	29	32	50	60	59	79	30	2	4	8	4	48	63	82	70	40		
2A	4.6mA	11	25	31	36	49	57	59	80	42	3	8	10	10	40	60	82	80	40		
4A	1.2mA	3	11	19	21	32	40	49	52	39	2	5	10	11	9	40	80	70	39		
6A	0.8mA	4	10	18	20	30	33	48	61	33	10	12	15	14	9	39	73	73	60		



### Medical Applications

Insertion loss in dB (50 Ohm circuit)

Current Rating	L Value	Comm. Mode(L-G) MHz										Diff. mode(L-L) MHz									
		.01	.05	.1	.15	.5	1	5	10	30	.01	.05	.1	.15	.5	1	5	10	30		
1A	10.3mA	22	32	37	41	51	47	36	31	22	2	5	5	8	48	69	82	74	35		
2A	4.6mA	18	30	35	37	41	42	37	30	22	2	5	5	8	48	69	82	74	35		
4A	1.2mA	10	15	20	22	30	32	32	30	22	5	7	7	5	9	48	82	78	45		
6A	0.8mA	8	14	16	18	26	29	29	29	25	8	14	10	8	9	41	82	80	62		

