

ATLANTIC VERSION TERMINATOR INTERFACE ADAPTER. PART NUMBER, REVISION, DESCRIPTION, FEED TYPE, CONVERT TO, PART NUMBERS REQUIRED. Includes a diagram of the terminator interface adapter.

APPLICATOR DATA. CRIMP SIZE, WIRE INSUL, APPLICATOR INSTRUCTIONS 408-10389.

TERMINAL DATA: MOLEX TERMINAL MOLEX CRIMP SPECIFICATION. TERMINAL NAME: 4.2mm PITCH MINI-FIT TERMINAL. WIRE STRIP LENGTH, INSULATION DIAMETER RANGE.

TERMINALS APPLIED. Table with columns: TE TERMINAL, MOLEX TERMINAL, TE TERMINAL, MOLEX TERMINAL. Lists various terminal combinations.

WIRE SIZE, CRIMP HEIGHT mm [INCH], CRIMP HEIGHT REFERENCE SETTING. Table listing wire specifications.

- RECOMMENDED SPARE PARTS. GREASE BEARING SURFACES LIGHTLY. LUBRICATE DAILY PER THE APPLICATOR INSTRUCTION SHEET SUPPLIED WITH THE APPLICATOR. APPLICATOR SPECIFIC DATA TO BE ENTERED INTO BLANK MEMORY CHIP AT ASSEMBLY.

TERMINAL DATA: MOLEX TERMINAL CMOLEX CRIMP SPECIFICATION. TERMINAL NAME: 4.2mm PITCH MINI-FIT TERMINAL. WIRE STRIP LENGTH, INSULATION DIAMETER RANGE.

TERMINALS APPLIED. Table with columns: TE TERMINAL, MOLEX TERMINAL, TE TERMINAL, MOLEX TERMINAL. Lists various terminal combinations.

- ADJUSTMENT OF THE STRIPPER MAY BE REQUIRED WHEN MOVING THE APPLICATOR BETWEEN BENCH AND LEADMAKER APPLICATIONS. APPLY PART NUMBER 1-23419-5 LOCTITE TO THREADS OF ITEMS 50, 62. APPLY PART NUMBER 2-23419-6 LOCTITE TO THREADS OF ITEMS 242, FOR -6 ONLY APPLY PART NUMBER 1-23419-5 LOCTITE TO THREADS OF ITEMS 37, 50. GREASE THREADS, GROOVE AND O-RING ON ITEMS 35 & 252. MAGNET, ITEM 166 MUST BE ORIENTED CORRECTLY IN ORDER TO PROPERLY ACTUATE THE COUNTER. CRIMP HEIGHT REFERENCE SETTING WAS THE SETTING USED WHEN THE APPLICATOR WAS QUALIFIED AT THE FACTORY. ADJUSTMENT MAY BE NECESSARY WHEN RUNNING APPLICATOR IN THE FIELD. SPARE FEED CAM STORAGE LOCATION REFER TO INSTRUCTION SHEET FOR ADDITIONAL INFORMATION. TO CONVERT THE APPLICATOR TO A NON-CARRIER CUTTING STYLE, REMOVE ITEM 13 AND ATTACH TO THE LOCATION ON THE BACK SIDE OF THE HOUSING. REFER TO INSTRUCTION SHEET FOR ADDITIONAL INFORMATION. WHEN ASSEMBLING -6 NON-CRIMP HEIGHT ADJUST APPLICATOR USE SHIM PACK 2119957-2 TO ALIGN APPLICATOR'S MAXIMUM WIRE CRIMP HEIGHT AT NORMAL TERMINATOR SHUT HEIGHT.

\*WARNING ON INSTALLATION, SET WIRE DISC, ITEM 40 TO LARGEST WIRE SIZE SETTING. USE OF SETTINGS BELOW MINIMUM REQUIRED CRIMP HEIGHT SETTING WILL CAUSE DAMAGE TO CRIMP TOOLING.

Table with columns: PART NO, DESCRIPTION, ITEM NO. Lists spare parts like APPLICATOR SHIM PACK and O-RING.

ATLANTIC VERSION Shown on sheets 1 of 4 & 2 of 4 (Pacific version shown on sheets 3 of 4 & 4 of 4)

REVISIONS table with columns: REVISION, DESCRIPTION, DATE, DWN, APVD. Shows revision A1 for ECR-15-018756 dated 30DEC2015.

Main parts list table with columns: QTY, P, LTM, DESCRIPTION, DATE, DWN, APVD. Lists numerous components like PUSH ROD, BUSHING, FEED CAM, SPRING, etc.

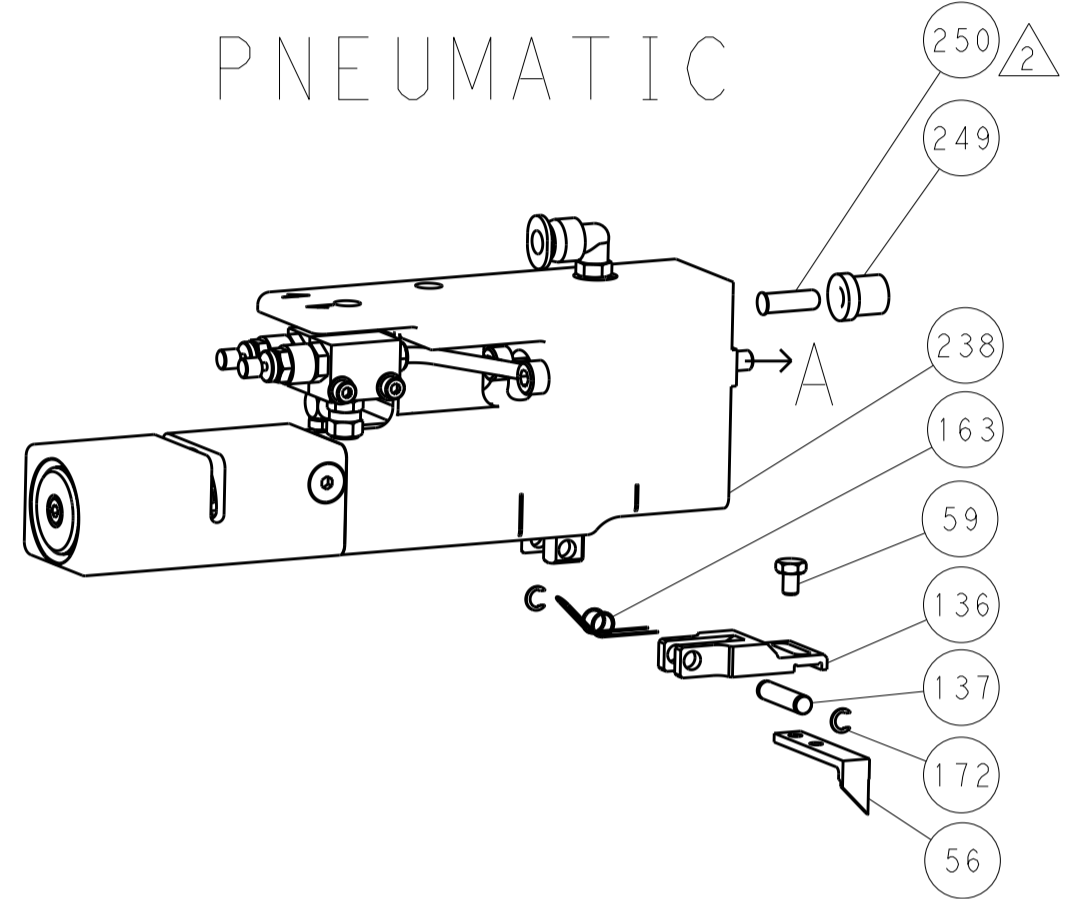
STE logo and product information. DIMENSIONS, TOLERANCES UNLESS OTHERWISE SPECIFIED, MATERIAL, FINISH, WEIGHT, CUSTOMER ACCESSIBLE PRODUCTION DRAWING. Includes a drawing of a wire and dimensions.

LOC		DIST		REVISIONS			
A	66	P	LTM	DESCRIPTION	DATE	DWN	APVD
		-	-	SEE SHEET 1	-	-	-

### FEED TYPE MECHANICAL



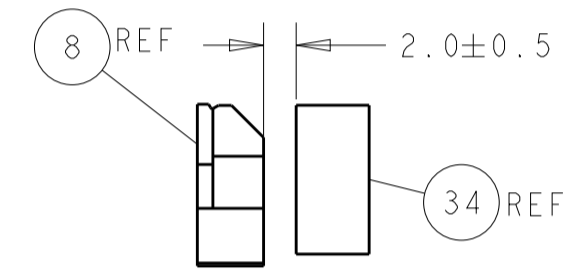
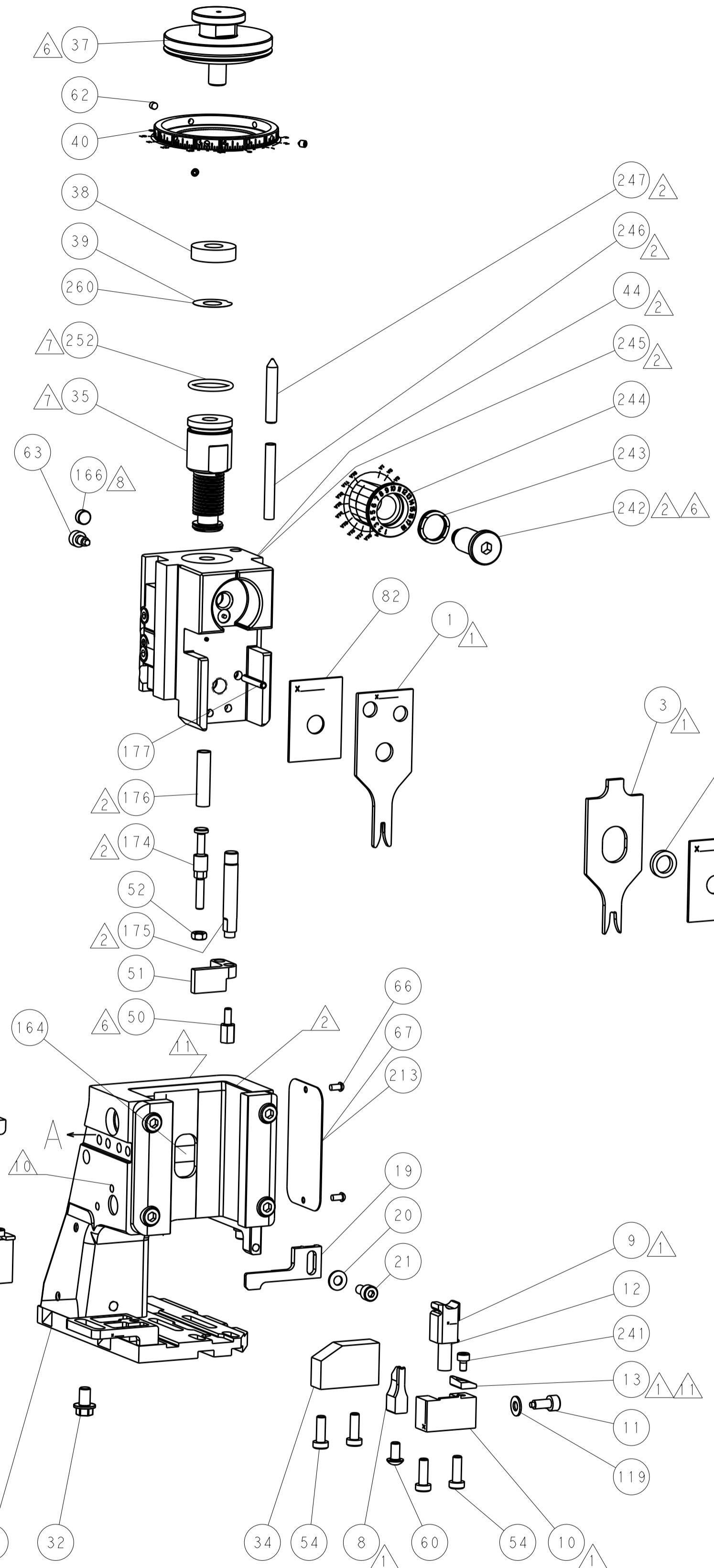
### PNEUMATIC



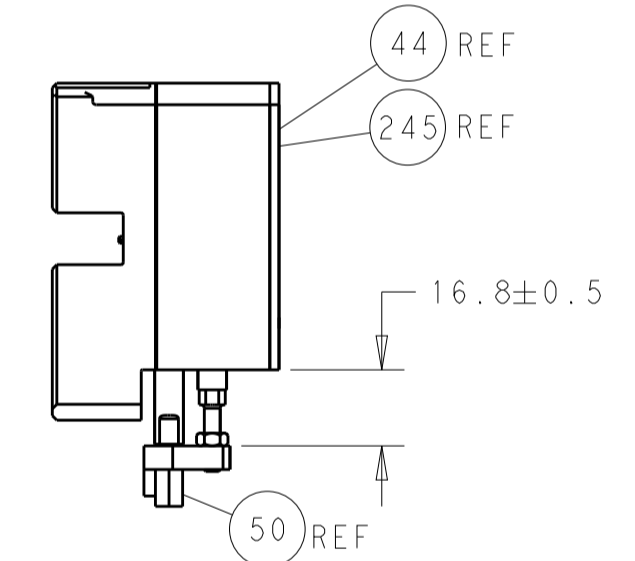
### SERVO LATCH PLATE



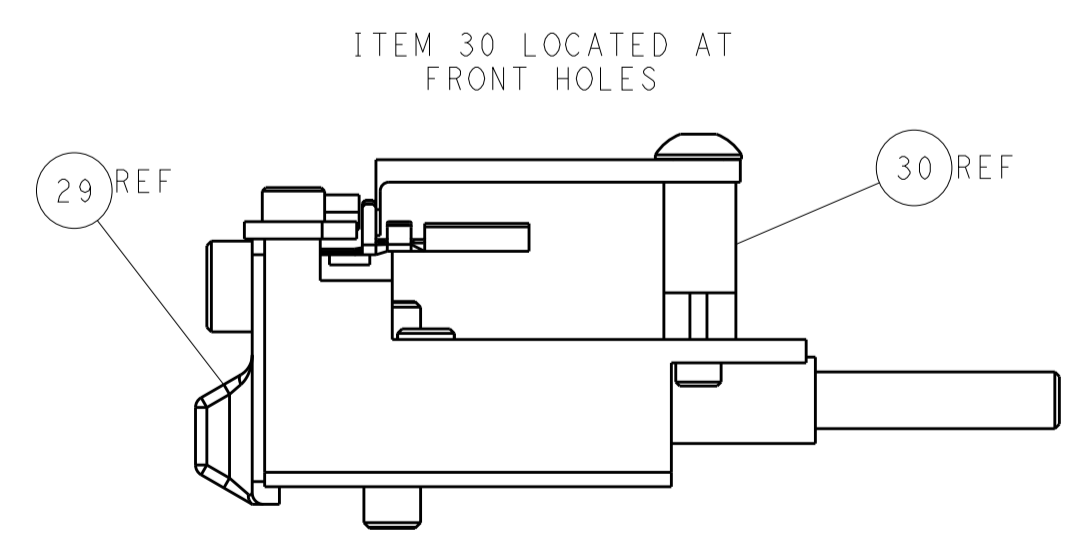
### CAM POSITIONS



TERMINAL SUPPORT LOCATION



HOLDDOWN SET-UP



FEED TRACK POSITION GUIDE BY INSULATION BARREL

**ATLANTIC VERSION**  
 Shown on sheets 1 of 4 & 2 of 4  
 (Pacific version shown on sheets 3 of 4 & 4 of 4)

DIMENSIONS:		TOLERANCES UNLESS OTHERWISE SPECIFIED:		DWN: STAKEM 11OCT2011		TE Connectivity	
mm	0 PLC ±	1 PLC ±	2 PLC ±	3 PLC ±	4 PLC ±	5 PLC ±	Harrisburg, PA 17105-3608
MATERIAL:		FINISH:		CHK: G. BAILEY 11OCT2011		NAME: Ocean Side Feed Applicator	
APVD: T. ELBIN 11OCT2011		PRODUCT SPEC:		APVD: T. ELBIN 11OCT2011		RESTRICTED TO:	
APPLICATION SPEC:		WEIGHT:		SIZE: CAGE CODE: DRAWING NO:		A1 00779 ©=2151015	
CUSTOMER ACCESSIBLE PRODUCTION DRAWING		SCALE: 1:2		SHEET 2 OF 4		REV A	

APPLICATOR STYLE CONVERSION CHART. Table with columns: CONVERT TO, PART NUMBERS REQUIRED. Includes rows for PNEUMATIC FEED, SERVO LATCH PLATE, SMART APPLICATOR, MECHANICAL FEED, and NONE.

APPLICATOR DATA. Table with columns: CRIMP, SIZE, TYPE. Includes WIRE (1.58 mm), INSUL (3.17 mm), and APPLICATOR INSTRUCTIONS (408-10389).

TERMINAL DATA: MOLEX TERMINAL MOLEX CRIMP SPECIFICATION. Table with columns: TERMINAL NAME, WIRE STRIP LENGTH, INSULATION DIAMETER RANGE.

TERMINAL APPLICATION SPECIFICATION MOLEX 63900-2600 REV J. Includes a diagram of a terminal.

TERMINALS APPLIED. Large table with columns: TE TERMINAL, MOLEX TERMINAL, TE TERMINAL, MOLEX TERMINAL. Lists various terminal combinations.

WIRE SIZE, CRIMP HEIGHT, CRIMP HEIGHT REFERENCE SETTING. Table with columns: WIRE SIZE, CRIMP HEIGHT mm [INCH], CRIMP HEIGHT REFERENCE SETTING.

TERMINAL DATA: MOLEX TERMINAL MOLEX CRIMP SPECIFICATION. Table with columns: TERMINAL NAME, WIRE STRIP LENGTH, INSULATION DIAMETER RANGE.

TERMINAL APPLICATION SPECIFICATION MOLEX 63900-2600 REV J. Includes a diagram of a terminal.

TERMINALS APPLIED. Large table with columns: TE TERMINAL, MOLEX TERMINAL, TE TERMINAL, MOLEX TERMINAL. Lists various terminal combinations.

WIRE SIZE, CRIMP HEIGHT, CRIMP HEIGHT REFERENCE SETTING. Table with columns: WIRE SIZE, CRIMP HEIGHT mm [INCH], CRIMP HEIGHT REFERENCE SETTING.

- RECOMMENDED SPARE PARTS
GREASE BEARING SURFACES LIGHTLY
3. LUBRICATE DAILY PER THE APPLICATOR INSTRUCTION SHEET SUPPLIED WITH THE APPLICATOR.
4. APPLICATOR SPECIFIC DATA TO BE ENTERED INTO BLANK MEMORY CHIP AT ASSEMBLY...
5. ADJUSTMENT OF THE STRIPPER MAY BE REQUIRED WHEN MOVING THE APPLICATOR BETWEEN BENCH AND LEADMAKER APPLICATIONS.
6. APPLY PART NUMBER 1-23419-5 LOCTITE TO THREADS OF ITEMS 50, 62.
7. GREASE THREADS, GROOVE AND O-RING ON ITEMS 139 & 152.
8. MAGNET MUST BE ORIENTED CORRECTLY IN ORDER TO PROPERLY ACTUATE THE COUNTER.
9. CRIMP HEIGHT REFERENCE SETTING WAS THE SETTING USED WHEN THE APPLICATOR WAS QUALIFIED AT THE FACTORY...
10. SPARE FEED CAM STORAGE LOCATION REFER TO INSTRUCTION SHEET FOR ADDITIONAL INFORMATION.
11. TO CONVERT THE APPLICATOR TO A NON-CARRIER CUTTING STYLE...

\*WARNING
ON INSTALLATION, SET WIRE DISC, ITEM 40 TO LARGEST WIRE SIZE SETTING. USE OF SETTINGS BELOW MINIMUM REQUIRED CRIMP HEIGHT SETTING WILL CAUSE DAMAGE TO CRIMP TOOLING.

PACIFIC VERSION
Shown on sheets 3 of 4 & 4 of 4
(Atlantic version shown on sheets 1 of 4 & 2 of 4)

REVISIONS. Table with columns: REVISIONS, DATE, DWN, APVD. Includes revision 1: SEE SHEET 1.

Large table with columns: QTY, PART NO, DESCRIPTION, ITEM NO. Lists numerous parts and their quantities, such as FINE ADJUST HEAD ASM, PUSH ROD, BUSHING, etc.

Product information table including DIMENSIONS, TOLERANCES UNLESS OTHERWISE SPECIFIED, MATERIAL, FINISH, WEIGHT, and CUSTOMER ACCESSIBLE PRODUCTION DRAWING.

REV A		REVISIONS				
LOC	DIST	P. LTH	DESCRIPTION	DATE	DWN	APVD
A	66	-	SEE SHEET 1	-	-	-

# FEED TYPE MECHANICAL



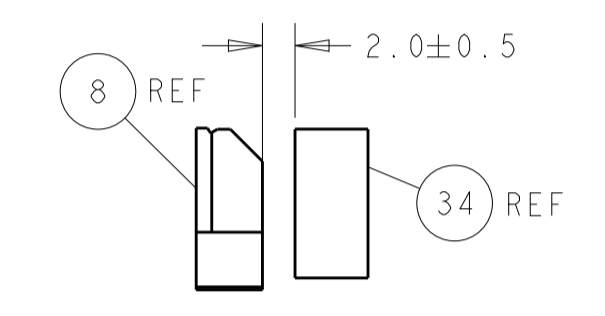
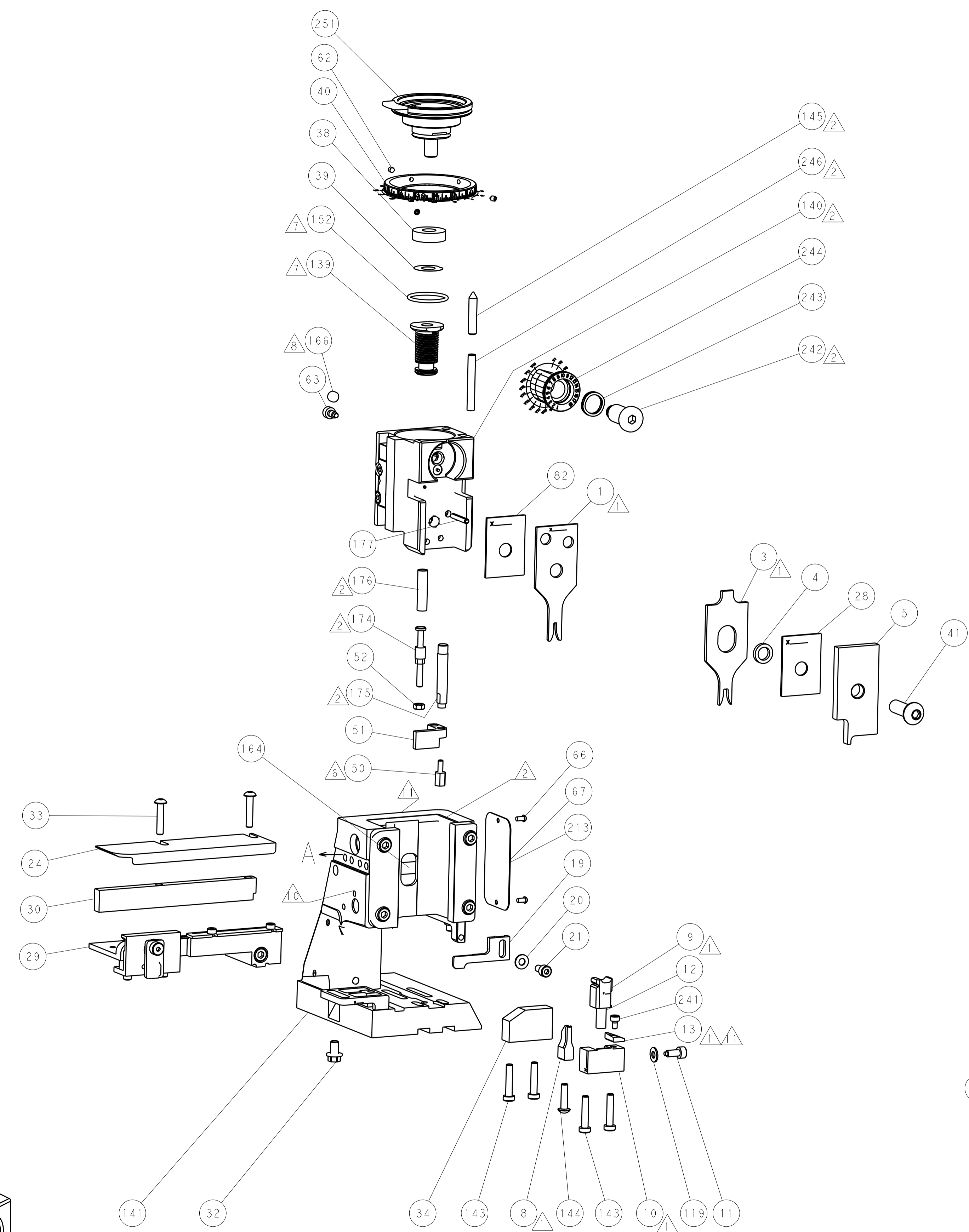
# PNEUMATIC



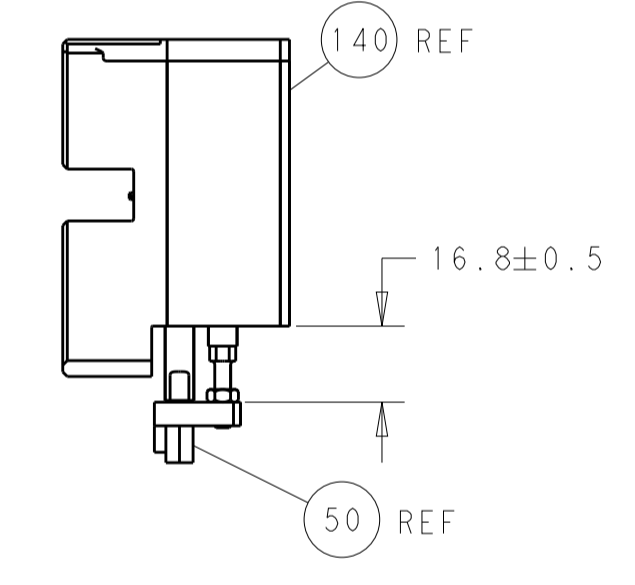
# SERVO LATCH PLATE



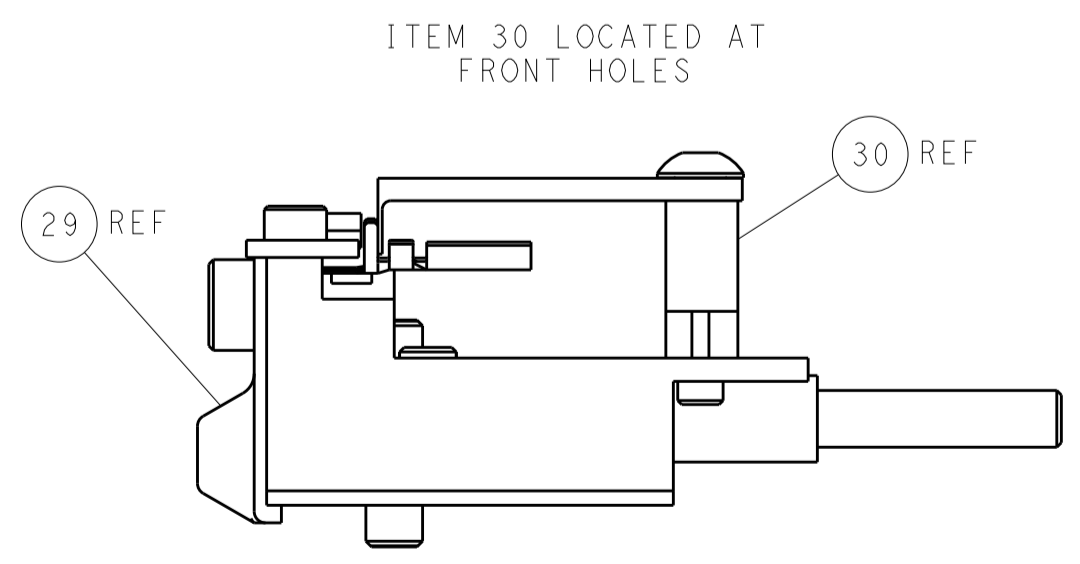
# CAM POSITIONS



TERMINAL SUPPORT LOCATION



HOLDDOWN SET-UP



FEED TRACK POSITION  
GUIDE BY INSULATION BARREL

**PACIFIC VERSION**  
 Shown on sheets 3 of 4 & 4 of 4  
 (Atlantic version shown on sheets 1 of 4 & 2 of 4)

DIMENSIONS:		TOLERANCES UNLESS OTHERWISE SPECIFIED:		DWN: R. STAKEM 11OCT2011		TE Connectivity	
mm	0 PLC ±	1 PLC ±	2 PLC ±	3 PLC ±	4 PLC ±	Harrisburg, PA 17105-3608	
MATERIAL:		FINISH:		CHK: G. BAILEY 11OCT2011		NAME: Ocean Side Feed Applicator	
				APVD: T. ERLIN 11OCT2011		SIZE: CAGE CODE: DRAWING NO: 00779 ©=2151015	
				PRODUCT SPEC:		RESTRICTED TO:	
				APPLICATION SPEC:		SCALE: 1:2 SHEET 4 OF 4 REV A	
				WEIGHT:		CUSTOMER ACCESSIBLE PRODUCTION DRAWING	