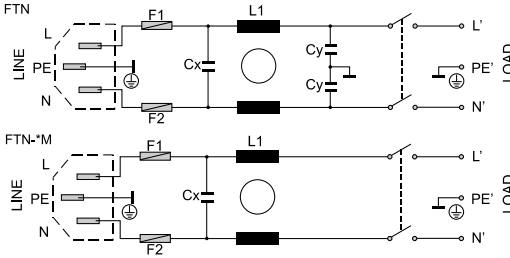


# FTN

## IEC Connector Filter

### Electrical schematics



RFI Power Line Filters

### General Specifications

Maximum operating voltage: 250Vac.  
 Operating frequency: DC - 60Hz.  
 Hipot test voltage: L/N->PE: 1800Vac 2s.  
 (2500Vac for M version)  
 L->N: 1700 Vdc 2s.

Application class: HPF Acc. TO DIN 40040  
 (-25°C/+85°C/95% RH, 30d).  
 Flammability class: UL 94 V2.

### IEC connector filter

With IEC connector, fuses and switch.  
 General purpose filter.  
 M: For electromedical applications.

### Product List

TYPE	I	L1	CX	CY	HOUSING	L.CURRENT	CONNECTION	WEIGHT ±g
FTN-1Z	1 Amp	2 mH					FASTON 6,3mm	110
FTN-3Z	3 Amp	1,3 mH	100 nF	2,2 nF	250	0,21mA	FASTON 6,3mm	110
FTN-6Z	6 Amp	0,8 mH					FASTON 6,3mm	110
FTN-1ZM	1 Amp	2 mH					FASTON 6,3mm	110
FTN-3ZM	3 Amp	1,3 mH	100 nF	-	250	5µA	FASTON 6,3mm	110
FTN-6ZM	6 Amp	0,8 mH					FASTON 6,3mm	110

### Insertion Loss

----- ASYM  
 ——— SYM

