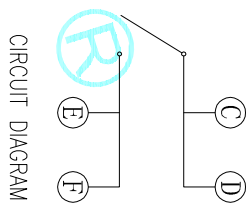
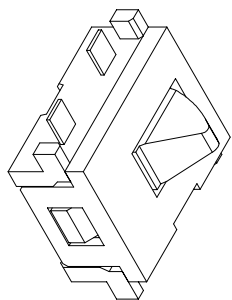
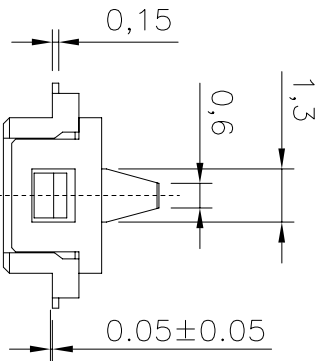
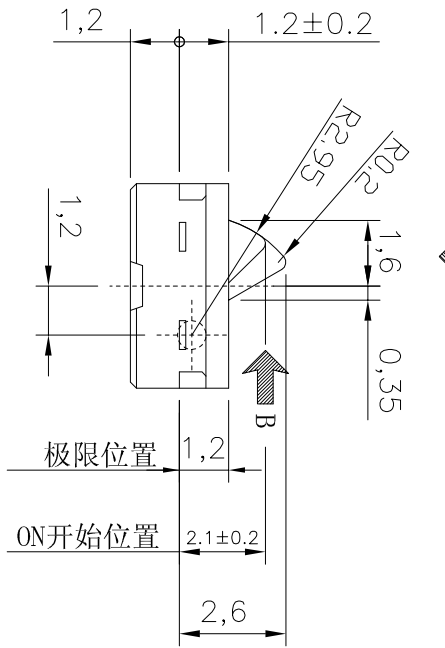
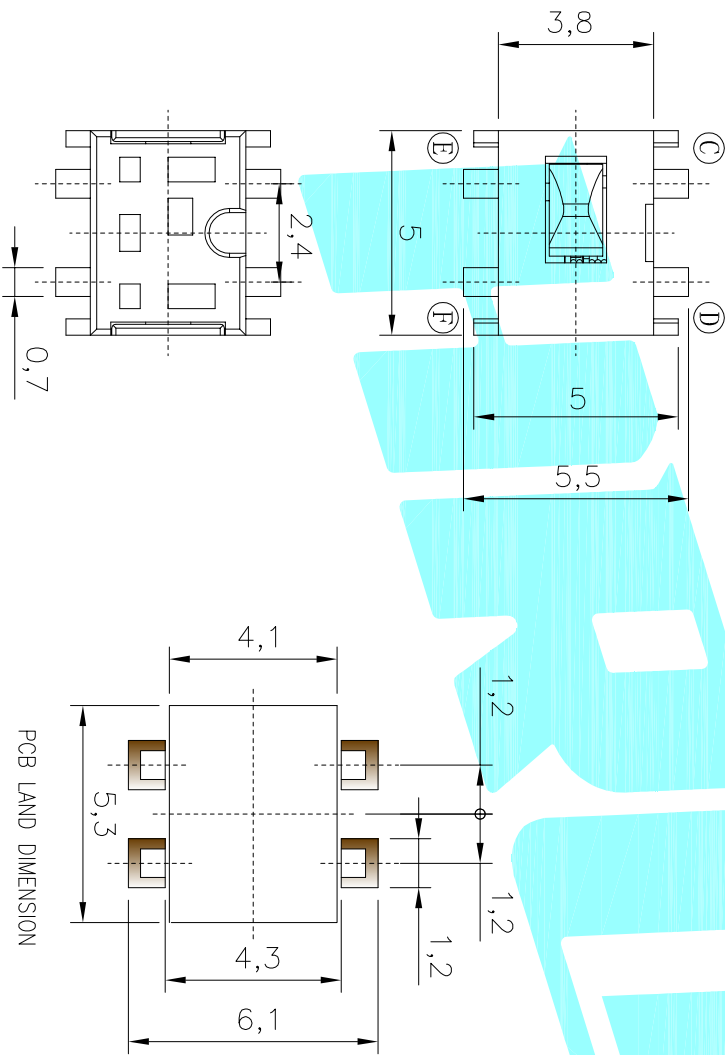


动作方向  
A



技术要求:

1. 额定负荷: DC 5V 0.1~5mA
2. 绝缘电阻:  $\geq 100M\Omega$
3. 耐电压: AC100V 50Hz/1min
4. 电器寿命: 100000次
5. 环境温度:  $-10^{\circ} \sim +60^{\circ}$
6. 相对湿度:  $40^{\circ}C \leq 95\%$
7. 接触电阻:  $\leq 1\Omega$
8. 接触行程:  $0.5 \pm 0.2$
9. 动作力:  $\leq 0.3N(31gf)$
10. 各零件无明显飞边, 配合要紧密, 不得有明显松动。



ITEM	PART NAME	TER'NO.	QTY.	MATERIAL	FINISHING	REMARK
⑤	Center Spring	—	1	Phosphor Bronze	Au Plated	—
④	Base	—	1	PA	Black	—
③	Terminal	—	4	Phosphor Bronze	Au Plated	—
②	Keystore	—	1	PA	Natural	—
①	Cover	—	1	PA	Black	—

APPROVALS		DATE	TITLE:	
DRAWN	J.X.Zhong	2018/8/1	ELECTRONICS CO.,LTD	
CHECKED			DETECTOR SWITCHS	
APPROVALS			PART NO.	K5-1632FN-01

ECN NO.	REV.	DATE.	DESCRIPTION.	CHANGE.	CHECK.	APPRO.	TOLERANCES ARE	ANGLE	UNIT:	SCALE:	PROJ:	SHEET
	A		NEW				30~以上 10~30 5~10 ~5	$\pm 0.30$ $\pm 0.20$ $\pm 0.15$ $\pm 0.10$	mm	1:1	PROJ:	1 OF 1