

# SPRING & BUTTON CONTACTS

# BATTERY CONTACTS FOR MOLDED CASES

- Economical and reliable contacts are ideal for molded cases with self contained battery compartments
- "Solder tab" design for either wire lead or PC mounting
- Unique spring contacts adjust to variations in battery lengths
- Reliable spring contacts assure low contact resistance and a dependable connection
- Space saving, economical, excellent mechanical construction

**MATERIAL:**

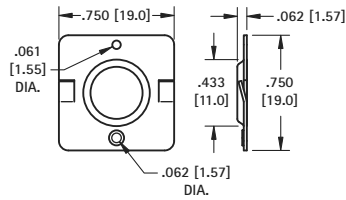
**Plate:** .020 (.51) Steel, Nickel Plate **Spring:** Spring Steel, Nickel Plate



Refer to page 35 for Battery Contact Layout & Mounting Details

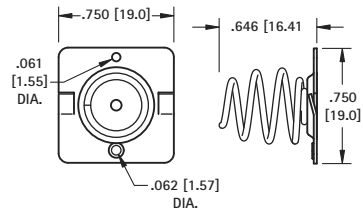
**"C" CELL**

(+) POSITIVE BUTTON



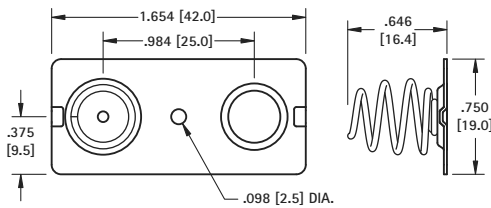
CAT. NO. 5240

(-) NEGATIVE SPRING



CAT. NO. 5241

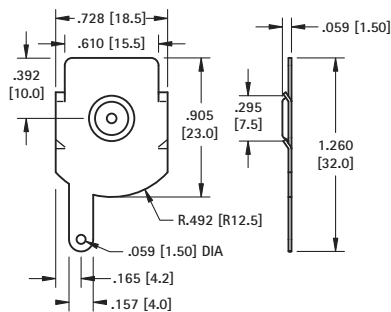
DUAL CONTACT



CAT. NO. 5242 Left or Right

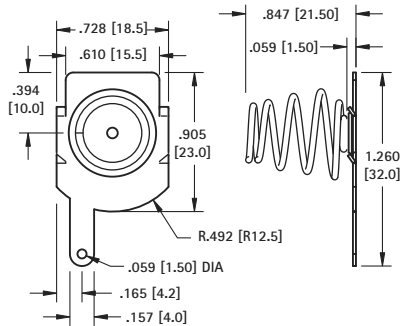
**"D" CELL**

(+) POSITIVE BUTTON



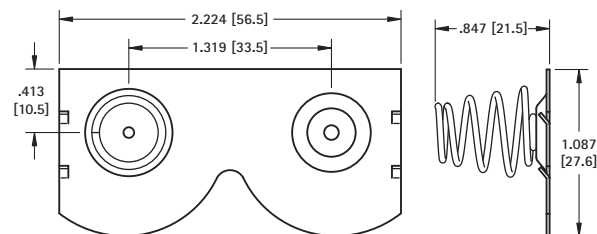
CAT. NO. 5250

(-) NEGATIVE SPRING



CAT. NO. 5251

DUAL CONTACT



CAT. NO. 5253 Left

CAT. NO. 5252 Right (Shown)

# Mouser Electronics

Authorized Distributor

Click to View Pricing, Inventory, Delivery & Lifecycle Information:

[Keystone Electronics:](#)

[5240](#) [5241](#) [5242](#) [5250](#) [5251](#) [5252](#) [5253](#)