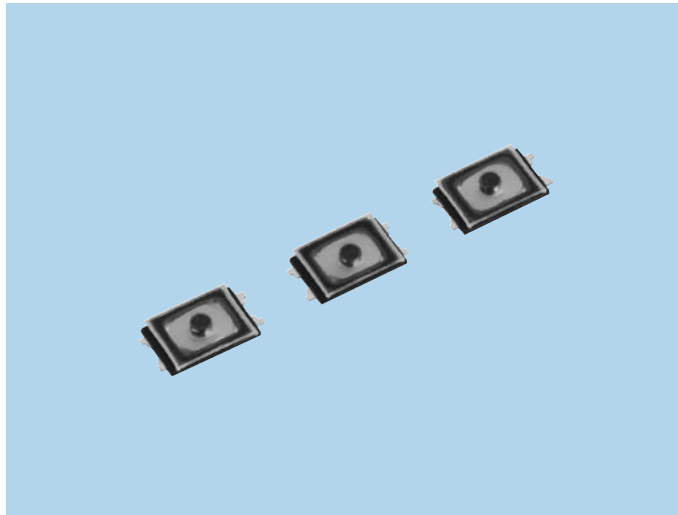


# Small Type Tactile Switches STI Series

## FEATURES

1. Ultra small size. (2.5×1.6mm)
2. Good feeling with the actuator.
3. High reliability with the small, thin, and dustproof design.
4. IPX8 water resistance.

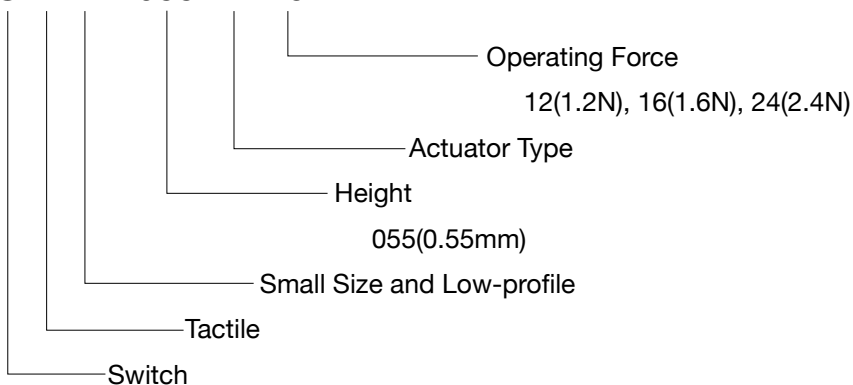


## APPLICATIONS

Mobile Phones, Smartphones, Digital Cameras, Game Machines and etc.

## MODEL NAME CODE

**S T I - 055 A 16 AX**



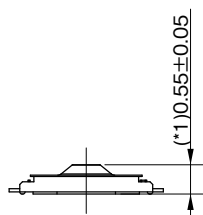
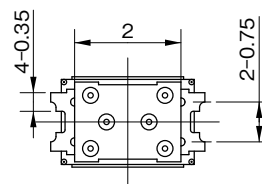
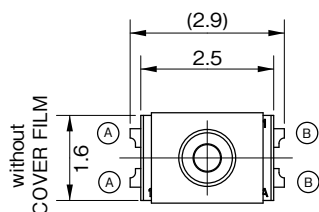
## SPECIFICATIONS

Electrical Characteristics	Rating (Resistive load)	DC15V, 20mA
	Contact Resistance	1Ω or less
	Insulation Resistance	10MΩ or more
	Withstand Voltage	1 minute at AC 100V
Life	STI-055A12AX	500,000 times
	STI-055A16AX	500,000 times
	STI-055A24AX	200,000 times
Water Resistance	Protective resistance	IPX8

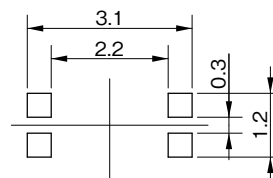
## TYPE

Model Name Code	Model Name	Operating Force	Boss	Pcs/Reel
STI-055A12AX	R66 8048	1.2N	Without	25,000
STI-055A16AX	R66 8049	1.6N	Without	25,000
STI-055A24AX	R66 8050	2.4N	Without	25,000

## DIMENSIONS

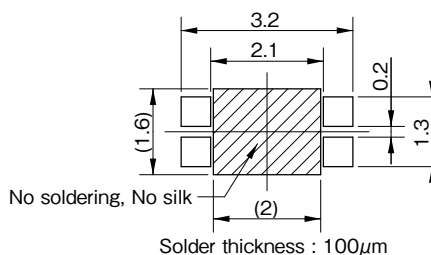


Reference solder mask stencil dimension

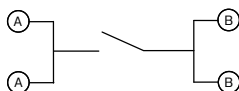


(\*1) The switch height shall be measured with applying 5 gram load.

Reference land dimension



Circuit diagram



Unit: mm