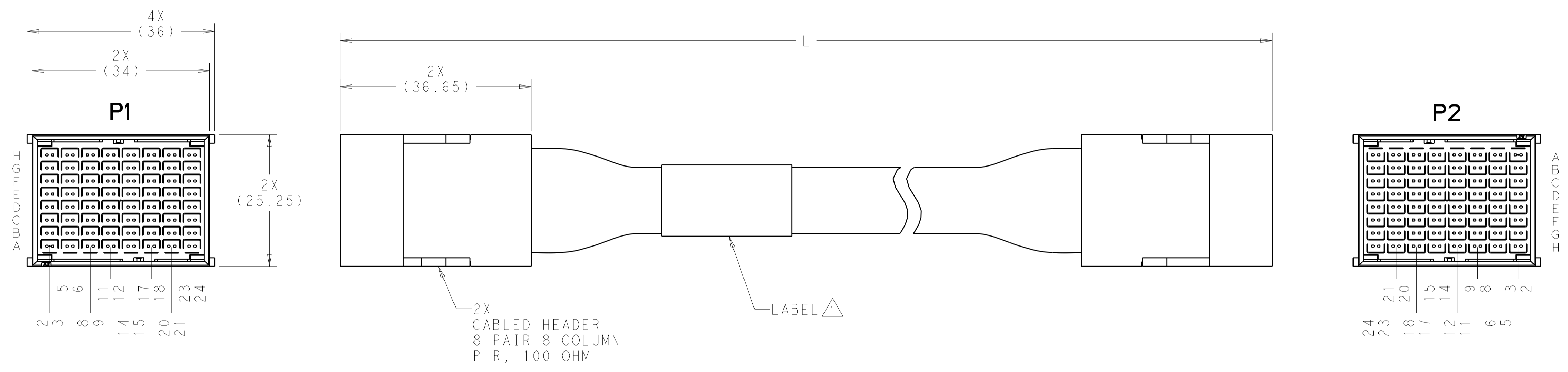


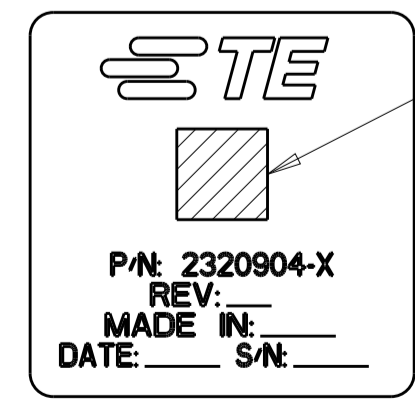
REVISIONS				
P.	LTR.	DESCRIPTION	DATE	APVD.
1		PROPOSED	07JUN2017	REH KS



2X
 CABLED HEADER
 8 PAIR 8 COLUMN
 PiR, 100 OHM

LABEL

LABEL INFORMATION:



BARCODE INFO:
 2320904-dxxwyysss
 d=DASH NUMBER
 xx=MANUFACTURING SITE
 US=UNITED STATES, CN=CHINA, MX=MEXICO
 ww=WEEK
 yy=YEAR
 sss=SERIAL NUMBER 000 THRU 999

- EACH CABLE ASSEMBLY TESTED FOR CONTINUITY, OPENS AND SHORTS.
- SEE SHEET 2 FOR WIRING DIAGRAM.
- EACH HIGH SPEED CABLET TESTED ON NETWORK ANALYZER, SERIALIZED, AND DATA SAVED.

THIS PRODUCT HAS NOT COMPLETED VALIDATION AND QUALIFICATION TESTING

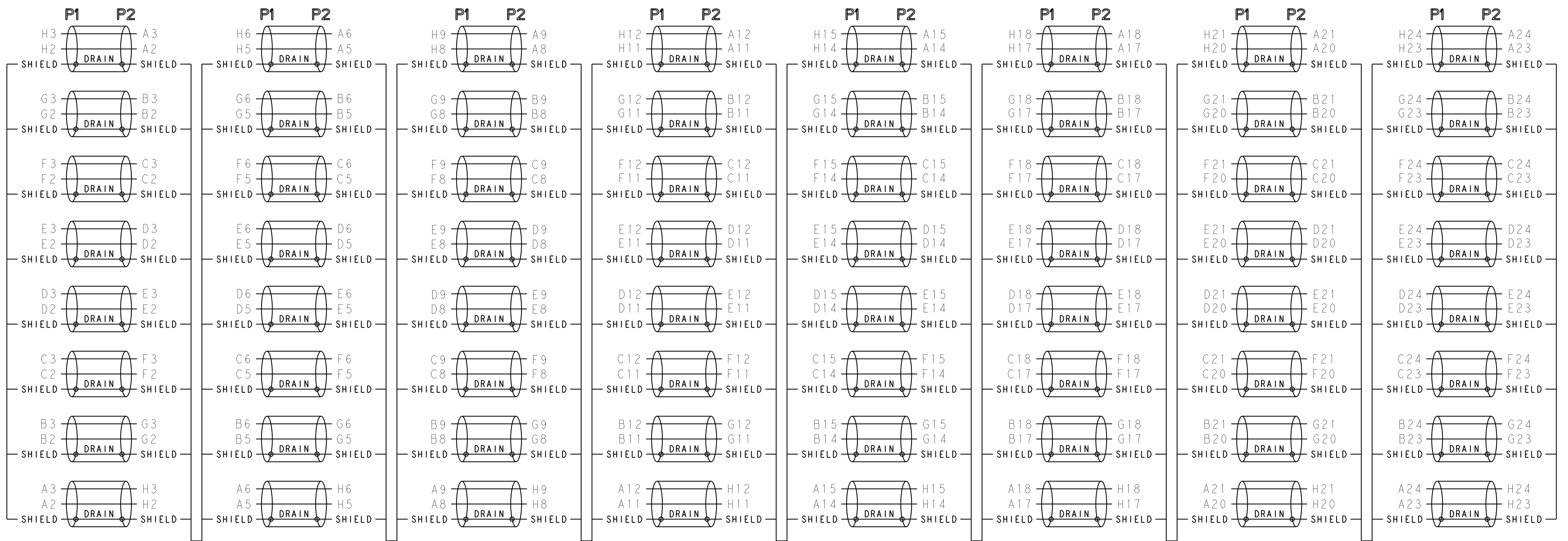
PRELIMINARY NOT RELEASED FOR PRODUCTION

1508	6-2320904-6
1008	5-2320904-6
508	3-2320904-6
L±3	PART NUMBER

DIMENSIONS:		TOLERANCES UNLESS OTHERWISE SPECIFIED:		APVD.		NAME	
mm	0 PLC	±		OWN	DATE	TE Connectivity	
	1 PLC	±		CHK		CABLE ASSEMBLY, 100 OHM, PiR, 8 PAIR, 8 COLUMN, 20G, 2-2 WIRING, A-H	
	2 PLC	±		CHK		SIZE CAGE CODE DRAWING NO RESTRICTED TO	
	3 PLC	±		CHK		A1 - C=2320904	
	4 PLC	±		CHK		Customer Drawing	
	ANGLES	±		WEIGHT		SCALE 2:1 SHEET 1 OF 2 REV 1	

REVISIONS				
P.	LTN.	DESCRIPTION	DATE	APVD.
-	-	SEE SHEET 1	-	-

WIRING DIAGRAM



THIS PRODUCT HAS NOT COMPLETED VALIDATION AND QUALIFICATION TESTING

PRELIMINARY NOT RELEASED FOR PRODUCTION

THIS DRAWING IS A CONTROLLED DOCUMENT.		DWN: HAMNER 07JUN2017 CHK: K. SAMMON 08JUN2017 APVD: K. SAMMON 08JUN2017	TE Connectivity
DIMENSIONS: mm	TOLERANCES UNLESS OTHERWISE SPECIFIED: 0 PLC ± 1 PLC ± 2 PLC ± 3 PLC ± 4 PLC ± ANGLES ± MATERIAL: - FINISH: -	NAME: CABLE ASSEMBLY, 100 OHM, PiR, 8 PAIR, 8 COLUMN, 20G, 2-2 WIRING, A-H SIZE: A1 CAGE CODE: - DRAWING NO: C=2320904 WEIGHT: - Customer Drawing	