




Features

- Size: 11.8 mm diameter, 17.5 mm length
- High power rating
- High voltage range
- RoHS compliant*
-  UL Recognized**

Applications

- Industrial equipment/electronics
- Telecommunications electronics

2097 Series High-Voltage 2-Electrode Gas Discharge Tube

Characteristics

Test Methods per ITU-T (CCITT) K.12 and IEC 61643-311.

Characteristic	Model No.					
	2097-100**	2097-120	2097-140	2097-160	2097-200	2097-220
DC Sparkover $\pm 20\%$ @ 100 V/s	1000 V	1200 V	1400 V	1600 V	2000 V	2200 V
Impulse Sparkover ⁽¹⁾						
100 V/ μ s	< 1500 V	< 1800 V	< 2000 V	< 2300 V	< 2600 V	< 2700 V
1000 V/ μ s	< 1700 V	< 2000 V	< 2200 V	< 2500 V	< 2700 V	< 2800 V

⁽¹⁾ Impulse Sparkover voltage is defined as typical values of distribution.

Insulation Resistance (IR) ⁽²⁾	500/1000 Vdc	> 10 G Ω
Glow Voltage	10 mA	~ 60 V
Arc Voltage	1 A	~ 15 V
Glow-Arc Transition Current		< 1 A
Capacitance	1 MHz	< 1.0 pF
Impulse Discharge Current	25,000 A, 8/20 μ s	1 operation
	20,000 A, 8/20 μ s	5 operations
Alternating Discharge Current	20 Arms, 50 Hz, 1 second	1 operation min.
	120 Arms, 50 Hz, 9 cycles	1 operation min.
Impulse Life	500 A, 10/1000 μ s	> 400 operations
Operating Temperature		-30 to +85 °C
Storage Temperature		-40 to +115 °C
Climatic Category (IEC 60068-1)		40 / 90 / 21

Notes:

⁽²⁾ Insulation Resistance measured at 1000 V for GDTs with >2000 V DCBD.

• At delivery AQL 0.65 Level II, DIN ISO 2859.

** UL Recognized components, UL File E313168. Model 2097-100 is not UL Recognized.

BOURNS®

Asia-Pacific: Tel: +886-2 2562-4117 • Fax: +886-2 2562-4116

EMEA: Tel: +36 88 520 390 • Fax: +36 88 520 211

The Americas: Tel: +1-951 781-5500 • Fax: +1-951 781-5700

www.bourns.com

*RoHS Directive 2002/95/EC Jan. 27, 2003 including annex and RoHS Recast 2011/65/EU June 8, 2011.

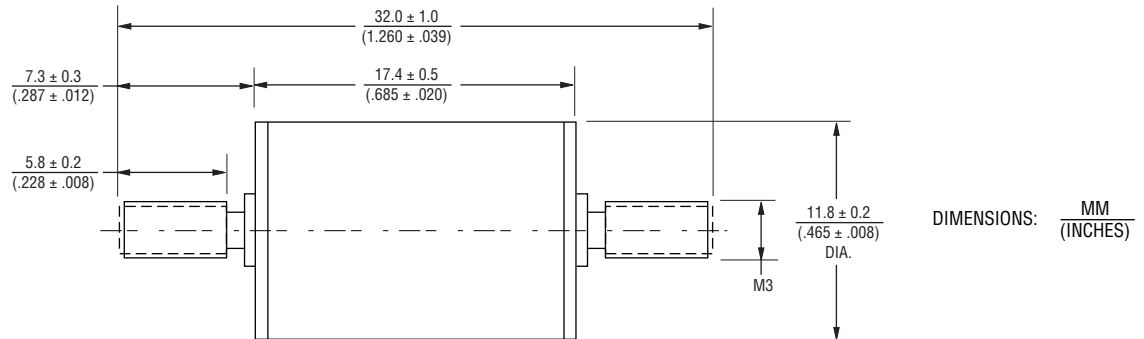
Specifications are subject to change without notice.

The device characteristics and parameters in this data sheet can and do vary in different applications and actual device performance may vary over time. Users should verify actual device performance in their specific applications.

2097 Series High-Voltage 2-Electrode Gas Discharge Tube

BOURNS®

Product Dimensions



Packaging Specifications

Model 2097 ships standard bulk, 35 pcs. per tray; 3 trays per box (105 units).

How to Order

2097 - xxx - D LF

Model Number Designator _____

Voltage (Divided by 10) _____

- 100 = 1000 V
- 120 = 1200 V
- 140 = 1400 V
- 160 = 1600 V
- 200 = 2000 V
- 220 = 2200 V

Contact Terminals _____

- D = M3

RoHS Compliance _____

- LF = RoHS Compliant Product

REV. E 08/15

Specifications are subject to change without notice.
 The device characteristics and parameters in this data sheet can and do vary in different applications and actual device performance may vary over time.
 Users should verify actual device performance in their specific applications.