



**Data Sheet**

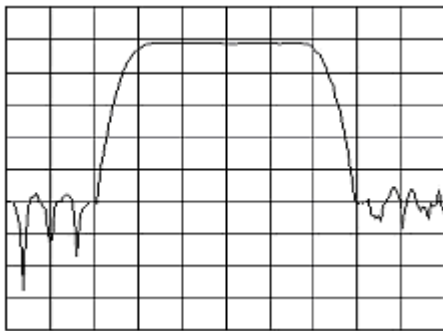
telephone  
949 252 0522  
BACK

Product Category: IF SAW Filter

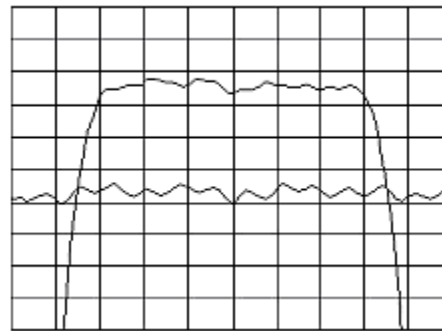
Part Number: 820-IF140.0M-A      Package: 20.2 x 12.6 Thru Hole      Application: Base Station & Repeater      Last Modified: May 30 2003

TYPE :  
140.0 MHz Bandpass Filter  
4.1 MHz Bandwidth

PART NUMBER :  
**820-IF140.0M-A**



Horizontal : 1.0 MHz/Div  
Vertical : 10 dB/Div



Horizontal : 0.6 MHz/Div  
Vertical : 1 dB/Div  
Vertical : 100 ns/Div

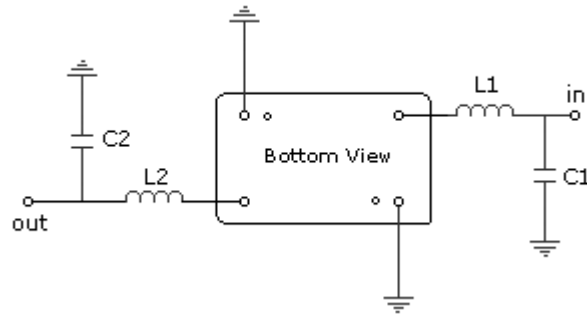
**OPERATING CONDITIONS / ELECTRICAL CHARACTERISTICS**

PARAMETERS	Minimum	Typical	Maximum	Units
Center Frequency	139.94	140.0	140.06	MHz
Insertion Loss	-	23.1	25.0	dB
1dB Bandwidth	3.8	3.93	-	MHz
3dB Bandwidth	4.1	4.24	-	MHz
40dB Bandwidth	-	5.7	5.9	MHz
Passband Ripple	-	0.5	0.7	dB
Group Delay Variation	-	60	100	nsec
Absolute Delay	-	1.62	-	µsec
Ultimate Rejection	50	55	-	dB
Substrate Material	-	Quartz	-	-
Ambient Temperature	-	25	-	°C
Phase Linearity	-	2.7	5.0	degc

\* Custom SAW IF Filters available. Contact Oscilent for assistance.

**PACKAGE OUTLINE (mm)**

**TEST FIXTURE**



L1 = 100nH      C1 = 43pF  
 L2 = 90nH      C2 = 56pF  
 Source/Load Impedance = 50 ohms

**Oscilent Corporation** - CALL **949.252.0522**

17962 Sky Park Circle, Building D, Irvine, CA 92614, USA  
 Fax: 949.252.0599, E-Mail: Sales@Oscilent.com

**Part No.:** 820-IF140.0M-A