

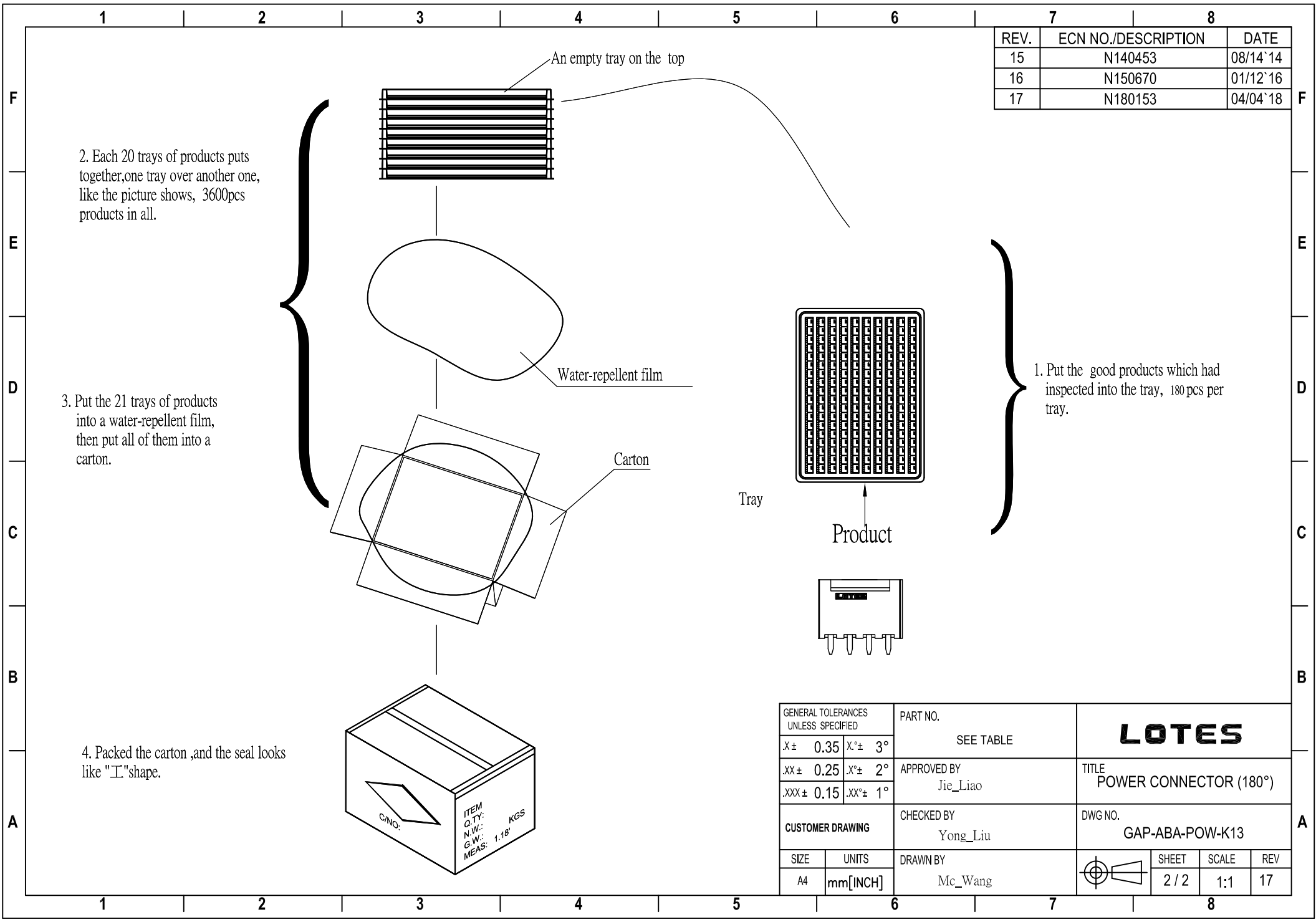
REV.	ECN NO./DESCRIPTION	DATE
15	N140453	08/14'14
16	N150670	01/12'16
17	N180153	04/04'18

7.PRODUCT NUMBER NOTE:
 A B A-P O W-X X X-X X X X
 TYPE SERIAL NUMBER
 K:RoHS COMPLIANT
 P:HF COMPLIANT
 PRODUCT SERIAL NUMBER
 PRODUCT TYPE
 FINISHED PRODUCT
 WIRE TYPE
 CONNECTOR

- NOTES:
 1.MATERIAL:
 1.1:HOUSING: SEE TABLE/COLOR:SEE TABLE
 1.2:CONTACT:BRASS C2680
 2.PLATING SPECIFICATION:
 2.1: 50u"MIN NICKEL UNDER PLATING
 100u"MIN MATTE TIN PLATING OVER ALL
 2.2: 50u"MIN NICKEL UNDER PLATING
 1~3u" GOLD PLATING OVER ALL
 2.3: 50u"MIN NICKEL UNDER PLATED
 15u" GOLD PLATING ON CONTACT AREA
 100u"MIN MATTE TIN PLATING ON SOLDEAR AREA
 3.ELECTRICAL CHARACTERISTICS
 3.1:CONTACT CURRENT RATING: SEE SPEC
 3.2:CONTACT RESISTANCE:20mΩMAX
 3.3:DIELECTRIC WITHSTANDING VOLTAGE:500VAC
 3.4:INSULATION RESISTANCE:1000MΩMIN
 3.5:TEMPERATURE RATING:-40°c+105°c
 4.MECHANICAL CHARACTERISTICS
 4.1:TERMINAL RETENTION FORCE :1.0kgf/pin MIN
 4.2:MATING FORCE:0.7kgf(MAX)/pin.
 4.3:UNMATING FORCE:0.2kgf(MIN)/pin.
 5.WAVE SOLDERING:
 5.1:THE CONNECTOR SHALL BE MOUNTED ON THE PCB ,THE TEMPERATURE OF THE SOLDER SHALL BE 260±5°c AND IMMERSION DURATION :3~5 SECONDS.
 6.RoHS OR HF COMPLIANT: SEE TABLE

24	51.6	55.6	46.20
22	47.4	51.4	42.00
20	43.2	47.2	37.80
18	39.0	43.0	33.60
16	34.8	38.8	29.40
14	30.6	34.6	25.20
12	26.4	30.4	21.00
10	22.2	26.2	16.80
8	18.0	22.0	12.60
6	13.8	17.8	8.40
4	9.6	13.6	4.20
CIRCUIT SIZE	DIM: A	DIM: B	DIM: C

GENERAL TOLERANCES UNLESS SPECIFIED		PART NO.	LOTES		
X± 0.35	X°± 3°	SEE TABLE			
.XX± 0.25	.X°± 2°	APPROVED BY Jie_Liao	TITLE POWER CONNECTOR (180°)		
.XXX± 0.15	.XX°± 1°	CHECKED BY Yong_Liu			
CUSTOMER DRAWING		DRAWN BY Mc_Wang	DWG NO. GAP-ABA-POW-K13		
SIZE	UNITS	DRAWN BY Mc_Wang	SHEET 1/2	SCALE 1:1	REV 17
A4	mm[INCH]				



REV.	ECN NO./DESCRIPTION	DATE
15	N140453	08/14'14
16	N150670	01/12'16
17	N180153	04/04'18

2. Each 20 trays of products puts together, one tray over another one, like the picture shows, 3600pcs products in all.

3. Put the 21 trays of products into a water-repellent film, then put all of them into a carton.

4. Packed the carton, and the seal looks like "E" shape.

1. Put the good products which had inspected into the tray, 180 pcs per tray.

GENERAL TOLERANCES UNLESS SPECIFIED		PART NO.	LOTES			
X± 0.35	X°± 3°	SEE TABLE				
.XX± 0.25	.X°± 2°	APPROVED BY Jie_Liao	TITLE POWER CONNECTOR (180°)			
.XXX± 0.15	.XX°± 1°	CHECKED BY Yong_Liu	DWG NO. GAP-ABA-POW-K13			
CUSTOMER DRAWING		DRAWN BY Mc_Wang		SHEET	SCALE	REV
SIZE A4	UNITS mm[INCH]			2 / 2	1:1	17

	1	2	3	4	5	6	7	8
F								
E								
D								
C								
B								
A								
	1	2	3	4	5	6	7	8

PART NO.	2*N PIN	DIM:D	PLATING	POST OPTION	PEG	MATERIAL HOUSING	COLOR	FLAME CLASS	RoHS OR HF
ABA-POW-005-K36	2*4	12.9	SEE NOTES 2.1	NONE	NONE	PA46	NATURAL	UL94-V0	RoHS