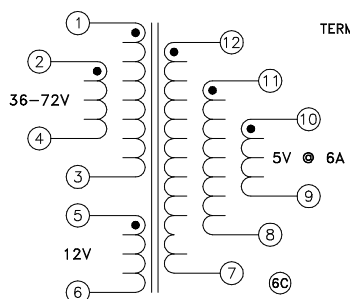
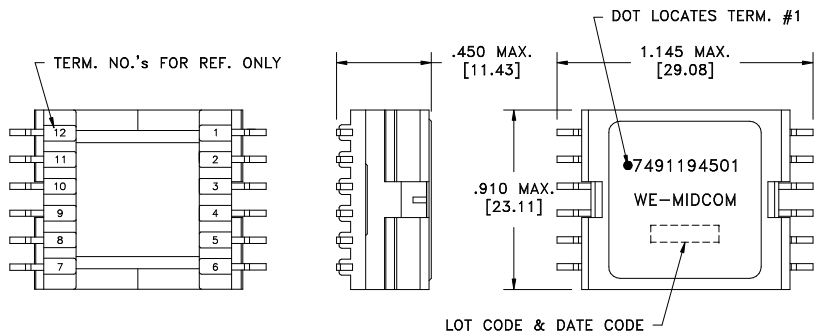


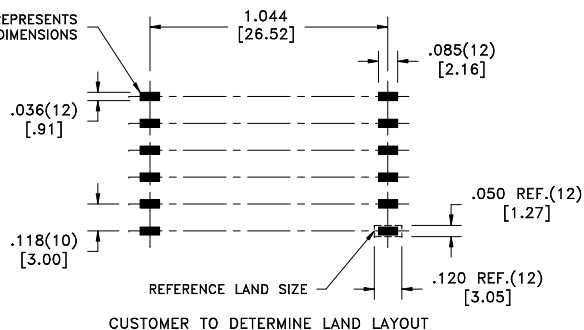
CUSTOMER TERMINAL	RoHS	LEAD(Pb)-FREE
Sn96%, Ag4%	Yes	Yes

more than you expect



Application of the transformer allows for the following groups of terminals to solder bridge:
1&2, 3&4, 10&11, and 8&9.

6D



ELECTRICAL SPECIFICATIONS @ 25°C unless otherwise noted:

PARAMETER	TEST CONDITIONS	VALUE
D.C. RESISTANCE	1-3 tie(1+2, 3+4), @20°C	0.084 ohms ±20%
D.C. RESISTANCE	7-12 tie(7+8+9, 10+11+12), @20°C	0.0050 ohms ±20%
6B D.C. RESISTANCE	5-6 @20°C	0.170 ohms ±20%
INDUCTANCE	1-3 250kHz, 700mVAC, Ls	42.0uH ±10%
INDUCTANCE	1-3 tie(1+2, 3+4), 250kHz, 700mVAC, 2.6ADC, Ls	42.0uH ±10%
LEAKAGE INDUCTANCE	1-3 tie(1+2, 3+4, 7+8+9+10+11+12), 250kHz, 100mVAC, Ls	2.0uH max.
DIELECTRIC	1-12 1875VAC, 1 second	1500VAC, 1 minute
TURNS RATIO	(1-3):(12-7)	7:1, ±1%
TURNS RATIO	(1-3):(11-8)	7:1, ±1%
TURNS RATIO	(1-3):(10-9)	7:1, ±1%
TURNS RATIO	(1-3):(5-6)	3.111:1, ±1%
TURNS RATIO	(1-3):(2-4)	1:1, ±1%

GENERAL SPECIFICATIONS:

OPERATING TEMPERATURE RANGE: -40°C to +125°C.

REV.	DATE	Packaging Specifications		Tolerances unless otherwise specified: Angles: ±1° Decimals: ±.005 [.13] Fractions: ±1/64 Footprint: ±.005 [.13]	DRAWING TITLE TRANSFORMER	PART NO. 7491194501
6D	5/11	Method: Tape & Reel				
6C	9/08	PKG-0647		This drawing is dual dimensioned. Dimensions in brackets are in millimeters.	eiSos p/n: 7491194501	SPECIFICATION SHEET 1 OF 1
6B	12/07	www.we-online.com/midcom				
6A	9/07	SEE REVISION SHEET FOR				

