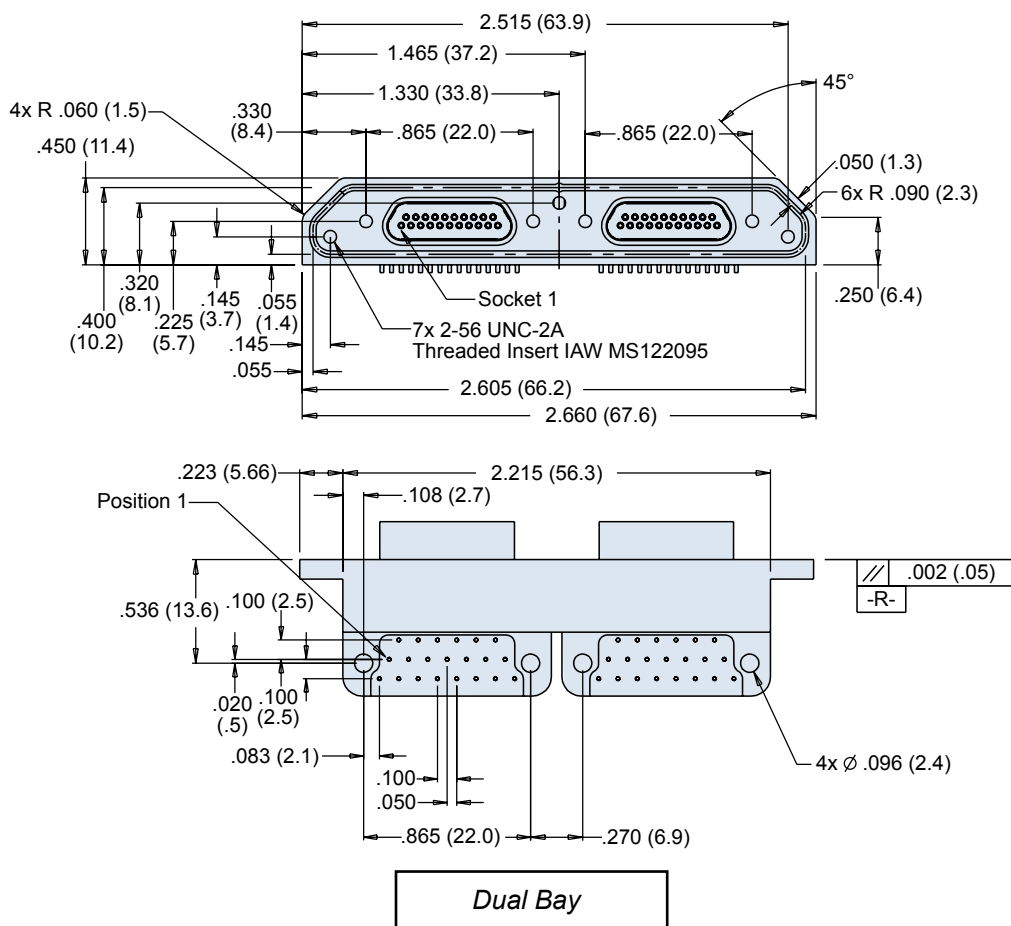


247-045 Dual Bay Micro-D Filter Connector Right Angle (90°) Printed Circuit Board Mount



Please Consult Factory for Additional Insert Arrangements and Other Options to This Custom Connector Design

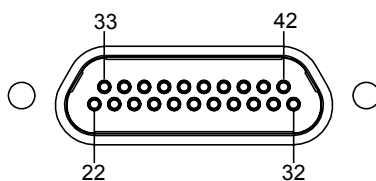
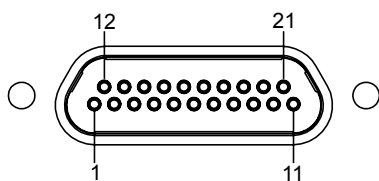
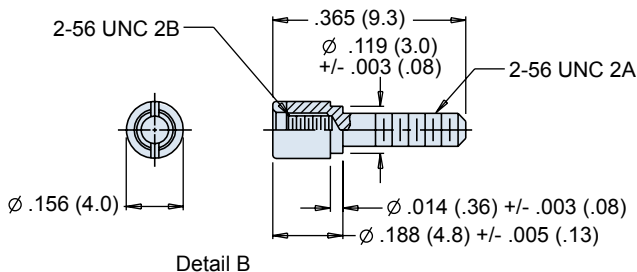
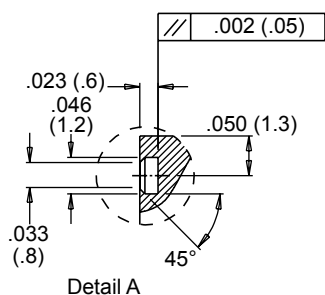
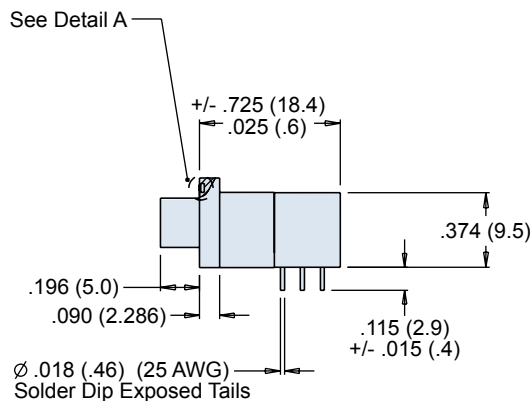
APPLICATION NOTES

- Interpret Drawing IAW ASME-Y-14.5
- Interface Dimensions IAW MIL-DTL-83513/04-C
- Materials and Finishes:
 - Shell - Aluminum Alloy / Tin over Nickel IAW ASTM-B-545
 - Insulators and Potting Trays - Liquid Crystal Polymer
 - Contacts - Copper Alloy / Gold over Nickel
 - Leads - 25 AWG Copper / Gold Plated
 - Interfacial Seals - Fluorosilicone
 - Hardware - Stainless Steel / Passivated
 - Potting - HYSOL EE4215, or 2850FT
- Electrical Parameters:
 - Capacitance - Pins 9, 24, 27, 29, 34, 37 and 39 are internally grounded to shell.
 - All remaining pins are to be 16-22.5 nF
- Insulation Resistance - 5000 MegOhms min. at 100 VDC
- Dielectric Withstand Voltage - 200 VDC
- Insertion Loss -
 - 10 dB @ 10 MHz
 - 25 dB @ 100 MHz
 - 40 dB @ 1 GHz
 - 50 dB @ 10 GHz
- Each assembly to be shipped with 4 rear panel mount jackposts for mounting to a .020 thick panel. (See Detail B)
- Part supplied with EMI Spring installed.
- Metric Dimensions (mm) are indicated in parentheses.

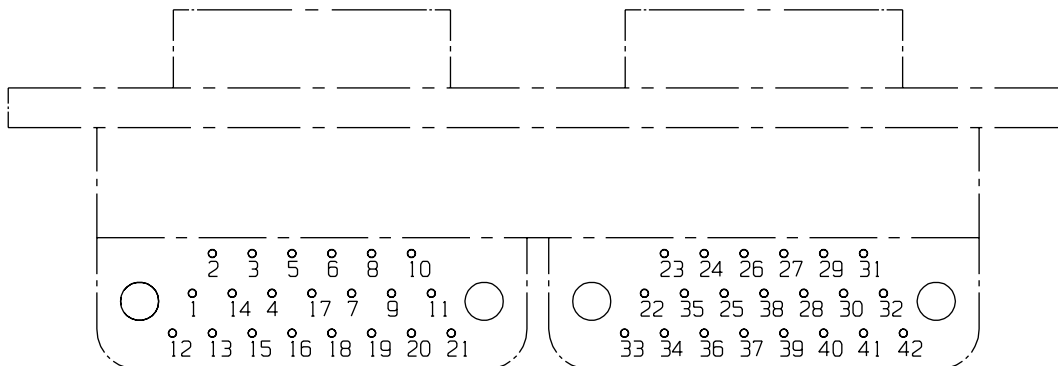
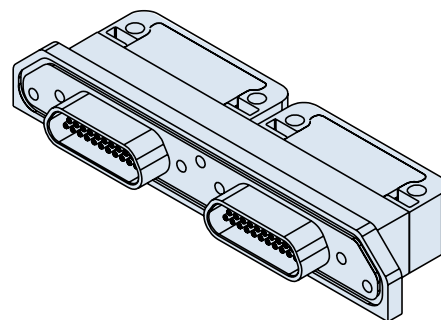
247-045
Dual Bay Micro-D Filter Connector
Right Angle (90°) Printed Circuit Board Mount



Special
Connectors



Mating Face Contact Identification



Termination Contact Identification

