

## 1A Low-Dropout Linear Regulator

### Features

- Available in 1.8V, 2.5V, 3.3V, 5.0V Versions
- Space Saving SOT-89, TO-220, TO-252 and SOT-223 Package
- Internal Short Circuit Current Limiting
- Internal Over Temperature Protection
- Output Current in Excess of 1A

### Applications

- Post Regulation for Switching DC/DC Converter
- High Efficiency Linear Regulator
- Battery Charger
- Battery Powered Instrumentation
- Motherboard

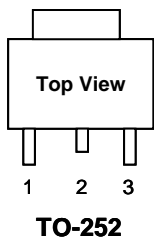
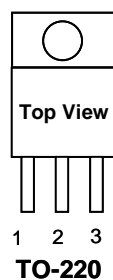
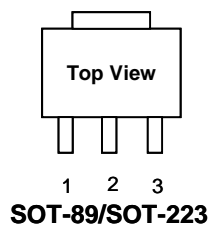
### General Description

The G9117-XX is a low dropout linear regulator with a dropout of 1.2V at 800mA of load current and 1.3V at 1A of load current. It is available in fixed voltage : 1.8V, 2.5V, 3.3V and 5.0V versions.

The G9117-XX provides over temperature and over current protection circuits to prevent it from being damaged by abnormal operating conditions.

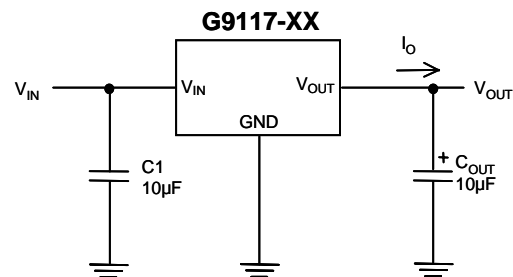
The G9117-XX is available in SOT-89, TO-220, TO-252, and SOT-223 packages. A minimum of 10 $\mu$ F tantalum electrolytic capacitor is required at the output to improve the transient response and stability.

### Package Type



### Typical Application

[Note 4]: Type of C<sub>OUT</sub>

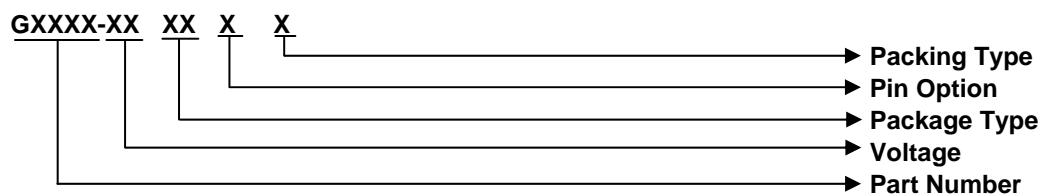


## Ordering Information

ORDER NUMBER	MARKING	TEMP. RANGE	PACKAGE (Pb free/Green)	PIN OPTION		
				1	2	3
G9117-18T23U	917AA	-40°C~85°C	SOT-89	GND	V <sub>OUT</sub>	V <sub>IN</sub>
G9117-25T23U	917BA	-40°C~85°C	SOT-89	GND	V <sub>OUT</sub>	V <sub>IN</sub>
G9117-33T23U	917CA	-40°C~85°C	SOT-89	GND	V <sub>OUT</sub>	V <sub>IN</sub>
G9117-50T23U	917DA	-40°C~85°C	SOT-89	GND	V <sub>OUT</sub>	V <sub>IN</sub>
G9117-18T33T	9117-18	-40°C~85°C	TO-220	GND	V <sub>OUT</sub>	V <sub>IN</sub>
G9117-25T33T	9117-25	-40°C~85°C	TO-220	GND	V <sub>OUT</sub>	V <sub>IN</sub>
G9117-33T33T	9117-33	-40°C~85°C	TO-220	GND	V <sub>OUT</sub>	V <sub>IN</sub>
G9117-50T33T	9117-50	-40°C~85°C	TO-220	GND	V <sub>OUT</sub>	V <sub>IN</sub>
G9117-18T43U	9117-18	-40°C~85°C	TO-252	GND	V <sub>OUT</sub>	V <sub>IN</sub>
G9117-25T43U	9117-25	-40°C~85°C	TO-252	GND	V <sub>OUT</sub>	V <sub>IN</sub>
G9117-33T43U	9117-33	-40°C~85°C	TO-252	GND	V <sub>OUT</sub>	V <sub>IN</sub>
G9117-50T43U	9117-50	-40°C~85°C	TO-252	GND	V <sub>OUT</sub>	V <sub>IN</sub>
G9117-18T43D	9117-18	-40°C~85°C	TO-252	GND	V <sub>OUT</sub>	V <sub>IN</sub>
G9117-25T43D	9117-25	-40°C~85°C	TO-252	GND	V <sub>OUT</sub>	V <sub>IN</sub>
G9117-33T43D	9117-33	-40°C~85°C	TO-252	GND	V <sub>OUT</sub>	V <sub>IN</sub>
G9117-50T43D	9117-50	-40°C~85°C	TO-252	GND	V <sub>OUT</sub>	V <sub>IN</sub>
G9117-18T63U	9117-18	-40°C~85°C	SOT-223	GND	V <sub>OUT</sub>	V <sub>IN</sub>
G9117-25T63U	9117-25	-40°C~85°C	SOT-223	GND	V <sub>OUT</sub>	V <sub>IN</sub>
G9117-33T63U	9117-33	-40°C~85°C	SOT-223	GND	V <sub>OUT</sub>	V <sub>IN</sub>
G9117-50T63U	9117-50	-40°C~85°C	SOT-223	GND	V <sub>OUT</sub>	V <sub>IN</sub>

\* For other package types and pin options, please contact us at sales@gmt.com.tw

## Order Number Identification



### PACKAGE TYPE

T2: SOT-89  
 T3: TO-220  
 T4: TO-252  
 T6: SOT-223

### PIN OPTION

1      2      3  
 3: GND      V<sub>OUT</sub>      V<sub>IN</sub>

### PACKING

U & D : Tape & Reel  
 T : Tube