

ZONE	REV	SCR NUMBER	DESCRIPTION	BY	DATE	APPROVED
ALL	A	DCOY-ABRK3N.VER01	NEW RELEASE	HCL-SD	05/10/2016	D.COVEY

9 4 0 - 6 X 0 B - X X X

XCede PLUS BACKPLANE MODULE MALE STANDARD LOAD

6 PAIR

6-POSITION

1.85MM PITCH

PLATING	
LETTER	DESCRIPTION
D	NI SULFAMATE, STANDARD GOLD, LEADFREE
E	NI SULFAMATE, HIGH GOLD, LEADFREE
H	NANO NI, STANDARD GOLD, LEADFREE
J	NANO NI, HIGH GOLD, LEAD-FREE

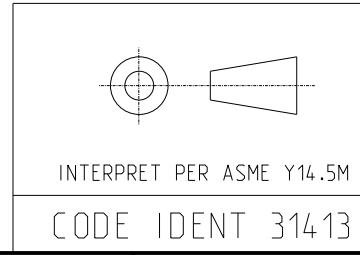
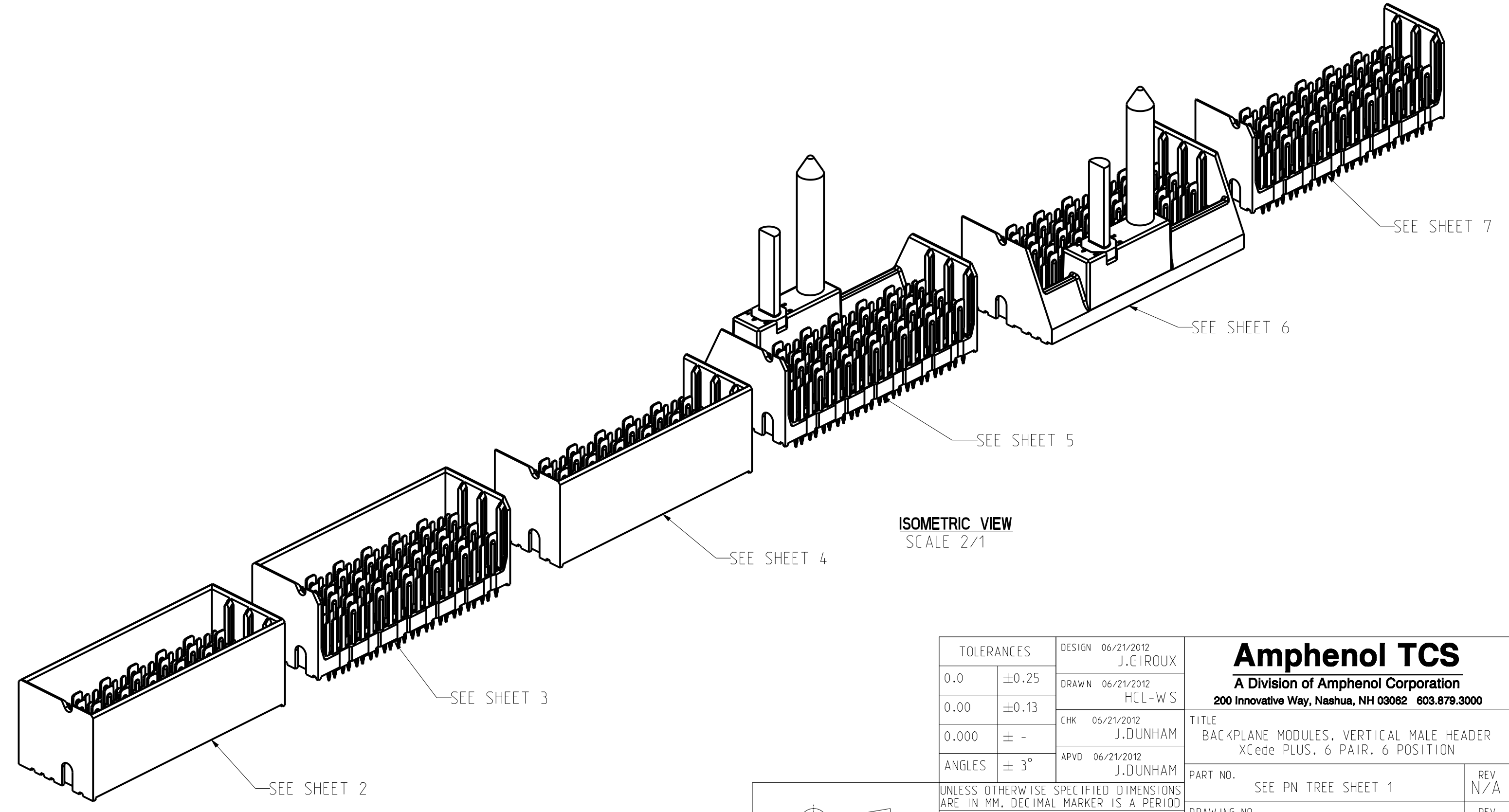
NUMBER	PIN STYLE, HEIGHT
0	GUIDE PIN MACHINED, 31.6mm / NONE
1	WIDE GUIDE MACHINED, 31.6mm

NUMBER	SIGNAL & LG. GROUND WIPE LENGTH, COMPLIANT PIN SIZE
1	2 MM WIPE SIGNAL, 4 MM WIPE LG GND, Ø.0217" DRILL
2	3 MM WIPE SIGNAL, 4 MM WIPE LG GND, Ø.0217" DRILL
3	2 MM WIPE SIGNAL, 4 MM WIPE LG GND, Ø.0177" DRILL
4	3 MM WIPE SIGNAL, 4 MM WIPE LG GND, Ø.0177" DRILL
5	2 MM WIPE SIGNAL, 3 MM WIPE LG GND, Ø.0217" DRILL
7	2 MM WIPE SIGNAL, 3 MM WIPE LG GND, Ø.0177" DRILL

	LETTER									
LEFT POLARIZING GUIDANCE (SEE SHEET 3)	N	J	A	B (NO KEY)	C	D	E	F	G	H
	NO KEY NO GUIDE PIN									
RIGHT POLARIZING GUIDANCE (SEE SHEET 4)	Z	Y	P	Q (NO KEY)	R	S	T	U	V	W
	NO KEY NO GUIDE PIN									
OPEN (SEE SHEET 2)	O (ZERO)									
LEFT WALL (SEE SHEET 5)	L									
RIGHT WALL (SEE SHEET 6)	M									
TWO WALL (SEE SHEET 7)	1									

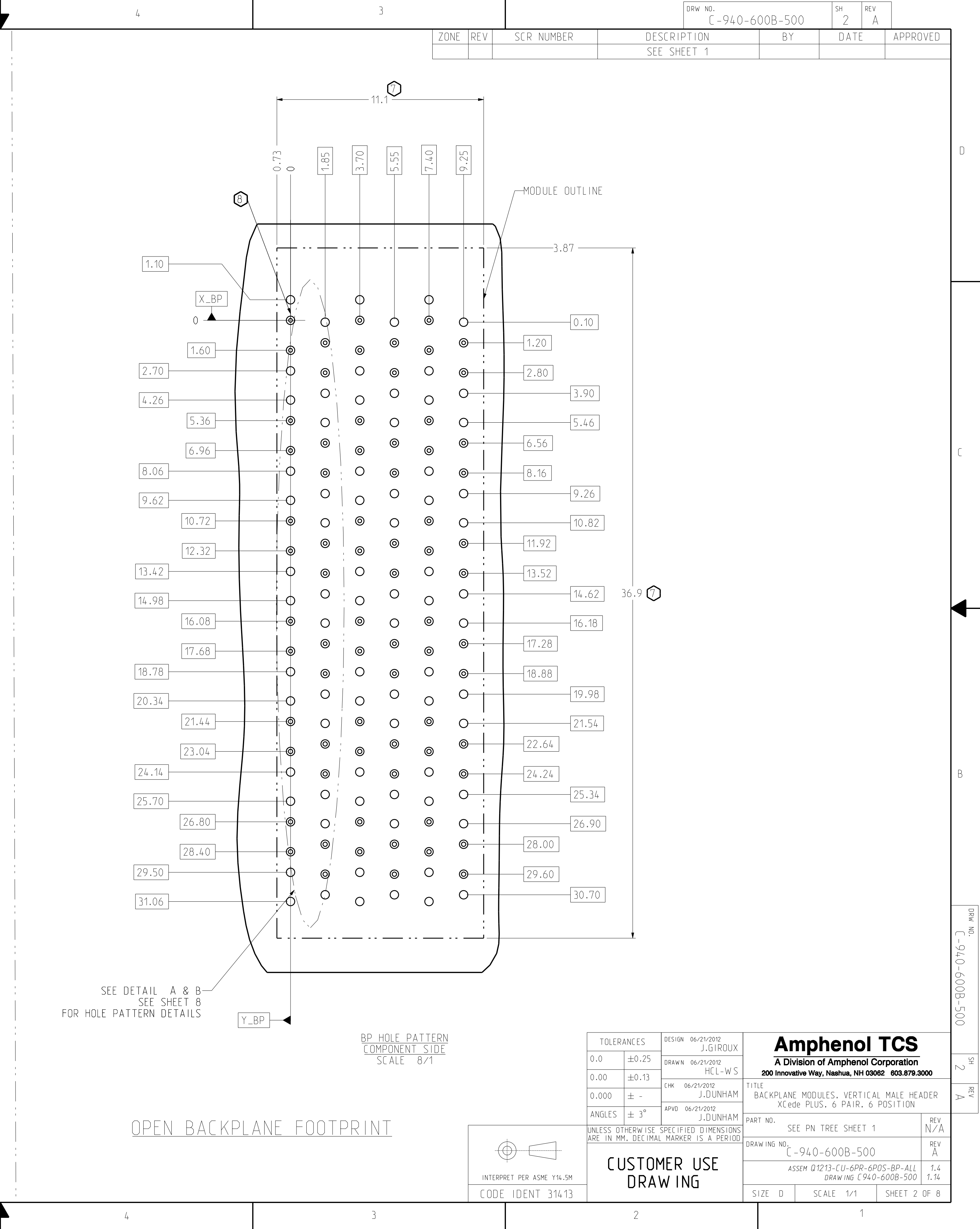
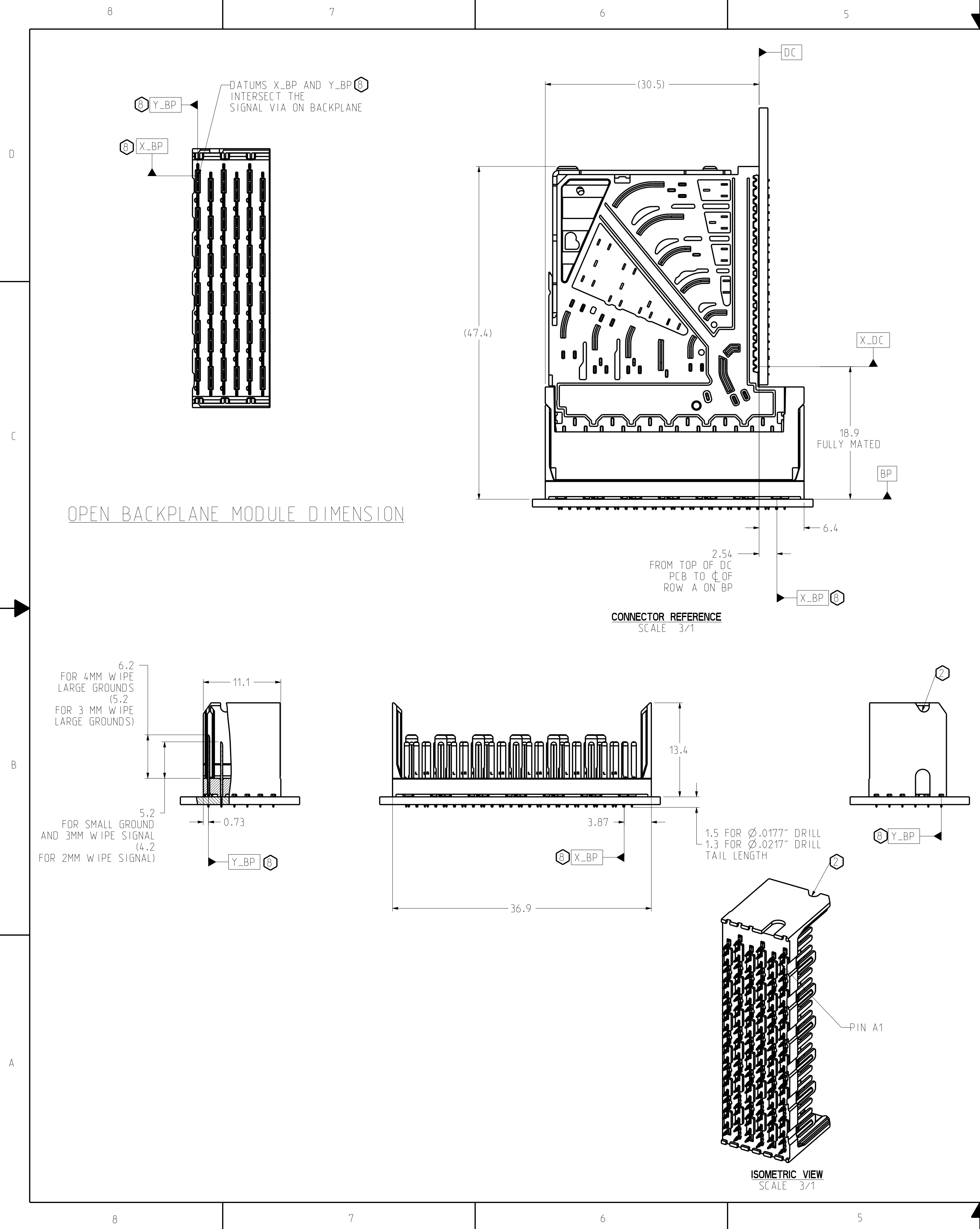
NOTES:

- REFER TO TB-2150 FOR XCede SUPERCEDE PRODUCT SPECIFICATIONS.
- NOTCH DESIGNATES "ROW A" SIDE OF SHROUD. NOTCH FEATURE ON OPPOSITE SIDE FROM PART MARKING.
- SEE TB-2325 FOR PART MARKING REQUIREMENTS.
- PLATING THICKNESS OF SIGNAL CONTACT AND GROUND CONTACT IS DETERMINED BY PLATING CODE. SEE PART NUMBER TREE SHEET 1.
- REPAIR PROCEDURE FOR MODULE. SEE TB-2210.
- SEE TB-2149 FOR ROUTING GUIDELINES & PTH REQ'S.
- SEE DOC C190-1001-000 FOR TOOLING KEEPOUT ZONES.
- BACKPLANE DATUM REFERENCE.
- OPTIONAL HOLE/MOUNTING SCREW LOCATION FOR GROUNDED PIN OR ADDITIONAL GUIDE PIN SUPPORT.
REFER TO TB-2211 FOR PROPER GUIDE PIN SELECTION AND DRAWING C942-4010-000 FOR OPTIONAL HOLE DETAILS.
ONLY APPLIES FOR MACHINED GUIDE PIN APPLICATIONS.
- DIMENSIONS APPLY FOR BOTH COMPLIANT PIN SIZES.



TOLERANCES	DESIGN 06/21/2012 J.GIROUX	Amphenol TCS A Division of Amphenol Corporation 200 Innovative Way, Nashua, NH 03082 603.879.3000
0.0 ±0.25	DRAWN 06/21/2012 HCL-WS	
0.00 ±0.13	CHK 06/21/2012 J.DUNHAM	
0.000 ± -	APVD 06/21/2012 J.DUNHAM	
ANGLES ± 3°	UNLESS OTHERWISE SPECIFIED DIMENSIONS ARE IN MM. DECIMAL MARKER IS A PERIOD.	TITLE BACKPLANE MODULES, VERTICAL MALE HEADER XCede PLUS, 6 PAIR, 6 POSITION PART NO. SEE PN TREE SHEET 1 DRAWING NO. C-940-600B-500 ASSEM 01213-CU-6PR-6POS-BP-ALL DRAWING C940-600B-500
CUSTOMER USE DRAWING		REV N/A REV A 1.4 1.14 SIZE D SCALE 2/1 SHEET 1 OF 8

ZONE	REV	SCR NUMBER	DESCRIPTION	BY	DATE	APPROVED
			SEE SHEET 1			



TOLERANCES		DESIGN	06/21/2012	Amphenol TCS	
0.0	± 0.25	J.GIROUX		A Division of Amphenol Corporation	
0.00	± 0.13	HCL-W.S.		200 Innovative Way, Nashua, NH 03062 603.879.3000	
0.000	$\pm -$	J.DUNHAM		TITLE BACKPLANE MODULES, VERTICAL MALE HEADER XCede PLUS, 6 PAIR, 6 POSITION	
ANGLES	$\pm 3^\circ$	J.DUNHAM		PART NO.	SEE PN TREE SHEET 1
UNLESS OTHERWISE SPECIFIED DIMENSIONS ARE IN MM. DECIMAL MARKER IS A PERIOD				REV	N/A
DRAWING NO.				REV	A
C-940-600B-500				ASSEM 01213-CU-6PR-6POS-BP-ALL	1.4
DRAWING C940-600B-500				SCALE	1/1
SIZE D				SHEET	2 OF 8

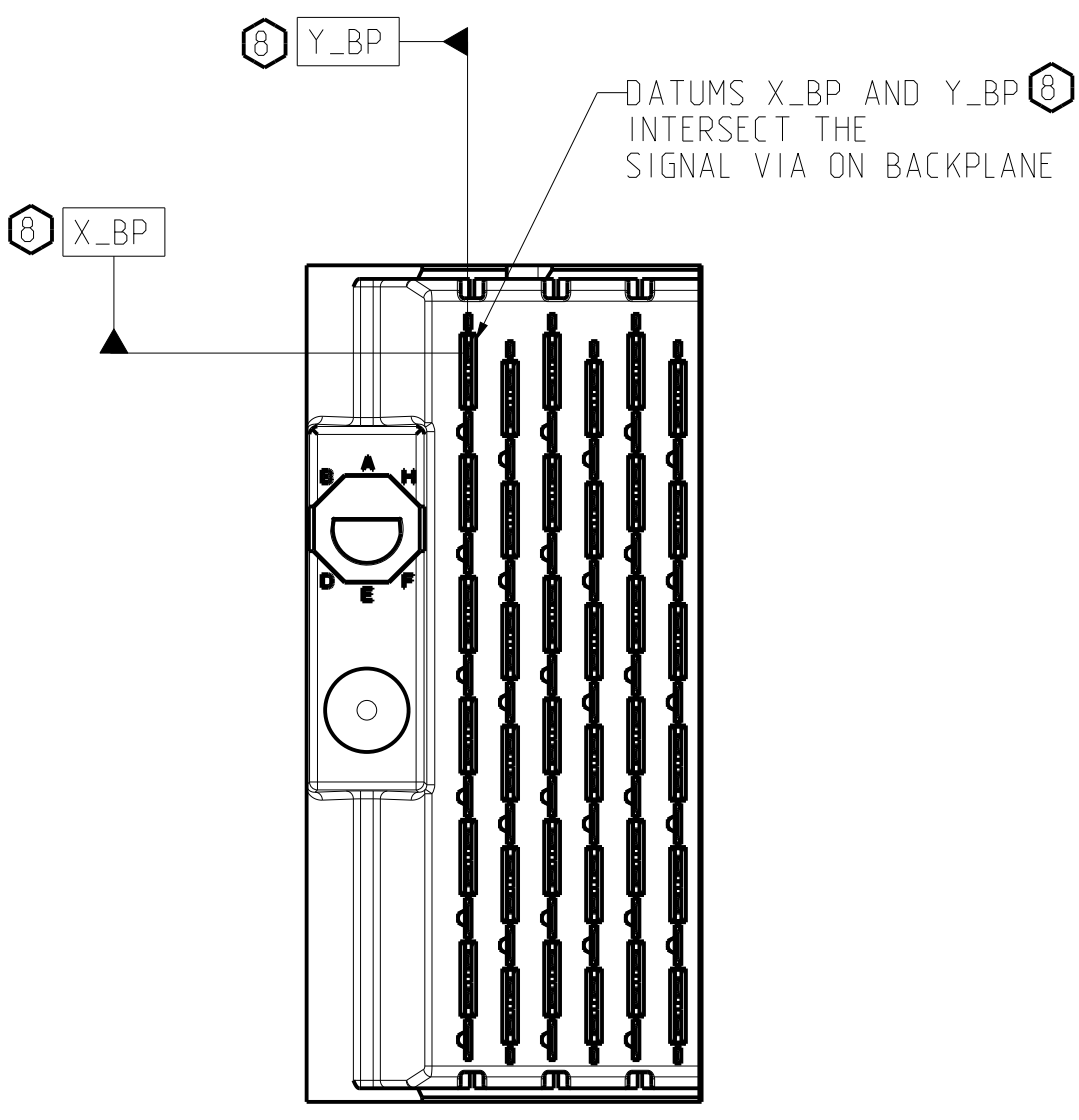
INTERPRET PER ASME Y14.5M
CODE IDENT 31413

CUSTOMER USE
DRAWING

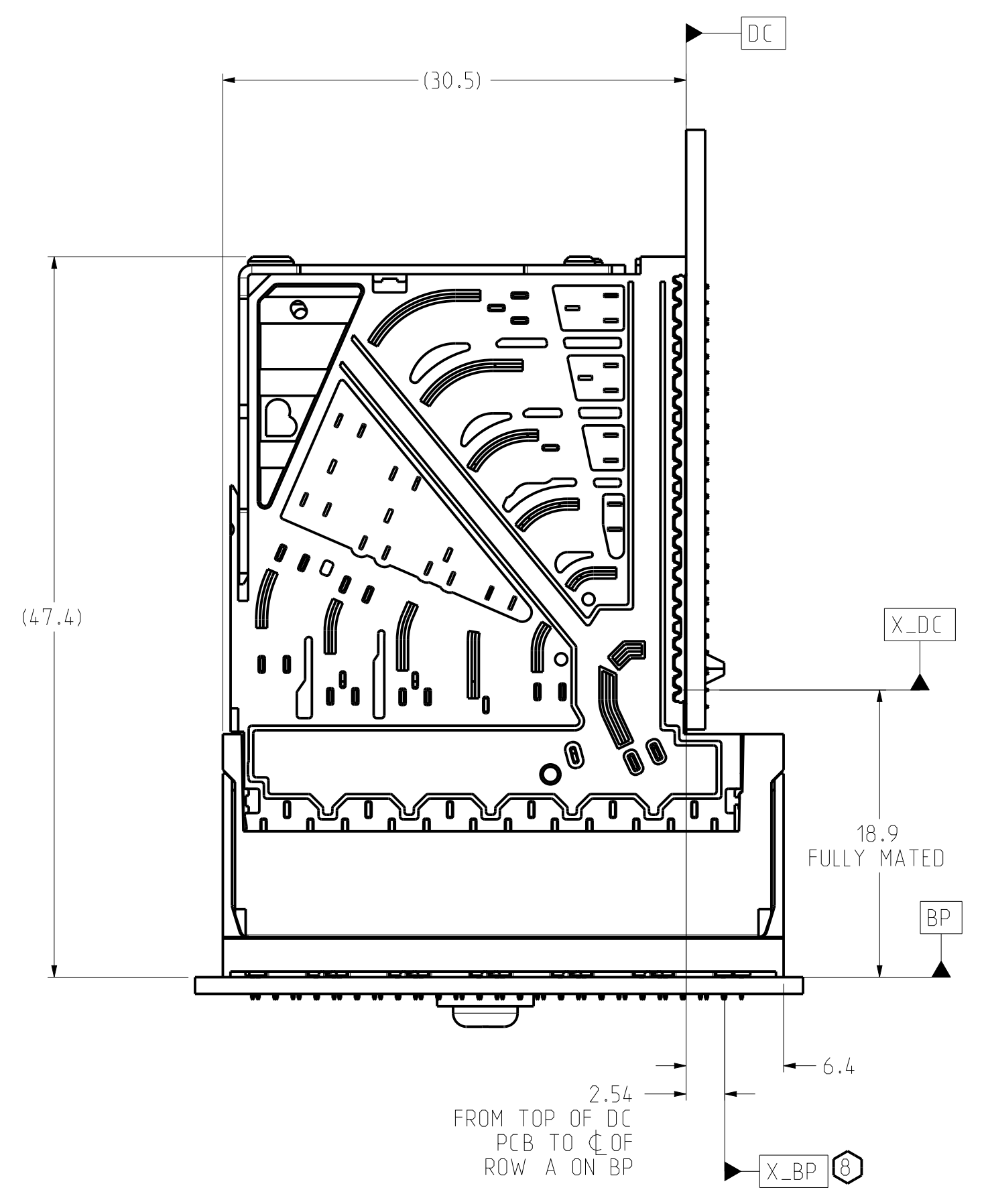
DRW NO. C-940-600B-500

SH 2
REV A

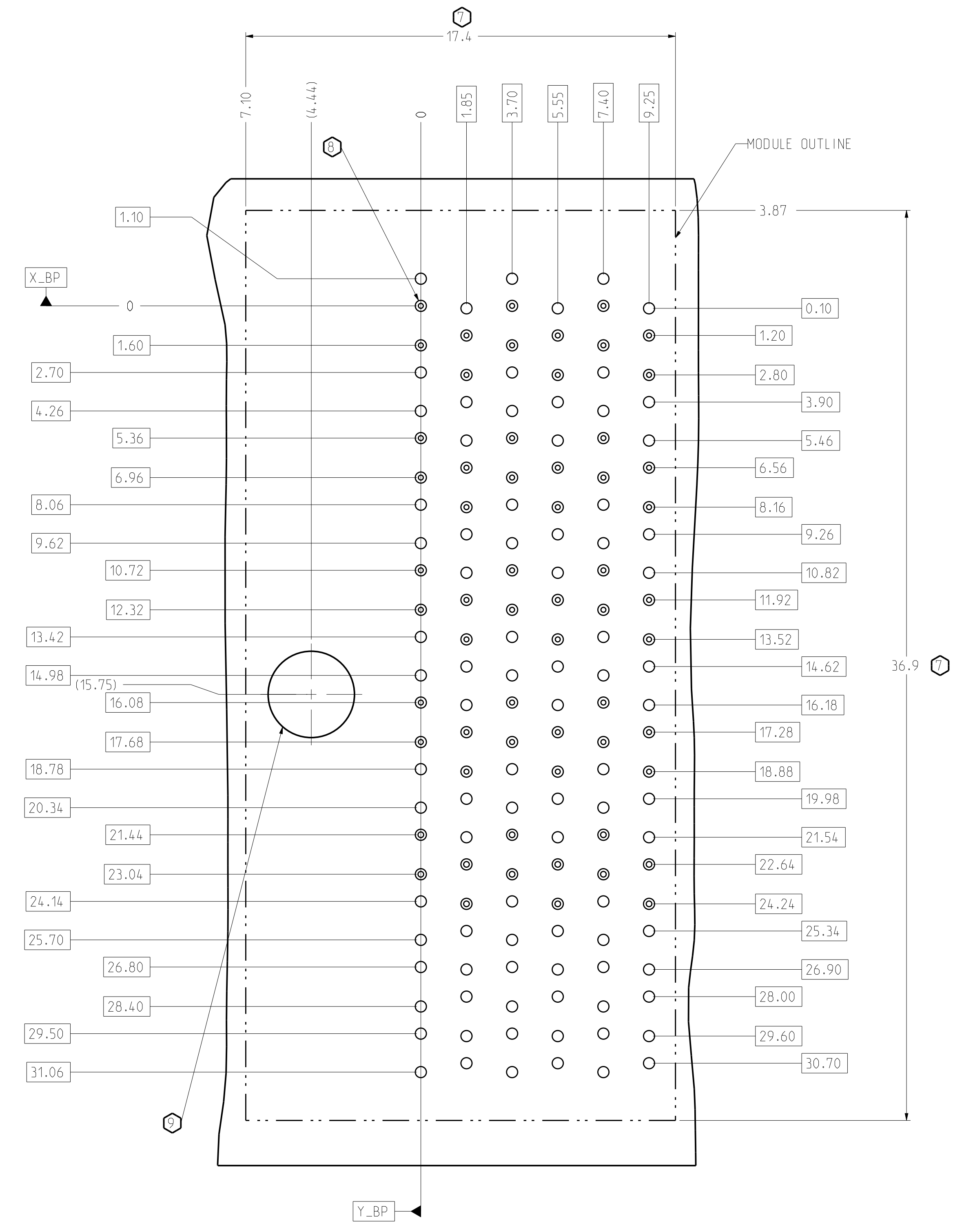
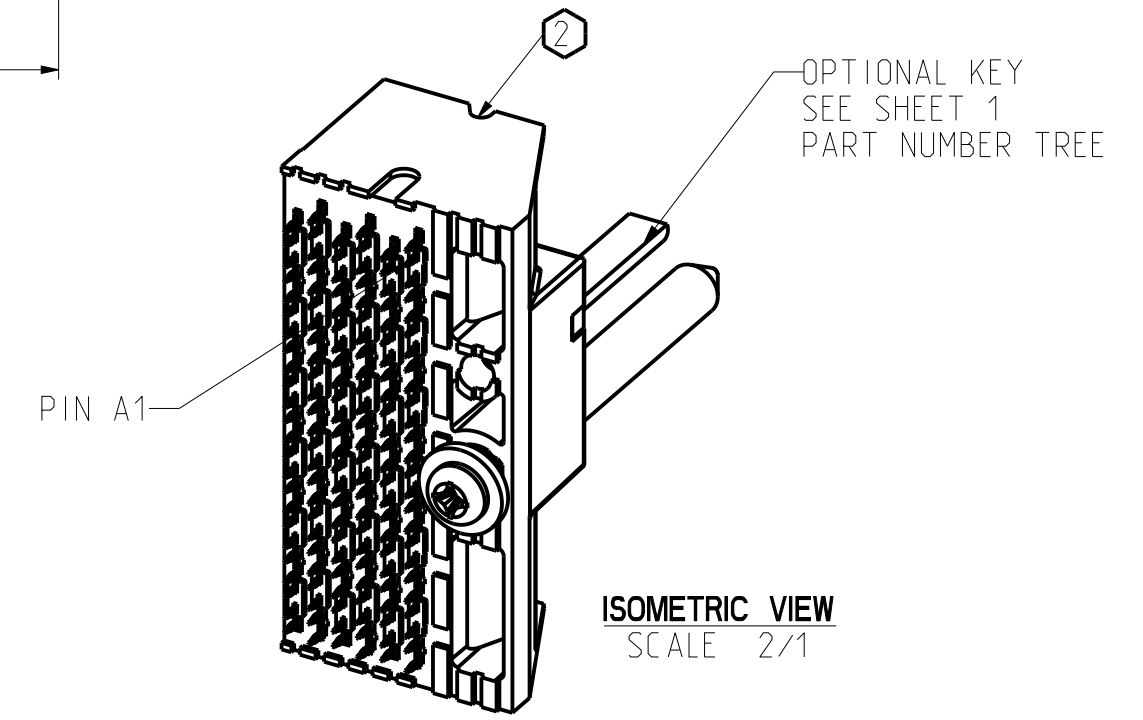
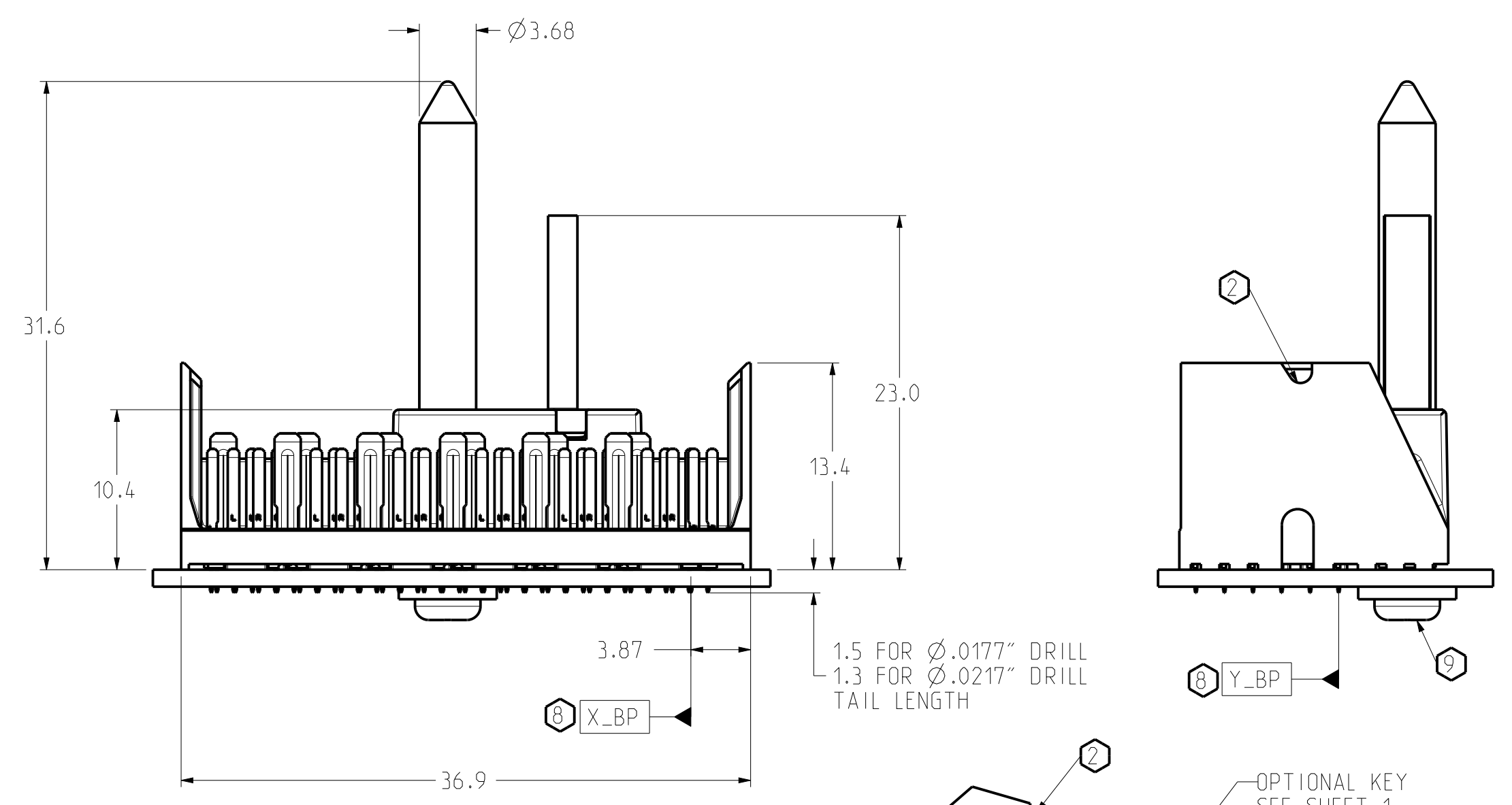
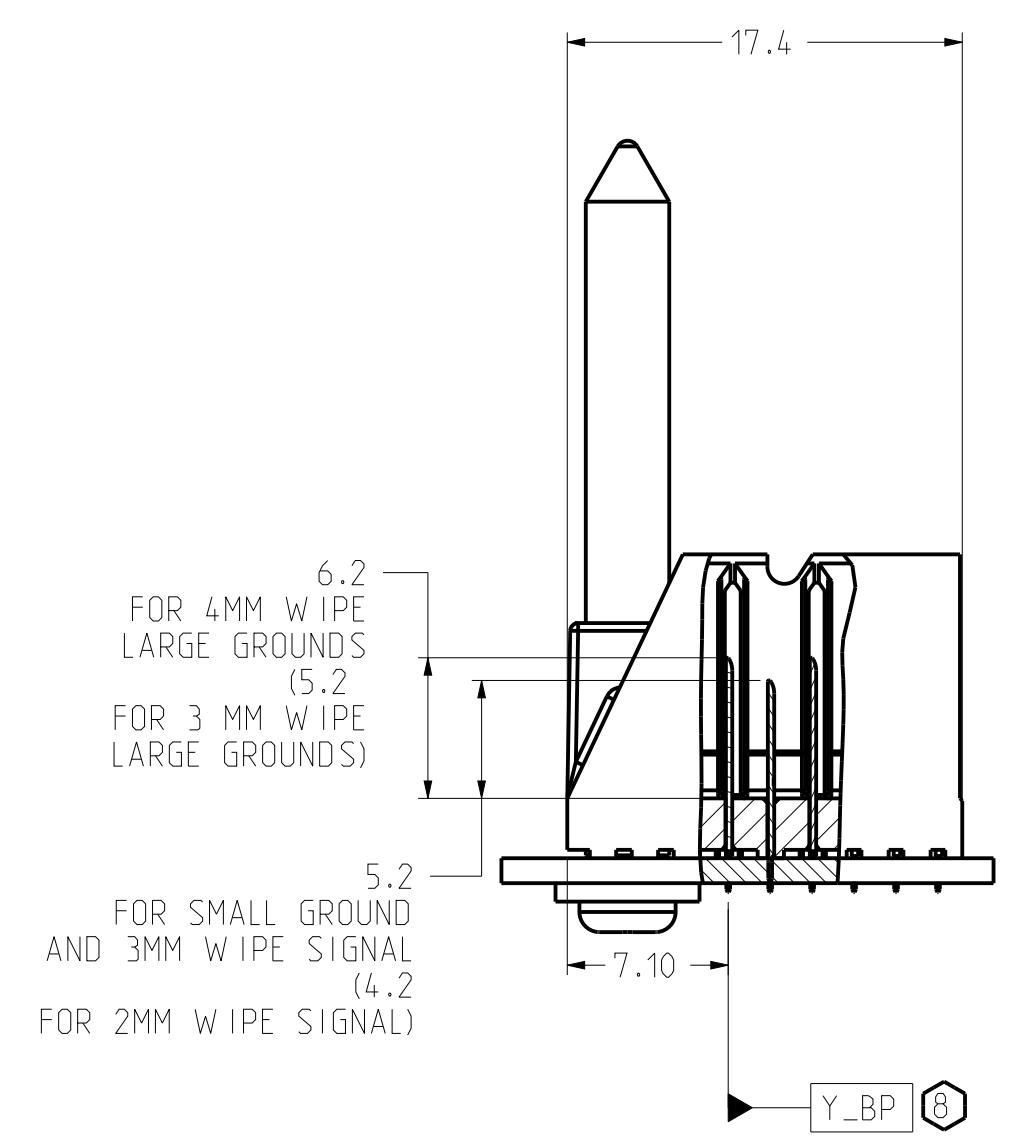
ZONE	REV	SCR NUMBER	DESCRIPTION	BY	DATE	APPROVED
			SEE SHEET 1			



LEFT POLARIZING/GUIDE BACKPLANE MODULE DIMENSION



CONNECTOR REFERENCE SCALE 3/1



LEFT POLARIZING/GUIDE BACKPLANE FOOTPRINT

TOLERANCES	DESIGN	DATE	DESIGNER
0.0	±0.25	06/21/2012	J.GIROUX
0.0	±0.13	06/21/2012	HCL-W-S
0.000	± -	06/21/2012	J.DUNHAM
ANGLES	± 3°	06/21/2012	J.DUNHAM

Amphenol TCS
A Division of Amphenol Corporation
200 Innovative Way, Nashua, NH 03082 803.879.3000

TITLE	PART NO.	REV
BACKPLANE MODULES, VERTICAL MALE HEADER Xcede PLUS, 6 PAIR, 6 POSITION	SEE PN TREE SHEET 1	N/A
ASSEM 01213-CU-6PR-6POS-BP-ALL	C-940-600B-500	1.4
DRAWING C940-600B-500		1.14

INTERPRET PER ASME Y14.5M
CODE IDENT 31413

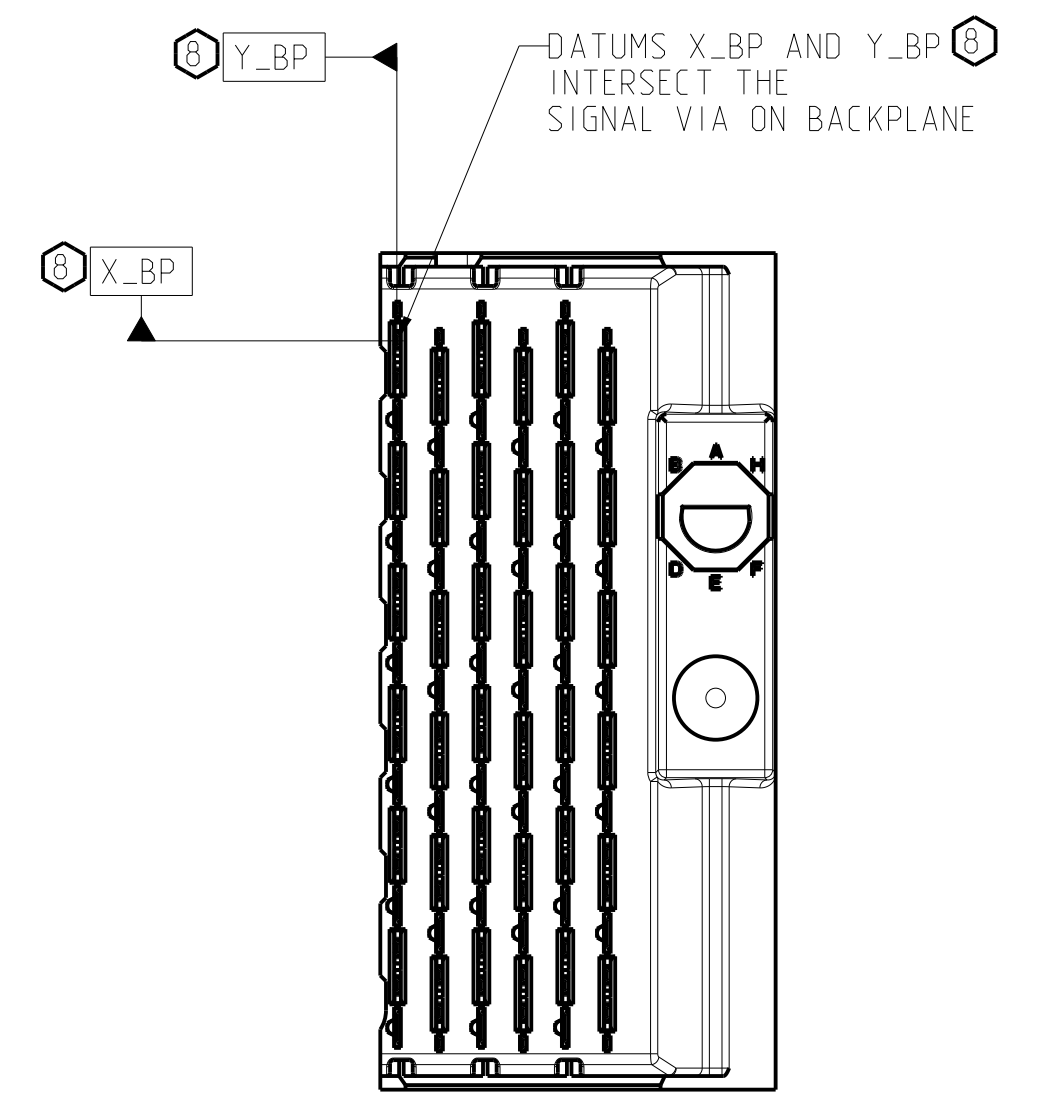
CUSTOMER USE DRAWING

SIZE	SCALE	SHEET
D	1/1	3 OF 8

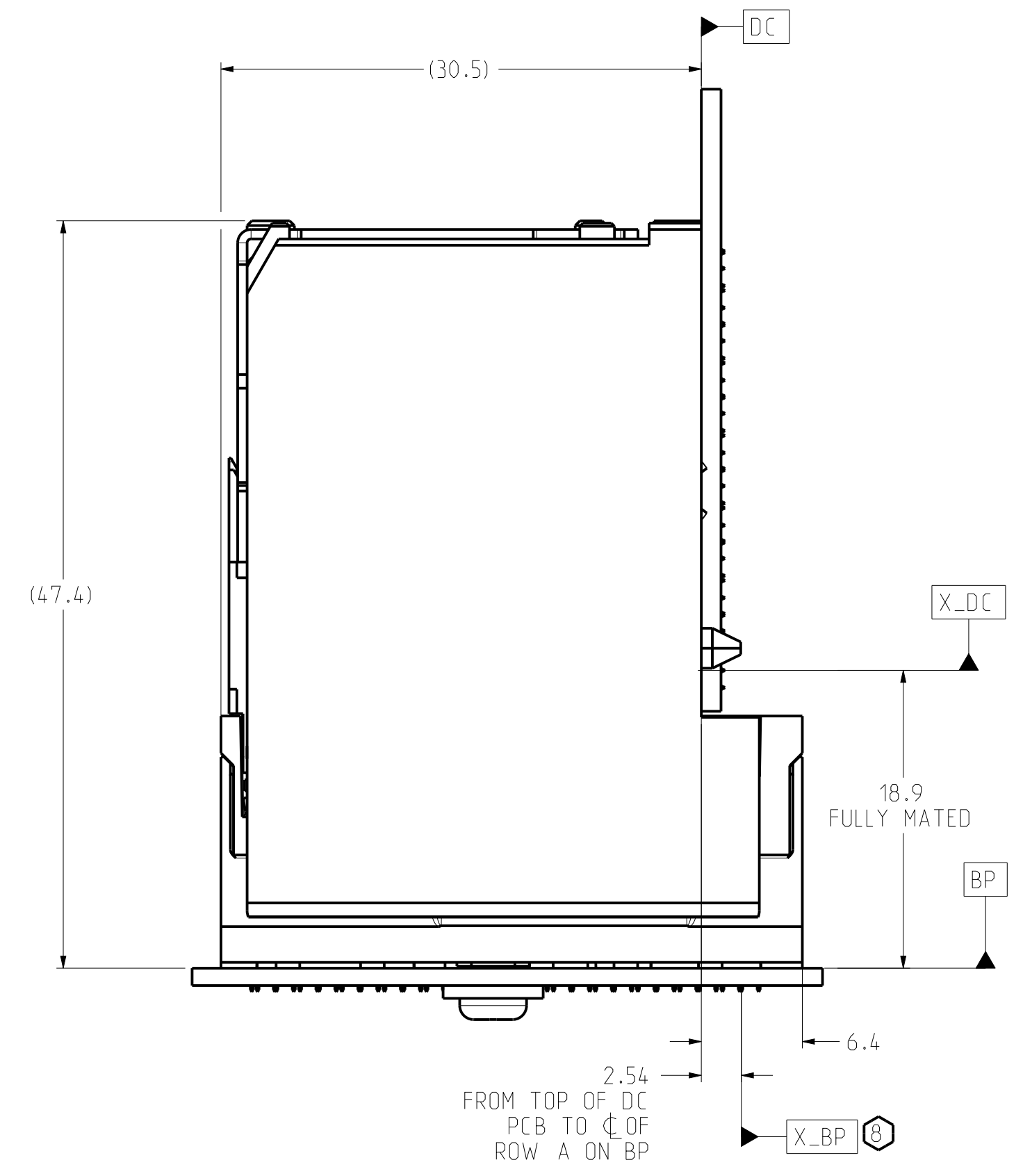
C-940-600B-500

SH 3 REV A

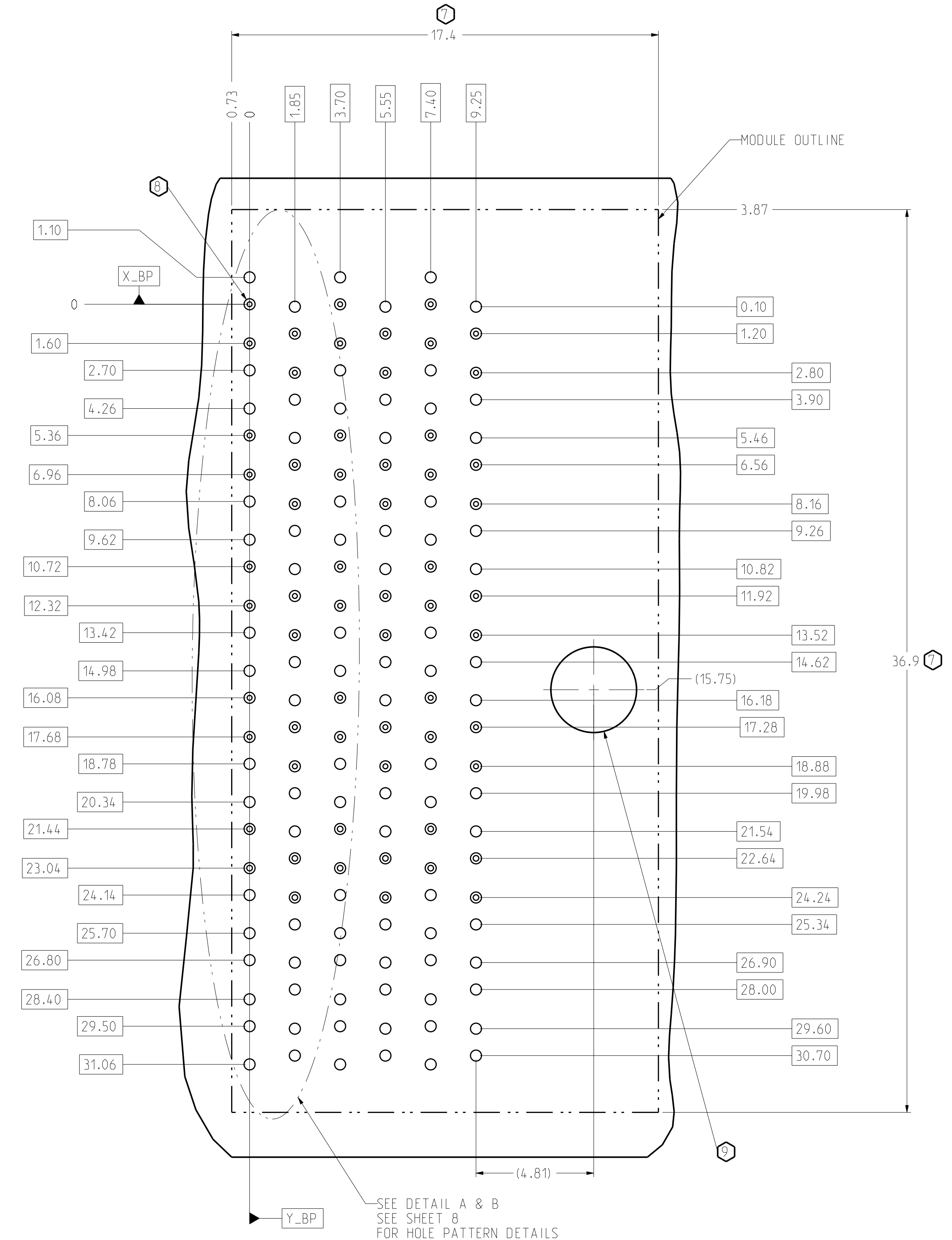
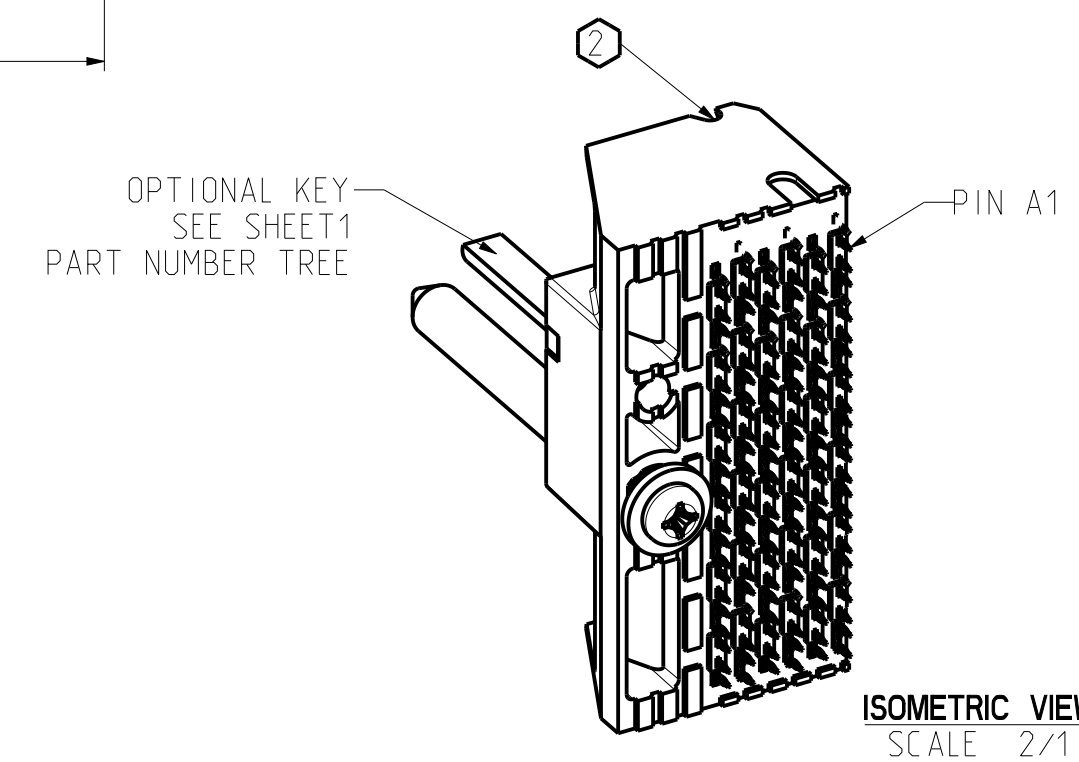
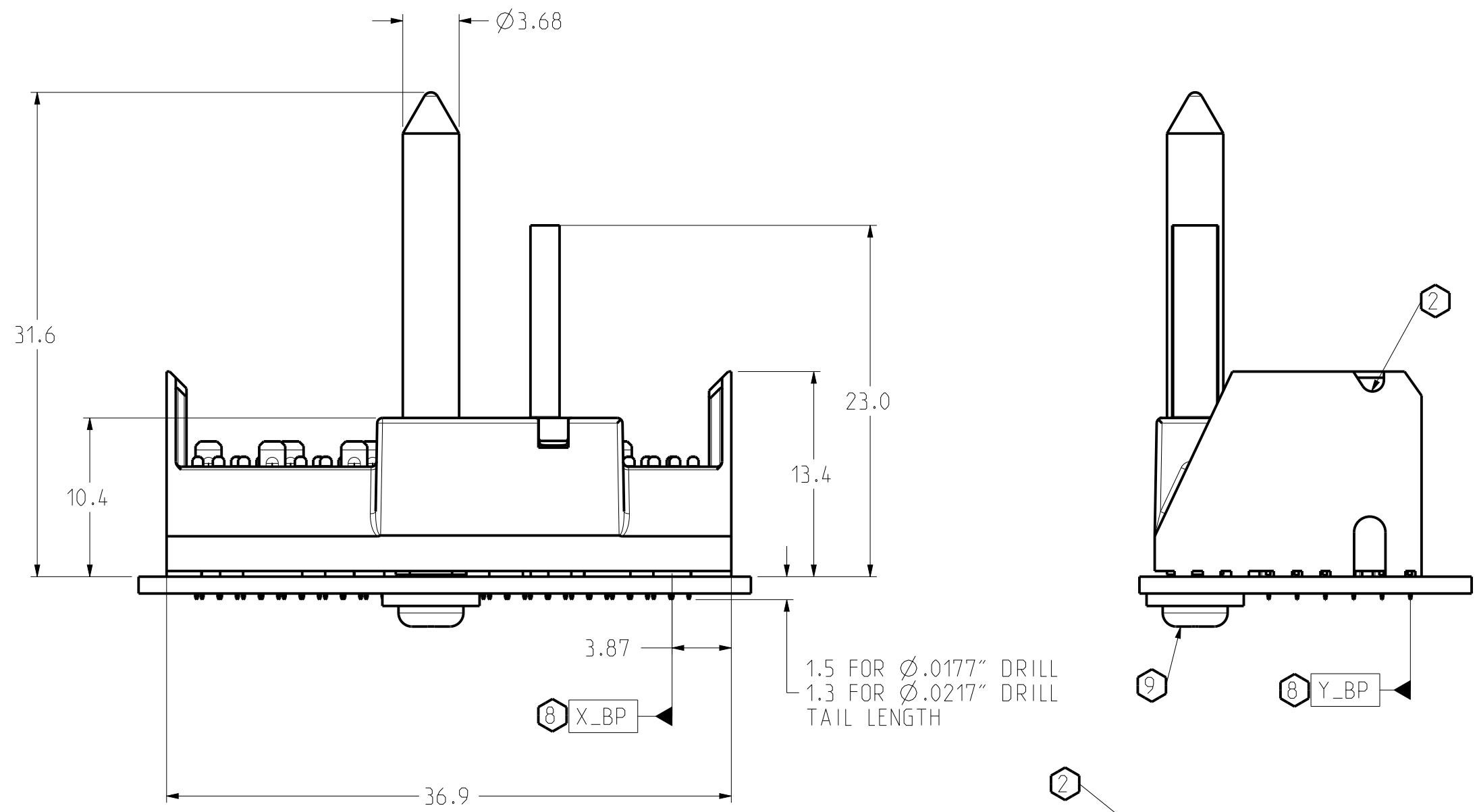
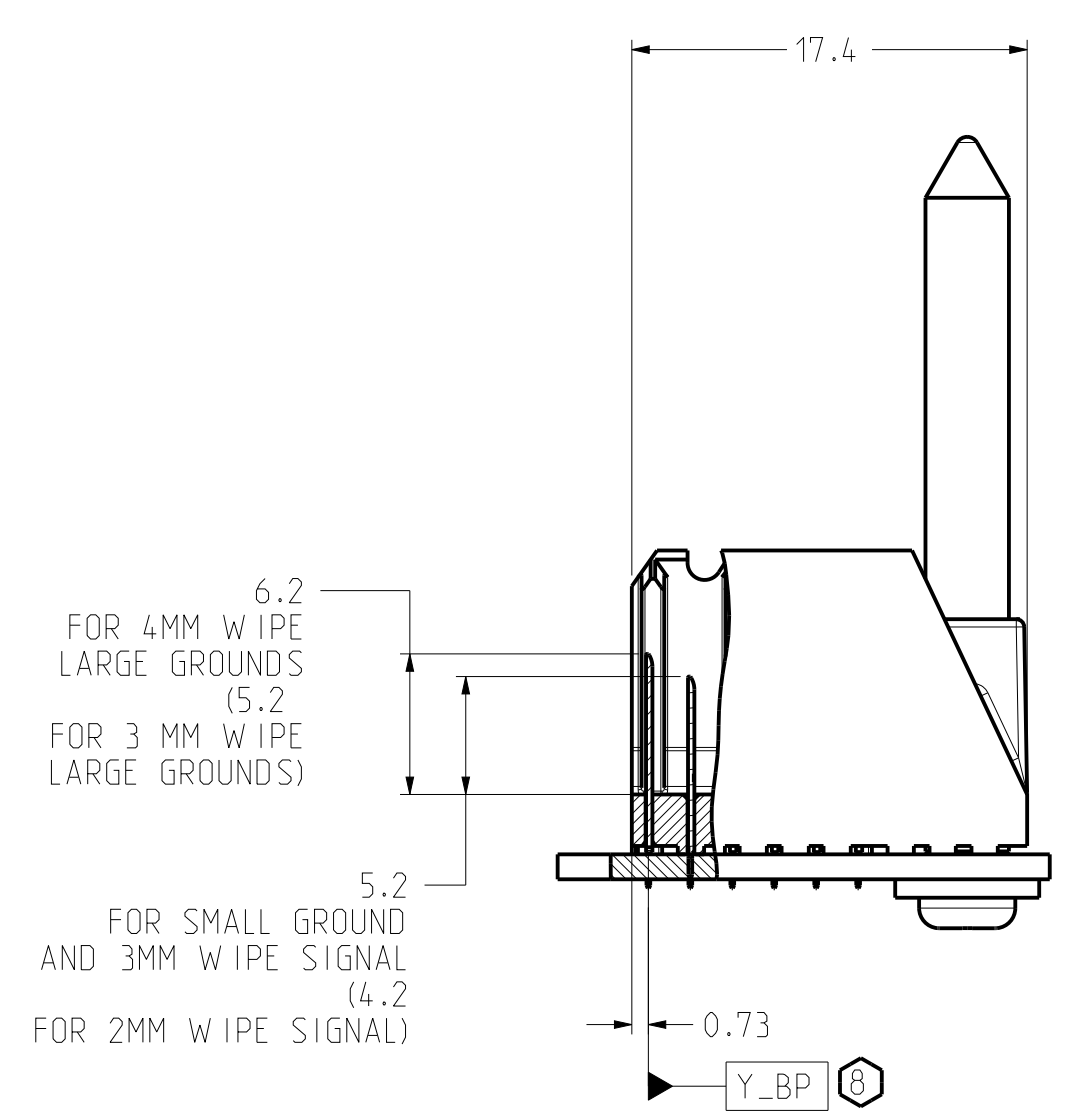
ZONE	REV	SCR NUMBER	DESCRIPTION	BY	DATE	APPROVED
			SEE SHEET 1			



RIGHT POLARIZING/GUIDE BACKPLANE MODULE DIMENSION



CONNECTOR REFERENCE SCALE 3/1



RIGHT POLARIZING/GUIDE BACKPLANE FOOTPRINT

BP HOLE PATTERN COMPONENT SIDE SCALE 8/1

TOLERANCES	DESIGN	DATE	DESIGNER
0.0 ±0.25	06/21/2012		J.GIROUX
0.0 ±0.13	06/21/2012		HCL-W.S
0.000 ± -	06/21/2012		J.DUNHAM
ANGLES ± 3°	06/21/2012		J.DUNHAM

Amphenol TCS
A Division of Amphenol Corporation
200 Innovative Way, Nashua, NH 03082 603.879.3000

TITLE	PART NO.	REV
BACKPLANE MODULES, VERTICAL MALE HEADER Xcede PLUS, 6 PAIR, 6 POSITION	SEE PN TREE SHEET 1	N/A
	C-940-600B-500	REV A
ASSEM 01213-CU-6PR-6POS-BP-ALL		1.4
DRAWING C940-600B-500		1.14

UNLESS OTHERWISE SPECIFIED DIMENSIONS ARE IN MM. DECIMAL MARKER IS A PERIOD
INTERPRET PER ASME Y14.5M
CODE IDENT 31413

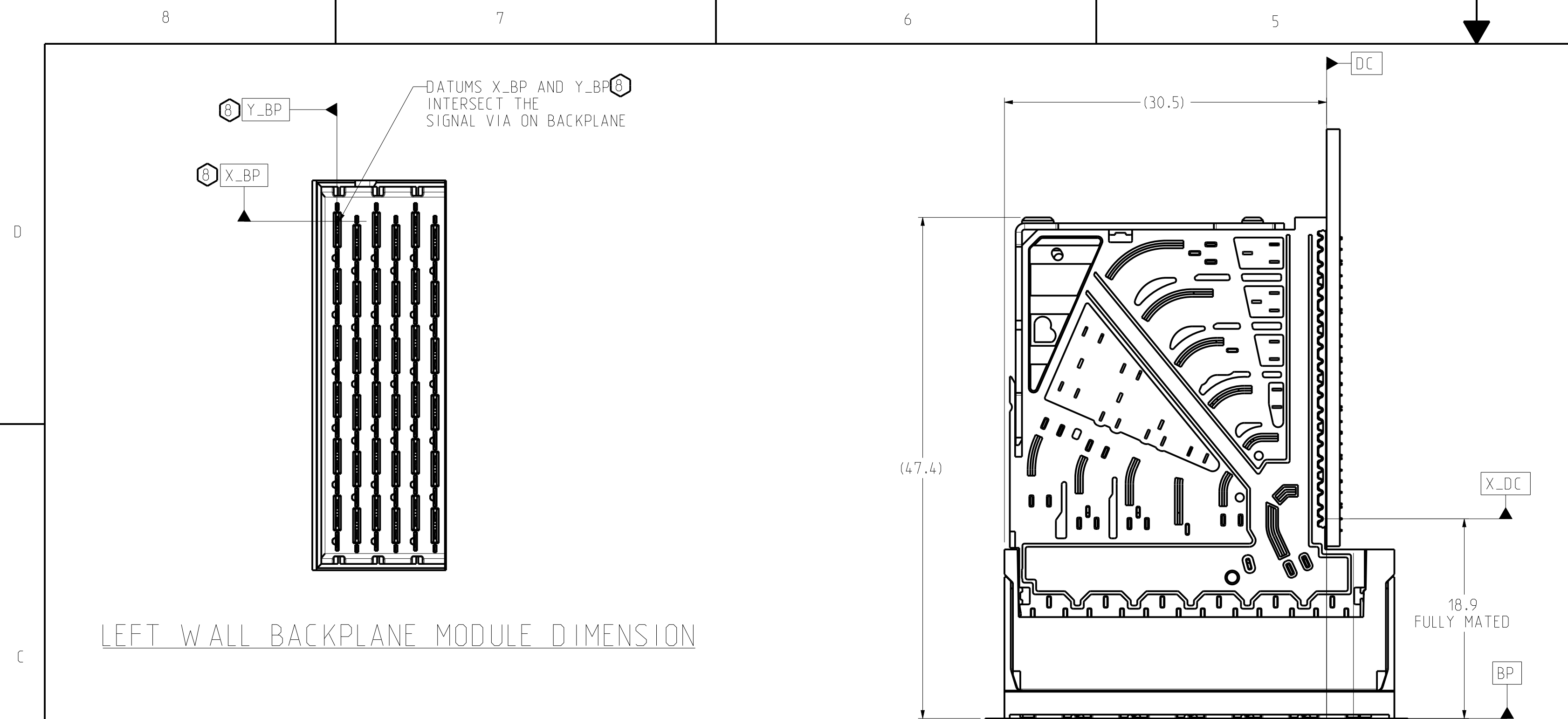
CUSTOMER USE DRAWING

SIZE	SCALE	SHEET
D	1/1	4 OF 8

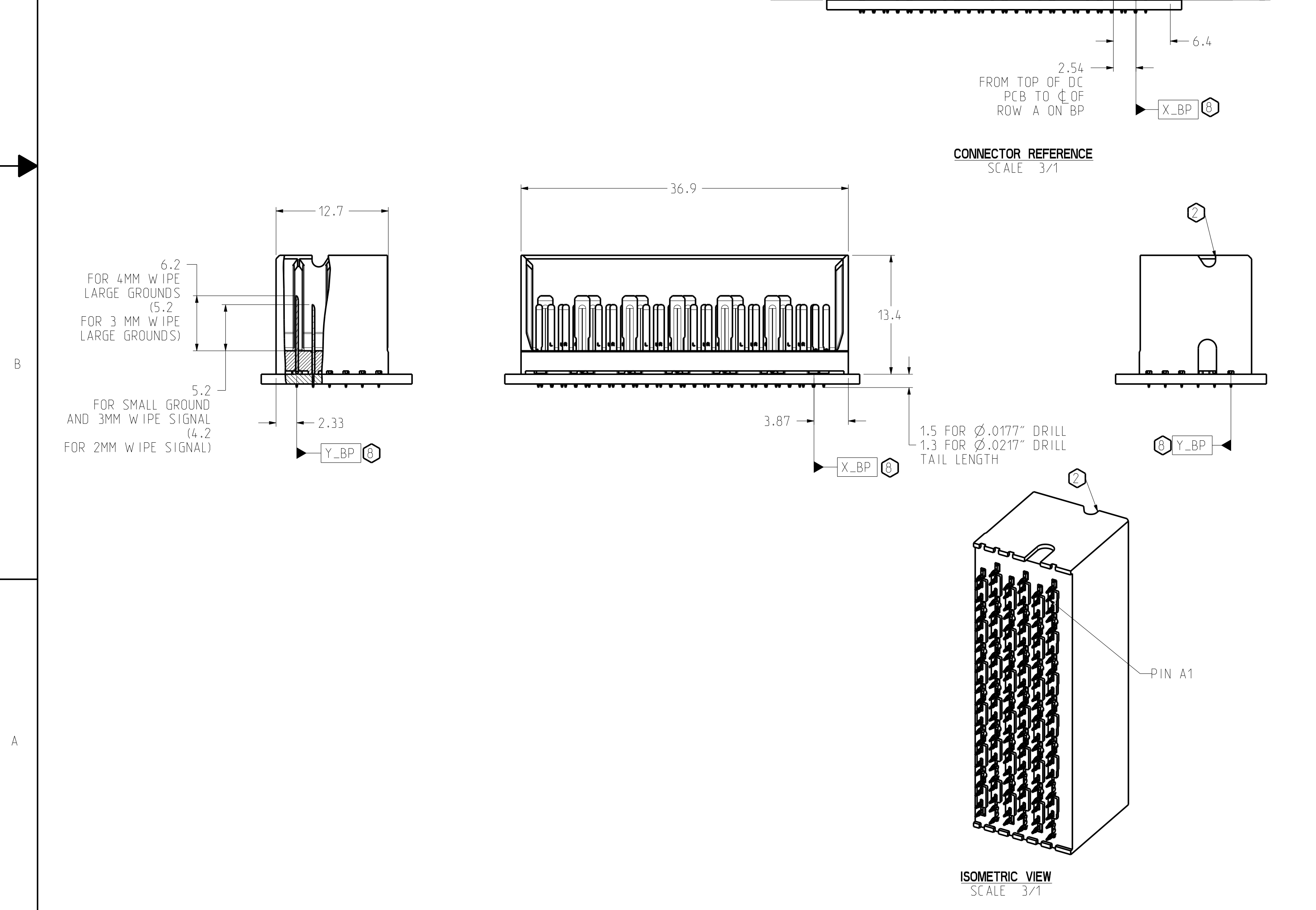
C-940-600B-500

REV A

ZONE	REV	SCR NUMBER	DESCRIPTION	BY	DATE	APPROVED
			SEE SHEET 1			

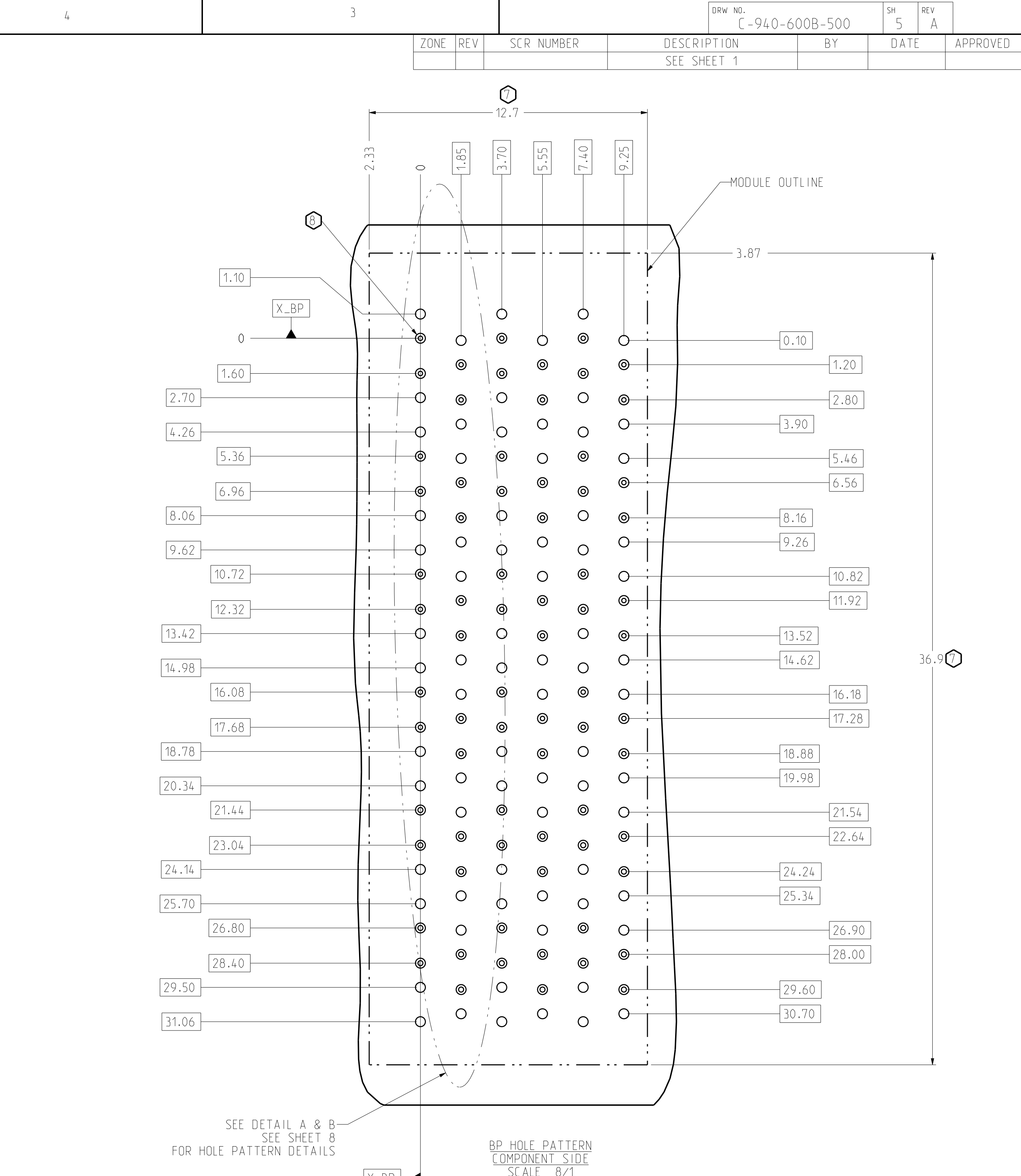


LEFT WALL BACKPLANE MODULE DIMENSION



CONNECTOR REFERENCE SCALE 3/1

ISOMETRIC VIEW SCALE 3/1



LEFT WALL BACKPLANE FOOTPRINT

TOLERANCES		DESIGN	Amphenol TCS	
0.0	±0.25	06/21/2012	A Division of Amphenol Corporation	
0.00	±0.13	J.GIROUX	200 Innovative Way, Nashua, NH 03082 803.879.3000	
0.000	± -	HCL-W.S	TITLE BACKPLANE MODULES, VERTICAL MALE HEADER	
ANGLES	± 3°	J.DUNHAM	XCede PLUS, 6 PAIR, 6 POSITION	
UNLESS OTHERWISE SPECIFIED DIMENSIONS ARE IN MM. DECIMAL MARKER IS A PERIOD			PART NO.	REV
			SEE PN TREE SHEET 1	N/A
			DRAWING NO.	REV
			C-940-600B-500	A
			ASSEM 01213-CU-6PR-6POS-BP-ALL	1.4
			DRAWING C940-600B-500	1.14
SIZE	D	SCALE	1/1	SHEET
				5 OF 8

CUSTOMER USE DRAWING

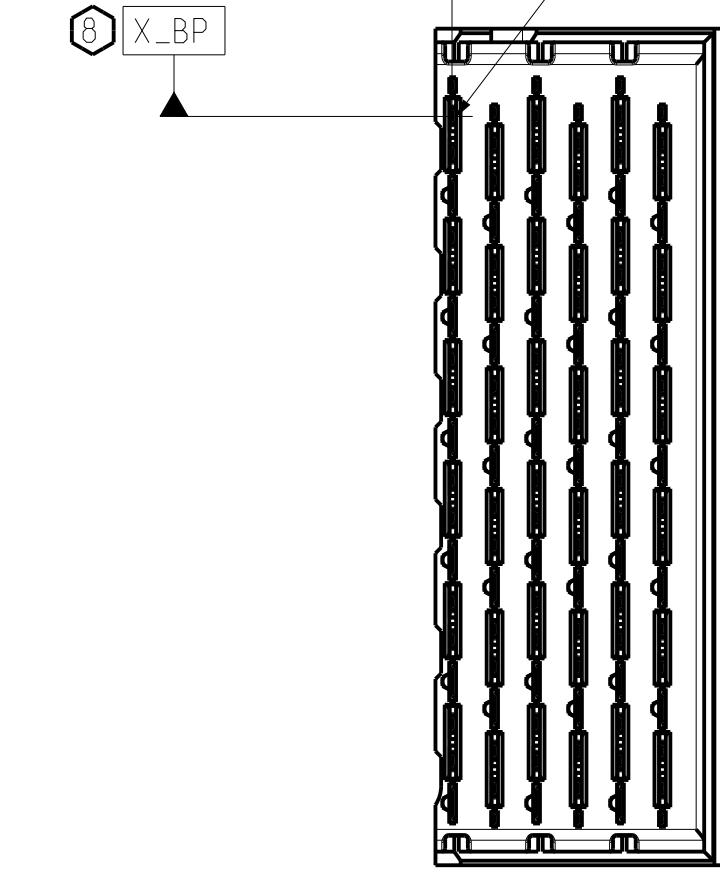
INTERPRET PER ASME Y14.5M
CODE IDENT 31413

C-940-600B-500

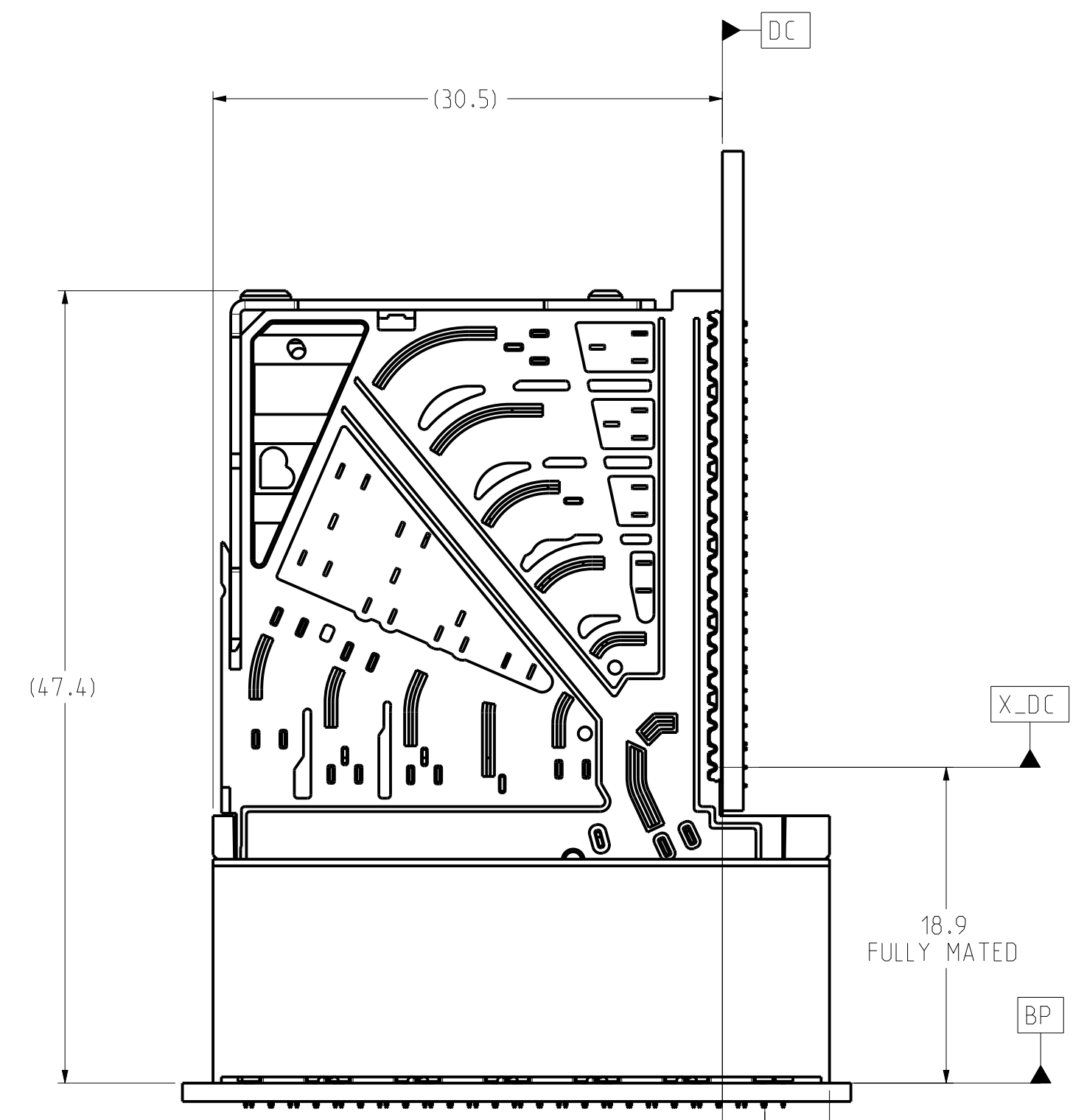
SH 5 REV A

ZONE	REV	SCR NUMBER	DESCRIPTION	BY	DATE	APPROVED
			SEE SHEET 1			

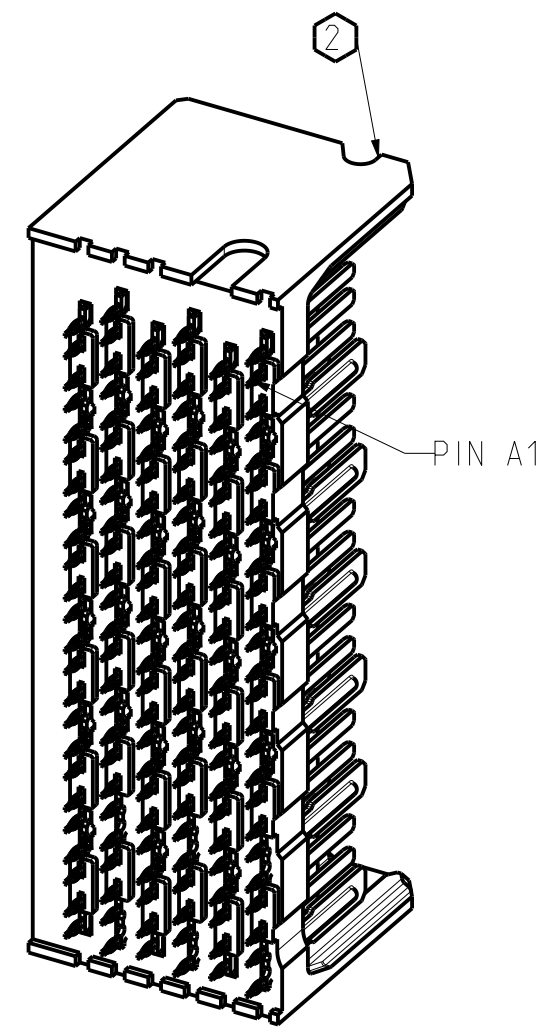
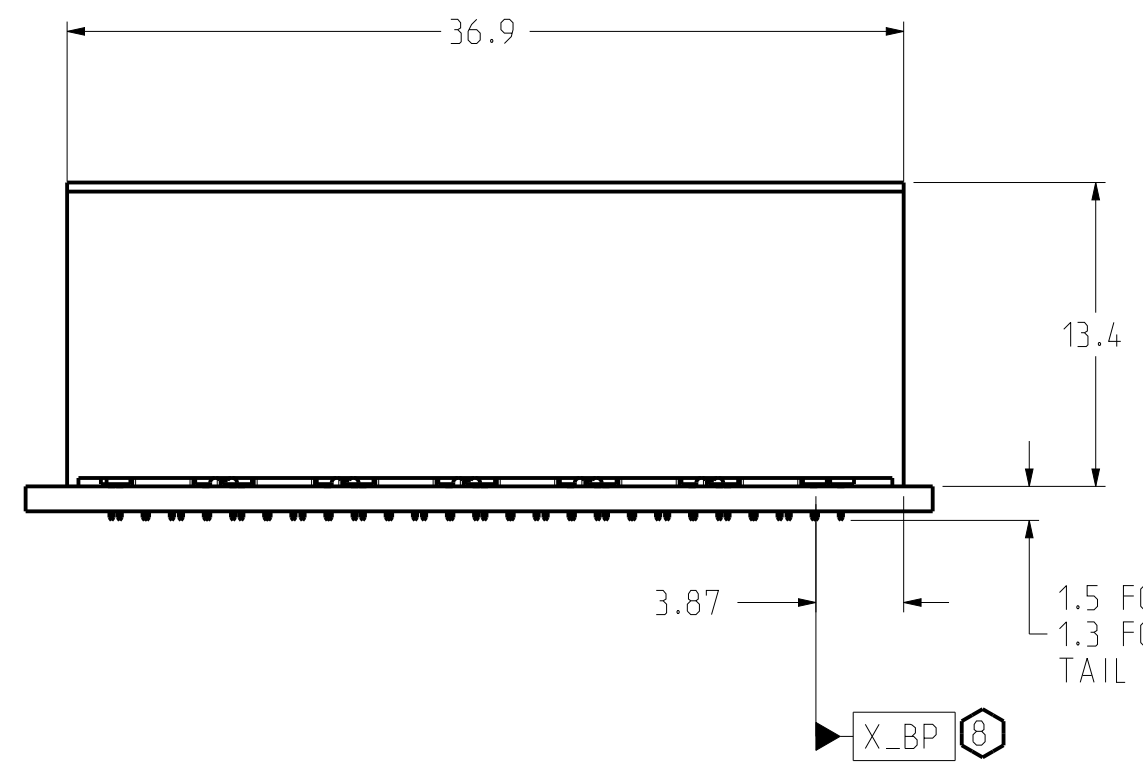
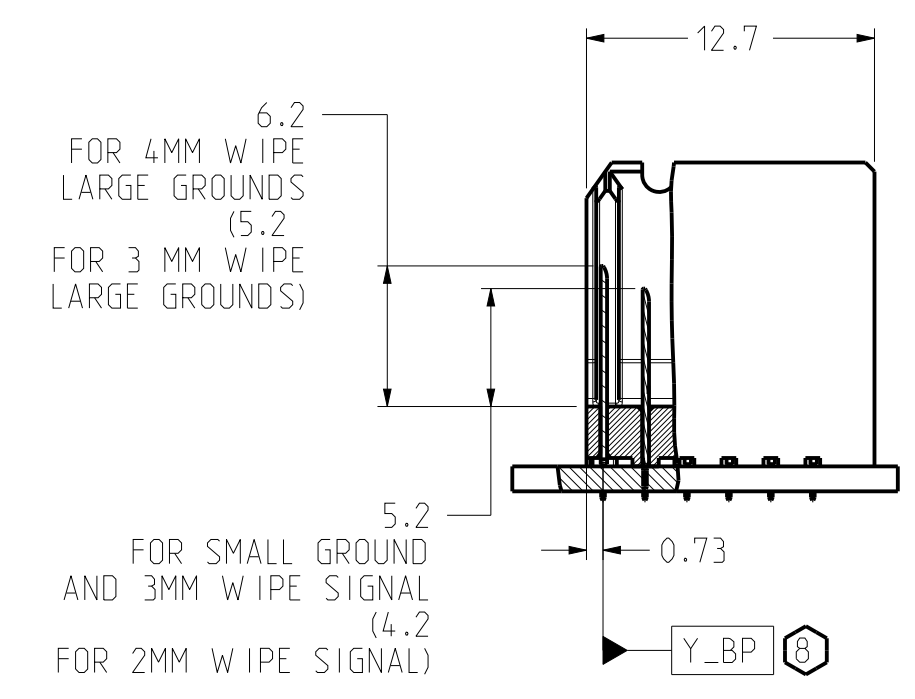
DATUMS X_BP AND Y_BP INTERSECT THE SIGNAL VIA ON BACKPLANE



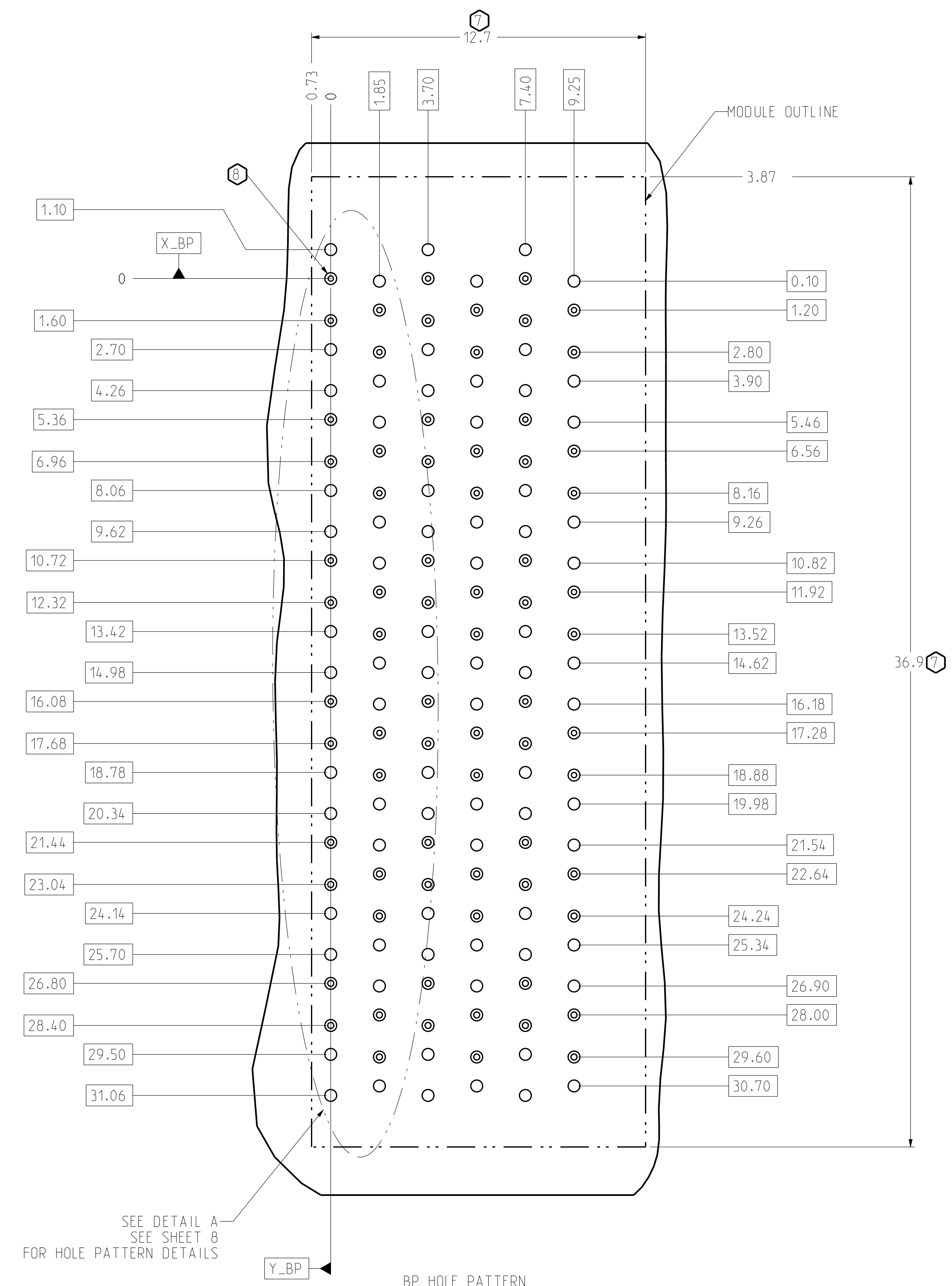
RIGHT WALL BACKPLANE MODULE DIMENSION



2.54 FROM TOP OF DC PCB TO ϕ OF ROW A ON BP
CONNECTOR REFERENCE
 SCALE 3/1



ISOMETRIC VIEW
 SCALE 3/1



SEE DETAIL A SEE SHEET 8 FOR HOLE PATTERN DETAILS

RIGHT WALL BACKPLANE FOOTPRINT

TOLERANCES		DESIGN	Amphenol TCS	
0.0	± 0.25	06/21/2012	A Division of Amphenol Corporation	
0.00	± 0.13	J.GIROUX	200 Innovative Way, Nashua, NH 03062 803.879.3000	
0.000	$\pm -$	HCL-W.S.	TITLE BACKPLANE MODULES, VERTICAL MALE HEADER Xcede PLUS, 6 PAIR, 6 POSITION	
ANGLES	$\pm 3^\circ$	J.DUNHAM	PART NO.	SEE PN TREE SHEET 1
UNLESS OTHERWISE SPECIFIED DIMENSIONS ARE IN MM. DECIMAL MARKER IS A PERIOD.			REV	N/A
			REV	A
			DRAWING NO.	C-940-600B-500
			ASSEM	Q1213-CU-6PR-6POS-BP-ALL 1.4
			DRAWING	C940-600B-500 1.14
SIZE	D	SCALE	1/1	SHEET 6 OF 8

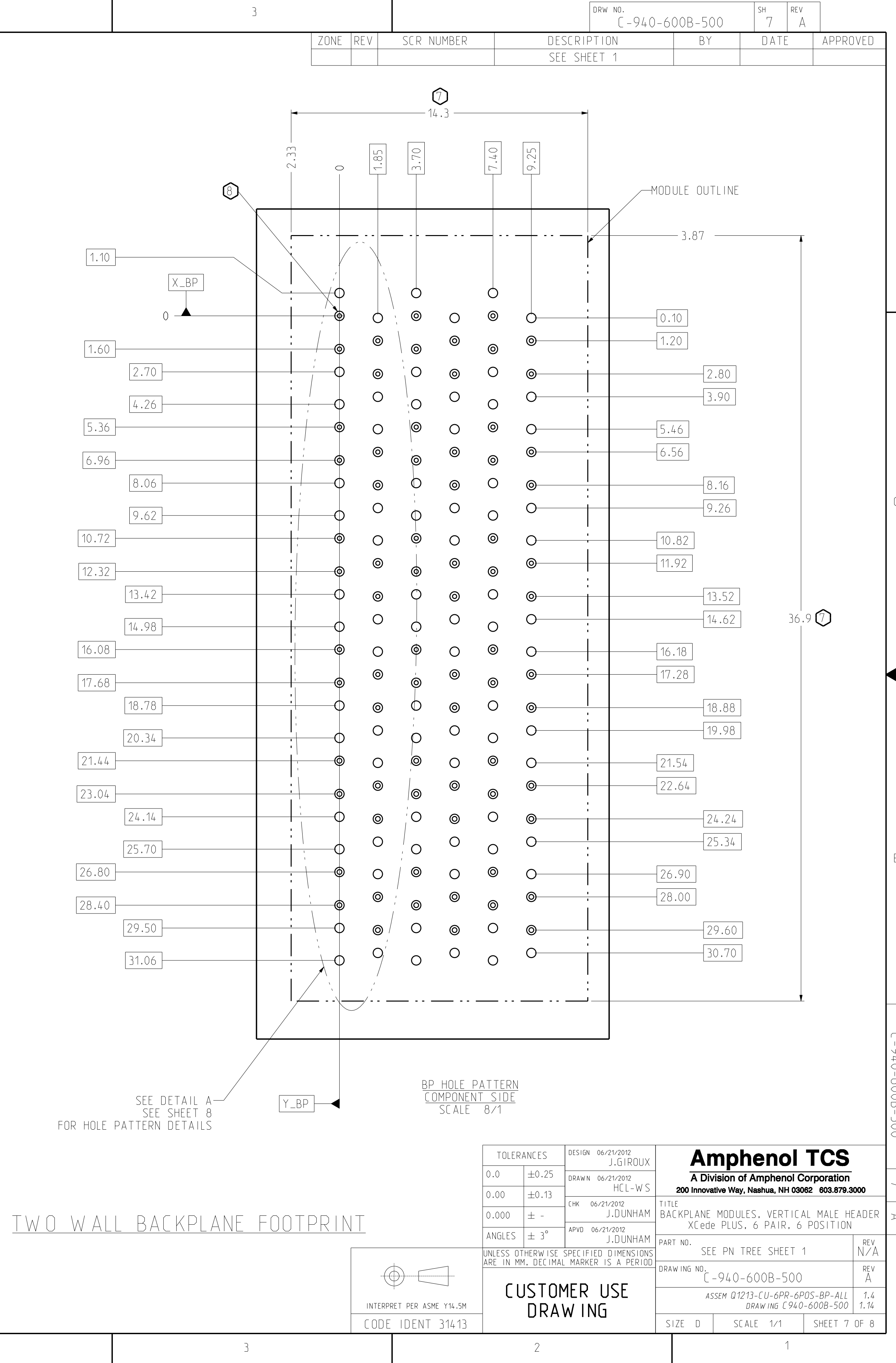
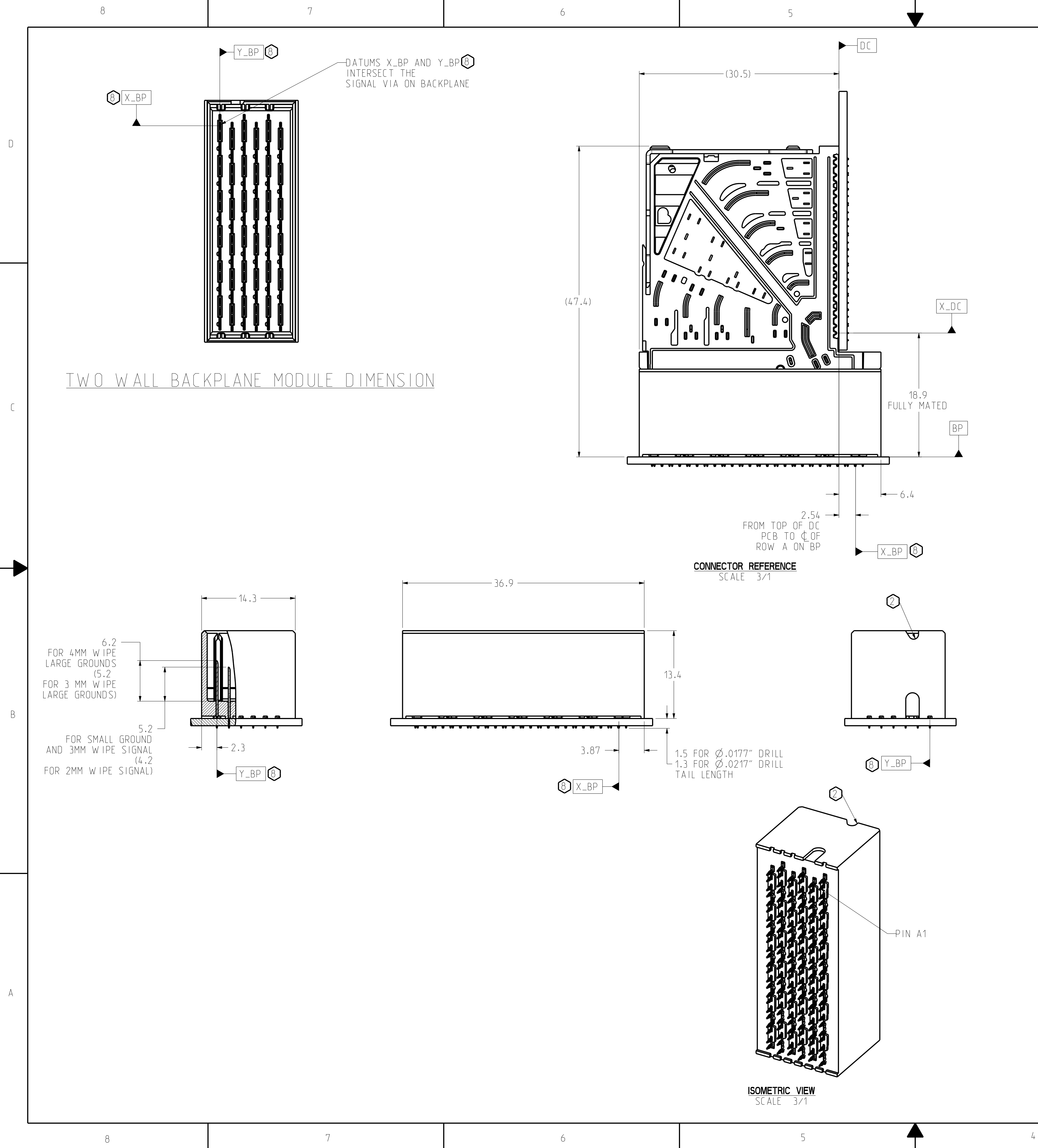
INTERPRET PER ASME Y14.5M
 CODE IDENT 31413

CUSTOMER USE
 DRAWING

C-940-600B-500

SH 6 REV A

ZONE	REV	SCR NUMBER	DESCRIPTION	BY	DATE	APPROVED
			SEE SHEET 1			



TOLERANCES	DESIGN	DATE	DESIGNER	Amphenol TCS A Division of Amphenol Corporation 200 Innovative Way, Nashua, NH 03062 603.879.3000	TITLE BACKPLANE MODULES, VERTICAL MALE HEADER XCede PLUS, 6 PAIR, 6 POSITION
0.0 ±0.25	J.GIROUX	06/21/2012			
0.0 ±0.13	HCL-W.S	06/21/2012			
0.000 ± -	J.DUNHAM	06/21/2012			
ANGLES ± 3°	J.DUNHAM	06/21/2012		PART NO. SEE PN TREE SHEET 1 DRAWING NO. C-940-600B-500 ASSEM 01213-CU-6PR-6POS-BP-ALL DRAWING C940-600B-500	REV N/A REV A 1.4 1.14

UNLESS OTHERWISE SPECIFIED DIMENSIONS ARE IN MM. DECIMAL MARKER IS A PERIOD

INTERPRET PER ASME Y14.5M
CODE IDENT 31413

**CUSTOMER USE
DRAWING**

C-940-600B-500

SH 7 REV A

8

7

6

5

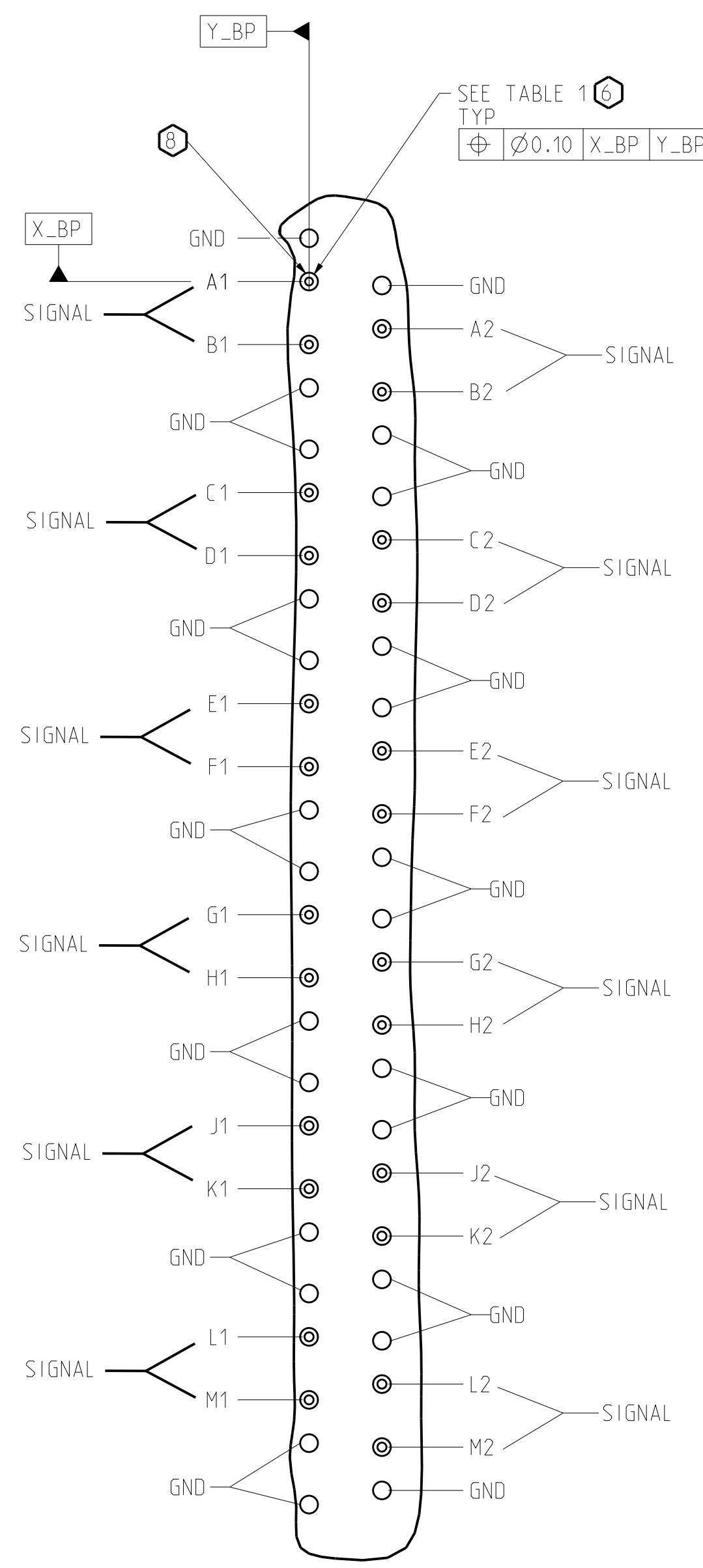
4

3

DRW NO. C-940-600B-500 SH 8 REV A

ZONE	REV	SCR NUMBER	DESCRIPTION	BY	DATE	APPROVED
			SEE SHEET 1			

	COMPLIANT PIN DRILL $\varnothing 0.0217"$	COMPLIANT PIN DRILL $\varnothing 0.0177"$
PTH	$\varnothing 0.45 \pm 0.05$	$\varnothing 0.36 \pm 0.05$
DRILL	$\varnothing 0.55 [1.0217"]$	$\varnothing 0.45 [1.0177"]$
PAD	$\varnothing 0.85$	$\varnothing 0.75$



DETAIL A
HSD HOLE PATTERN
SCALE 8/1

TOLERANCES	DESIGN 06/21/2012 J.GIROUX	Amphenol TCS A Division of Amphenol Corporation 200 Innovative Way, Nashua, NH 03082 603.879.3000	TITLE	BACKPLANE MODULES, VERTICAL MALE HEADER XCede PLUS, 6 PAIR, 6 POSITION	
0.0 ±0.25	DRAWN 06/21/2012 HCL-WS		PART NO.	SEE PN TREE SHEET 1	
0.00 ±0.13	CHK 06/21/2012 J.DUNHAM		DRAWING NO.	C-940-600B-500	
0.000 ± -	APVD 06/21/2012 J.DUNHAM		UNLESS OTHERWISE SPECIFIED DIMENSIONS ARE IN MM. DECIMAL MARKER IS A PERIOD	ASSEM 01213-CU-6PR-6POS-BP-ALL DRAWING C940-600B-500	
ANGLES ± 3°			SIZE D	SCALE 1/1	SHEET 8 OF 8

INTERPRET PER ASME Y14.5M
CODE IDENT 31413

**CUSTOMER USE
DRAWING**

C-940-600B-500

SH 8 REV A