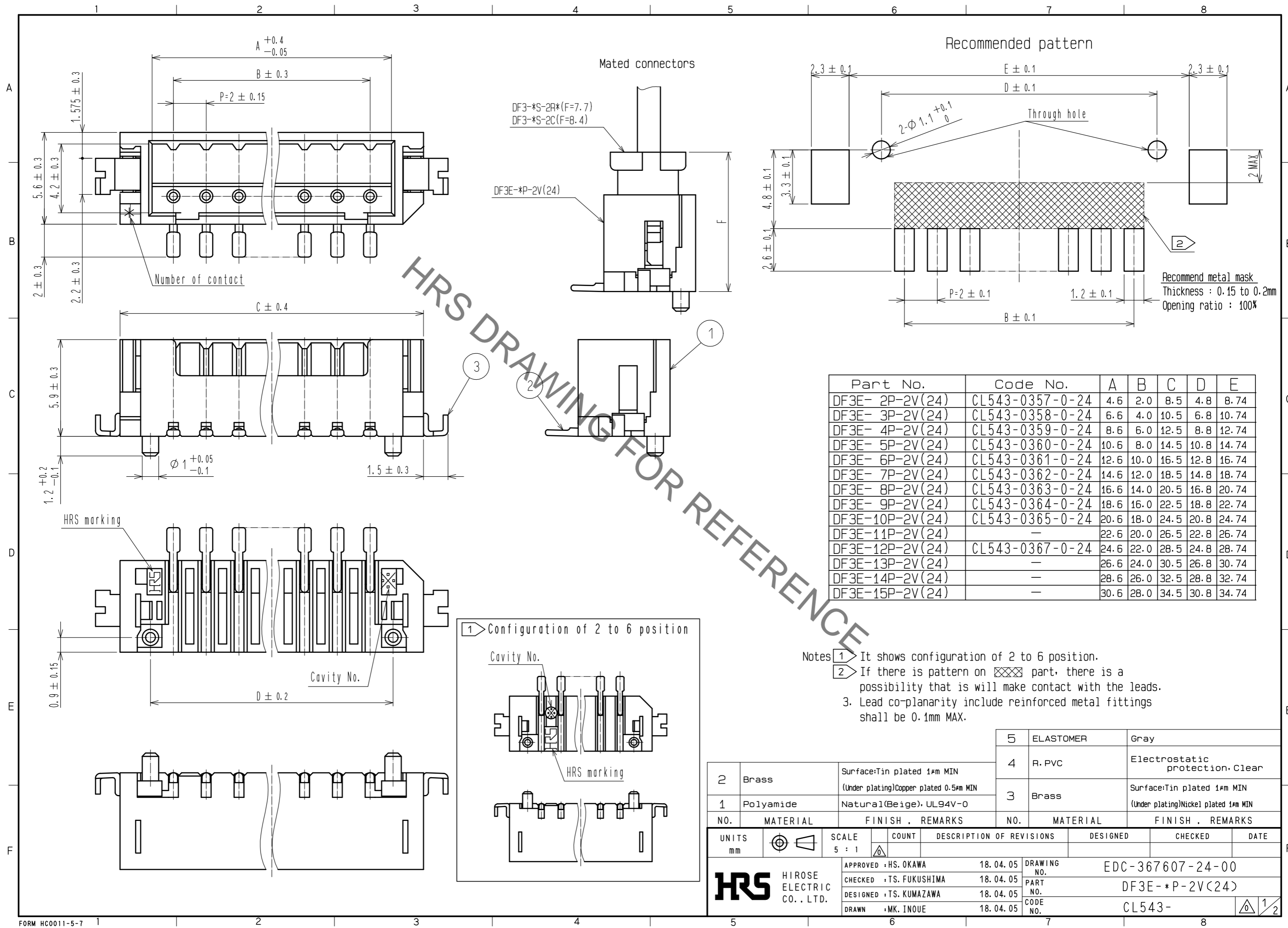


Jun.1.2020 Copyright 2020 HIROSE ELECTRIC CO., LTD. All Rights Reserved.  
In case of consideration for using Automotive equipment / device which demand high reliability, kindly contact our sales window correspondents.



Part No.	Code No.	A	B	C	D	E
DF3E- 2P-2V(24)	CL543-0357-0-24	4.6	2.0	8.5	4.8	8.74
DF3E- 3P-2V(24)	CL543-0358-0-24	6.6	4.0	10.5	6.8	10.74
DF3E- 4P-2V(24)	CL543-0359-0-24	8.6	6.0	12.5	8.8	12.74
DF3E- 5P-2V(24)	CL543-0360-0-24	10.6	8.0	14.5	10.8	14.74
DF3E- 6P-2V(24)	CL543-0361-0-24	12.6	10.0	16.5	12.8	16.74
DF3E- 7P-2V(24)	CL543-0362-0-24	14.6	12.0	18.5	14.8	18.74
DF3E- 8P-2V(24)	CL543-0363-0-24	16.6	14.0	20.5	16.8	20.74
DF3E- 9P-2V(24)	CL543-0364-0-24	18.6	16.0	22.5	18.8	22.74
DF3E-10P-2V(24)	CL543-0365-0-24	20.6	18.0	24.5	20.8	24.74
DF3E-11P-2V(24)	—	22.6	20.0	26.5	22.8	26.74
DF3E-12P-2V(24)	CL543-0367-0-24	24.6	22.0	28.5	24.8	28.74
DF3E-13P-2V(24)	—	26.6	24.0	30.5	26.8	30.74
DF3E-14P-2V(24)	—	28.6	26.0	32.5	28.8	32.74
DF3E-15P-2V(24)	—	30.6	28.0	34.5	30.8	34.74

NO.	MATERIAL	FINISH .	REMARKS	NO.	MATERIAL	FINISH .	REMARKS
2	Brass	Surface: Tin plated 1μm MIN (Under plating) Copper plated 0.5μm MIN		5	ELASTOMER		Gray
1	Polyamide	Natural(Beige), UL94V-0		4	R. PVC		Electrostatic protection, Clear
				3	Brass	Surface: Tin plated 1μm MIN (Under plating) Nickel plated 1μm MIN	

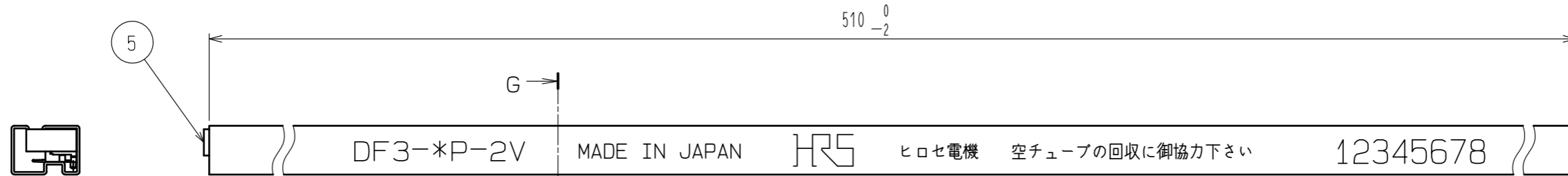
  

UNITS	SCALE	COUNT	DESCRIPTION OF REVISIONS	DESIGNED	CHECKED	DATE
mm	5 : 1	△				

APPROVED : HS. OKAWA	18.04.05	DRAWING NO.	EDC-367607-24-00
CHECKED : TS. FUKUSHIMA	18.04.05	PART NO.	DF3E-*P-2V(24)
DESIGNED : TS. KUMAZAWA	18.04.05	CODE NO.	CL543-
DRAWN : MK. INOUE	18.04.05		

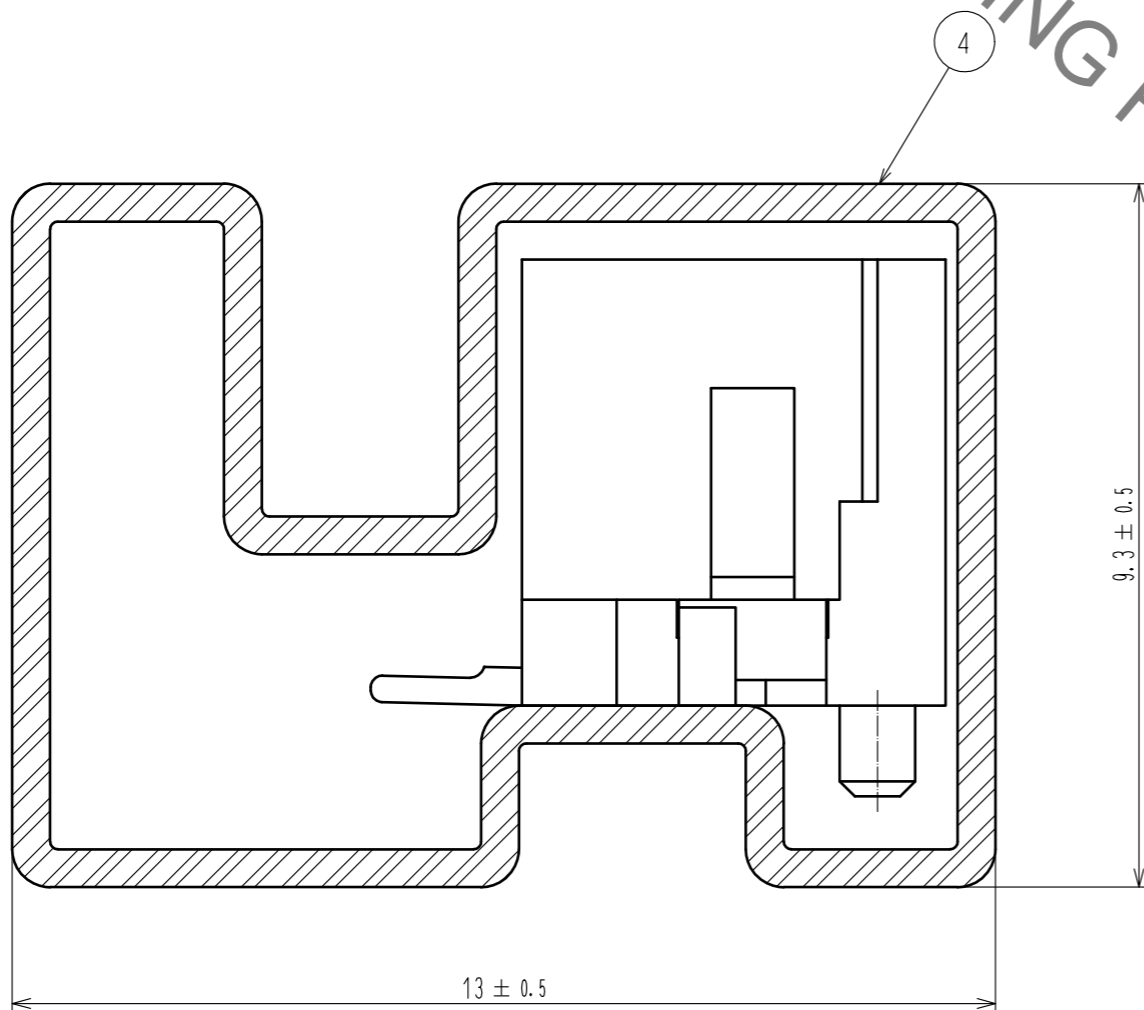
Jun.1.2020 Copyright 2020 HIROSE ELECTRIC CO., LTD. All Rights Reserved.  
 In case of consideration for using Automotive equipment / device which demand high reliability, kindly contact our sales window correspondents.



HRS DRAWING FOR REFERENCE

- Notes 4. Number of connectors per a magazine case shall be in accordance with the list.  
 5. These connectors shall be on saled in accordance with the multiple quantity on the list.

G-G (10 : 1)



Part No.	Code No.	Number of connectors
DF3E- 2P-2V(24)	CL543-0357-0-24	41
DF3E- 3P-2V(24)	CL543-0358-0-24	34
DF3E- 4P-2V(24)	CL543-0359-0-24	30
DF3E- 5P-2V(24)	CL543-0360-0-24	26
DF3E- 6P-2V(24)	CL543-0361-0-24	23
DF3E- 7P-2V(24)	CL543-0362-0-24	21
DF3E- 8P-2V(24)	CL543-0363-0-24	19
DF3E- 9P-2V(24)	CL543-0364-0-24	18
DF3E-10P-2V(24)	CL543-0365-0-24	17
DF3E-11P-2V(24)	—	15
DF3E-12P-2V(24)	CL543-0367-0-24	14
DF3E-13P-2V(24)	—	14
DF3E-14P-2V(24)	—	13
DF3E-15P-2V(24)	—	12

<b>HRS</b>	DRAWING NO.	EDC-367607-24-00	
	PART NO.	DF3E-*P-2V(24)	
	CODE NO.	CL543-	2/2