



RL-7100

LOW COST 50/60 Hz CURRENT SENSORS

DESCRIPTION

- Low Cost Current Sensors

ENVIRONMENTAL DATA

- Storage temperature range: -55°C to +130°C
- Operating temperature range: -40°C to +130°C

PACKAGING INFORMATION

- Packaging information: pg. 495

FEATURES & APPLICATIONS

- Molded aperture for primary wire(s)
- Frequency range from 47-400 Hz
- Meets IEC, VDE and UL specifications
- Low cost
- Typical applications include: switch gear/switch board, load sensing, power demand monitoring, power failure, loss of device, and status of loads

Verify operation with sample in actual circuit. Order samples at www.rencousa.com.

MECHANICAL DIMENSIONS

U.S. Standard (mm)

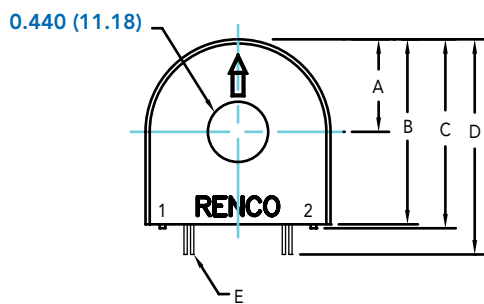
PART NUMBER	A (TYP.)	B (TYP.)	C (MAX.)	D (TYP.)	E (TYP.)	F (TYP.)	G (TYP.)
RL-7100	0.700 (17.78)	1.410 (35.81)	1.430 (36.32)	1.680 (42.67)	0.025 (0.64)	0.110 (2.79)	0.760 (19.30)

H (MAX.)	I (TYP.)	J (TYP.)	K (TYP.)	L (TYP.)	M (MAX.)	N
0.830 (21.08)	0.290 (7.37)	0.350 (8.89)	1.040 (26.42)	1.110 (28.19)	1.460 (37.08)	0.700 (17.78)

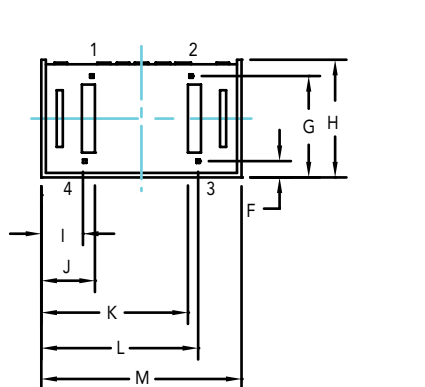
PART NUMBER	PART WEIGHT
RL-7100	49.0g (1.72oz)

O	P
0.600 (15.24)	0.800 (20.32)

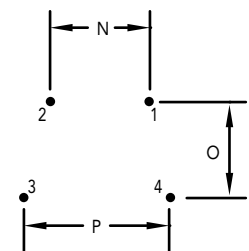
FRONT VIEW



BOTTOM VIEW



SCHEMATIC



RENCO ELECTRONICS INC.



595 International Place, Rockledge, FL 32955-4200 USA • www.rencousa.com • ISO 9001 Certified
Toll Free Engineering Hot Line: 800.645.5828 • P: 321.637.1000 • F: 321.637.1600

RL-7100

Renco Part No. RL-7100	I _p	V out (±2%)	V/A	RL Ohms	RL Watts	Turns Ratio	RS Ohms (Max.)
RL-7100-25-1000	0-25	2.5	0.1	100.0	0.25	1000:1	32.20
RL-7100-50-1000	0-50	5.0	0.1	100.0	0.50	1000:1	63.30
RL-7100-100-1000	0-100	10.0	0.1	100.0	1.00	1000:1	26.50
RL-7100-200-1000	0-200	20.0	0.1	100.0	5.00	1000:1	16.30

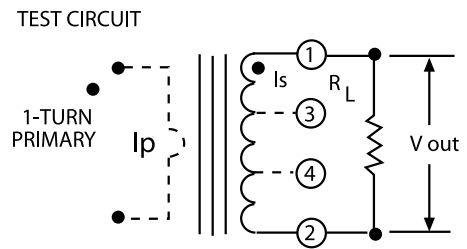
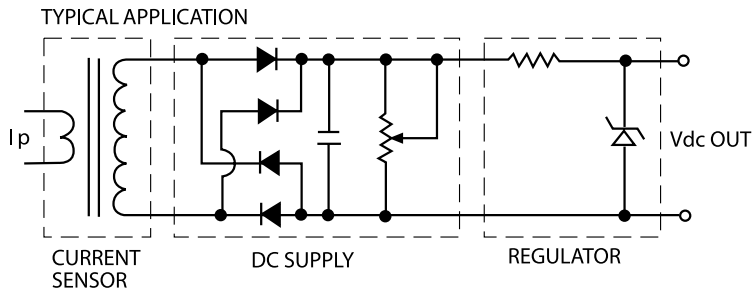
Renco Part No. RL-7100	Frequency Hz	Overload Current Amps	Dielectric Withstanding Volts rms	WT Grams (Max.)
RL-7100-25-1000	47-400	30.0	6000.0	30g
RL-7100-50-1000	47-400	65.0	6000.0	42g
RL-7100-100-1000	47-400	160.0	6000.0	57g
RL-7100-200-1000	47-400	250.0	6000.0	67g

NOTES:

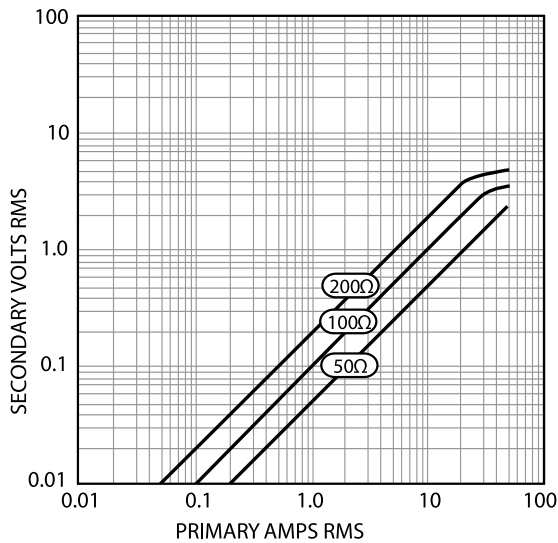
1. I_p: PRIMARY CURRENT
2. V/A: OUTPUT PER INPUT AMPS
3. RL: TERMINATING RESISTOR
4. RS: WINDING RESISTANCE
5. OVERLOAD CURRENT RATED FOR A 100 OHM TERMINATING RESISTOR
6. OVERLOAD CURRENT FOR RL-7100-25-100 RISES TO 50 AMPS WHEN USING A 50 OHM TERMINATING RESISTOR
7. ELECTRICAL SPECIFICATIONS MEASURED AT 25°C
8. THE TERMINATING RESISTOR AND THE ONE-TURN PRIMARY ARE CUSTOMER SUPPLIED
9. PINS 3 AND 4 ARE USED FOR MECHANICAL SUPPORT, MAY ALSO BE USED FOR CENTER TAP AND OTHER CUSTOM DESIGNS
10. ALL MATERIALS CONFORM TO UL94-V0
11. MANUFACTURED TO UL CLASS B INSULATION (130°C)



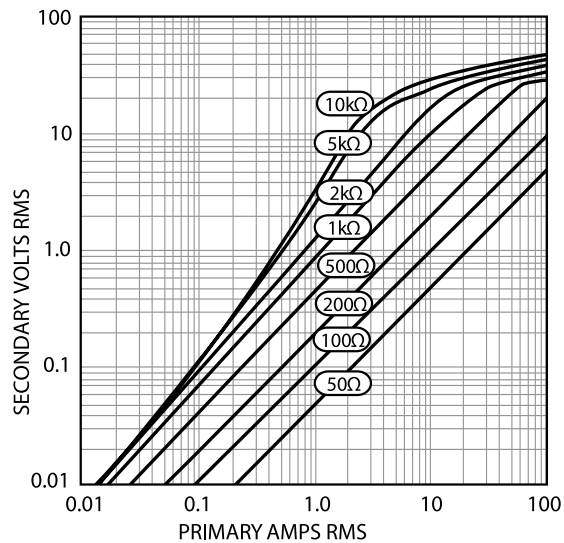
RL-7100



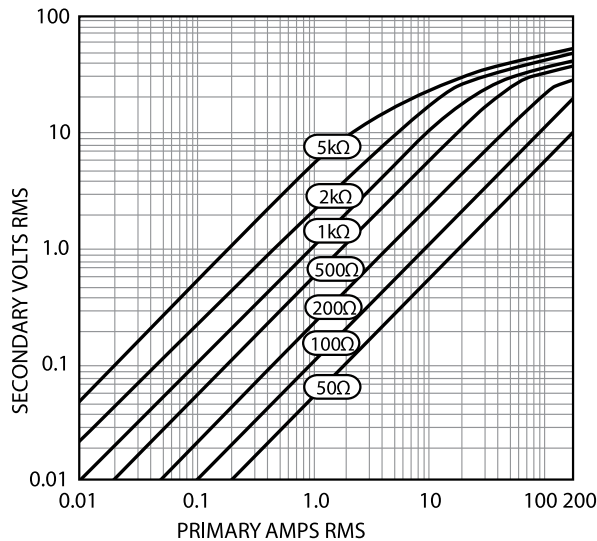
RL-7100-25-1000
OUTPUT VOLTS VS. INPUT AMPS



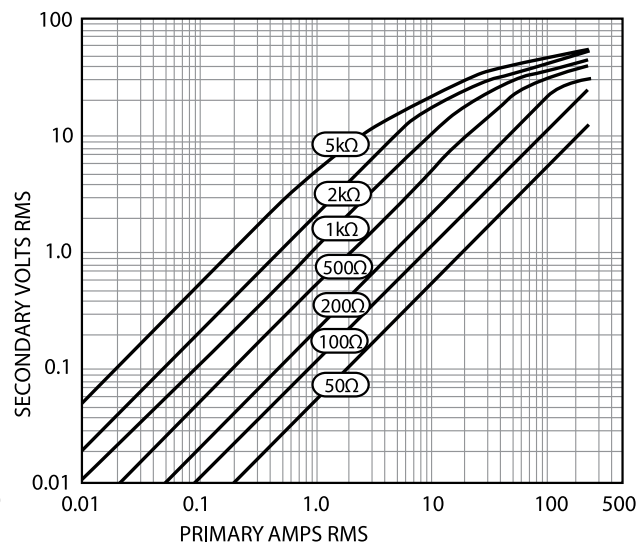
RL-7100-50-1000
OUTPUT VOLTS VS. INPUT AMPS



RL-7100-100-1000
OUTPUT VOLTS VS. INPUT AMPS



RL-7100-200-1000
OUTPUT VOLTS VS. INPUT AMPS



NOTES:

1. I_p : PRIMARY CURRENT
2. V/A: OUTPUT PER INPUT AMPS
3. R_L : TERMINATING RESISTOR
4. R_s : WINDING RESISTANCE
5. OVERLOAD CURRENT RATED FOR A 100 OHM TERMINATING RESISTOR
6. OVERLOAD CURRENT FOR RL-7100-25-100 RISES TO 50 AMPS WHEN USING A 50 OHM TERMINATING RESISTOR
7. ELECTRICAL SPECIFICATIONS MEASURED AT 25°C
8. THE TERMINATING RESISTOR AND THE ONE-TURN PRIMARY ARE CUSTOMER SUPPLIED
9. PINS 3 AND 4 ARE USED FOR MECHANICAL SUPPORT, MAY ALSO BE USED FOR CENTER TAP AND OTHER CUSTOM DESIGNS
10. ALL MATERIALS CONFORM TO UL94-V0
11. MANUFACTURED TO UL CLASS B INSULATION (130°C)



RENCO ELECTRONICS INC.

595 International Place, Rockledge, FL 32955-4200 USA • www.rencousa.com • ISO 9001 Certified
Toll Free Engineering Hot Line: 800.645.5828 • P: 321.637.1000 • F: 321.637.1600

