



Frontier Electronics Corp.

667 E. COCHRAN STREET, SIMI VALLEY, CA 93065

TEL: (805) 522-9998 FAX: (805) 522-9989

E-mail: frontiersales@frontierusa.com

Web: <http://www.frontierusa.com>

3A GLASS PASSIVATED ULTRA FAST RECOVERY RECTIFIER

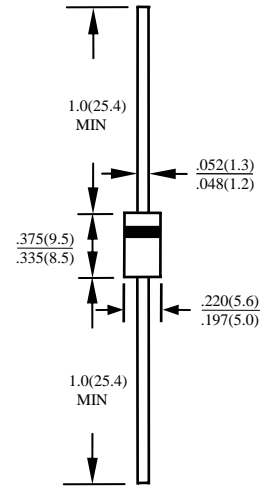
UF5400G THRU UF5408G

FEATURES

- PLASTIC PACKAGE HAS UNDERWRITERS LABORATORY FLAMMABILITY CLASSIFICATION 94V-0
- ULTRA FAST RECOVERY TIMES FOR HIGH EFFICIENCY
- LOW FORWARD VOLTAGE, HIGH CURRENT CAPABILITY
- LOW LEAKAGE
- HIGH SURGE CAPABILITY
- HIGH TEMPERATURE SOLDERING GUARANTEED
260°C/0.375" (9.5mm) LEAD LENGTHS FOR 10 SECONDS AT 5 LBS. (2.3 KG) TENSION.
- GLASS PASSIVATED JUNCTION

MECHANICAL DATA

- CASE: JEDEC DO-201AD, MOLDED PLASTIC, DIMENSIONS IN INCHES AND (MILLIMETERS)
- TERMINALS: AXIAL LEADS SOLDERABLE PER MIL-STD-202, METHOD 208
- POLARITY: COLOR BAND DENOTES CATHODE END
- MOUNTING POSITION: ANY
- WEIGHT: 1.2 GRAM



MAXIMUM RATINGS AND ELECTRICAL CHARACTERISTICS RATINGS AT 25°C AMBIENT TEMPERATURE UNLESS OTHERWISE SPECIFIED SINGLE PHASE, HALF WAVE, 60 HZ, RESISTIVE OR INDUCTIVE LOAD. FOR CAPACITIVE LOAD, DERATE CURRENT BY 20%

RATINGS	SYMBOL	UF 5400G	UF 5401G	UF 5402G	UF 5403G	UF 5404G	UF 5406G	UF 5407G	UF 5408G	UNITS	
MAXIMUM RECURRENT PEAK REVERSE VOLTAGE	V_{RRM}	50	100	200	300	400	600	800	1000	V	
MAXIMUM RMS VOLTAGE	V_{RMS}	35	70	140	210	280	420	560	700	V	
MAXIMUM DC BLOCKING VOLTAGE	V_{DC}	50	100	200	300	400	600	800	1000	V	
MAXIMUM AVERAGE FORWARD RECTIFIED CURRENT 0.375"(9.5mm) LEAD LENGTH AT TA=55°C	I_O	3.0								A	
PEAK FORWARD SURGE CURRENT, 8.3ms SINGLE HALF SINE-WAVE SUPERIMPOSED ON RATED LOAD	I_{FSM}	150								A	
TYPICAL JUNCTION CAPACITANCE (NOTE 1)	C_J	75					50				PF
TYPICAL THERMAL RESISTANCE (NOTE 2)	$R_{\theta jc}$	20								°C/W	
STORAGE TEMPERATURE RANGE	T_{STG}	- 55 TO + 150								°C	
OPERATING TEMPERATURE RANGE	T_{OP}	- 55 TO + 150								°C	

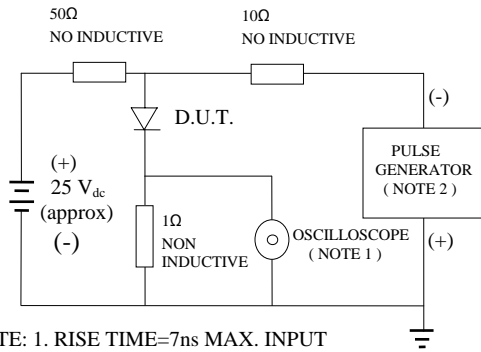
ELECTRICAL CHARACTERISTICS (A_T T_A =25°C UNLESS OTHERWISE NOTED)

CHARACTERISTICS	SYMBOL	UF 5400G	UF 5401G	UF 5402G	UF 5403G	UF 5404G	UF 5406G	UF 5407G	UF 5408G	UNITS	
MAXIMUM FORWARD VOLTAGE AT I _O DC	V_F	1.3					1.7				V
MAXIMUM DC REVERSE CURRENT AT TA=25°C	I_R	10								μA	
MAXIMUM DC REVERSE CURRENT AT TA=100°C	I_R	10								μA	
MAXIMUM REVERSE RECOVERY TIME (NOTE 3)	T_{RR}	50							75		nS

- NOTE: 1. MEASURED AT 1 MHZ AND APPLIED REVERSE VOLTAGE OF 4.0 VOLTS
 2. BOTH LEADS ATTACHED TO HEAT SINK 20x20x1t(mm) COPPER PLATE AT LEAD LENGTH 5mm
 3. REVERSE RECOVERY TEST CONDITIONS: I_F=0.5A, I_R=1.0A, I_{RR}=0.25

RATINGS AND CHARACTERISTIC CURVE UF5400G THRU UF5408G

FIG. 1-TEST CIRCUIT DIAGRAM AND REVERSE RECOVERY TIME CHARACTERISTIC



NOTE: 1. RISE TIME=7ns MAX. INPUT IMPEDANCE=1 MOhms 22PF
 2. RISE TIME =10ns MAX. SOURCE IMPEDANCE=50 OHMS

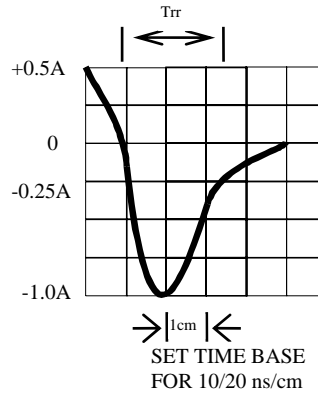


FIG. 2 -TYPICAL FORWARD CURRENT DERATING CURVE

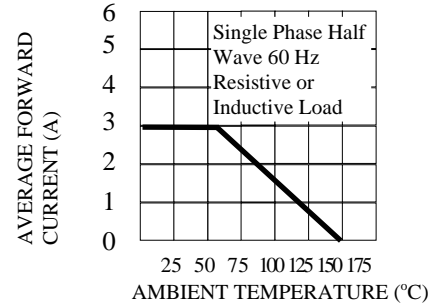


FIG. 3 -TYPICAL REVERSE CHARACTERISTICS

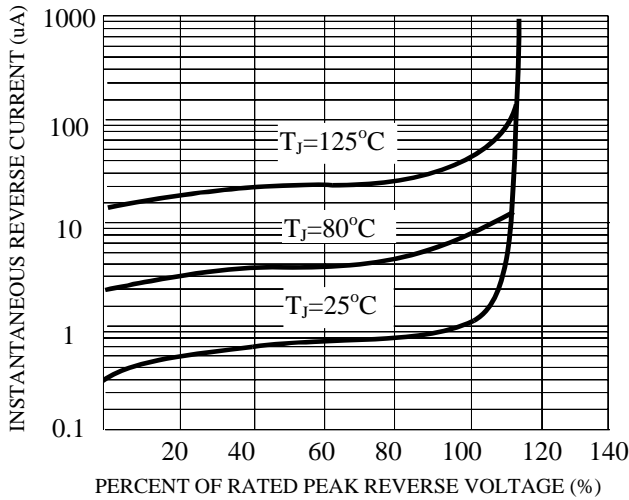


FIG. 4 -TYPICAL INSTANTANEOUS FORWARD CHARACTERISTICS

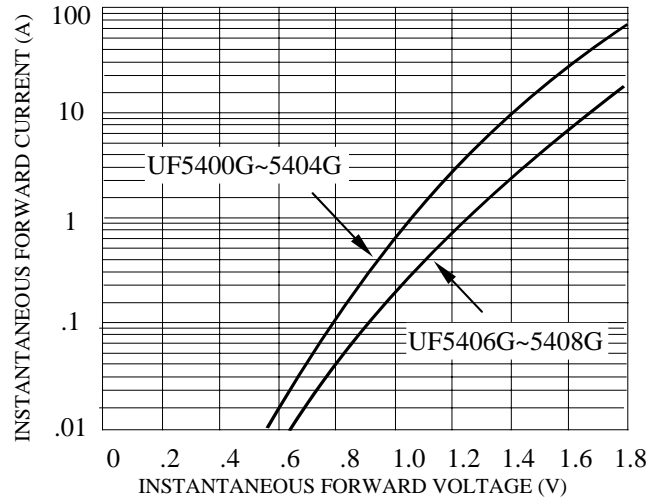


FIG. 5 -MAXIMUM NON-REPETITIVE FORWARD SURGE CURRENT

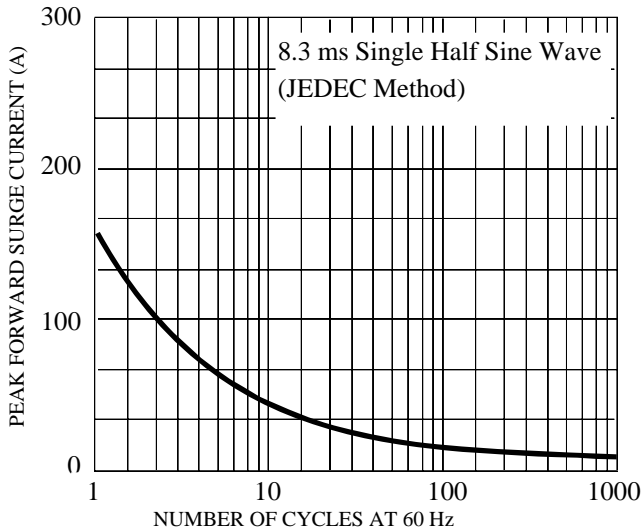


FIG. 6 -TYPICAL JUNCTION CAPACITANCE

