

RECEPTACLE

3	H
2	GI
1	H
REV. LTR. REVISIONS	

I	OBSOLETE P/N'S UCR2002-0270 COMERC1 01/9/18
H	ADD COLOR EDP'S UCR1999-0027 WANG 98-07-21
GI	REVISED UCR1998-0128 WANG 98-04-07
G	REV RAMP WIDTH ECN U2-1785 AFG 92-12-17 RW
F	DEL 94V-0 MAT'L ECR U2-1699 AFG 92-11-20 RW
E	REVISE PER ECR U2 0211 GC 2/10/92 RW
D2	RELEASE - IP/IRD ECR #U001845 9-5-91 RW
D1	ADD EDP NO'S PER ERO 30602 GC 11/6/90 RW
D	REVISED PER ECR #U00189 7-5-90 TRM
C	REVISED PER ECR #U90011 KBW 03-31-89 RW
B	REV. PICTORALLY ECR U2-1588 GEP 12-15-88 RW
A	REV. & FINAL REL. ERO 27381 GEP 10-18-88 RW
I	** REL PER ERO 25874 GEP 5-28-88 RW

REVISIONS ONLY ON CAD SYSTEM

TITLE: .125/(3.17) HOUSING, PLUG AND RECEPTACLE, I C K T.

MOLEX INCORPORATED U.S.A. SHEET NO. 1 OF 3 DATE 5 / 5/88

FILE NAME: S42179.IX1

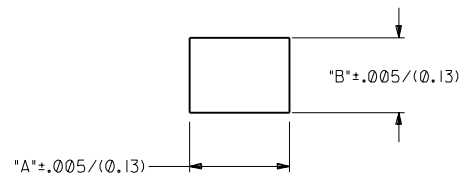
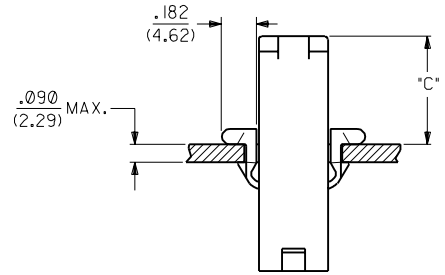
SCALE: 2 : 1

DRWG. NO. SD-42179-1

NO P.S.I

PLUG		
PART NO.	ENG. NO.	
03-12-2016	42179-IP1	
03-12-2015	42179-IP	
03-12-7014	42179-IPRD	
03-12-7015	42179-IPBU	<b>OBSOLETE</b>
03-12-7016	<b>42179-IPIRD</b>	
03-12-2071	42179-IPIBK	<b>OBSOLETE</b>
03-12-2072	42179-IPIGN	<b>OBSOLETE</b>
03-12-2073	42179-IPYIW	<b>OBSOLETE</b>
03-12-2074	42179-IPIBU	<b>OBSOLETE</b>
03-12-2075	42179-IPIGY	<b>OBSOLETE</b>

RECEPTACLE		
PART NO.	ENG. NO.	
03-12-1016	42179-IR1	
03-12-6014	42179-IRIRD	
03-12-6015	42179-IRIBU	<b>OBSOLETE</b>
03-12-2081	42179-IRIBK	<b>OBSOLETE</b>
03-12-2082	42179-IRIGN	<b>OBSOLETE</b>
03-12-2083	42179-IRYIW	<b>OBSOLETE</b>
03-12-2084	42179-IRIGY	<b>OBSOLETE</b>



HOUSING	DIM. "A"	DIM. "B"	DIM. "C"
PLUG	.521/(13.23)	.440/(11.18)	.55/(14.0)

**NOTES:**

- PART ACCEPTS A MAXIMUM .250/(6.35) INSULATION DIA.
- FOR USE WITH MOLEX .125/(3.17) DIAMETER SERIES TERMINALS EXCEPT THE I219/I220 SERIES.

**LEGEND:**

42179-1-\*\*\*-\*

CIRCUIT SIZE: \_\_\_\_\_

HOUSING TYPE: \_\_\_\_\_

P = PLUG

R = RECEPTACLE

MOUNTING EAR OPTION: \_\_\_\_\_

BLANK = WITH PREBENT EARS, PLUG ONLY

I = WITHOUT EARS

COLOR: \_\_\_\_\_

BLANK = 94V-2; TRANSLUCENT NATURAL COLOR

AM=AMBER BK=BLACK BU=BLUE

BN=BROWN GY=GRAY GN=GREEN

OR=ORANGE RD=RED YW=YELLOW

MATERIAL: \_\_\_\_\_

BLANK = NYLON 6/6, U.L. 94V-2

REV.	BY	DATE	DESCRIPTION
D2			SEE SHEET I
D1			SEE SHEET I
I			SEE SHEET I
H			SEE SHEET I
GI			SEE SHEET I
G			SEE SHEET I
F			SEE SHEET I
LTR.			REVISIONS

DIMENSIONS SHOWN (METRIC) INCH	
UNLESS OTHERWISE SPECIFIED TOLERANCES ANGULAR $\pm 10^\circ$	
3 PLACE $\pm .007$	---
2 PLACE $\pm .010$	$\pm 0.18$
1 PLACE ---	$\pm 0.25$
DRAFT WHERE APPLICABLE MUST REMAIN WITHIN DIMENSIONS	
DRWG. BY: CEP	CHK'D. BY: RW
APP'D. BY: RAS	SCALE: 2 : 1

REVISIONS		REVISIONS	
TITLE		REVISE ONLY ON CAD SYSTEM	
.125/(3.17) HOUSINGS, PLUG AND RECEPTACLE, I C K T.		SHEET NO. 3 DATE 5/6/88	
MOLEX INCORPORATED U.S.A.		PART NO. SD-42179-1*	
SEE CHART		DIV. CP	

42179