

Right Angle Panel DIP Switches

Features

Optimized Mechanical Features

- Designed for panel applications
Saves cost of right angle socket
- Multiple circuit configurations available
- Standard 2.54mm (.100") x 2.54mm (.100") centers, uses minimum PCB real estate
- Sealed version optional: assures contaminant-free switch operation after wave soldering and cleaning
- Available with low profile, standard, or extended actuators for SPST circuitry

Optimized Contact System

- Contact wiping action on make and break
- Integral terminal and contact locked into high temperature plastic base
- Electrostatic discharge shield rated to 22 KV

Materials

- Series 206RA, gold plated contacts for long-term contact corrosion resistance
- Series 208RA, tin plated contacts
- UL 94V-0 plastics
- RoHS compliant



Series 206RA – Premium Gold Plated Contacts
Series 208RA – Economical Tin Plated Contacts

Electrical and Mechanical Specifications

Switch Function

- SPST - 2 through 10 and 12 positions
- SPDT&DPST - 1 through 6 positions
- DPDT&4PST - 1 through 3 positions
- 3PST - 1 through 4 positions

Switch Contact Resistance

Switch Series	Initial, max.	End of life, max.
206RA	50 milliohms	100 milliohms
208RA	100 milliohms	500 milliohms

Insulation Resistance

1,000 megohms minimum between insulated terminals

Dielectric Strength

500 VAC for 1 minute between adjacent switches

Nonswitching Rating

100 mA or 50 VDC maximum

Switch Capacitance

5.0 pF maximum between adjacent closed switches

Operating Temperature

-55°C to +85°C

Actuation Life

- Series 206RA: 10,000 cycles switching 50 mA @ 24 VDC
- Series 208RA: 2,000 cycles switching 50 mA @ 24 VDC

Allowable Solder Time

Wave soldering up to 5 seconds at 260°C

Vibration

Per MIL-STD-202F, method 204D, condition B (.06" or 15 G's between 10 HZ to 2K HZ) with no contact inconsistencies greater than 1 microsecond

Shock

Per MIL-STD-202F, method 213B, condition A (50 G's) with no contact inconsistencies greater than 1 microsecond

Sealing

- Bottom epoxy seal optional
- Top tape seal optional

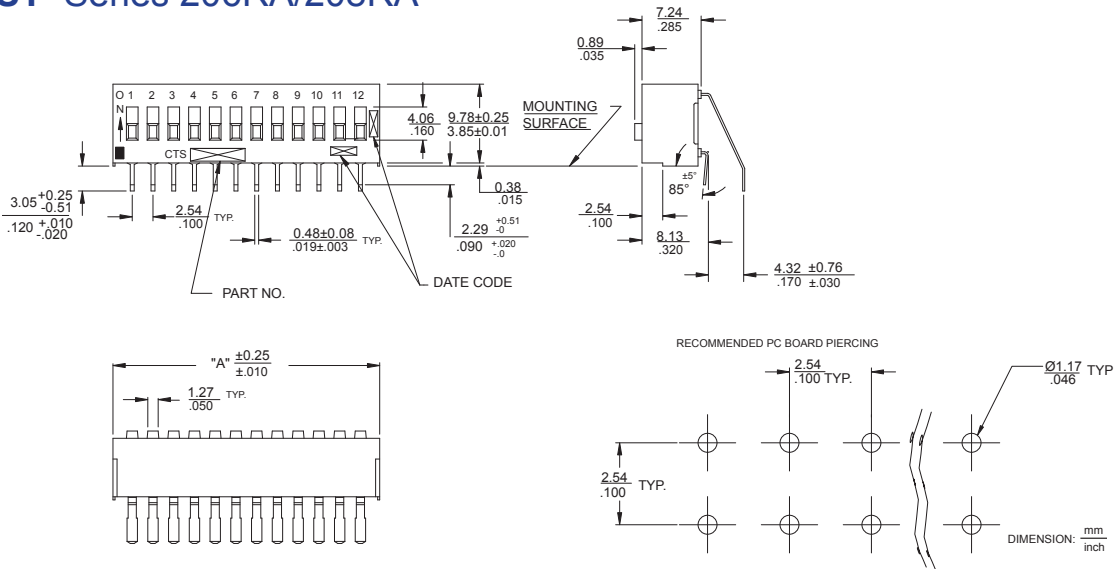
Marking

Special side or top marking available-consult CTS

Packaging

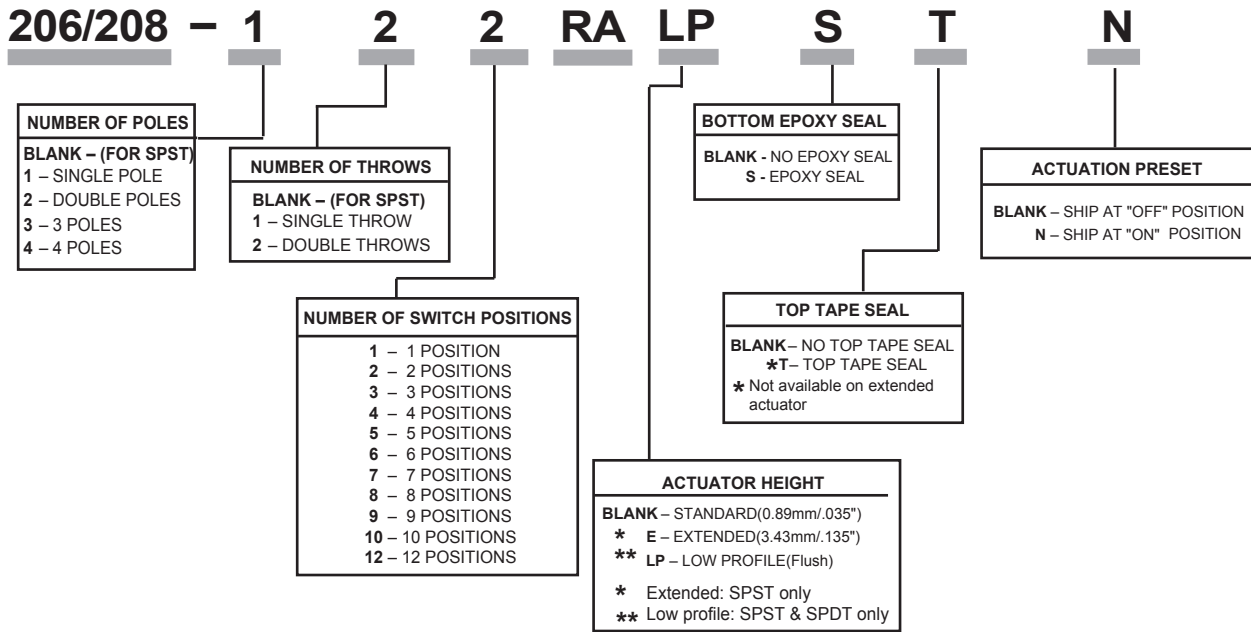
Standard : Anti-Static tube packaging

SPST Series 206RA/208RA



Please find panel drawing of 206/208 RA DIP switches with SPDT, DPST, DPDT, 3PST, or 4PST circuitry from 206/208 series data sheet

Ordering Information



Standard Part #		SPST Switches		SPDT&DPST Switches		3PST Switches		DPDT/ 4PST Switches		
Dimensions (mm/inch)	No of SW positions	SPST P/N	No of SW positions	SPDT P/N	DPST P/N	No of SW positions	3PST P/N	No of SW positions	DPDT P/N	4PST P/N
7.26 / .286	2	206/208- 2 RA	1	206/208-121RA	206/208-211RA	—	—	—	—	—
9.80 / .386	3	206/208- 3 RA	—	—	—	1	206/208-311RA	—	—	—
12.34 / .486	4	206/208- 4 RA	2	206/208-122RA	206/208-212RA	—	—	1	206/208-221RA	206/208-411RA
14.88 / .586	5	206/208- 5 RA	—	—	—	—	—	—	—	—
17.42 / .686	6	206/208- 6 RA	3	206/208-123RA	206/208-213RA	2	206/208-312RA	—	—	—
19.96 / .786	7	206/208- 7 RA	—	—	—	—	—	—	—	—
22.50 / .886	8	206/208- 8 RA	4	206/208-124RA	206/208-214RA	—	—	2	206/208-222RA	206/208-412RA
25.04 / .986	9	206/208- 9 RA	—	—	—	3	206/208-313RA	—	—	—
27.58 / 1.086	10	206/208-10 RA	5	206/208-125RA	206/208-215RA	—	—	—	—	—
32.66 / 1.286	12	206/208-12 RA	6	206/208-126RA	206/208-216RA	4	206/208-314RA	3	206/208-223RA	206/208-413RA