

PLEASE CHECK WWW.MOLEX.COM FOR LATEST PART INFORMATION

Part Number: **0355080700**
Status: **Active**
Description: 1.00mm (.039") Diameter Wire-to-Board Receptacle Housing - Single Row

Documents:

[3D Model](#) [Product Specification PS-35354-003 \(PDF\)](#)
[Drawing \(PDF\)](#) [RoHS Certificate of Compliance \(PDF\)](#)

General

Product Family Crimp Housings
 Series 35508
 Product Name N/A

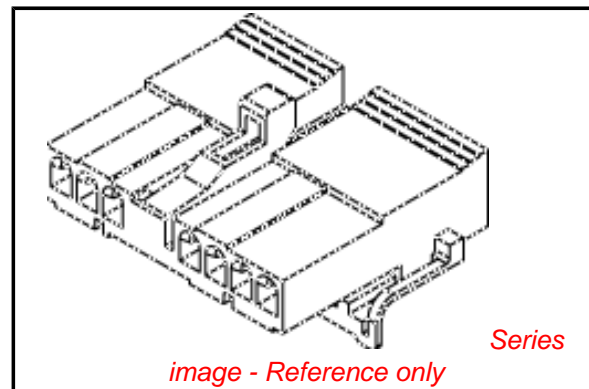
Physical

Circuits (maximum) 7
 Color - Resin Natural
 Gender Female
 Glow-Wire Compliant No
 Material - Resin Polyester
 Number of Rows 1
 Packaging Type Bag
 Panel Mount No
 Pitch - Mating Interface (in) 0.120 In
 Pitch - Mating Interface (mm) 3.00 mm
 Pitch - Term. Interface (in) 0.120 In
 Pitch - Term. Interface (mm) 3.00 mm
 Stackable No
 Temperature Range - Operating -40°C to +120°C

Material Info

Reference - Drawing Numbers

Product Specification PS-35354-003
 Sales Drawing SD-35508-0700



EU RoHS

ELV and RoHS Compliant
REACH SVHC
 Not Reviewed
Halogen-Free Status

China RoHS



Need more information on product environmental compliance?

Email productcompliance@molex.com
 For a multiple part number RoHS Certificate of Compliance, [click here](#)

Please visit the [Contact Us](#) section for any non-product compliance questions.

Search Parts in this Series

35508Series

Mates With

35354

Use With

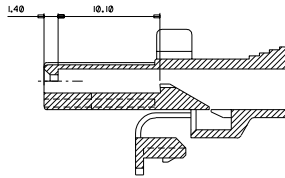
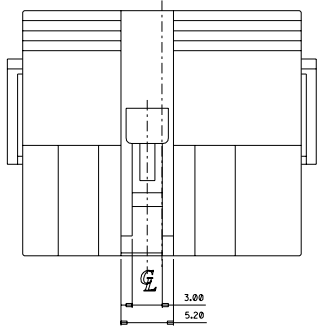
35403

ENG. NO. SD35508-0700

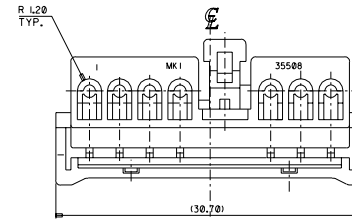
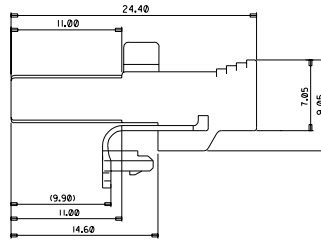
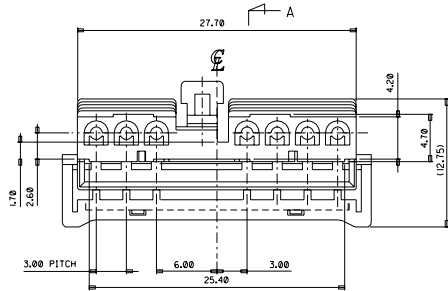
EDP NO.

SIMILAR ITEM

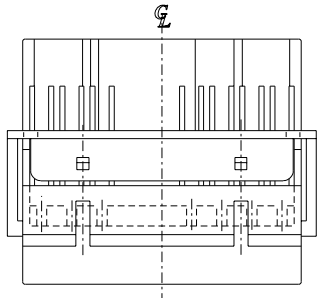
PROJECT NO.



SECTION A-A



A



- NOTE
- MATERIAL: PBT
 - APPLICABLE TERMINAL: 35403-1002

				MATERIAL	SEE NOTE	MOLEX-KOREA CO.,LTD.	
				GENERAL TOLERANCE			
				DIMENSION :	±0.30	DRAWN BY	CHK'D BY
				ANGLE :	°	RHO. '96.06.10	
B	REVISED		'97.12.5	DIMENSION CLASSIFICATION	▽ : CRITICAL ▼ : MAJOR	APP'D BY	SCALE 2/1
A	NEW RELEASE	96-132	'96.12.2	() : REFERENCE		TITLE :	SHEET
LTR	REVISION RECORD	ECN	DATE	ASS'Y PART		1.0 CIRCLOCK FEMALE HS'G 7P	1 OF 1
				DESCRIPTION	ENG. NO.	ENG. NO.	REV
				REVISE ONLY ON CAD SYSTEM		SD35508-0700	B