

PLEASE CHECK WWW.MOLEX.COM FOR LATEST PART INFORMATION

Part Number: [0438410002](#)
Status: **Active**
Overview: [modular_plugs_jacks](#)
Description: Modular Jack, Right Angle, Low Profile, SMT, 8/6, 2 Ports

Documents:

[3D Model](#) [Product Specification PS-43743-0001 \(PDF\)](#)
[Drawing \(PDF\)](#) [RoHS Certificate of Compliance \(PDF\)](#)

Agency Certification

CSA LR19980
 UL E107635

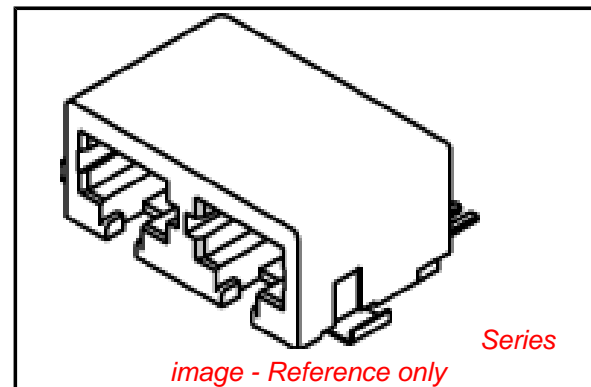
General

Product Family Modular Jacks/Plugs
 Series [43841](#)
 Comments Outboard Solder Tabs
 Component Type PCB Jack
 Magnetic No
 Overview [modular_plugs_jacks](#)
 Performance Category 3, 4
 Power over Ethernet (PoE) N/A
 Product Name RJ45

Physical

Boot Color N/A
 Color - Resin Black
 Durability (mating cycles max) 500
 Flammability 94V-0
 Inverted / Top Latch No
 Lightpipes/LEDs None
 Material - Metal Phosphor Bronze
 Material - Plating Mating Gold
 Material - Plating Termination Tin
 Material - Resin High Temperature Thermoplastic
 Orientation Right Angle (Side Entry)
 PCB Locator No
 PCB Retention Yes
 Packaging Type Embossed Tape on Reel
 Pitch - Mating Interface (in) 0.040 In
 Pitch - Mating Interface (mm) 1.02 mm
 Pitch - Term. Interface (in) 0.050 In
 Pitch - Term. Interface (mm) 1.27 mm
 Plating min: Mating (µin) 50
 Plating min: Mating (µm) 1.25
 Plating min: Termination (µin) 100
 Plating min: Termination (µm) 2.5
 Ports 2
 Positions / Loaded Contacts 8/6
 Surface Mount Compatible (SMC) Yes
 Temperature Range - Operating -40°C to +70°C
 Termination Interface: Style Surface Mount
 Waterproof / Dustproof No
 Wire/Cable Type N/A

Electrical



EU RoHS

**ELV and RoHS
 Compliant**
REACH SVHC
 Not Reviewed
**Halogen-Free
 Status**
Not Reviewed

China RoHS



**Need more information on product
 environmental compliance?**

Email productcompliance@molex.com
 For a multiple part number RoHS Certificate of
 Compliance, [click here](#)

Please visit the [Contact Us](#) section for any
 non-product compliance questions.

Search Parts in this Series

[43841Series](#)

Mates With

FCC 68 Plugs

Current - Maximum per Contact	1.5A
Shielded	No
Voltage - Maximum	150V AC (RMS)

Solder Process Data

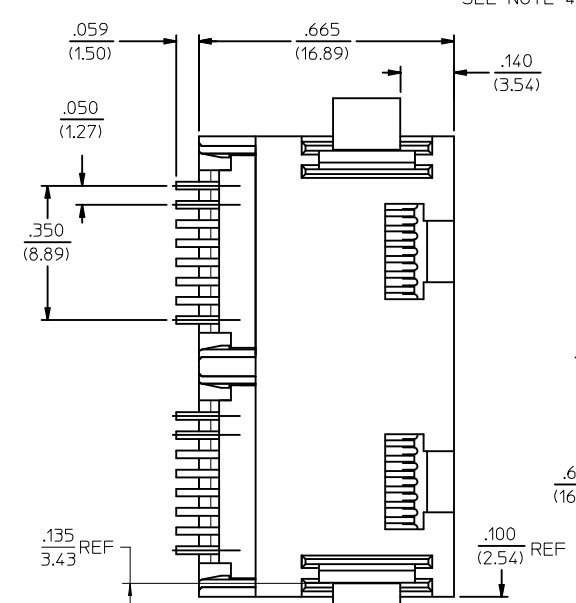
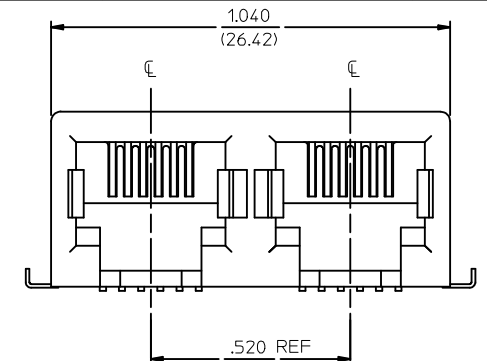
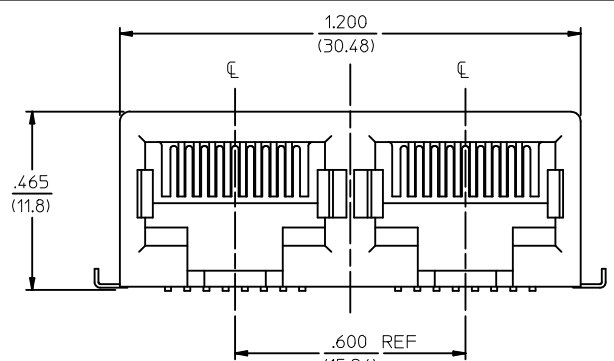
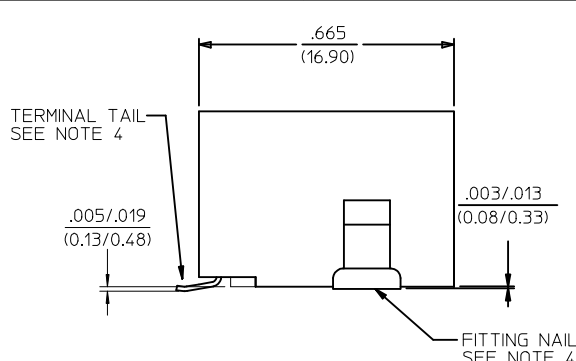
Lead-free Process Capability	Reflow Capable (SMT only)
Process Temperature max. C	235

Material Info**Reference - Drawing Numbers**

Packaging Specification	PK-70873-700*
Product Specification	PS-43743-0001
Sales Drawing	SD-43841-001

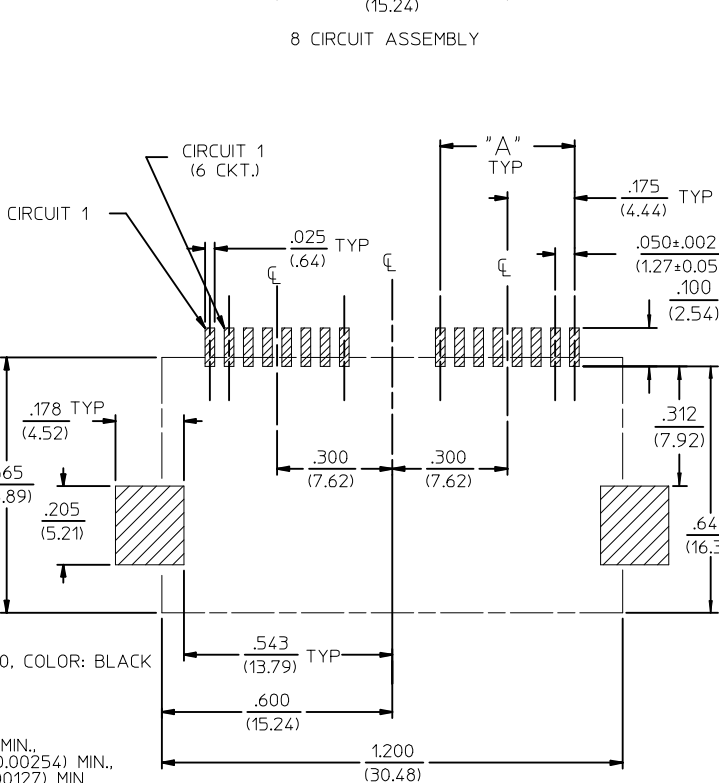
This document was generated on 06/07/2010

PLEASE CHECK WWW.MOLEX.COM FOR LATEST PART INFORMATION

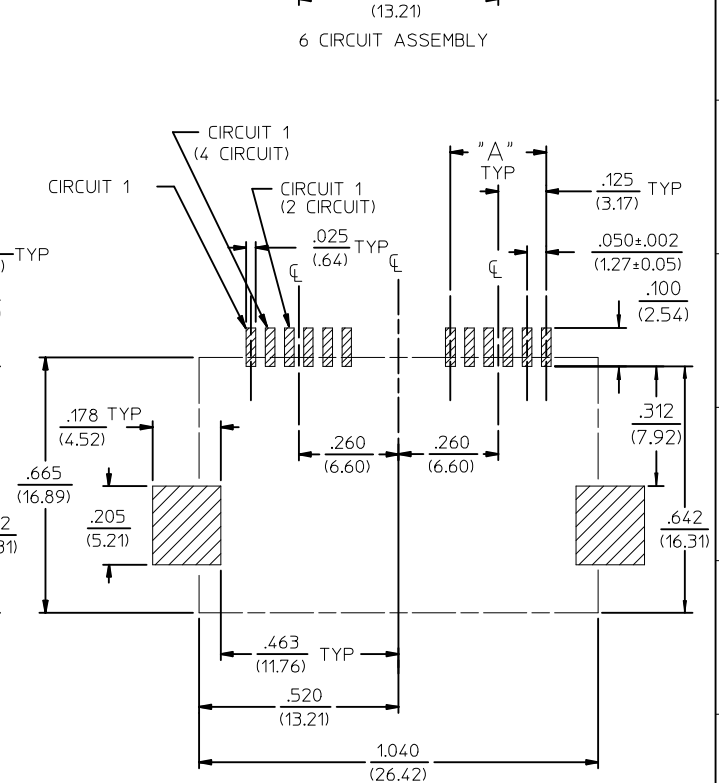


NOTES:
 1) MATERIAL:
 HOUSING & INSULATOR: NYLON(PA), GLASS FILLED, UL94V-0, COLOR: BLACK
 TERMINALS: PHOSPHOR BRONZE, .012/(0.30) THICK
 FITTING NAILS: BRASS, .010/(0.25) THICK
 2) FINISH:
 TERMINALS:
 A = SELECT GOLD IN CONTACT AREA: .000050/(0.00127) MIN.
 *SELECT MATTE TIN IN PC TAIL AREA: .000100/(0.00254) MIN.
 WITH OVERALL NICKEL UNDERPLATE: .000050/(0.00127) MIN.
 B = SELECT GOLD IN CONTACT AREA: .000030/(0.00076) MIN.
 *SELECT MATTE TIN IN PC TAIL AREA: .000100/(0.00254) MIN.
 WITH OVERALL NICKEL UNDERPLATE: .000050/(0.00127) MIN.
 C = SELECT GOLD IN CONTACT AREA: .000015/(0.00038) MIN.
 *SELECT MATTE TIN IN PC TAIL AREA: .000100/(0.00254) MIN.
 WITH OVERALL NICKEL UNDERPLATE: .000050/(0.00127) MIN.
 FITTING NAILS:
 *100 MICROINCHES MATTE TIN OVER 50 MICROINCHES NICKEL UNDERPLATE
 *THE PRIMARY SHIPPING CARTON WILL BE LABELED "COMPLIANT TO RoHS
 DIRECTIVE 2002/95/EC AND ELV ANNEX II OF DIRECTIVE 2000/53/EC".
 CARTONS WITHOUT THIS LABEL MAY CONTAIN PRODUCT WITH TIN-LEAD
 IN THE PC TAILS AND/OR FITTING NAILS.
 3) PRODUCT SPECIFICATION AND PROCESSING PARAMETERS: PS-43743-0001.
 4) PACKAGING SPECIFICATION:
 CONNECTOR ASSEMBLIES TO BE PACKAGED USING TAPE & REEL SYSTEM.
 5) COPLANARITY SPECIFICATION:
 WHEN AN ASSEMBLY IS PLACED UPON A LEVEL SURFACE, THE MAXIMUM
 GAP BETWEEN THE LEVEL SURFACE AND ALL TERMINAL TAILS AND
 BOTH FITTING NAILS IS .006/(0.15).
 6) FOR ASSEMBLIES HAVING VOIDED CIRCUITS, THE TAIL PORTION IS CUT
 AND REMOVED. THE MATING PORTION OF THE TERMINAL REMAINS INTACT.
 VOIDED CIRCUITS MUST BE THE SAME FOR BOTH PARTS.
 7) CONFORMS TO FCC REGULATION PART 68.5 FOR MODULAR JACKS.

1) MATERIAL:
 HOUSING & INSULATOR: NYLON(PA), GLASS FILLED, UL94V-0, COLOR: BLACK
 TERMINALS: PHOSPHOR BRONZE, .012/(0.30) THICK
 FITTING NAILS: BRASS, .010/(0.25) THICK
 2) FINISH:
 TERMINALS:
 A = SELECT GOLD IN CONTACT AREA: .000050/(0.00127) MIN.
 *SELECT MATTE TIN IN PC TAIL AREA: .000100/(0.00254) MIN.
 WITH OVERALL NICKEL UNDERPLATE: .000050/(0.00127) MIN.
 B = SELECT GOLD IN CONTACT AREA: .000030/(0.00076) MIN.
 *SELECT MATTE TIN IN PC TAIL AREA: .000100/(0.00254) MIN.
 WITH OVERALL NICKEL UNDERPLATE: .000050/(0.00127) MIN.
 C = SELECT GOLD IN CONTACT AREA: .000015/(0.00038) MIN.
 *SELECT MATTE TIN IN PC TAIL AREA: .000100/(0.00254) MIN.
 WITH OVERALL NICKEL UNDERPLATE: .000050/(0.00127) MIN.
 FITTING NAILS:
 *100 MICROINCHES MATTE TIN OVER 50 MICROINCHES NICKEL UNDERPLATE
 *THE PRIMARY SHIPPING CARTON WILL BE LABELED "COMPLIANT TO RoHS
 DIRECTIVE 2002/95/EC AND ELV ANNEX II OF DIRECTIVE 2000/53/EC".
 CARTONS WITHOUT THIS LABEL MAY CONTAIN PRODUCT WITH TIN-LEAD
 IN THE PC TAILS AND/OR FITTING NAILS.
 3) PRODUCT SPECIFICATION AND PROCESSING PARAMETERS: PS-43743-0001.
 4) PACKAGING SPECIFICATION:
 CONNECTOR ASSEMBLIES TO BE PACKAGED USING TAPE & REEL SYSTEM.
 5) COPLANARITY SPECIFICATION:
 WHEN AN ASSEMBLY IS PLACED UPON A LEVEL SURFACE, THE MAXIMUM
 GAP BETWEEN THE LEVEL SURFACE AND ALL TERMINAL TAILS AND
 BOTH FITTING NAILS IS .006/(0.15).
 6) FOR ASSEMBLIES HAVING VOIDED CIRCUITS, THE TAIL PORTION IS CUT
 AND REMOVED. THE MATING PORTION OF THE TERMINAL REMAINS INTACT.
 VOIDED CIRCUITS MUST BE THE SAME FOR BOTH PARTS.
 7) CONFORMS TO FCC REGULATION PART 68.5 FOR MODULAR JACKS.



PC BOARD LAYOUT FOR
 8 POSITION HOUSING
 (COMPONENT SIDE OF BOARD)



PC BOARD LAYOUT FOR
 6 POSITION HOUSING
 (COMPONENT SIDE OF BOARD)

2	F
1	G2
SHT	REV

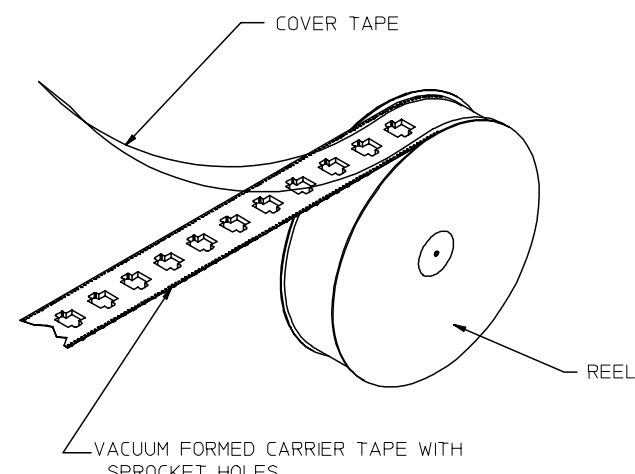
REVISED NOTES EC NO: WCP2009-12/44 DRAWN: JLOSTNER 2008/12/10 CHKD: JEBEL 2/00/08/12/10 APPR: FSBMTH 2/00/08/12/10	DESCRIPTION
G2	REV

QUALITY SYMBOLS ▽=0 ▽=0	GENERAL TOLERANCES (UNLESS SPECIFIED)
	mm INCH
	4 PLACES ± --- ± ---
	3 PLACES ± --- ± .010
	2 PLACES ± 0.25 ± .015
	1 PLACE ± .38 ± ---
	ANGULAR ± 1/2°
	DRAFT WHERE APPLICABLE MUST REMAIN WITHIN DIMENSIONS

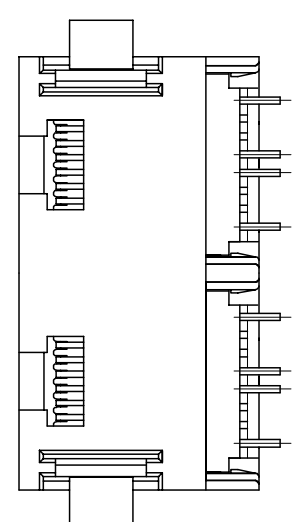
DIMENSION STYLE IN/MM	SCALE 1:1	DESIGN UNITS INCH	THIRD ANGLE PROJECTION
DRAWN BY PEARSON	DATE 01/07/97	TITLE 4, 6 & 8 CIRCUIT DUAL PORT SMT MODJACK	
CHECKED BY MUELLER	DATE 01/07/97		
APPROVED BY EDGLEY	DATE 01/07/97		
MATERIAL NO.	DOCUMENT NO.	SHEET NO. 1 OF 2	

MOLEX INCORPORATED	
SEE SHEET 2	
SD-43841-001	
THIS DRAWING CONTAINS INFORMATION THAT IS PROPRIETARY TO MOLEX INCORPORATED AND SHOULD NOT BE USED WITHOUT WRITTEN PERMISSION	

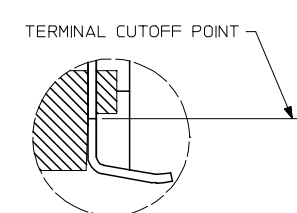
	13	12	11	10	9	8	7	6	5	4	3	2	43841
	ASSEMBLY ITEM NO.	CONNECTOR SIZE	CIRCUIT SIZE	TERMINAL PLATING	TAPE & REEL PACKAGING NO.	VOIDED CIRCUITS							
J	43841-0001	8	4	A	PK-70873-7004	NA							
	43841-0002	8	6	A	PK-70873-7004	↑ ↓							
	43841-0003	8	8	A	PK-70873-7004								
I	43841-0004	6	4	A	PK-70873-7003								
	43841-0005	6	6	A	PK-70873-7003								
	43841-0006	8	4	B	PK-70873-7004								
H	43841-0007	8	6	B	PK-70873-7004								
	43841-0008	8	8	B	PK-70873-7004								
	43841-0009	6	4	B	PK-70873-7003								
	43841-0010	6	6	B	PK-70873-7003								
G	43841-0011	8	4	C	PK-70873-7004								
	43841-0012	8	6	C	PK-70873-7004								
	43841-0013	8	8	C	PK-70873-7004								
	43841-0014	6	4	C	PK-70873-7003								
F	43841-0015	6	6	C	PK-70873-7003								
	43841-0016	6	2	A	PK-70873-7003								
	43841-0017	6	2	B	PK-70873-7003								
	43841-0018	6	2	C	PK-70873-7003		NA						



TAPE AND REEL PACKAGING



TYPICAL VIEW SHOWING VOIDED CIRCUIT (CIRCUITS 2,3,6,7 SHOWN VOIDED)



VIEW SHOWING TYPICAL TERMINAL CUTOFF OF TAIL (SEE NOTE 5) FOR VOIDED CIRCUITS.

HOUSING SIZE	CIRCUIT SIZE	DIM. A
6	6	.250 (6.35)
6	4	.150 (3.81)
6	2	.050 (1.27)
8	8	.350 (8.89)
8	6	.250 (6.35)
8	4	.150 (3.81)

SEE SHEET ONE EC NO: UCP2004-0798 TDRW:LSCHMIDT 2004/01/05 CHKD:LSCHMIDT 2004/01/05 APPR:FSMITH 2004/01/08	QUALITY SYMBOLS	GENERAL TOLERANCES (UNLESS SPECIFIED)	SCALE 4:1	DESIGN UNITS INCH	THIRD ANGLE PROJECTION	REVISE ON CAD ONLY
	▽ = 0 ▽ = 0	4 PLACES ± .010 3 PLACES ± .015 2 PLACES ± 0.25 ± .015 1 PLACE ± 0.38 ± .015 ANGULAR ± 1/2°	DIMENSION STYLE IN/MM		TITLE	
			DRAWN BY PEARSON DATE 01/07/98		4, 6 & 8 CIRCUIT DUAL PORT SMT MODJACK	
			CHECKED BY PEARSON DATE 01/07/98		MOLEX INCORPORATED	
	DRAFT WHERE APPLICABLE MUST REMAIN WITHIN DIMENSIONS	APPROVED BY EDGLEY DATE 01/07/98	MATERIAL NO. SEE CHART	DOCUMENT NO. SD-43841-001	SHEET NO. 2 OF 2	
THIS DRAWING CONTAINS INFORMATION THAT IS PROPRIETARY TO MOLEX INCORPORATED AND SHOULD NOT BE USED WITHOUT WRITTEN PERMISSION						