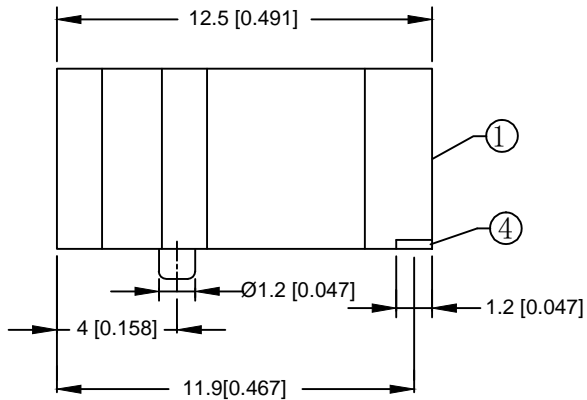
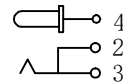


**NOTES**

- 注释
- 1.VOLTAGE RATING:30 DC  
额定电压: 30V DC
  - 2.CONTACT CURRENT RATING: 0.5A  
触点额定电流: 0.5 A
  - 3.CONTACT RESISTANCE:30mΩ MIN  
接触电阻: 最小30mΩ
  - 4.INSULATION RESISTANCE:100MΩ MAX,  
绝缘电阻: 最大100MΩ ,
  5. DIELECTRIC WITHSTANDING:36V AC MIN.  
耐介质电压: 500V AC MIN.
  - 6.INSTRING AND EXTRACTION FORCE 3-15N  
插拔力和拔出力: 3-15N
  - 7.TEMPERATURE RANGE:-30 °C-70 °C  
工作温度: -30 °C-70 °C
  - LIFE TEST :5000次 CYCIES  
寿命;5000次循环



**SCHMATIC**



| DECRIPTON   | MATERIAL | PLATING    |
|-------------|----------|------------|
| PIN         | BRONZE   | Ag-Plating |
| SPRING      | BRONZE   | Ag-Plating |
| HURVE PIECE | BRASS    | Ag-Plating |
| HOUSING     | PBT/PA66 |            |

|   |             |      |         |          | ANGLAR                 | ±5°     | DATE                                 | SCALE: N/A  | MODEL TYPE:          |
|---|-------------|------|---------|----------|------------------------|---------|--------------------------------------|-------------|----------------------|
| ΔX  |             |      |         |          | X.X                    | ±0.2mm  | DWN                                  | VIEW:       | DC POWER JACK        |
| ΔX  |             |      |         |          | X.XX                   | ±0.1mm  | CHKD                                 | UNIT: mm/in | PART NO.:            |
| ΔX  |             |      |         |          | X.XXX                  | ±0.05mm | APPD                                 | SIZE: A4    | DWG NO.: DC-049A-SMT |
| MARK  | DESCRIPTION | DATE | REVISED | APPROVED | UNSPECIFIED TOLERANCES |         | XKB INDUSTRIAL PRECISION CO.,LIMITED |             |                      |
| REVISIONS                                     |             |      |         |          |                        |         | WEIGHT                               | SHEET       | REVISION             |
| www.xk-dg.cn www.helloxkb.com www.helloxkb.cn |             |      |         |          |                        |         |                                      | 1/1         | A0                   |