

IEC Appliance Inlet C16A, Snap-in Mounting, Front Side, Solder or Quick-connect Terminal



6120-5



See below:

**Approvals and Compliances**

**Description**

- Panel mount :  
 Snap-in version from front side
- 1 Function
- Appliance Inlet , Pin temperature 155 °C , Protection class I
- Solder terminals or quick connect terminals

**Other versions on request**

- Other panel thickness
- Quick connect terminals 4.8 x 0.8 mm
- Types for enhanced glow wire test requirements acc. IEC 60695-2-12 and -13 for the use in unattended household equipment acc. IEC 60335-1

**Weblinks**

[pdf datasheet](#), [html-datasheet](#), [General Product Information](#), [Distributor-Stock-Check](#), [Accessories](#), [Detailed request for product](#)

**Technical Data**

|                                 |   |
|---------------------------------|---|
| Ratings IEC                     | 10A / 250VAC; 50Hz  |
| Ratings UL/CSA                  | 15A / 250VAC; 60Hz  |
| Dielectric Strength             | > 2kVAC between L-N<br>> 2kVAC between L/N-PE<br>(1 min/50Hz)     |
| Allowable Operation Temperature | -25 °C to 155 °C  |
| IP-Protection                   | from front side IP 30 acc. to IEC 60529                           |
| Insulation cover                | Suitable for appliances with protection class I acc. to IEC 61140 |
| Terminal                        | Solder terminals or quick connect terminals                       |
| Panel Thickness S               | Snap-in: 1.5/2.5/3 mm   |
| Material: Housing               | Thermoplastic, black, UL 94V-0                                    |

|                         |  |
|-------------------------|--|
| appliance inlet/-outlet | C16A acc. to IEC 60320-1,<br>UL 60320-1, CSA C22.2 no. 60320-1<br>(for very hot conditions) pin-temperature<br>155 °C, 10A, Protection Class I |
|-------------------------|--|

**Approvals and Compliances**

Detailed information on product approvals, code requirements, usage instructions and detailed test conditions can be looked up in [Details about Approvals](#)

**Approvals**




The approval mark is used by the testing authorities to certify compliance with the safety requirements placed on electronic products.

Approval Reference Type: 6120

| Approval Logo | Certificates  | Certification Body | Description                              |
|---------------|---------------|--------------------|--|
|               | VDE Approvals | VDE                | Certificate Number: 40015595             |
|               | UL Approvals  | UL                 | UL File Number: E96454                   |
|               | CQC Approvals | CQC                | CCC Certificate Number: 2014010204726618 |

**Product standards**

Product standards that are referenced

| Organization   | Design                | Standard              | Description   |
|--|-----------------------|-----------------------|---|
|  | Designed according to | IEC 60320-1           | Appliance couplers for household and similar general purposes         |
|  | Designed according to | UL 60320-1            | Standard for Attachment Plugs and Receptacles                         |
|  | Designed according to | CSA C22.2 no. 60320-1 | General Use Receptacles, Attachment Plugs, and Similar Wiring Devices |





### Application standards

Application standards where the product can be used

| Organization   | Design                         | Standard     | Description   |
|--|--------------------------------|--------------|---|
|  | Designed for applications acc. | IEC/UL 60950 | IEC 60950-1 includes the basic requirements for the safety of information technology equipment. |

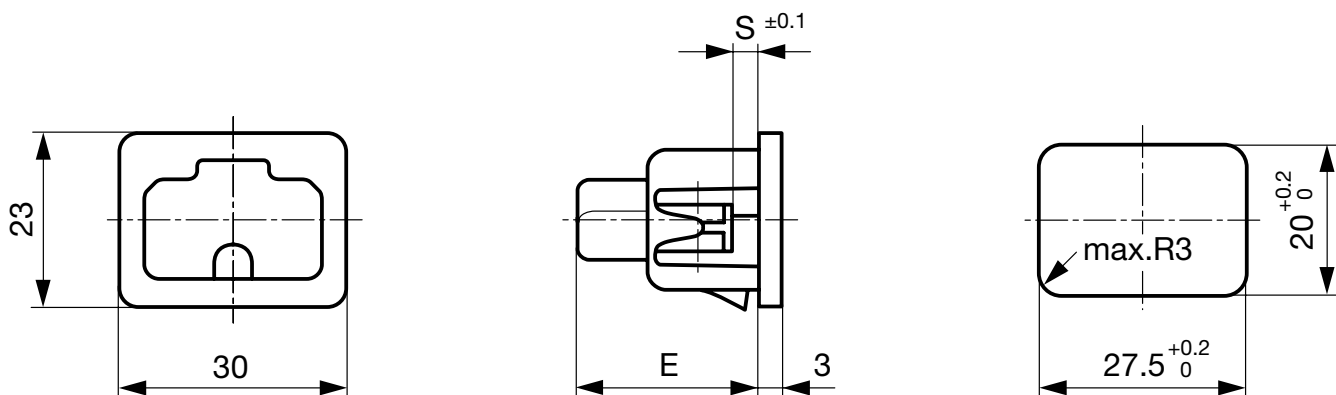
### Compliances

The product complies with following Guide Lines

| Identification   | Details                      | Initiator   | Description   |
|--|------------------------------|-------------|---|
|  | CE declaration of conformity | SCHURTER AG | The CE marking declares that the product complies with the applicable requirements laid down in the harmonisation of Community legislation on its affixing in accordance with EU Regulation 765/2008. |
|  | RoHS                         | SCHURTER AG | EU Directive RoHS 2011/65/EU  |
|  | China RoHS                   | SCHURTER AG | The law SJ / T 11363-2006 (China RoHS) has been in force since 1 March 2007. It is similar to the EU directive RoHS.  |
|  | REACH                        | SCHURTER AG | On 1 June 2007, Regulation (EC) No 1907/2006 on the Registration, Evaluation, Authorization and Restriction of Chemicals 1 (abbreviated as "REACH") entered into force.                               |

### Dimensions [mm]

6120-5



E: Solder terminals: 22.5 mm  
E: Quick connect terminals: 25.5 mm  
S: 1.5, 2.5, 3.0 mm

### All Variants

| Type   | Panel mounting | Panel Thickness s [mm] | Terminal                             | Order Number |
|--------|----------------|------------------------|--------------------------------------|--------------|
| 6120-5 | Snap-in        | 1.5                    | Quick connect terminals 6.3 x 0.8 mm | 6120.5315    |
| 6120-5 | Snap-in        | 1.5                    | Solder terminals 3.8 x 0.8 mm        | 6120.5115    |
| 6120-5 | Snap-in        | 2.5                    | Quick connect terminals 6.3 x 0.8 mm | 6120.5325    |
| 6120-5 | Snap-in        | 2.5                    | Solder terminals 3.8 x 0.8 mm        | 6120.5125    |
| 6120-5 | Snap-in        | 3                      | Quick connect terminals 6.3 x 0.8 mm | 6120.5330    |
| 6120-5 | Snap-in        | 3                      | Solder terminals 3.8 x 0.8 mm        | 6120.5130    |

Availability for all products can be searched real-time: <https://www.schurter.com/en/Stock-Check/Stock-Check-SCHURTER>

Articles for enhanced glow wire test requirements acc. IEC 60695-2-12 and -13 can be ordered with ending ".15" (xxxx.xxxx.15). They are suitable for the use in unattended household equipment acc. IEC 60335-1.

**Packaging unit** 50 Pcs

## Mating Outlets/Connectors

### Category / Description



[Connector Overview complete](#)

IEC Connector C15A for very hot conditions 155°C, Rewireable, Straight

4771

IEC Connector C15A, Rewireable, Angled

4772

[Connector further types to 6120-5](#)