



2.4GHz 10.5dBi Directional Dual-Polarization Patch Antenna Kit

WAN-7100



H/W Version: 1

The LevelOne WAN-7100 10.5dBi directional dual polarization antenna kit is designed for indoor / outdoor wireless connections. With array pattern located at +45° and -45° polarization, you can improve signal strength in crowded areas where lot of interferences occur.

This antenna kit comes with antenna, 3m UL-168 jump cables and has been tested for interoperating with LevelOne 2T2R MIMO access points. It provides Indoor/Outdoor building-to-building bridges and can be used with other wireless products, which are equipped with reverse SMA male connector and detachable antennas.



1. SMA jack Connector

Key Features

- Wi-Fi IEEE 11b/g/n band 2.4GHz global compatibility
- 2T2R MIMO high-throughput and diversity with 10.5dBi high-gain performance
- Dual-Polarization to avoid interference
- Easy to install on the wall surface
- Wideband frequency performance enables future growth and increases flexibility
- Includes UL-168 3m cables for wireless device with SMA connectors

Works Well With



WAP-6011
300Mbps *N_Max* Wireless Access Point



WAP-6012
300Mbps *N_Max* Wireless Gigabit PoE Access Point

Technical Specification

Electrical Specification

Frequency range

2.3~2.7GHz

Gain

10.5dBi

VSWR

2.0:1 (Max.)

Polarization
Linear, $\pm 45^\circ$
Horizontal HPBW
 $63^\circ \sim 67^\circ$
Vertical HPBW
 $22^\circ \sim 37^\circ$
Sidelobes level

-8dB

Isolation

20dB

Input impedance

50 Ohm

Cable

3m Jump Cable x 2 (SMA plug to RPSMA plug)

Connector

SMA jack x 2

Power handling

10W (cw)

Lightening protection

N/A

Environmental & Mechanical Characteristics

Survival wind speed

N/A

Temperature
 $-10^\circ\text{C} \sim +55^\circ\text{C}$
Humidity
95% @ $+55^\circ\text{C}$
Housing color

White

Weight

200g

Dimensions (L x W x H)

330 x 93 x 21.4mm

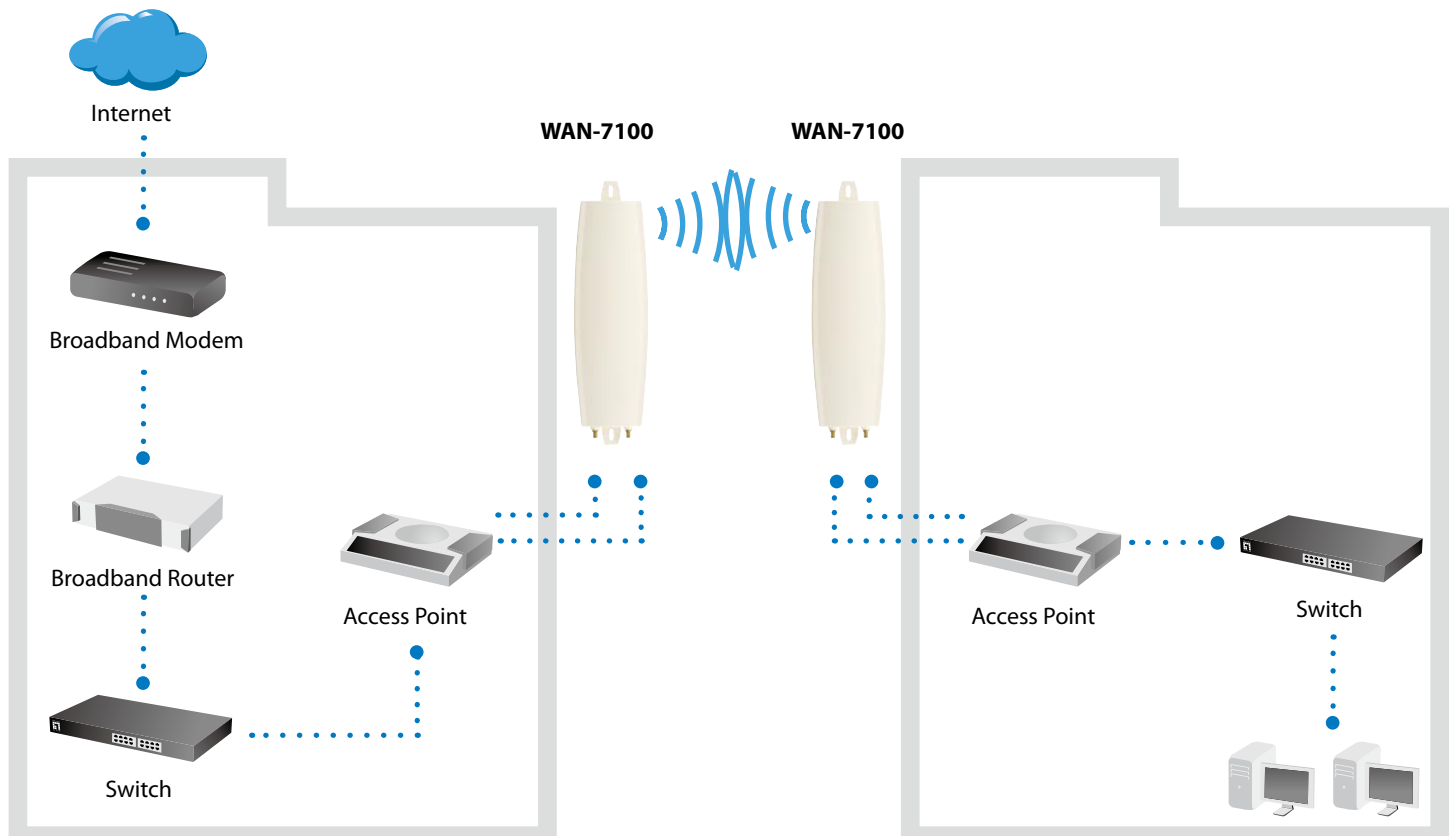
Waterproof

N/A

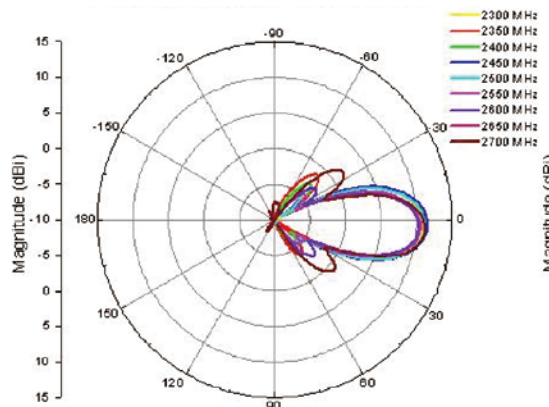
Mount kit

Wall mount & Window Mount

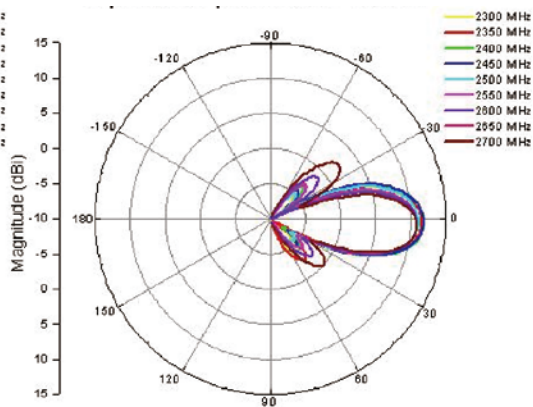
Product Diagram



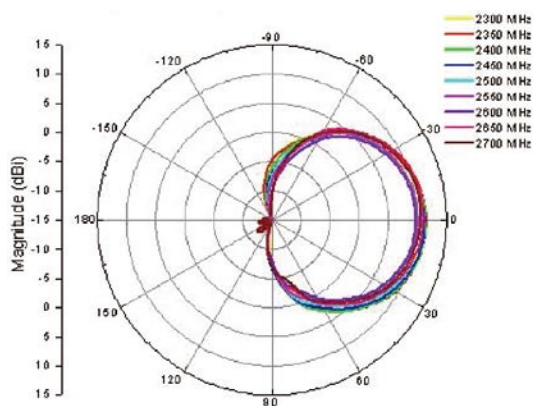
Radiation Pattern



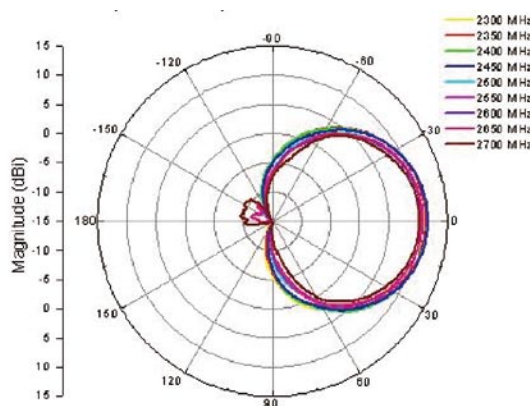
V-Plane Co-polarization Pattern



V-Plane Co-polarization Pattern



H-Plane Co-polarization Pattern



H-Plane Co-polarization Pattern

Order Information

Package Contents

WAN-7100: 2.4GHz 10.5dBi Directional Dual-Polarization Patch Antenna Kit

WAN-7100

QIG x 1

3m Jump Cable x 2 (SMA plug to RPSMA plug)

Standard mounting kit