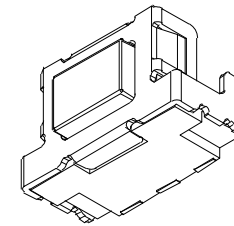
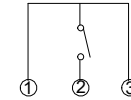
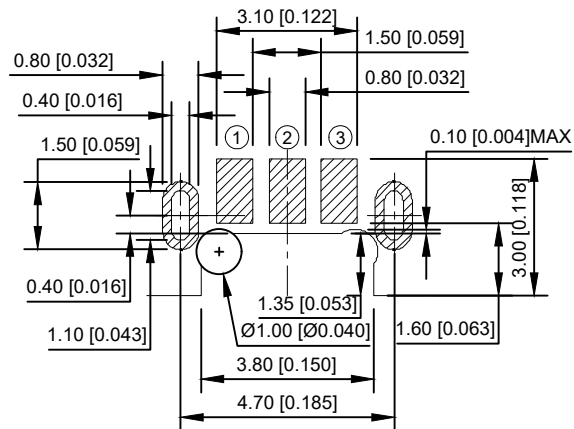
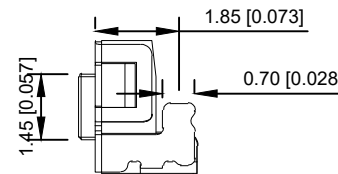
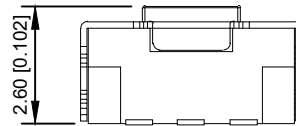


CIRCUIT DIAGRAM



P.C.B MOUNTING PATTERN DIMENSION  
the following soldering are recommended  
for reflow soldering



### Electrical 电气

MAXIMUM VOLTAGE 最大电压: 12 VDC

MAXIMUM CURRENT DC 最大电流: 50 mA

DIELECTRIC STRENGTH 介电强度: 100 VA C (1mn)

CONTACT RESISTANCE 接触电阻: ≤ 100 mΩ

INSULATION RESISTANCE 绝缘电阻: ≥ 100 MΩ

BOUNCE TIME 弹跳时间: ≤ 10 ms

### Environmental 环境

OPERATING TEMPERATURE 工作温度: -40°C to 85°C

|     |      |          |             |       |
|-----|------|----------|-------------|-------|
| A4  |      |          |             |       |
| A3  |      |          |             |       |
| A2  |      |          |             |       |
| A1  |      |          |             |       |
| REV | DATE | REVISION | DESCRIPTION | ISSUE |



COMMON TOLERANCE

|         |        |
|---------|--------|
| X.XX    | ± 0.10 |
| X.X     | ± 0.15 |
| X       | ± 0.25 |
| ANGULAR | —      |

|  |        |            |      |                      |
|--|--------|------------|------|----------------------|
| UNIT   | MM     | PROJECTED  |      | PRODUCT NAME:        |
| DRAWN BY   | FUYUAN | CHECKED BY | COCO | MODEL NO: TP-0210-1  |
| DATE   | 2019   | APPROVAL B | ALEN | Https: www.rocpcu.tw |
| <b>ROCPCU TECHNOLOGY CO.,LTD</b>   |        |            |      |                      |
| <small>Copies are issued in strict confidence and shall not be reproduced or copied, or used as the basic of manufacture or sale of apparatus without permission</small> |        |            |      |                      |