



Part Number	Package	Application	Last Modified
861-RF942.5M-H	2.5 x 2.0 SMD	EGSM	Mar. 2, 2007

TYPE :
EGSM, Balanced RF SAW Filter

PART NUMBER :
861-RF942.5M-H

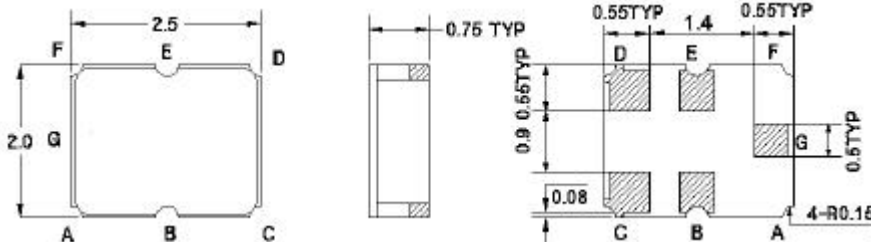


OPERATING CONDITIONS / ELECTRICAL CHARACTERISTICS

PARAMETERS	Condition	Minimum	Typical	Maximum	Units
Center Frequency (Fo)	-	-	942.5	-	MHz
Maximum Insertion Loss	925.0~ 960.0 MHz	-	2.8	4.0	dB
Attenuation:	D.C.~ 880.0 MHz	50	52	-	dB
	880.0~905.0 MHz	30	44	-	
	905.0~ 915.0MHz	10	27	-	
	980.0~ 1050.0 MHz	21	27	-	
	1050~ 6000.0 MHz	50	54	-	
Symmetry in Band	925.0~ 960.0 MHz-	-			
Output Amplitude Balance (I S31/S21 I)	-	-1.3	0	1.2	dB
Output Phase Balance ($\phi(S31)-\phi(S21)+180^\circ$)	-	-10	0	10	degree
Source Impedance (single ended)*	-	-	50	-	ohm
Load Impedance (single ended)*	-	-	150/72	-	ohm/nh
Input/Output VSWR	925.0~ 960.0 MHz	-	1.8	2.5	-
Amplitude Ripple	925.0~ 960.0 MHz	-	1.0	2.4	dBp-p
Maximum DC Voltage	-	-	-	0	V
Maximum Input Power	-	-	-	15	dBm
Operating Temperature	-	-30	-	+85	°C

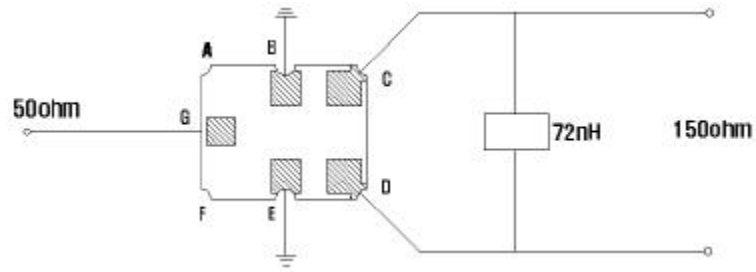
*With Matching Network

PACKAGE OUTLINE (mm)

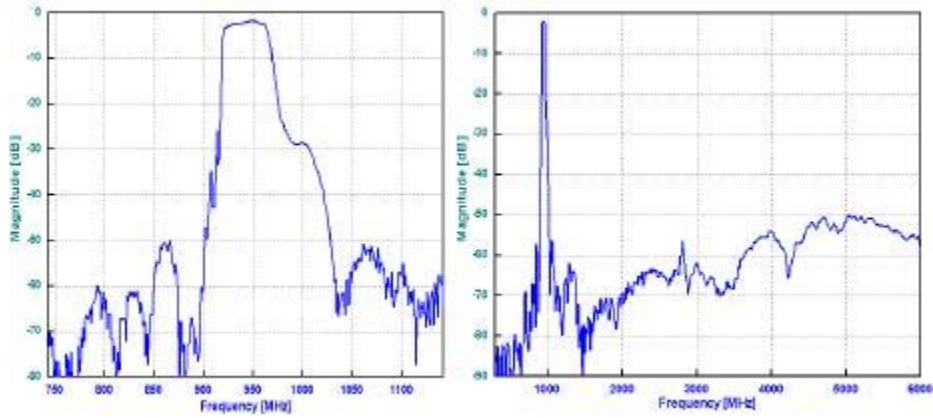


PIN LAYOUT	
A	-
B	Ground
C	Out
D	Out
E	Ground
F	-
G	In

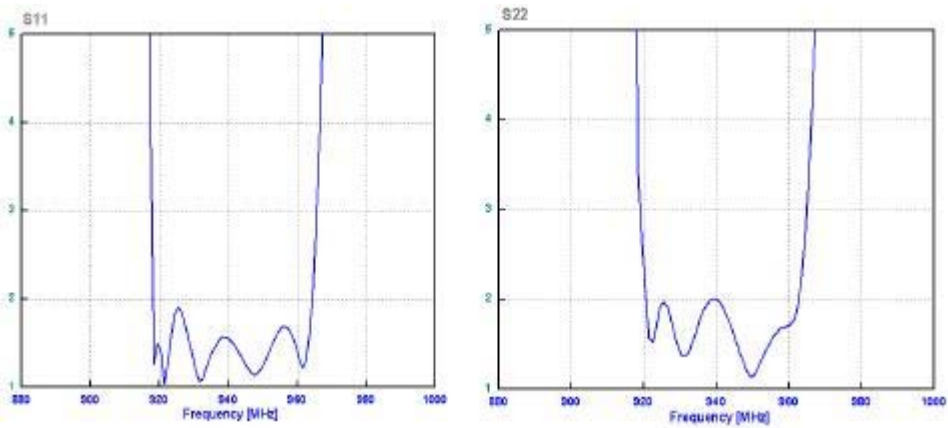
TEST FIXTURE



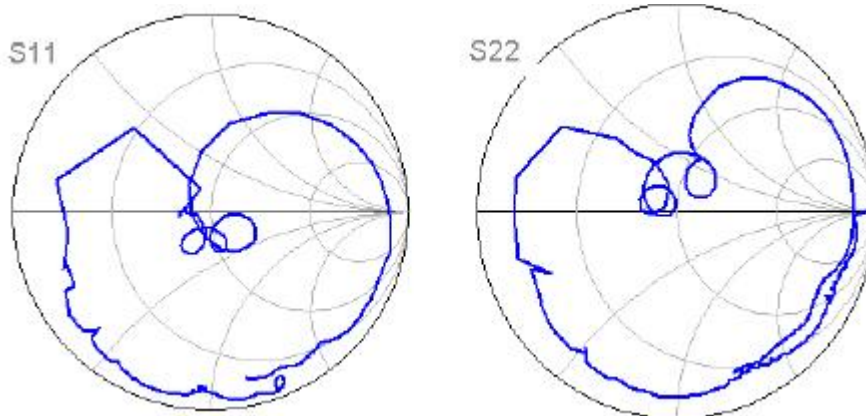
FREQUENCY RESPONSE



VSWR



SMITH CHART



[Crystal Oscillators](#) | [Quartz Crystal](#) | [TCXO](#) | [VCXO](#) | [IF SAW Filter](#) | [RF SAW Filter](#) | [Ceramic Resonator](#)
[Crystal Filter](#) | [Ceramic Filter](#) | [SAW Filter / SAW Devices](#) | [Site Map](#)