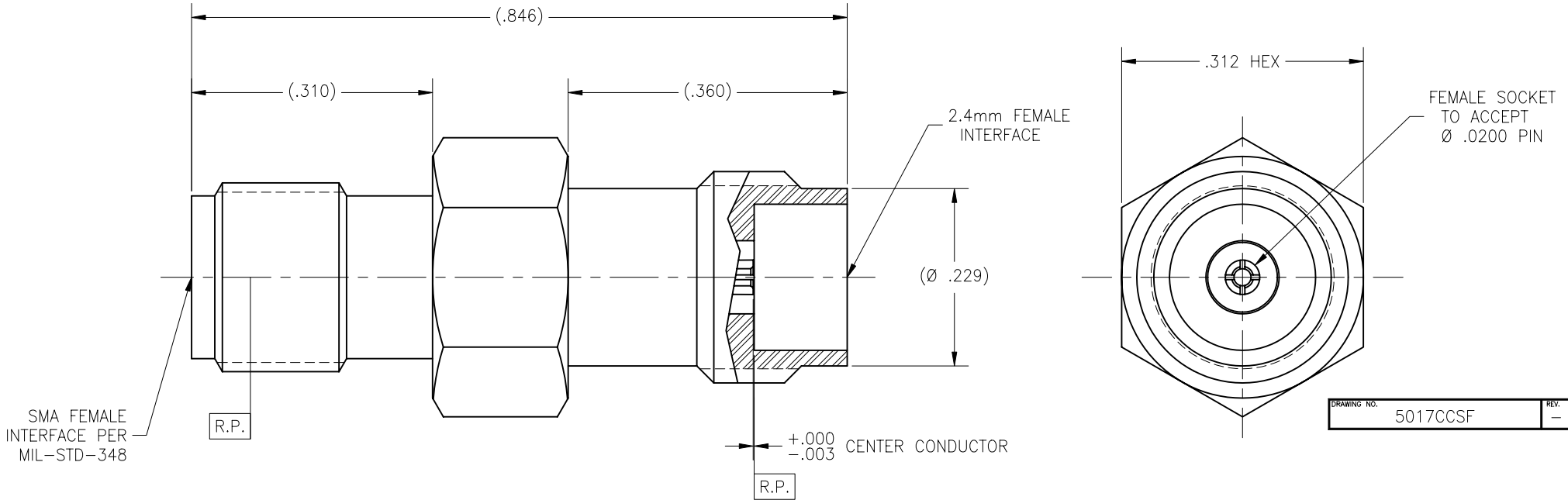


REVISIONS				
ZONE	REV	DESCRIPTION	DATE	BY
—	—	—	—	—



DRAWING NO.	5017CCSF	REV.	—
-------------	----------	------	---

NOTE(S):

- MATERIAL(S):
 - BODY: 303 SST PER ASTM A-582.
 - CENTER CONDUCTOR: BeCu ALLOY PER ASTM B-196.
 - INSULATOR: PTFE TEFLON PER ASTM D-1710.
- FINISH(ES):
 - BODY: PASSIVATED PER ASTM A-976.
 - CENTER CONDUCTOR: GOLD PLATE PER ASTM B-488 OVER NICKEL PLATE PER AMS-QQ-N-290.
 - INSULATOR: NONE
- ELECTRICAL: VSWR 1.21:1 MAX DC-24.0 GHz

NOTICE
THIS DRAWING EMBODIES A CONFIDENTIAL PROPRIETARY DESIGN ORIGINATED BY TENSOLITE COMPANY AND ALL DESIGN, MANUFACTURING REPRODUCTION, USE AND SALE RIGHTS REGARDING THE SAME ARE EXPRESSLY RESERVED. IT IS SUBMITTED UNDER A CONFIDENTIAL RELATIONSHIP FOR A SPECIFIED PURPOSE AND THE RECIPIENT AGREES BY ACCEPTING THIS DRAWING NOT TO SUPPLY OR DISCLOSE ANY INFORMATION REGARDING IT TO ANY UNAUTHORIZED PERSON OR TO INCORPORATE IN OTHER PROJECTS ANY SPECIAL FEATURES PECULIAR TO THIS DESIGN. ALL PATENT RIGHTS HERETO ARE EXPRESSLY RESERVED BY TENSOLITE COMPANY, LONG BEACH, CALIFORNIA 90815

TOLERANCES AND NOTES EXCEPT AS NOTED
DIMENSIONS ARE IN INCHES.
LINEAR .XX ±.015
.XXX ±.005 ANGULAR ± 1/2°
FRACTION ± 1/32
1. MACHINE FINISH: $\sqrt{}$ RMS
2. BREAK ALL SHARP EDGES .003 MAX.
3. MACHINED FILLETS .005 MAX.
4. MACHINED SURFACES SQUARE TO RESPECTIVE AXIS WITHIN .005 INCHES PER INCH.
5. MACHINED DIAMETERS CONCENTRIC WITHIN .002 T.I.R.
6. DIMENSIONS TO BE MET BEFORE PLATING.
7. CHAMFER ALL THREADS 45°.
8. THREADS PER H-28
9. REMOVE FRAYED EDGES ON TEFLON.
10. REMOVE ALL BURRS.

SEE NOTES		—	SEE NOTES	—
MATERIAL		SIZE	SPECIFICATION	PROCUREMENT
NEXT ASSY		Tensolite RF/Microwave Connectors Long Beach, California 90815		
APPROVAL INITIALS	DATE	TITLE		
DRAWN BY	ATV	10.23.01	SMA FEMALE TO 2.4mm FEMALE ADAPTER	
CHECKED			SCALE	SUB-DIRECTORY/FILENAME
QUALITY			10/1	OL
ENGINEERING	ATV	10.23.01	SIZE	CAGE CODE
			C	30990
			DRAWING NO.	5017CCSF
				REV. —