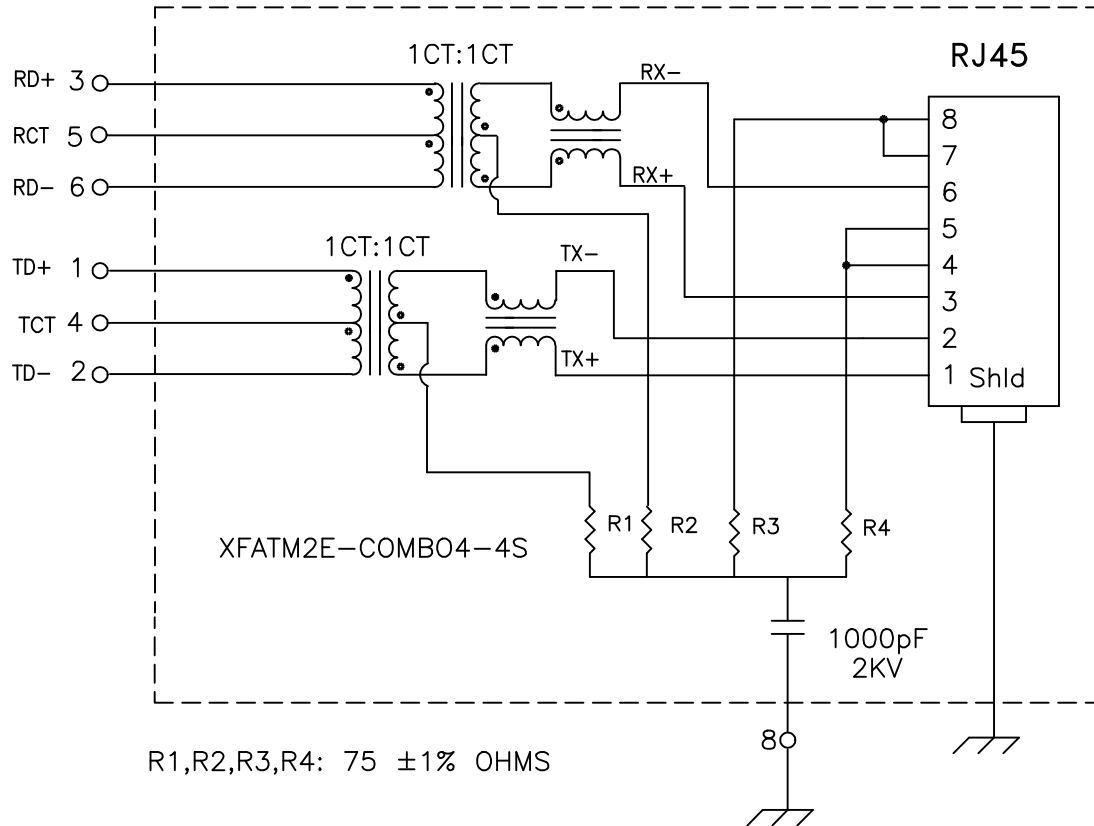


Schematic:

(One of Four)



Electrical Specifications: @25°C

Isolation Voltage: 1500 Vrms (INPUT to OUTPUT)
 UTP SIDE OCL: 350uH Min @100KHz 100mV 8mADC
 Rise Time (10-90%): 2.5ns Typical
 Insertion Loss (100KHz-100MHz): -1.1dB Maximum
 Insertion Loss (100MHz-125MHz): -1.5dB Maximum
 Return Loss: -18dB Typ. @30MHz
 -12dB Typ. @80MHz

Crosstalk:

100KHz-60MHz -40dB Typical
 60MHz-100MHz -38dB Typical

Common Mode to Differential Mode Rejection:

100KHz-60MHz -45dB Typ (Tx) / -40dB Typ (Rx)
 60MHz-100MHz -40dB Typ (Tx) / -35dB Typ (Rx)

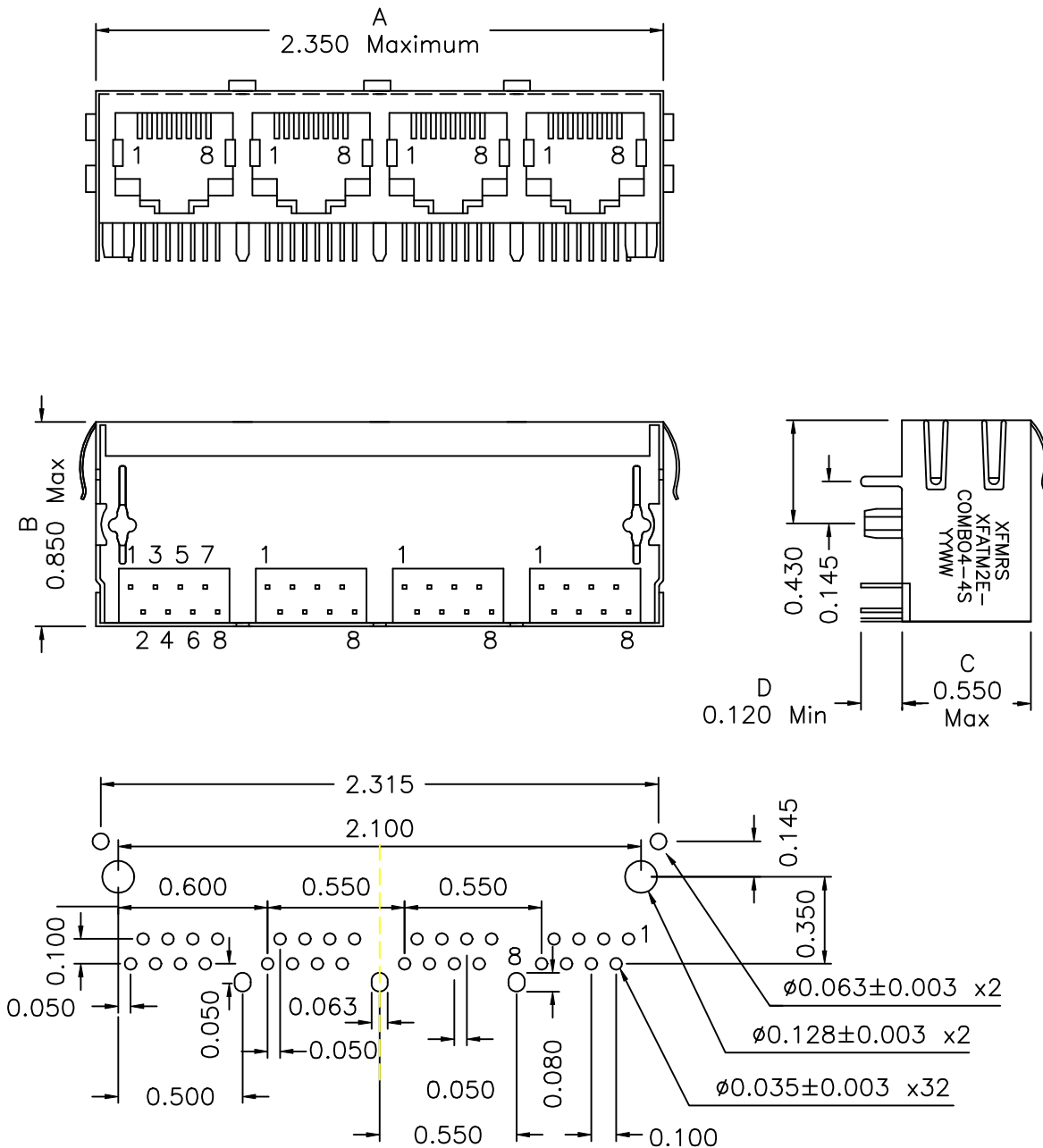
Notes:

- Solderability: Leads shall meet MIL-STD-202, Method 208D for solderability.
- Flammability: UL94V-0
- ASTM oxygen index: > 28%
- Insulation System: Class F 155°C. UL file E151556
- Operating Temperature Range: -40°C to +85°C
- Storage Temperature Range: -55°C to +125°C
- Aqueous wash compatible

DOC. REV A/1

XFMRs Inc.		Title: FOUR PORT COMBO	
UNLESS OTHERWISE SPECIFIED		P/N: XFATM2E-COMBO4-4S	REV. A
TOLERANCES: .xxx ±0.010		DWN. 李小锋	Oct-14-03
Dimensions in Inch		CHK. 廖玉坤	Oct-14-03
SHEET 1 OF 2		APP. BW	Oct-14-03

Mechanical Dimensions: (FOR COMB04-4S)



SUGGESTED MOUNTING PATTERN

XFMRs Inc.	Title: Mechanical Dimensions For COMB04-4S Series		
	UNLESS OTHERWISE SPECIFIED TOLERANCES: .xxx ±0.010 Dimensions in Inch	P/N: XFATM2E-COMB04-4S	REV. A
DOC. REV: A/1	SHEET 2 OF 2	DWN. 罗振江	Oct-14-03
		CHK. 廖玉坤	Oct-14-03
		APP. BW	Oct-14-03