

# Marshalling panel - PTRV 4 /RD-COL



3001872

<https://www.phoenixcontact.com/us/products/3001872>

Please be informed that the data shown in this PDF document is generated from our Online Catalog. Please find the complete data in the user documentation. Our General Terms of Use for Downloads are valid.

---



Marshalling panel, nom. voltage: 250 V, nominal current: 10 A, connection method: Push-in connection, 1st, 2nd, 3rd and 4th level, Rated cross section: 1.5 mm<sup>2</sup>, cross section: 0.14 mm<sup>2</sup> - 2.5 mm<sup>2</sup>, mounting: NS 35/7,5, NS 35/15, color: gray

---

## Your advantages

- Tool-free wiring in a confined space thanks to compact size
- High contact quality thanks to push-in technology as a replacement for Wire-Wrap®, TERMI-POINT®, etc.
- Individual color assignment of cable and terminal point to ensure error-free, safe operation
- Color configuration possible according to VDE 0812, VDE 0815, DIN 47100 or unlimited.
- The 2.3 mm test connection enables testing between the conductors with test pins commonly used in the industry

# Marshalling panel - PTRV 4 /RD-COL



3001872

<https://www.phoenixcontact.com/us/products/3001872>

## Commercial Data

Item number	3001872
Packing unit	1 pc
Minimum order quantity	1 pc
Sales Key	B02
Product Key	BE6211
Catalog Page	Page 54 (C-1-2019)
GTIN	4055626038322
Weight per Piece (including packing)	17.9 g
Weight per Piece (excluding packing)	15.56 g
Customs tariff number	85369010
Country of origin	PL

# Marshalling panel - PTRV 4 /RD-COL



3001872

<https://www.phoenixcontact.com/us/products/3001872>

## Technical Data

### Product properties

Product type	Marshalling terminal
Number of positions	2
Number of connections	16
Number of rows	4
Potentials	4

### Insulation characteristics

Overvoltage category	III
----------------------	-----

### Electrical properties

Rated surge voltage	6 kV
Maximum power dissipation for nominal condition	0.56 W

### Connection data

Number of connections per level	4
Nominal cross section	1.5 mm <sup>2</sup>

#### 1st, 2nd, 3rd and 4th level

Stripping length	8 mm ... 10 mm
Conductor cross section solid	0.14 mm <sup>2</sup> ... 2.5 mm <sup>2</sup>
Cross section AWG	26 ... 12
Conductor cross section flexible	0.14 mm <sup>2</sup> ... 1.5 mm <sup>2</sup>
Conductor cross section, flexible [AWG]	26 ... 14
Flexible conductor cross section flexible (ferrule, w/o plastic sleeve)	0.14 mm <sup>2</sup> ... 1.5 mm <sup>2</sup>
Flexible conductor cross section (ferrule with plastic sleeve)	0.14 mm <sup>2</sup> ... 1.5 mm <sup>2</sup>
Nominal current	10 A
Maximum load current	10 A (with 1.5 mm <sup>2</sup> conductor cross section)
Nominal voltage	250 V
Nominal cross section	1.5 mm <sup>2</sup>

#### 1st, 2nd, 3rd and 4th level Connection cross sections directly pluggable

Conductor cross section solid	0.34 mm <sup>2</sup> ... 2.5 mm <sup>2</sup>
Conductor cross section, solid [AWG]	20 ... 12
Conductor cross section flexible	0.34 mm <sup>2</sup> ... 1.5 mm <sup>2</sup>
Conductor cross section, flexible [AWG]	14
Flexible conductor cross section flexible (ferrule, w/o plastic sleeve)	0.34 mm <sup>2</sup> ... 1.5 mm <sup>2</sup>
Flexible conductor cross section (ferrule with plastic sleeve)	0.34 mm <sup>2</sup> ... 1.5 mm <sup>2</sup>

### Dimensions

Width	8.3 mm
-------	--------

# Marshalling panel - PTRV 4 /RD-COL



3001872

<https://www.phoenixcontact.com/us/products/3001872>

Height NS 35/15	63 mm
Height NS 35/7,5	55.5 mm
Length	64 mm

## Material specifications

Color	gray
Flammability rating according to UL 94	V0
Insulating material group	I
Insulating material	PA

## Mechanical properties

### Mechanical data

Open side panel	Yes
-----------------	-----

## Environmental and real-life conditions

### Ambient conditions

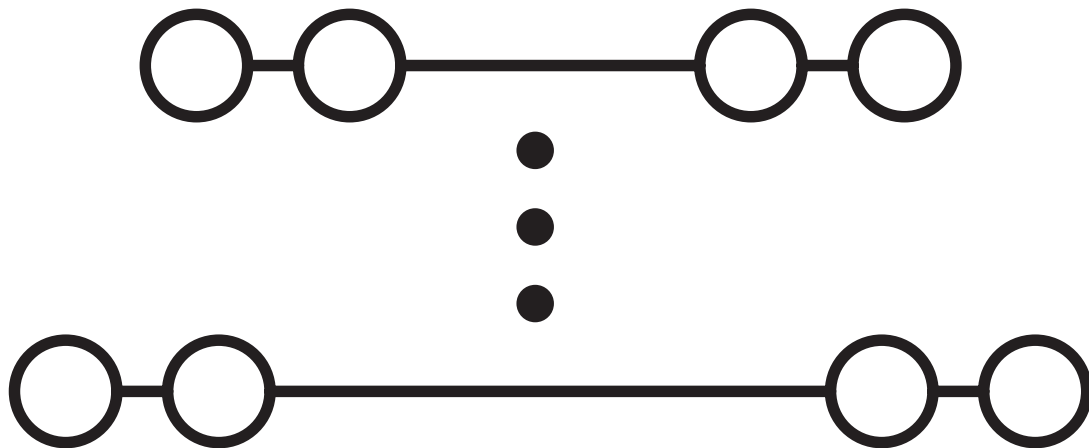
Ambient temperature (operation)	-60 °C ... 85 °C
Ambient temperature (storage/transport)	-25 °C ... 55 °C (for a short time, not exceeding 24 h, -60 °C to +70 °C)
Ambient temperature (assembly)	-5 °C ... 70 °C
Ambient temperature (actuation)	-5 °C ... 70 °C
Permissible humidity (storage/transport)	30 % ... 70 %

## Mounting

Mounting type	NS 35/7,5
	NS 35/15

Drawings

Circuit diagram



# Marshalling panel - PTRV 4 /RD-COL



3001872

<https://www.phoenixcontact.com/us/products/3001872>

## Approvals

<b>DNV</b> Approval ID: TAE000016Y				
---------------------------------------	--	--	--	--

<b>CSA</b> Approval ID: 13631				
	Nominal Voltage $U_N$	Nominal Current $I_N$	Cross Section AWG	Cross Section $mm^2$
Use group B				
	300 V	10 A	26 - 14	-
Use group D				
	300 V	10 A	26 - 14	-

<b>IECEE CB Scheme</b> Approval ID: NL-58817				
	Nominal Voltage $U_N$	Nominal Current $I_N$	Cross Section AWG	Cross Section $mm^2$
	250 V	10 A	-	-

<b>EAC</b> Approval ID: RU C-DE.BL08.B.00682				
---	--	--	--	--

<b>cULus Recognized</b> Approval ID: E60425				
	Nominal Voltage $U_N$	Nominal Current $I_N$	Cross Section AWG	Cross Section $mm^2$
Use group D				
	300 V	10 A	26 - 14	-

<b>KEMA-KEUR</b> Approval ID: 71-102890				
	Nominal Voltage $U_N$	Nominal Current $I_N$	Cross Section AWG	Cross Section $mm^2$
Only flexible conductors	250 V	10 A	-	0.14 - 1.5
Only rigid conductors	250 V	10 A	-	0.14 - 2.5

<b>EAC</b> Approval ID: B.01687				
------------------------------------	--	--	--	--

# Marshalling panel - PTRV 4 /RD-COL



3001872

<https://www.phoenixcontact.com/us/products/3001872>

## Classifications

### ECLASS

ECLASS-9.0	27141120
ECLASS-10.0.1	27141120
ECLASS-11.0	27141120

### ETIM

ETIM 8.0	EC000897
----------	----------

### UNSPSC

UNSPSC 21.0	39121400
-------------	----------

# Marshalling panel - PTRV 4 /RD-COL



3001872

<https://www.phoenixcontact.com/us/products/3001872>

## Environmental Product Compliance

China RoHS	Environmentally friendly use period: unlimited = EFUP-e
	No hazardous substances above threshold values

# Marshalling panel - PTRV 4 /RD-COL



3001872

<https://www.phoenixcontact.com/us/products/3001872>

## Accessories

### Spacer plate

Spacer plate - DP-PTRV 4 - 3270163

<https://www.phoenixcontact.com/us/products/3270163>

Spacer plate, length: 63.6 mm, width: 8.3 mm, height: 54 mm, color: gray



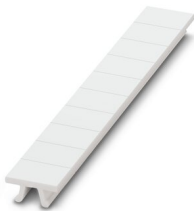
---

### Zack marker strip

Zack marker strip - ZB 8,3:UNBEDRUCKT - 0803444

<https://www.phoenixcontact.com/us/products/0803444>

Zack marker strip, Strip, white, unlabeled, can be labeled with: PLOTMARK, CMS-P1-PLOTTER, mounting type: snapped, for terminal block width: 8.3 mm, lettering field size: 10.5 x 8.3 mm



# Marshalling panel - PTRV 4 /RD-COL



3001872

<https://www.phoenixcontact.com/us/products/3001872>

## Retaining bracket

Retaining bracket - CDC-PTRV - 3270167

<https://www.phoenixcontact.com/us/products/3270167>



Retaining bracket, via four PTRV single modules, pitch: 8.3 mm, width: 35.6 mm, height: 71.5 mm, color: gray

---

## Zack marker strip

Zack marker strip - ZB 8,3,LGS:FORTL.ZAHLEN - 0803480

<https://www.phoenixcontact.com/us/products/0803480>



Zack marker strip, Strip, white, labeled, can be labeled with: CMS-P1-PLOTTER, mounting type: snapped, for terminal block width: 8.3 mm, lettering field size: 10.5 x 8.3 mm

# Marshalling panel - PTRV 4 /RD-COL

3001872

<https://www.phoenixcontact.com/us/products/3001872>



## Mounting material

Mounting material - PT-IL - 3208090

<https://www.phoenixcontact.com/us/products/3208090>

Operating decal for the push-in Technology



---

## Zack marker strip

Zack marker strip - ZB 8,3,QR:FORTL.ZAHLEN - 0803479

<https://www.phoenixcontact.com/us/products/0803479>

Zack marker strip, Strip, white, labeled, can be labeled with: CMS-P1-PLOTTER, mounting type: snapped, for terminal block width: 8.3 mm, lettering field size: 10.5 x 8.3 mm



# Marshalling panel - PTRV 4 /RD-COL



3001872

<https://www.phoenixcontact.com/us/products/3001872>

## Screwdriver

Screwdriver - SZF 0-0,4X2,5 - 1204504

<https://www.phoenixcontact.com/us/products/1204504>



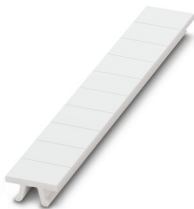
Actuation tool, for ST terminal blocks, also suitable for use as a bladed screwdriver, size: 0.4 x 2.5 x 75 mm, 2-component grip, with non-slip grip

---

## Zack marker strip

Zack marker strip - ZB 8,3 CUS - 8191573

<https://www.phoenixcontact.com/us/products/8191573>



Zack marker strip, Strip, white, labeled according to customer specifications, mounting type: snap into tall marker groove, for terminal block width: 8.3 mm, lettering field size: 10.5 x 8.3 mm

# Marshalling panel - PTRV 4 /RD-COL



3001872

<https://www.phoenixcontact.com/us/products/3001872>

## Actuation tool

Actuation tool - ST-BW 0 - 1200135

<https://www.phoenixcontact.com/us/products/1200135>

Actuation tool, for all 1.5 mm<sup>2</sup> spring cages from PT 1,5/S and FT 1,5/S



---

## End cover

End cover - D-PTRV 4 WH - 3270151

<https://www.phoenixcontact.com/us/products/3270151>

End cover, length: 63.6 mm, width: 3.8 mm, height: 48.9 mm, color: white



# Marshalling panel - PTRV 4 /RD-COL



3001872

<https://www.phoenixcontact.com/us/products/3001872>

## End cover

End cover - D-PTRV 4 WH 1-4 - 3270152

<https://www.phoenixcontact.com/us/products/3270152>



End cover, length: 63.6 mm, width: 2.2 mm, height: 48.9 mm, color: white

---

## End cover

End cover - D-PTRV 4 WH 1-4 LGS - 3270234

<https://www.phoenixcontact.com/us/products/3270234>



End cover, length: 63.6 mm, width: 2.2 mm, height: 48.9 mm, color: white

# Marshalling panel - PTRV 4 /RD-COL



3001872

<https://www.phoenixcontact.com/us/products/3001872>

## End cover

End cover - D-PTRV 4 WH 4-1 - 3270236

<https://www.phoenixcontact.com/us/products/3270236>



End cover, length: 63.6 mm, width: 2.2 mm, height: 48.9 mm, color: white

---

## End cover

End cover - D-PTRV 4 WH 4-1 LGS - 3270238

<https://www.phoenixcontact.com/us/products/3270238>



End cover, length: 63.6 mm, width: 2.2 mm, height: 48.9 mm, color: white

# Marshalling panel - PTRV 4 /RD-COL



3001872

<https://www.phoenixcontact.com/us/products/3001872>

## End cover

End cover - D-PTRV 4 WH A-D - 3270153

<https://www.phoenixcontact.com/us/products/3270153>



End cover, length: 63.6 mm, width: 2.2 mm, height: 48.9 mm, color: white

---

## End cover

End cover - D-PTRV 4 WH A-D LGS - 3270235

<https://www.phoenixcontact.com/us/products/3270235>



End cover, length: 63.6 mm, width: 2.2 mm, height: 48.9 mm, color: white

# Marshalling panel - PTRV 4 /RD-COL



3001872

<https://www.phoenixcontact.com/us/products/3001872>

## End cover

End cover - D-PTRV 4 WH D-A - 3270237

<https://www.phoenixcontact.com/us/products/3270237>



End cover, length: 63.6 mm, width: 2.2 mm, height: 48.9 mm, color: white

---

## End cover

End cover - D-PTRV 4 WH D-A LGS - 3270239

<https://www.phoenixcontact.com/us/products/3270239>



End cover, length: 63.6 mm, width: 2.2 mm, height: 48.9 mm, color: white

# Marshalling panel - PTRV 4 /RD-COL



3001872

<https://www.phoenixcontact.com/us/products/3001872>

## DIN rail perforated

DIN rail perforated - NS 35/ 7,5 PERF 2000MM - 0801733

<https://www.phoenixcontact.com/us/products/0801733>



DIN rail perforated, acc. to EN 60715, material: Steel, galvanized, passivated with a thick layer, Standard profile, color: silver, Pack of 25 (50 m)

---

## DIN rail, unperforated

DIN rail, unperforated - NS 35/ 7,5 UNPERF 2000MM - 0801681

<https://www.phoenixcontact.com/us/products/0801681>



DIN rail, unperforated, acc. to EN 60715, material: Steel, galvanized, passivated with a thick layer, Standard profile, color: silver, Pack of 25 (50 m)

# Marshalling panel - PTRV 4 /RD-COL



3001872

<https://www.phoenixcontact.com/us/products/3001872>

## DIN rail perforated

DIN rail perforated - NS 35/ 7,5 WH PERF 2000MM - 1204119

<https://www.phoenixcontact.com/us/products/1204119>



DIN rail perforated, acc. to EN 60715, material: Steel, Galvanized, white passivated, Standard profile, color: silver, Pack of 25 (50 m)

---

## DIN rail, unperforated

DIN rail, unperforated - NS 35/ 7,5 WH UNPERF 2000MM-VPE 10 - 1204122

<https://www.phoenixcontact.com/us/products/1204122>



DIN rail, unperforated, acc. to EN 60715, material: Steel, Galvanized, white passivated, Standard profile, color: silver, Pack of 10 (20 m)

# Marshalling panel - PTRV 4 /RD-COL

3001872

<https://www.phoenixcontact.com/us/products/3001872>



## DIN rail, unperforated

DIN rail, unperforated - NS 35/ 7,5 AL UNPERF 2000MM - 0801704

<https://www.phoenixcontact.com/us/products/0801704>



DIN rail, unperforated, acc. to EN 60715, material: Aluminum, uncoated, Standard profile, color: silver, Pack of 25 (50 m)

---

## DIN rail perforated

DIN rail perforated - NS 35/ 7,5 ZN PERF 2000MM - 1206421

<https://www.phoenixcontact.com/us/products/1206421>



DIN rail perforated, acc. to EN 60715, material: Steel, galvanized, Standard profile, color: silver, Pack of 25 (50 m)

# Marshalling panel - PTRV 4 /RD-COL

3001872

<https://www.phoenixcontact.com/us/products/3001872>



## DIN rail, unperforated

DIN rail, unperforated - NS 35/ 7,5 ZN UNPERF 2000MM - 1206434

<https://www.phoenixcontact.com/us/products/1206434>



DIN rail, unperforated, acc. to EN 60715, material: Steel, galvanized, Standard profile, color: silver, Pack of 25 (50 m)

---

## DIN rail, unperforated

DIN rail, unperforated - NS 35/ 7,5 CU UNPERF 2000MM-VPE 10 - 0801762

<https://www.phoenixcontact.com/us/products/0801762>



DIN rail, unperforated, acc. to EN 60715, material: Copper, uncoated, Standard profile, color: copper-colored, Pack of 10 (20 m)

# Marshalling panel - PTRV 4 /RD-COL

3001872

<https://www.phoenixcontact.com/us/products/3001872>



## End cap

End cap - NS 35/ 7,5 CAP - 1206560

<https://www.phoenixcontact.com/us/products/1206560>

DIN rail end piece, for DIN rail NS 35/7.5



---

## End clamp

End clamp - CLIPFIX 35 - 3022218

<https://www.phoenixcontact.com/us/products/3022218>

Quick mounting end clamp for NS 35/7,5 DIN rail or NS 35/15 DIN rail, with marking option, width: 9.5 mm, color: gray



# Marshalling panel - PTRV 4 /RD-COL

3001872

<https://www.phoenixcontact.com/us/products/3001872>

## End clamp

End clamp - CLIPFIX 35-5 - 3022276

<https://www.phoenixcontact.com/us/products/3022276>



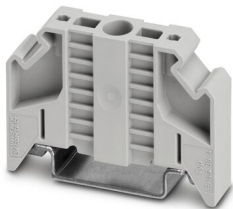
Quick mounting end clamp for NS 35/7,5 DIN rail or NS 35/15 DIN rail, with marking option, with parking option for FBS...5, FBS...6, KSS 5, KSS 6, width: 5.15 mm, color: gray

---

## End clamp

End clamp - E/NS 35 N - 0800886

<https://www.phoenixcontact.com/us/products/0800886>



End clamp, width: 9.5 mm, color: gray

# Marshalling panel - PTRV 4 /RD-COL



3001872

<https://www.phoenixcontact.com/us/products/3001872>

## End clamp

End clamp - E/UK - 1201442

<https://www.phoenixcontact.com/us/products/1201442>

End clamp, material: PA, color: gray, Mounting on a DIN rail NS 32 or NS 35



---

## End clamp

End clamp - E/UK 1 - 1201413

<https://www.phoenixcontact.com/us/products/1201413>

End clamps, for supporting the ends of double-level and three-level terminal blocks, width: 10 mm, color: gray



---

Phoenix Contact 2022 © - all rights reserved  
<https://www.phoenixcontact.com>

Phoenix Contact USA  
586 Fulling Mill Road  
Middletown, PA 17057, United States  
(+717) 944-1300  
[info@phoenixcon.com](mailto:info@phoenixcon.com)