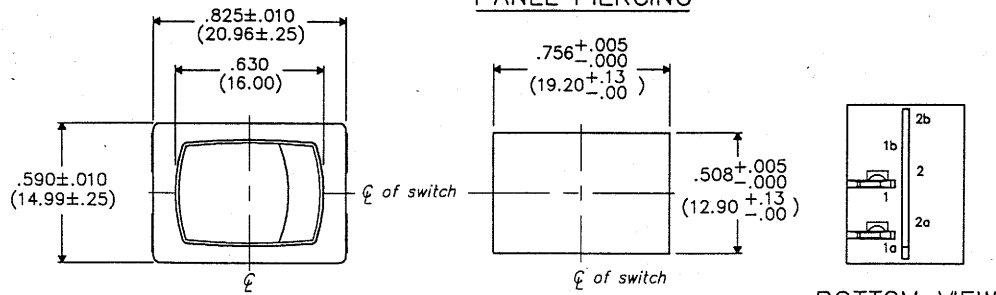


DIMENSIONS IN INCHES (MILLIMETERS)
DO NOT SCALE DRAWING

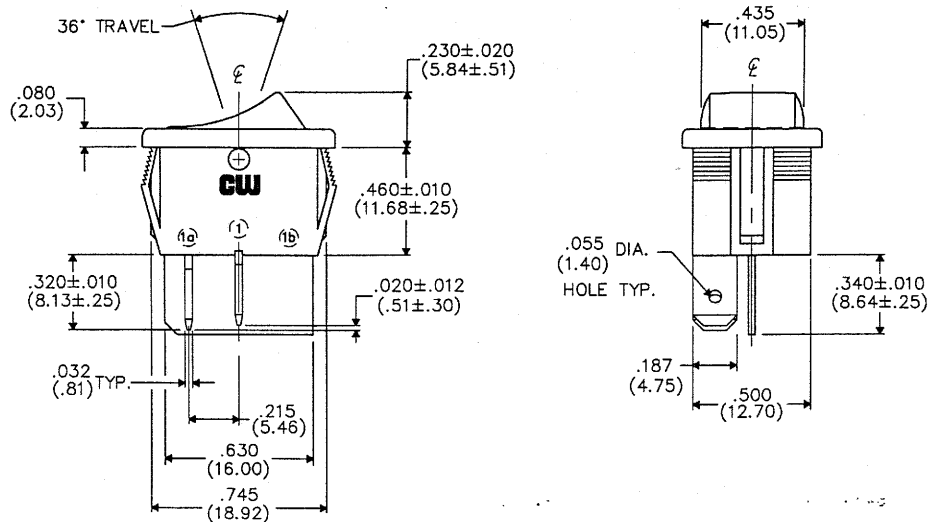
Dwg. No.

GRS-4011-0000

PANEL PIERCING



BOTTOM VIEW



MATERIAL:

ROCKER KNOB- Nylon 94V-2
 HOUSING- Nylon 94V-2
 TERMINAL/STATIONARY/MOVING CONTACT- Copper alloy,
 and/or copper alloy clear chromate plated.
 SPRING- music wire
 PLUNGER- plated steel

PERFORMANCE STANDARDS-

① Endurance- 100,000 cycles, no load, minimum
 25,000 cycles at rated load minimum up to 13A
 125 VAC
 10,000 cycles at rated load minimum at 13A
 250 VAC
 Contact Resistance- less than .01 Ohm at 10 mA (initial)
 Operating Temperature- 105° C maximum
 High Voltage Dielectric Withstanding Voltage- 2,500 V,
 60 Hz for 1 minute between mounting
 surface and circuit connections

HUMIDITY- Insulation resistance > 10³ MOhms after 100 hours
 at 95% R.H. and 50° C followed by 1 hour dry
 at ambient room conditions

ELECTRICAL RATING-

13A 125 VAC , 10A 250 VAC
 1/2 H.P. 125-250 VAC
 5A 14V(T)

LISTING AGENCIES-



E
D
C
B
A

1 2 3 4 5 6 7 8 9 10

FORM-B4	REVISIONS	0
	RELEASED DGW 7-26-00	1
AUG 26 2000		
13A WAS 16A IN TWO PLACES IN ENDURANCE NOTES.		
DGW 10-31-2000		
AW 11-1-00		

CW INDUSTRIES
 Southampton, Pa. 18966

Title: **ROCKER SWIDGET ASSEMBLY (POP IN) S.P.- S.T.**

TOLERANCES UNLESS OTHERWISE SPECIFIED	
2 Place Decimal ±.010	METRIC
3 Place Decimal ±.005	1 Place Dec. ±.25mm
Angles ±1°	2 Place Dec. ±.13mm

Made for: CW IND.
 Drawn by: DGW 7-26-00
 Checked by: G. Guls 7-26-00
 Approval: *[Signature]* 7-26-00

Division: SWITCH
 Dwg. No. GRS-4011-0000

MASTER