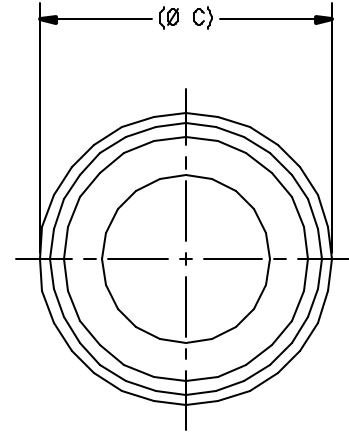
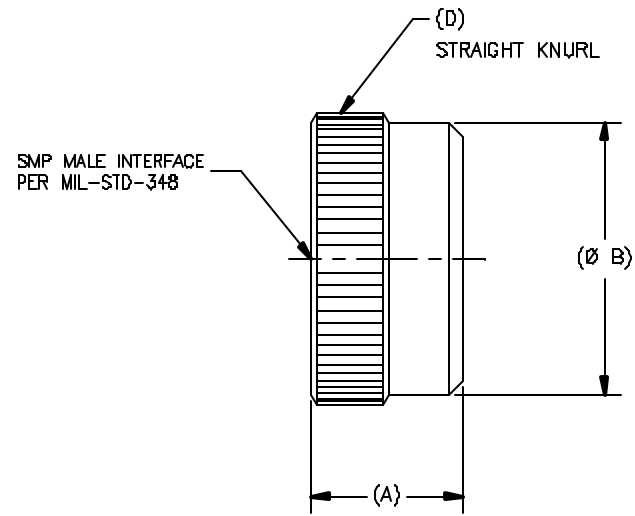


P/N	APPLICABLE NOTES	(A)	(Ø B)	(Ø C)	(D)
-1SF	1,2	.080	.143	.154	50P
-2SF	1,2	.120	.163	.174	50P
-3SF	1,2	.115	.163	.184	128P

REVISIONS				
ZONE	REV	DESCRIPTION	DATE	BY
-	A	ECO 11733	06/27/00	IMG
-	B	ECO 14924	10.08.02	AGS



DRAWING NO.	REV.
P769	B

- NOTE(S):
1. MATERIAL:
BODY: 303 SST PER ASTM A-582
 2. FINISH:
BODY: PASSIVATE PER QQ-N-290

NOTICE

THIS DRAWING INCLUDES A CONFIDENTIAL, PROPRIETARY DESIGN ORIGINATED BY TENSOLITE COMPANY AND ALL DESIGN, MANUFACTURING INFORMATION, USE AND SALE RIGHTS RESERVING THE SAME ARE EXPRESSLY RESERVED. IT IS GRANTED UNDER A CONFIDENTIAL RELATIONSHIP FOR A SPECIFIC PURPOSE AND THE RECIPIENT AGREES BY ACCEPTING THIS DRAWING NOT TO DISSEMINATE, REPRODUCE, ANY INFORMATION REGARDING IT TO ANY UNAUTHORIZED PERSON UNLESS INDICATED IN OTHER PARTS OF ANY SPECIAL FEATURES PERTAINING TO THIS DESIGN. ALL PATENT RIGHTS HERETO ARE EXPRESSLY RESERVED BY TENSOLITE COMPANY, LONG BEACH, CALIFORNIA 90815.

TOLERANCES AND NOTES EXCEPT AS NOTED			
DIMENSIONS ARE IN INCHES			
LINEAR .01 & .015			
ANGULAR ± 1/2°			
RADIATION ± 1/32"			
1. MACHINE FINISH: ✓ FINE			
2. BREAK ALL SHAW CORNERS AND RKS.			
3. MACHINED FILLETS: 0.05 MAX.			
4. MACHINED SURFACES SUBJECT TO RESPECTIVE AGE FINISH - SEE DIMENSIONS PER INCH.			
5. MACHINED DIMENSIONS CONCENTRIC WITH KEY TAIL.			
6. DIMENSIONS TO BE MET BEFORE PLATING.			
7. DIMENSIONS FOR ALL SURFACES 45°.			
8. SURFACES PER H-02.			
9. REMOVE FRAYED EDGES ON TEFLO.			
10. REMOVE ALL BURRS.			

APPROVAL INITIALS	DATE	TITLE
DRAWN BY: DKN	08.10.00	SMP FULL DETENT PRESS IN SHROUD
CHECKED:		
DUALITY:		
ENGINEERING: ATV	10.08.02	

UNITS	SIZE	PRECISION	REQUIREMENT

Tensolite HIGH PERFORMANCE CABLES & INTERCONNECT SYSTEMS
Long Beach, California 90815

SCALE: Z0/1	REV: 01.PXX\CLP769	SHEET 1 of 1
SIZE: C 30990	DRAWING NO. P769	REV. B