

Surface Mount Low Pass Filters

50Ω DC to 865 MHz

NEW!

**SCLF-SERIES
SALF-SERIES**

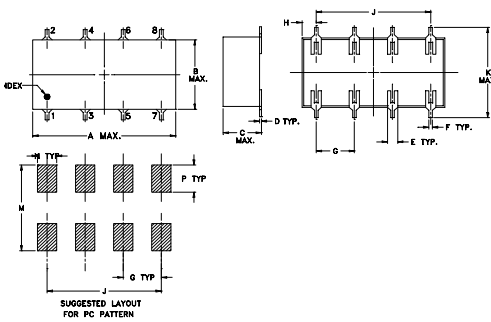
Maximum Ratings

| | |
|-----------------------|----------------|
| Operating Temperature | -40°C to 85°C |
| Storage Temperature | -55°C to 100°C |
| Power Input | 0.5W Max. |

Pin Connections

| | |
|--------|-------------|
| IN | 1 |
| OUT | 8 |
| GROUND | 2,3,4,5,6,7 |

Outline Drawing



Features

- 7-section elliptic function
- excellent rejection, 20 dB at $1.25^* f_3$ dB and 40 dB at $1.46^* f_3$ dB
- low cost

Applications

- defense communications
- receivers transmitters
- harmonic rejection of vcos



CASE STYLE: YY161/YY101

Electrical Specifications

| MODEL NO. | PASSBAND (MHz) (loss < 1 dB) Min. | fco, MHz Nom. (loss 3 dB) Typ. | STOP BAND (MHz) | | VSWR (:1) | | CASE STYLE | PRICE \$ Qty. (1-9) |
|-----------|---|---|------------------------|------------------------|------------------|------------------|------------|------------------------|
| | | | (loss > 20 dB) Min. | (loss > 40 dB) Min. | Passband Typ. | Stopband Typ. | | |
| SCLF-4.7 | DC-4.7 | 5.6 | 6.60-7.40 | 7.4-600 | 1.25 | 18 | YY161 | 8.95 |
| SCLF-8.4 | DC-8.4 | 9.4 | 11.4-12.6 | 12.6-210 | 1.25 | 18 | YY161 | 8.95 |
| SCLF-10 | DC-10 | 12.2 | 14.0-16.0 | 16.0-230 | 1.20 | 18 | YY161 | 8.95 |
| SCLF-23 | DC-23 | 25 | 31.0-34.0 | 34.0-320 | 1.5 | 18 | YY161 | 8.95 |
| SCLF-27 | DC-27 | 30 | 36.0-41.0 | 41.0-480 | 1.3 | 18 | YY161 | 8.95 |
| SCLF-36 | DC-36 | 40 | 50.0-57.0 | 57.0-390 | 1.3 | 18 | YY161 | 8.95 |
| SCLF-44 | DC-44 | 48.5 | 59.0-65.5 | 65.5-420 | 1.3 | 18 | YY161 | 8.95 |
| SCLF-65 | DC-65 | 71 | 86.0-96.0 | 96-510 | 1.3 | 18 | YY161 | 8.95 |
| SALF-78 | DC-78 | 93 | 120-136 | 136-550 | 1.3 | 18 | YY101 | 6.95 |
| SALF-116 | DC-116 | 142 | 182-220 | 220-825 | 1.3 | 18 | YY101 | 6.95 |
| SALF-146 | DC-146 | 171 | 210-240 | 240-850 | 1.5 | 18 | YY101 | 6.95 |
| SALF-265 | DC-265 | 308 | 390-470 | 470-1100 | 1.2 | 18 | YY101 | 6.95 |
| SALF-325 | DC-325 | 383 | 480-580 | 580-1250 | 1.3 | 18 | YY101 | 6.95 |
| SALF-396 | DC-396 | 458 | 570-620 | 620-1430* | 1.3 | 18 | YY101 | 6.95 |
| SALF-490 | DC-490 | 620 | 800-900 | 900-1600* | 1.3 | 18 | YY101 | 6.95 |
| SALF-580 | DC-580 | 720 | 1000-1300 | 1300-2100 | 1.5 | 18 | YY101 | 6.95 |
| SALF-680 | DC-680 | 790 | 1090-1400 | 1400-2200 | 1.4 | 18 | YY101 | 6.95 |
| SALF-800 | DC-800 | 935 | 1200-1330 | 1330-2550* | 1.6 | 18 | YY101 | 6.95 |
| SALF-865 | DC-865 | 980 | 1300-1400 | 1400-2550* | 1.4 | 18 | YY101 | 6.95 |

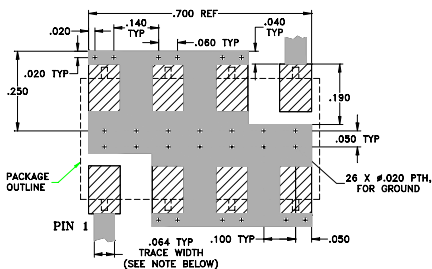
*Stopband loss, 35 dB min.

YY101*/YY161 Outline Dimensions (inch)

| A | B | C | D | E | F | G | H |
|-------|-------|------|-------|------|------|-------|------|
| .75 | .38 | .28 | .010 | .050 | .020 | .200 | .075 |
| 19.05 | 9.65 | 7.11 | 0.25 | 1.27 | 0.51 | 5.08 | 1.91 |
| J | K | L | M | N | P | wt. | |
| .600 | .450 | — | .470 | .100 | .150 | grams | |
| 15.24 | 11.43 | — | 11.94 | 2.54 | 3.81 | 1.6 | |

*For YY101, C=0.2" (5.08 mm)

Demo Board MCL P/N: TB-187 Suggested PCB Layout (PL-049)



NOTE: TRACE WIDTH IS SHOWN FOR ROGERS RO4350 WITH DIELECTRIC THICKNESS .050" ± .002". COPPER: 1/2 OZ. EACH SIDE. FOR OTHER MATERIALS TRACE WIDTH MAY NEED TO BE MODIFIED.

■ DENOTES PCB COPPER LAYOUT
 ▨ DENOTES COPPER LAND PATTERN FREE OF SOLDER MASK

For other cut-off frequency requirements, please contact factory, new models typically ship within 2-3 weeks A.R.O

