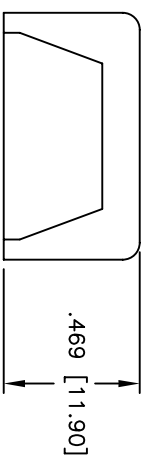
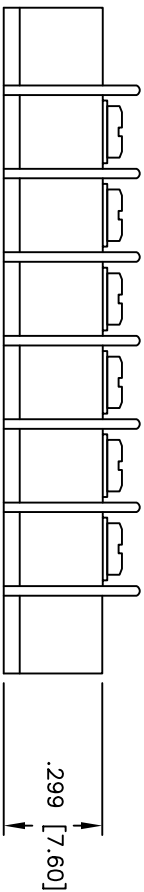
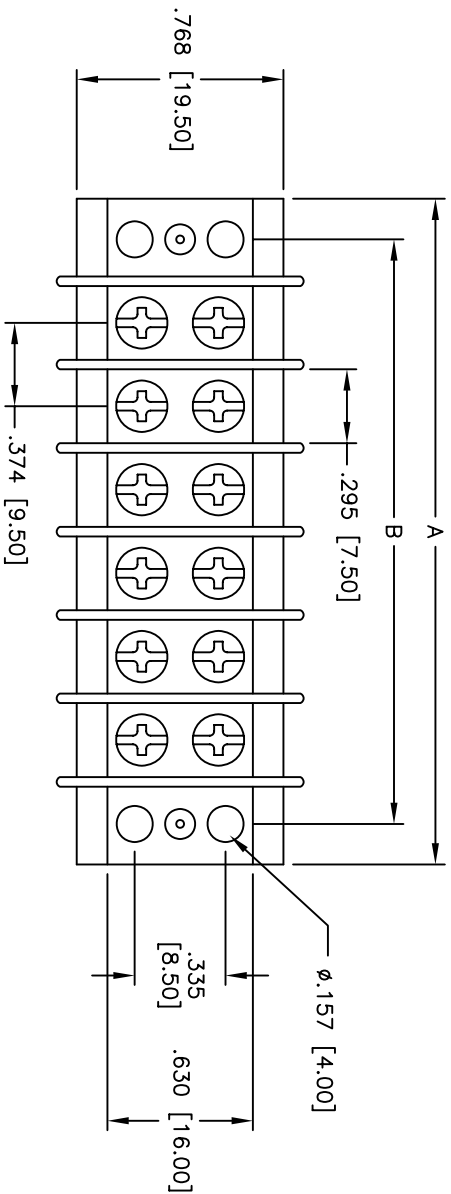


Rev	AWO #	Description	Date	Appr
-		RELEASED	6/9/05	

APPROVED: \_\_\_\_\_  
 DATE: \_\_\_\_\_ TITLE: \_\_\_\_\_



B

**SPECIFICATIONS:**

- Material: Phenolic, glass reinforced, rated UL 94V-0
- Insulator color: Black
- Plating:
- Contacts: Brass, Tin plated
- Screws: Steel, Nickel plated
- Hardware: Brass, Tin plated
- Electrical:
- Operating voltage: 600 VAC max.
- Current rating: 10 Amps max.
- Contact resistance: 20 mohms max. initial
- Insulation resistance: 1,000 Mohms min. @ 500 VDC
- Dielectric withstanding voltage: 2,000 VAC for 1 minute
- Mechanical:
- Wire range: 18 - 12 AWG
- Temperature Rating: -40°C to +100°C
- Environmental:
- Lead free, RoHS compliant

Positions: 2 thru 56  
 A = .374 [9.50] x No. of Positions per Row + .669 [17.00]  
 B = .374 [9.50] x No. of Spaces

UNLESS OTHERWISE SPECIFIED ALL DIMENSIONS ARE INCHES [MM]	
TOLERANCES: EXCEPT AS NOTED	
INCHES	HOLDS
.X ± .10	ØX ± .10
.XX ± .020	ØXX ± .015
.XXX ± .015	ØXXX ± .010
APPROVALS	DATE

**ADAM TECH**

909 Railway Avenue, Union, NJ 07083  
 Phone: 908-687-5000 Fax: 908-687-5710

TITLE: .374 [9.50] DUAL ROW BARRIER BLOCK

DRAWN	SS	6/9/05	SIZE	PART NO.	REV.
CHECKED			X	TDA-XX	
APPROVED			REF:	SCALE: NTS	SHEET 1 OF 1

A

6

5

4

3

2

1