

Dustproof

ELE120AY-3-Z

High Inrush Lever Switches



RoHS Compliant

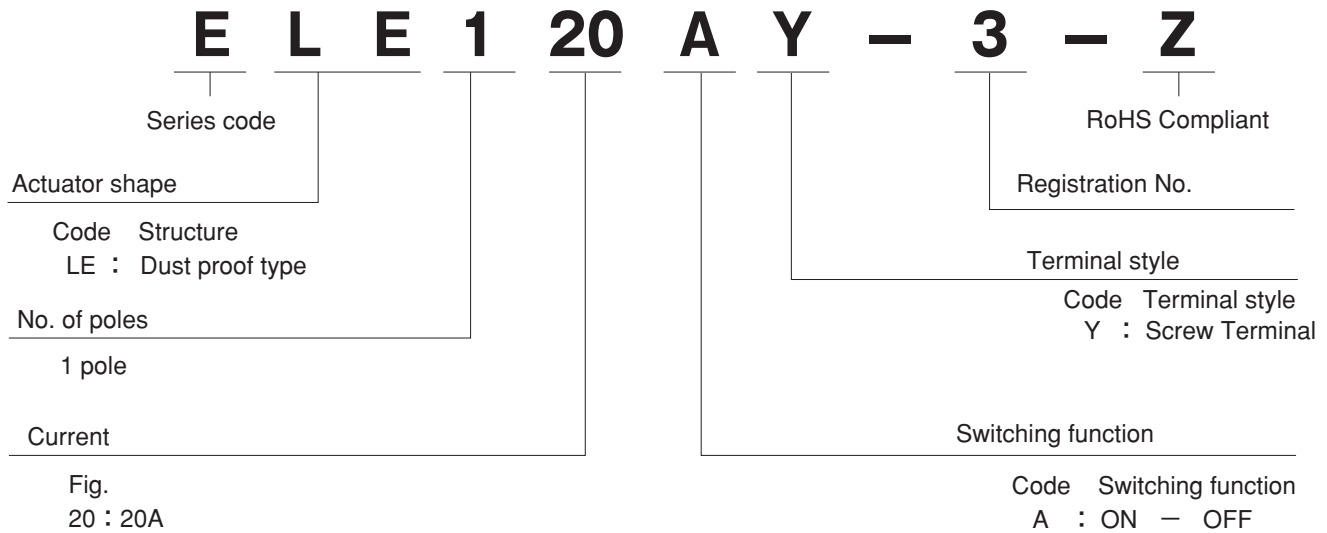
Features

1. Maximum rush current: 120A.
2. The overseas Standard C-US UL approved.

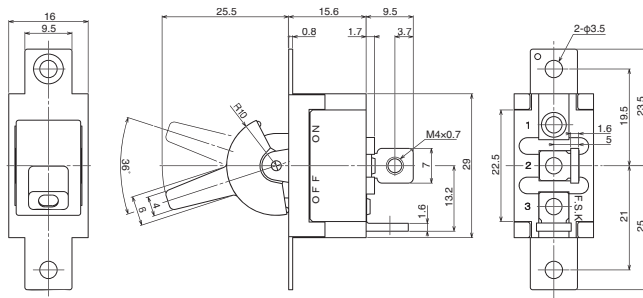
Specifications

Rating	Voltage	Inrush current	Power factor	Breaking current	Power factor	Initial contact resistance	Dielectric strength	Insulation resistance	Electrical life	
Resistive load	AC125V 20A	AC125V	120A	0.6	20A	0.9	30mΩ Max. (DC2~4V 1A)	AC2000V min	100MΩ Min. (DC500V)	50,000
	AC250V 12A	AC250V	72A	0.6	12A	0.9				

Part Numbering



SPST



Switching function	Viewed from part & rating marking side	
Part No.	ON	OFF
★ELE120AY-3-Z	ON	OFF
Connecting terminals	2-3	-

Panel Cut-Out Dimensions

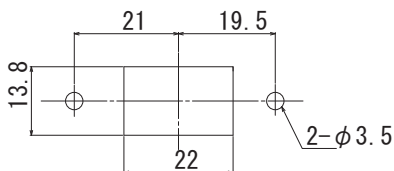
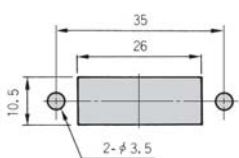
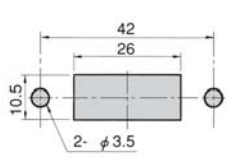


Table of Part Numbers

Terminal style	Switching function	1-Pole				2-Poles		
		10A	15A	20A	25A	10A	15A	25A
Solder Terminal	ON-OFF	-	★EL115A12-Z	-	★EL125A12-Z	-	▲EL215K12-Z	★EL225K12-Z
		-	-	-	-	-	★ELE215K12-Z	★ELE225K12-Z
	ON-ON	-	★EL115D12-Z	-	★EL125D12-Z	-	★EL215N12-Z	★EL225N12-Z
		-	-	-	-	-	-	★ELE225N12-Z
ON-OFF-ON	-	★EL115E12-Z	-	-	-	★EL215P12-Z	-	
TAB#250	ON-OFF	-	★EL115A-Z	-	★EL125A-Z	-	★EL215K-Z	★EL225K-Z
		-	★ELE115A-Z	-	★ELE125A-Z	-	★ELE215K-Z	★EL225K-14-Z
		-	-	-	-	-	-	★EL225K-15-Z
		-	-	-	-	-	-	★ELE225K-Z
	ON-ON	-	★EL115D-Z	-	★EL125D-Z	-	★EL215N-Z	★EL225N-Z
		-	★ELE115D-Z	-	★ELE125D-Z	-	★ELE215N-Z	★ELE225N-Z
	ON-OFF-ON	-	★EL115E-Z	-	▲EL125E-Z	-	★EL215P-Z	★EL225P-Z
		-	★ELE115E-Z	-	▲ELE125E-Z	-	-	-
	ON-(ON)	-	-	-	-	★EL210R-Z	-	-
	(ON)-OFF-(ON)	★EL120G-Z	-	▲EL120G-Z	-	-	-	-
ON-OFF-(ON)	-	-	-	-	-	-	-	

Panel Cut-Out Dimensions

Series	ELE115 ELE125	ELE215 ELE225
Dimensions		
Panel thickness	3.5 mm Max.	3.5 mm Max.

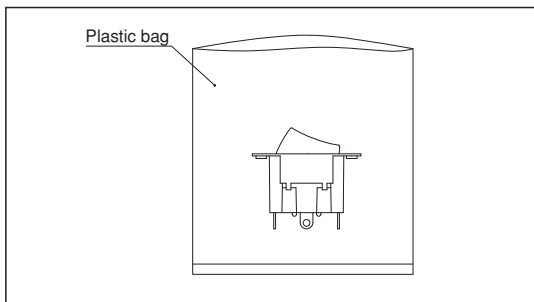
Flux Cleaning

For the solvent, use the fluorine-based or alcohol-based solvent.
Solvent: Fluorine or Alcohol type

Soldering Specifications

Device : Soldering iron
420°C, Max.; 3 seconds, Max.

Packaging Specification



★ : Made to order products. ▲ : Inquiry products.