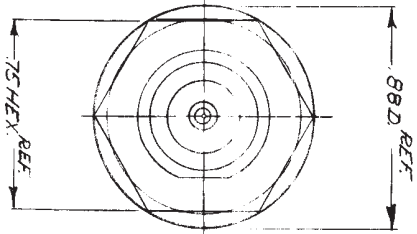
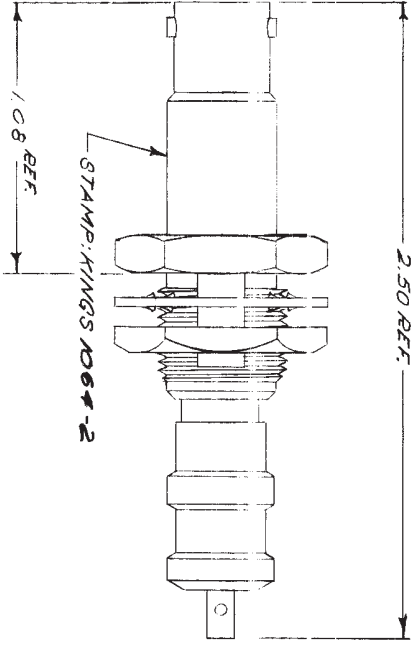
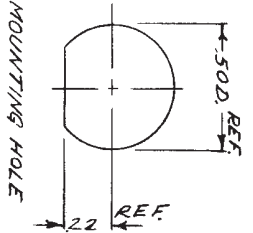


1064-2

REVISIONS

ISSUE

CHANGES



NOTES:
1. MUST WITHSTAND 15KV DC FOR ONE MINUTE AT 8,500 FT.

- UNLESS OTHERWISE SPECIFIED:
1. TOLERANCES:
FRACTIONS ± .010 DECIMALS ± .004 ANGLES ± 0° 30'
 1. I. R. CONCENTRICITY OF ANY 2 DIAMETERS MAY NOT EXCEED THE SUM OF THEIR TOLERANCES.
 2. REMOVE ALL BURRS, BREAK SHARP EDGES .005 MAX.
 3. NO FILLETS PERMITTED.
 4. SURFACE ROUGHNESS 63 MICRONS RMS MAX.
 5. ALL DIMENSIONS PRIOR TO PLATING.

ITEM	REQ'D	DESCRIPTION	DRAWING NO.

REF:	
FINISH	
SPEC.	
MATL.	
SPEC.	
DRAWN	A.M.E.
DATE	3 DEC 68
APPR.	
DATE	4 DEC 68
BULKHEAD RECEPTACLE KINGS ELECTRONICS 40 MARBLEDALE ROAD TUCKAHOE, N. Y. 10707	
1064-2	

S-10