

90° HYBRID MODEL SQ-67

10% BANDWIDTH

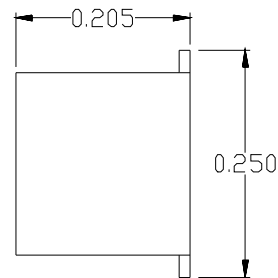
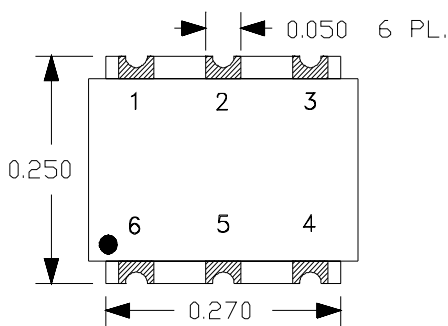
427.5 - 477.5 MHz

SPECIFICATIONS (Rev. "A" 8/31/99)

Operating Frequency:	427.5 - 477.5 MHz	Isolation (dB):	25 (Typ) / 20 (Min)
Insertion Loss (dB):	0.2 (Typ) / 0.4 (Max)	VSWR:	1.2:1
Amplitude Unbalance (dB):	0.5 (Typ) / 0.7 (Max)	Impedance:	50 Ohms
Phase Unbalance:	1.0° (Typ) / 3.0° (Max)	Input Power Rating:	1 Watt (Max)
		Operating Temp. Range:	-20° to +70°C

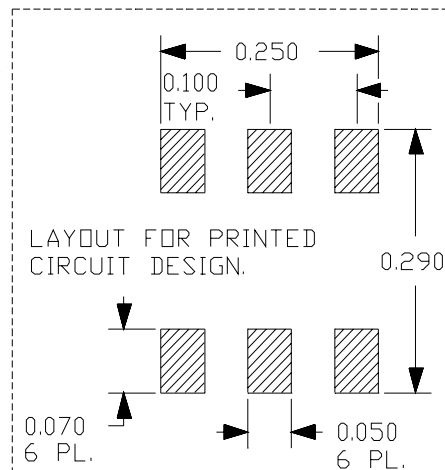
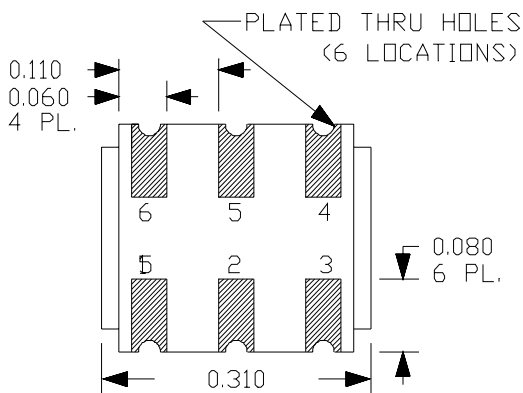


MECHANICAL OUTLINE: 134



PIN-OUT	
Input	6
+90° Output	1
0° Output	2
Isolated*	5
Grnd.**	3,4

* Terminate Isolated port in
50 Ohms Externally
** Ground Externally



90° HYBRID MODEL SQ-67

10% BANDWIDTH

427.5 - 477.5 MHz

PERFORMANCE PLOTS

