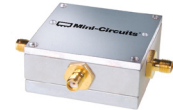


Power Splitter/Combiner

ZA3PD-1.5+

3 Way-0° 50Ω 750 to 1500 MHz



SMA version shown
CASE STYLE: CC51

Connectors	Model
SMA	ZA3PD-1.5-S+
N-TYPE	ZA3PD-1.5-N+

+RoHS Compliant
The +Suffix identifies RoHS Compliance. See our web site for RoHS Compliance methodologies and qualifications

Maximum Ratings

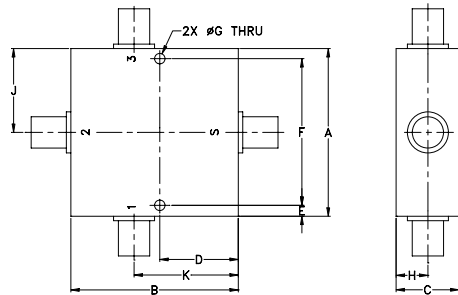
Operating Temperature	-55°C to 100°C
Storage Temperature	-55°C to 100°C
Power Input (as a splitter)	10W
Internal Dissipation	0.375W
DC Current	900 mA (300 mA for each port)

Permanent damage may occur if any of these limits are exceeded.

Coaxial Connections

SUM PORT	S
PORT 1	1
PORT 2	2
PORT 3	3

Outline Drawing



Outline Dimensions (inch/mm)

A	B	C	D	E	F
2.00	2.00	.75	.938	.13	1.750
50.80	50.80	19.05	23.83	3.30	44.45
G	H	J	K	wt	
.125	.38	1.00	1.25	grams	
3.18	9.65	25.40	31.75	200.0	

Features

- up to 10W power input as splitter
- low insertion loss, 0.3 dB typ.
- rugged, shielded case

Applications

- cellular
- satellite distribution
- communication system

Electrical Specifications

FREQ. RANGE (MHz)	ISOLATION (dB)		INSERTION LOSS (dB) ABOVE 4.8 dB		AMPLITUDE UNBALANCE (dB)
	Typ.	Min.	Typ.	Max.	
f_L - f_U					Max.
750-1500	20	14	0.3	0.7	0.4

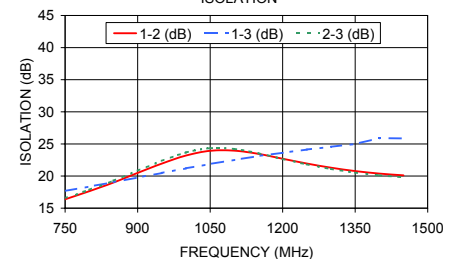
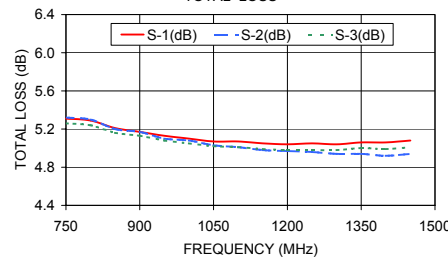
Typical Performance Data

Freq. (MHz)	Total Loss ¹ (dB)			Amp. Unbal. (dB)	Isolation (dB)			Phase Unbal. (deg.)	VSWR S	VSWR 1	VSWR 2	VSWR 3
	S-1	S-2	S-3		1-2	1-3	2-3					
750.00	5.31	5.32	5.26	0.06	16.38	17.68	16.56	1.52	1.78	1.20	1.65	1.20
800.00	5.29	5.30	5.24	0.06	17.64	18.37	17.86	1.64	1.69	1.22	1.66	1.22
850.00	5.21	5.20	5.16	0.05	18.99	19.05	19.28	1.65	1.60	1.23	1.66	1.23
900.00	5.17	5.17	5.13	0.04	20.49	19.77	20.84	1.77	1.51	1.25	1.66	1.24
950.00	5.13	5.10	5.08	0.04	21.94	20.48	22.37	1.79	1.44	1.25	1.64	1.24
1000.00	5.10	5.08	5.05	0.05	23.20	21.20	23.67	1.91	1.36	1.25	1.62	1.24
1050.00	5.07	5.03	5.02	0.05	23.93	21.88	24.33	2.00	1.30	1.25	1.60	1.24
1100.00	5.07	5.01	5.01	0.06	23.96	22.51	24.21	2.08	1.24	1.25	1.57	1.24
1150.00	5.05	4.98	4.99	0.07	23.45	23.12	23.54	2.15	1.18	1.25	1.54	1.23
1200.00	5.04	4.97	4.98	0.07	22.70	23.63	22.66	2.25	1.13	1.25	1.52	1.23
1250.00	5.05	4.96	4.98	0.09	21.95	24.13	21.83	2.38	1.09	1.26	1.49	1.24
1300.00	5.04	4.94	4.98	0.11	21.30	24.56	21.10	2.49	1.06	1.26	1.47	1.24
1350.00	5.06	4.94	5.00	0.11	20.78	24.99	20.54	2.52	1.03	1.27	1.46	1.25
1400.00	5.06	4.92	4.99	0.13	20.38	25.90	20.11	2.63	1.02	1.28	1.45	1.26
1450.00	5.08	4.94	5.01	0.14	20.12	25.87	19.81	2.67	1.03	1.28	1.44	1.26
1500.00	5.08	4.92	5.02	0.16	19.90	26.38	19.57	2.82	1.03	1.28	1.43	1.26

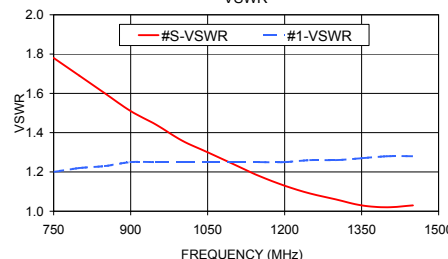
ZA3PD-1.5+ TOTAL LOSS

1. Total Loss = Insertion Loss + 4.8dB splitter loss.

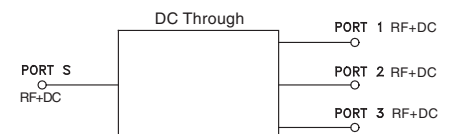
ZA3PD-1.5+ ISOLATION



ZA3PD-1.5+ VSWR



electrical schematic



Notes

- Performance and quality attributes and conditions not expressly stated in this specification document are intended to be excluded and do not form a part of this specification document.
- Electrical specifications and performance data contained in this specification document are based on Mini-Circuit's applicable established test performance criteria and measurement instructions.
- The parts covered by this specification document are subject to Mini-Circuits standard limited warranty and terms and conditions (collectively, "Standard Terms"); Purchasers of this part are entitled to the rights and benefits contained therein. For a full statement of the Standard Terms and the exclusive rights and remedies thereunder, please visit Mini-Circuits' website at www.minicircuits.com/WCLStore/terms.jsp

