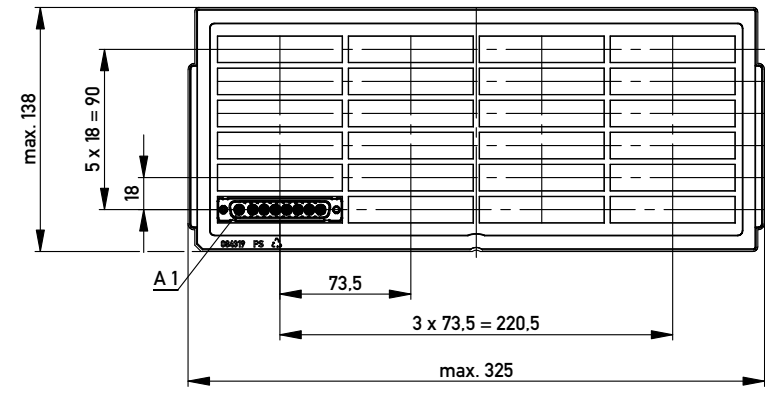
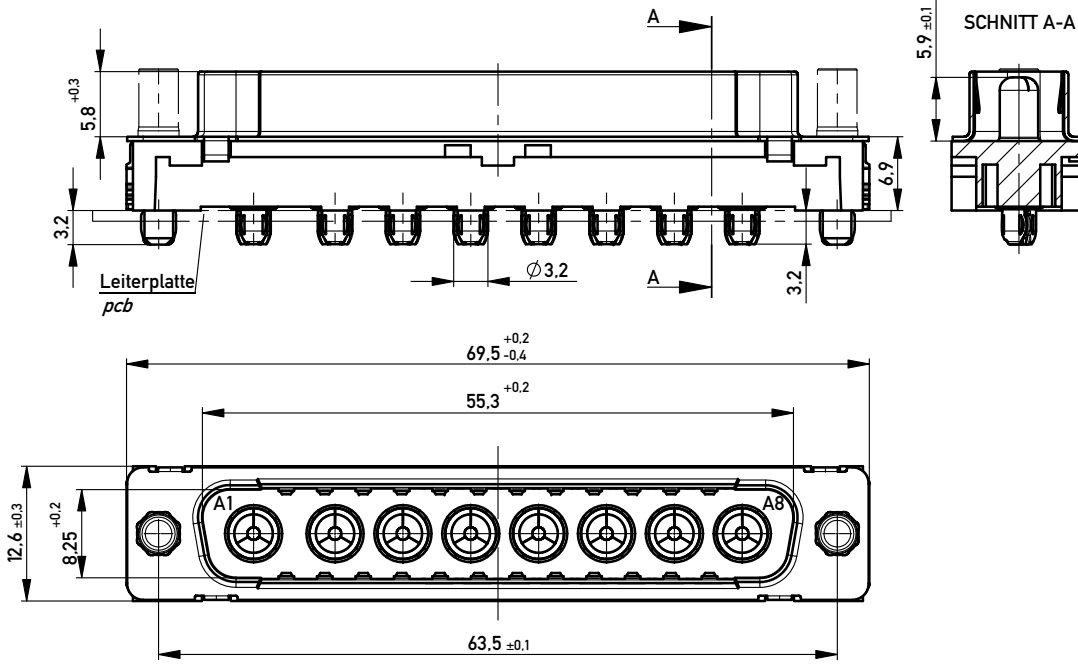
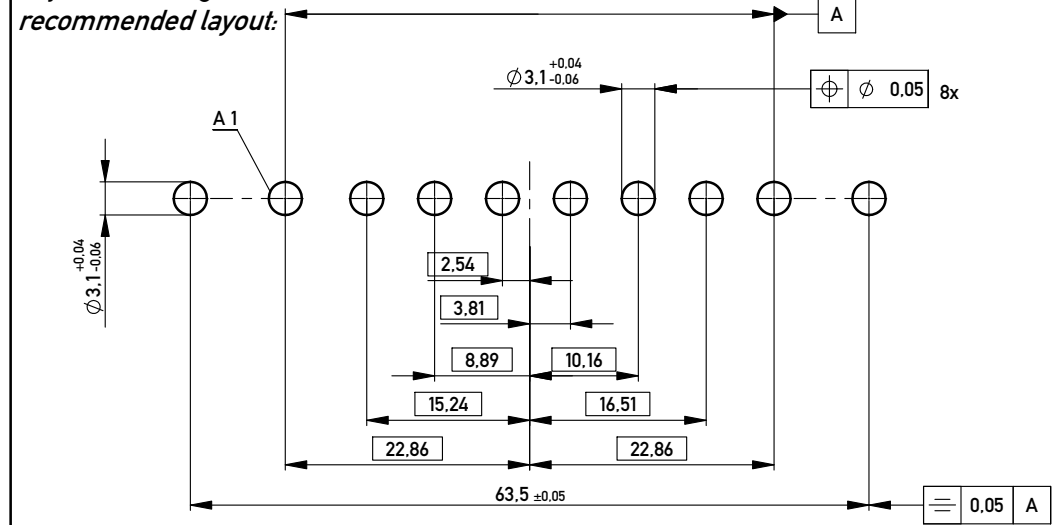


Verpackt in Tray
Verpackungseinheit 24 St.
tray packaging
packaging unit 24 pcs



Sonstige Angaben siehe Zeichnung 204628 / Additional indications according to drawing 204628

Layoutvorschlag:



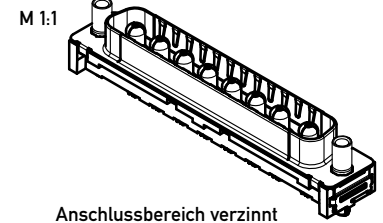
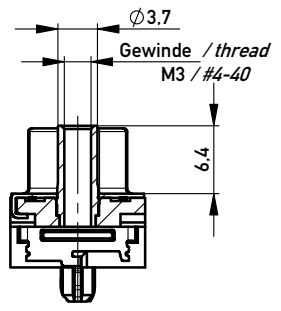
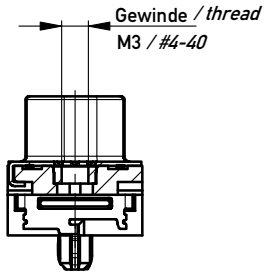
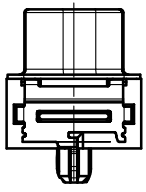
Lochaufbau siehe ERNI-Spezifikation 164062 / hole design according to ERNI-specification 164062

Fehlende Masse und Angaben siehe DIN 41652 / Missing information and dimensions according to DIN 41652
Sonstige Angaben siehe Fertigungsunterlagen / Additional indications according to the production documentation

ohne / without

Mutter / nut
max. Einschraubtiefe 3.7 mm
thread depth max. 3.7 mm

Bolzen / bolt
max. Einschraubtiefe 5.5 mm
thread depth max. 5.5 mm



Anschlussbereich verzinkt
terminal area tin plating

Anforderungsstufe: 2
class: 2

		X			
234000			#4-40		
			M3		
		#4-40			
		M3			
Ident.-Nr. part-no.	ohne without	Mutter thread	Bolzen bolt	Bemerkung remark	

Copyright by ERNI GmbH
Proprietary notice pursuant to ISO 16016 to be observed.

Information:	Tolerances	Scale	2:1
All rights reserved. Only for Information. To ensure that this is the latest version of this drawing, please contact one of the ERNI companies before using.	 All Dimensions in mm	Designation	
		TMC-P 8W8-EE32-6.9-BA8 TMC-P 8W8-EE32-6.9-type 8	
	www.ERNI.com	224823	
c	10.05.2011	I	
Index	Date	A3	
Class		TMCP	