

Technical Data:

Material

- HOUSING: NYLON UL 94 V-0.
- Contact: Brass (Cu Zn) Cu, Tin plated.
- Screw: Steel galvanized and chromated, M2.6

Electrical:

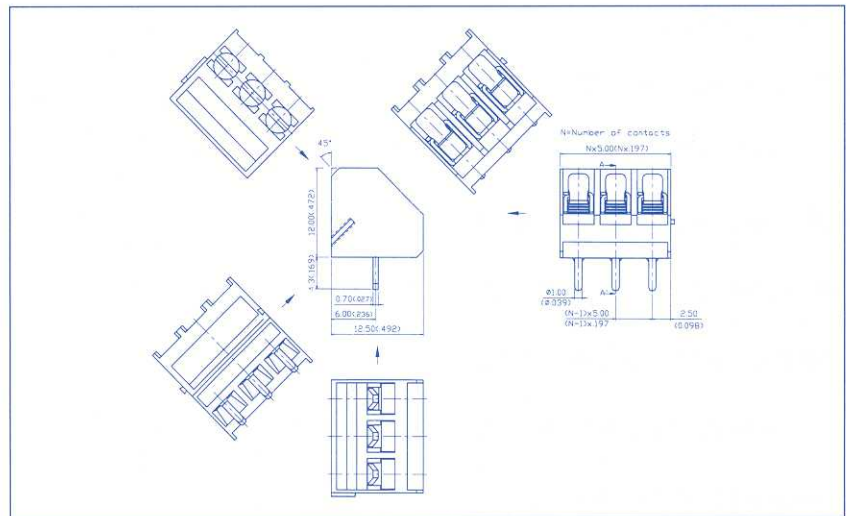
- Current rating: 10 Amps / way max.
- Contact resistance: 20m Ω (Max).
- Insulation resistance: 5000M Ω /1000V.
- Withstanding Voltage: 1500VAC (1min). test time= 60sec/1pcs.
- Operation Voltage: 300 VAC.
- Wire Range: 14-22 AWG.

Mechanical:

- Torque: 4 Kg.cm (Max).
- Operating temperature: -55°C to +105°C
- Solderability: 95 % coverage (min). test temperature= 230°C ± 10°C. test time= 3sec ± 0.5sec.

Application and Features:

- This series of terminal block has a built-in self lift wire guard clamp to protect against wire pinching.
- Standard sizes are 2 and 3 way-block, but every number of contact can be combined, by simply plugging them together and can be ordered as required.
- Since the wire inlet and the screw are in a 45° position, these terminal blocks are designed specifically to solve poor accessibility problems.



Notes: Please replace 'X' with appropriate coding listed in the tables below

3 2 0 - X X X - X X 0 2 - 0 0 X 0

Number of contact

02-24 po	02
	03
	etc.

Pitch

5.00mm/.197"	1
10.00mm/.394"	2

Wire Guard

With	1
------	---

Color

Black	0
Blue	6
Gray	8

Screw Type

" - "	0
" + "	1