



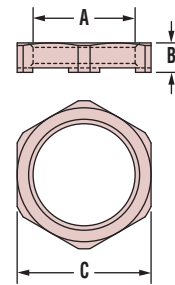
Heyco®-Tite EMC Brass Locknuts

EMC Nickel-Plated Brass

THREAD SIZE A	PART NO.	DESCRIPTION	PART DIMENSIONS			
			B Thickness		C Wrenching Flat Size	
			in.	mm.	in.	mm.
PG Thread						
PG 7	4671	EMC LN PG 7	.13	3,3	.59	15,0
PG 9	4672	EMC LN PG 9	.13	3,3	.71	18,0
PG 11	4673	EMC LN PG 11	.14	3,5	.83	21,0
PG 13.5	4674	EMC LN PG 13.5	.14	3,5	.94	24,0
PG 16	4675	EMC LN PG 16	.14	3,5	1.02	26,0
PG 21	4676	EMC LN PG 21	.16	4,0	1.26	32,0
PG 29	4677	EMC LN PG 29	.18	4,6	1.61	41,0
Metric Thread						
M8 x 1,25	4681	EMC LN M8	.13	3,3	.43	11,0
M10 x 1,5	4682	EMC LN M10	.13	3,3	.51	13,0
M12 x 1,5	4683	EMC LN M12	.14	3,5	.59	15,0
M16 x 1,5	4684	EMC LN M16	.14	3,5	.75	19,0
M20 x 1,5	4685	EMC LN M20	.16	4,0	.94	24,0
M25 x 1,5	4686	EMC LN M25	.16	4,0	1.18	30,0
M32 x 1,5	4687	EMC LN M32	.20	5,0	1.42	36,0



- Ideal for use with painted surfaces to ensure **EMC integrity**.
- Cutting teeth on locknuts provide optimal shield contact with painted surfaces.
- Nickel-plated finish over brass provides excellent corrosion resistance and durability.
- DFARS Compliant



Heyco®-Tite Brass Lazy Bend Liquid Tight Cordgrips

EPDM Nozzle - Metric Hubs

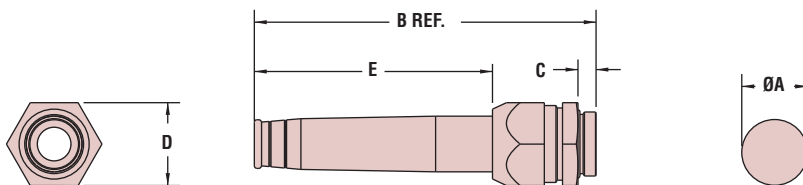
The Ultimate in Liquid Tight Strain Relief Protection

ALL NEW PRODUCTS!



CABLE DIAMETER RANGE				PART NO.	THREAD SIZE	PART DIMENSIONS									
Minimum		Maximum				A Clearance Hole Dia.	B Max. O.A. Length	C Thread Length	D Wrenching Flat Size	E Lazy Bend Nozzle Lg					
in.	mm.	in.	mm.		in.	mm.	in.	mm.	in.	mm.	in.	mm.			
.150	3,8	.189	4,8	14670	M8 x 1.25	.315	8,0	1.69	43,0	.24	6,0	.43	11,0	.98	25,0
.157	4,0	.236	6,0	14671	M10 x 1.5	.394	10,0	2.40	61,0	.24	6,0	.63	16,0	1.38	35,0
.157	4,0	.236	6,0	14672	M12 x 1.5	.472	12,0	2.40	61,0	.24	6,0	.63	16,0	1.38	35,0
.236	6,0	.346	8,8	14673	M16 x 1.5	.630	16,0	2.95	75,0	.24	6,0	.79	20,0	1.77	45,0
.354	9,0	.433	11,0	14674	M20 x 1.5	.787	20,0	3.90	99,0	.24	6,0	.94	24,0	2.56	65,0
.413	10,5	.512	13,0	14675	M20 x 1.5	.787	20,0	4.29	109,0	.24	6,0	.94	24,0	2.87	73,0
.512	13,0	.650	16,5	14676	M25 x 1.5	.984	25,0	5.20	132,0	.28	7,0	1.26	32,0	3.62	92,0

- EPDM Nozzle eases the cable into a lazy bend; prevents sharp bending and assures longest cable and product life.
- Adds reliability, longevity, and safety to your application.
- Protects the lifeline of your electric/electronic products by absorbing the forces of pull, push, twist, and flex.
- Securely anchors, insulates, and protects cables at panel entry points.
- DFARS Compliant



SUGGESTED CLEARANCE HOLE FOR NONTHEADED MOUNTING

Material	Nickel-Plated Brass with NBR Sealing Gland and O-Ring and EPDM Nozzle
Temperature Range	-40°F (-40°C) to 212°F (100°C)
IP Rating	IP 68, IP 69K

Quick Specs