

**FEATURES**

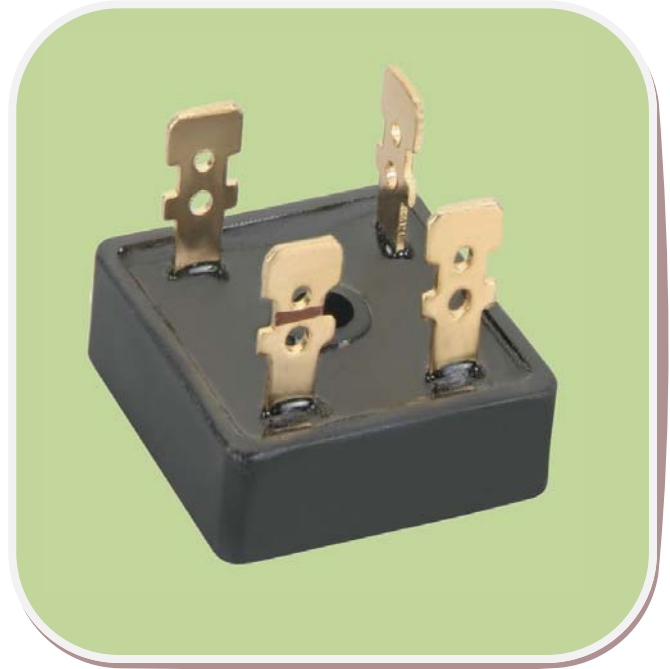
- Reverse voltage upto 1600V
- Epoxy insulated

**TYPICAL APPLICATIONS**

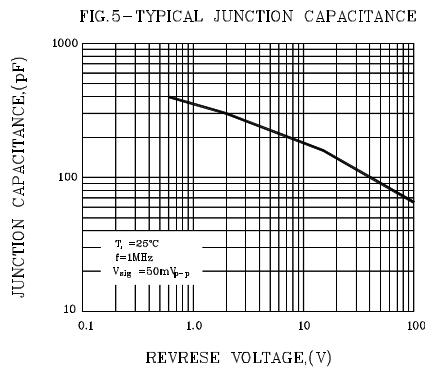
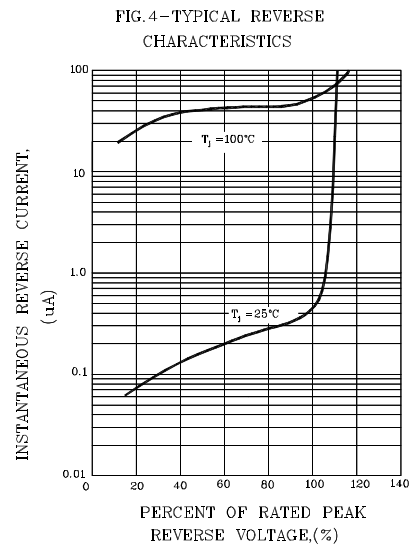
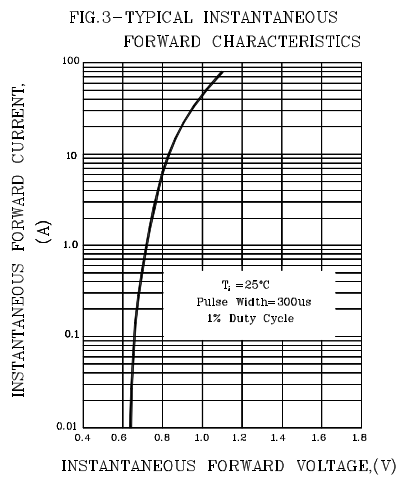
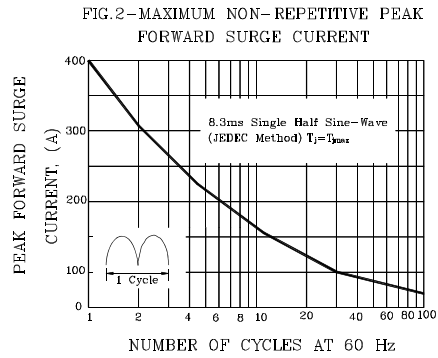
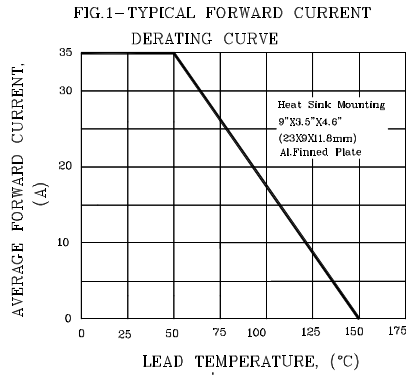
- Internal power supplies for electronic equipments
- DC Power supplies

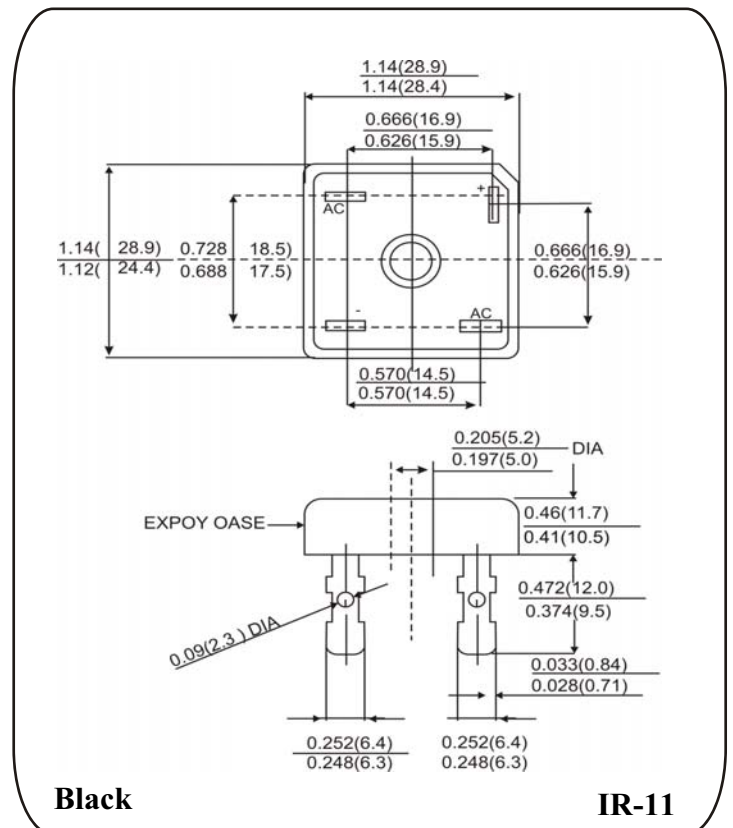
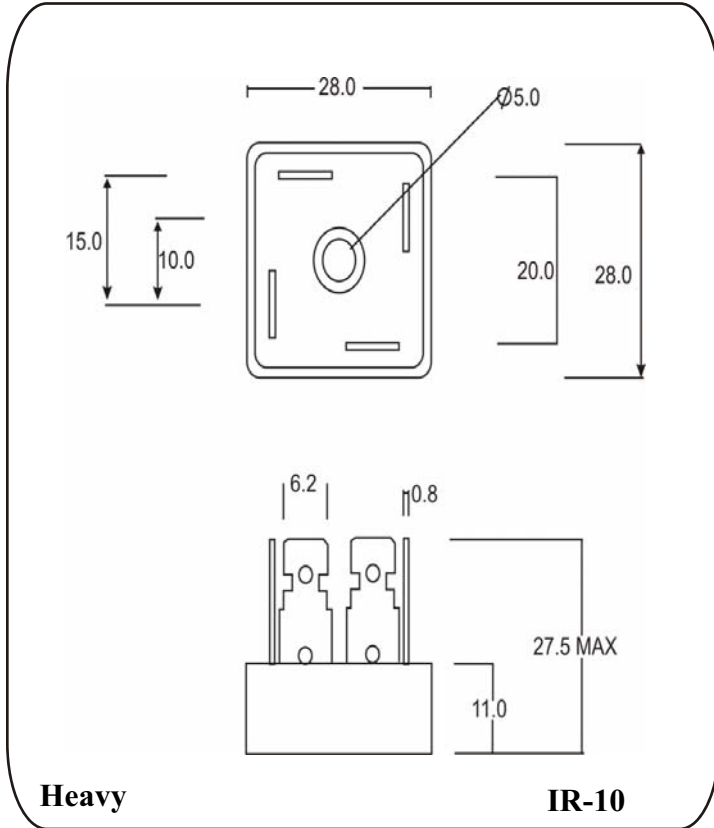
**TECHNICAL DATA**

DEVICE TYPE	$V_{RRM}$ (V)	$V_{RSM}$ (V)
<b>MB50-10</b>	<b>1000</b>	<b>1100</b>
<b>MB50-12</b>	<b>1200</b>	<b>1300</b>
<b>MB50-16</b>	<b>1600</b>	<b>1700</b>

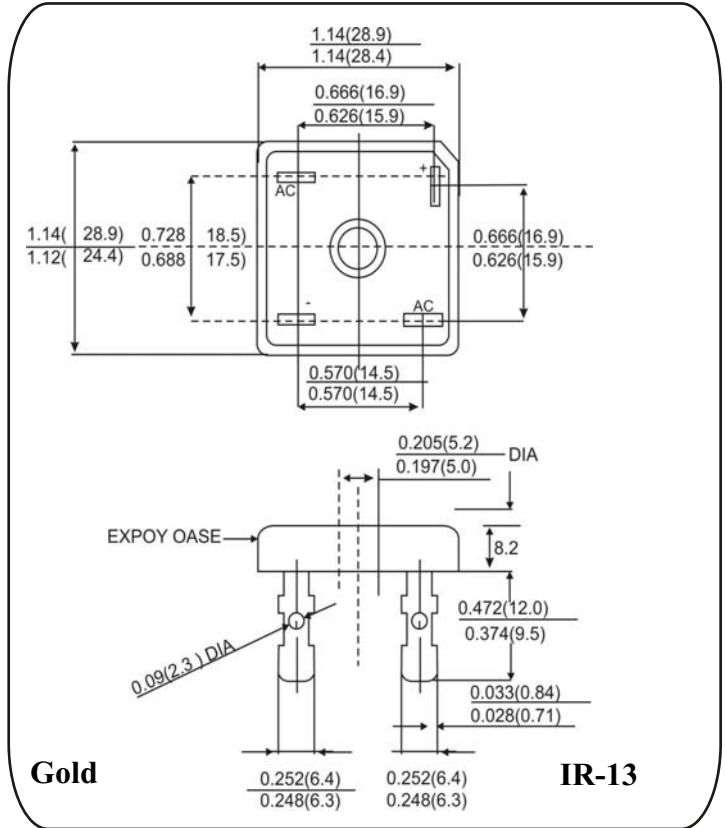
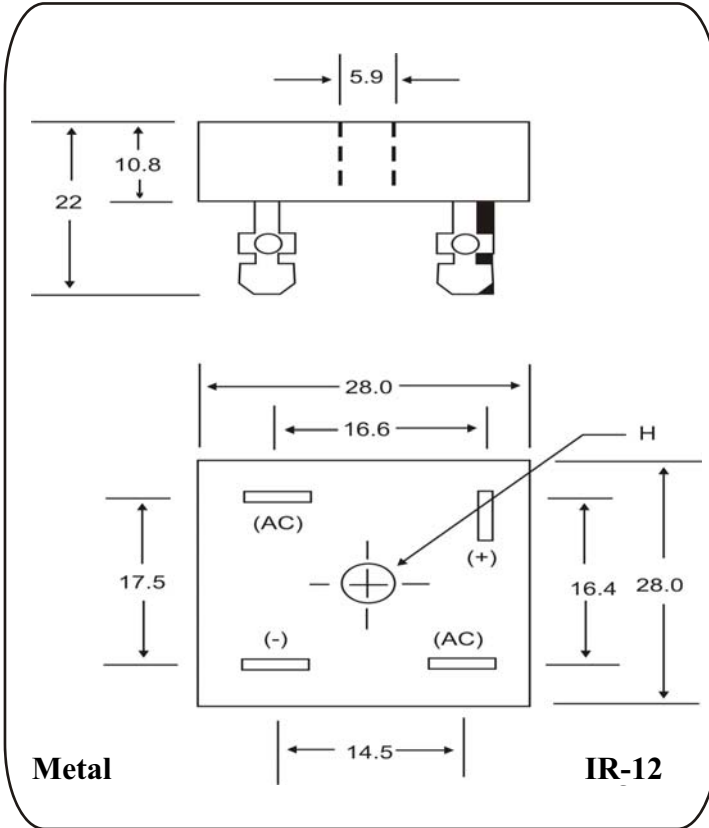


SYMBOL	CONDITIONS	VALUES
$I_{DC}$	$T_{case} = 85^{\circ}C$	50 amp.
$I_{FSM}$ $I^2t$	$T_{vj}=130^{\circ}C$ $T_{vj}=130^{\circ}C$	500 amp. 1250 A <sup>2</sup> S
$I_{RRM}$	$T_{vj}=25^{\circ}C$ $T_{vj}=130^{\circ}C$	1.0mA 7.0mA
$V_F$	$T_{vj}=25^{\circ}C$ ( $I_F=50$ Amp.); max	1.17 V
$V_o$ $R_o$	$T_{vj}=25^{\circ}C$ ( $I_F=25$ Amp.); max	0.85 V 5 mA
$R_{th(j-c)}$ $T_{vj}$ $T_{stg}$		1.1 $^{\circ}C/W$ 125 $^{\circ}C$ 125 $^{\circ}C$
Mounting torque		2.5 Nm
Weight	Approx.	20 gm
$V_{isol}$	A.C. 50hz r.m.s Duration 1 min	2500 V
Package Outline		IR-10,IR-11,IR-12,IR-13





**PACKAGE OUTLINE**



All dimensions are in mm.

**Insel Rectifiers (India) Pvt. Ltd.**

(An ISO 9001:2015, ISO 14001:2015 Certified Company)

Plot No 151, Udyog Kendra, Extn.-II, Ecotech-III, Greater Noida-201306

Toll Free No.: 1800 3070 9989, Fax : 011-27491404

E-mail : [insel@rectifierindia.com](mailto:insel@rectifierindia.com), [sales@rectifierindia.com](mailto:sales@rectifierindia.com)