

RL-5900

HIGH VOLTAGE POWER LINE INDUCTOR

DESCRIPTION

- High Voltage
- Power Line Inductors

ENVIRONMENTAL DATA

- Storage temperature range: -55°C to +130°C
- Operating temperature range: -40°C to +130°C

PACKAGING INFORMATION

- Packaging information: pg. 495

FEATURES & APPLICATIONS

- 49 standard values to choose from
- Inductance range from 10 μ H to 100 mH with saturation currents available from 0.095 A to 9.6 A
- Ideal for high voltage applications up to 3,000 VAC
- Typical applications include: surge suppression, power amplifiers, power supplies, SCR and TRIAC controls, smoothing choke and line filters

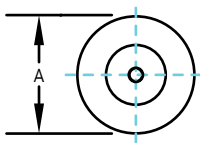
Verify operation with sample in actual circuit. Order samples at www.rencousa.com.

MECHANICAL DIMENSIONS

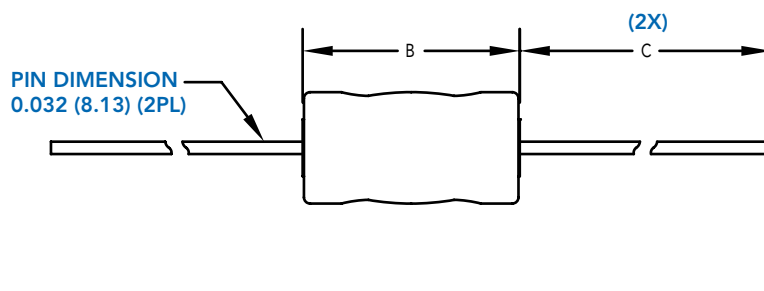
U.S. Standard (mm)

PART NUMBER	A (MAX.)	B (MAX.)	C (MIN.)	PART WEIGHT
RL-5900	0.550 (13.97)	1.000 (25.40)	1.000 (25.40)	13.0g (0.46oz)

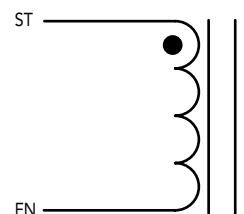
FRONT VIEW



SIDE VIEW



SCHEMATIC



RENCO ELECTRONICS INC.

595 International Place, Rockledge, FL 32955-4200 USA • www.rencousa.com • ISO 9001 Certified
Toll Free Engineering Hot Line: 800.645.5828 • P: 321.637.1000 • F: 321.637.1600



RL-5900

Renco Part No. RL-5900	Inductance (μ H)	DCR Max. (Ohms)	Isat (A)	Irms (A)
RL-5900-10	10.0	0.014	9.600	4.700
RL-5900-12	12.0	0.016	8.600	4.700
RL-5900-15	15.0	0.017	7.700	4.700
RL-5900-18	18.0	0.020	7.200	4.700
RL-5900-22	22.0	0.022	6.400	4.700
RL-5900-27	27.0	0.024	5.800	4.700
RL-5900-33	33.0	0.027	5.300	4.700
RL-5900-39	39.0	0.029	5.200	4.700
RL-5900-47	47.0	0.032	4.400	4.700
RL-5900-56	56.0	0.046	4.100	3.800
RL-5900-68	68.0	0.055	3.800	3.800
RL-5900-82	82.0	0.072	3.400	3.000
RL-5900-100	100.0	0.085	3.000	2.300
RL-5900-120	120.0	0.100	2.800	2.300
RL-5900-150	150.0	0.110	2.500	2.300
RL-5900-180	180.0	0.130	2.300	2.300
RL-5900-220	220.0	0.170	2.100	2.000
RL-5900-270	270.0	0.225	1.900	1.400
RL-5900-330	330.0	0.240	1.700	1.400
RL-5900-390	390.0	0.285	1.400	1.400
RL-5900-470	470.0	0.375	1.200	1.200
RL-5900-560	560.0	0.480	1.500	0.900
RL-5900-680	680.0	0.570	1.100	0.900
RL-5900-820	820.0	0.640	1.000	0.900
RL-5900-1000	1000.0	0.840	0.910	0.750
RL-5900-1200	1200.0	1.000	0.840	0.750
RL-5900-1500	1500.0	1.170	0.760	0.750
RL-5900-1800	1800.0	1.450	0.730	0.590
RL-5900-2200	2200.0	1.700	0.680	0.590
RL-5900-2700	2700.0	2.300	0.560	0.450
RL-5900-3300	3300.0	3.150	0.530	0.350
RL-5900-3900	3900.0	3.800	0.510	0.350
RL-5900-4700	4700.0	4.100	0.470	0.350
RL-5900-5600	5600.0	5.000	0.440	0.270
RL-5900-6800	6800.0	5.700	0.410	0.270

Renco Part No. RL-5900	Inductance (μ H)	DCR Max. (Ohms)	Isat (A)	Irms (A)
RL-5900-8200	8200.0	7.75	0.370	0.200
RL-5900-10000	10000.0	8.80	0.340	0.200
RL-5900-12000	12000.0	10.30	0.320	0.200
RL-5900-15000	15000.0	13.45	0.250	0.160
RL-5900-18000	18000.0	15.10	0.230	0.160
RL-5900-22000	22000.0	20.00	0.210	0.120
RL-5900-27000	27000.0	26.50	0.185	0.095
RL-5900-33000	33000.0	30.00	0.175	0.095
RL-5900-39000	39000.0	44.00	0.160	0.070
RL-5900-47000	47000.0	48.00	0.148	0.070
RL-5900-56000	56000.0	53.00	0.135	0.070
RL-5900-68000	68000.0	60.00	0.125	0.070
RL-5900-82000	82000.0	67.00	0.110	0.070
RL-5900-100,000	100000.0	90.00	0.095	0.060

NOTES:

1. INDUCTANCE $\pm 10\%$ TESTED AT 10 kHz, 0.1 Vrms
2. Isat - DC CURRENT THAT WILL CAUSE INDUCTANCE TO DROP BY 5%
3. Iirms - CURRENT THAT CAUSES THE TEMPERATURE TO RISE APPROX. 40°C ABOVE AMBIENT OF 25°C
4. ELECTRICAL SPECIFICATIONS MEASURED AT 25°C
5. OPTIONAL 5% TOLERANCE
6. CLASS B 130°C RATED
7. NONSTANDARD VALUES AVAILABLE
8. COIL FINISHED WITH POLYOLEFIN SLEEVING

