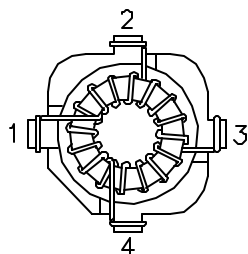
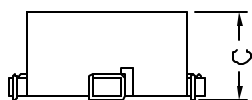
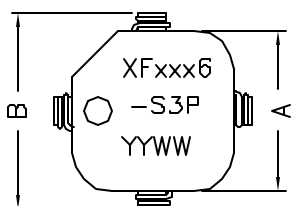


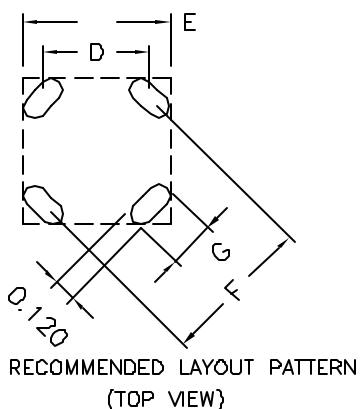
## XFSD3 SERIES INDUCTORS

- \* TRUE SURFACE MOUNT DESIGN
- \* ECONOMICAL, LOW COST SOLUTION TO YOUR POWER REQUIREMENTS
- \* CUSTOM VERSIONS AVAILABLE AT NO EXTRA COST
- \* TAPE AND REEL PACKAGING AVAILABLE, 250 PCS PER 13" REEL
- \* VERSATILE DUAL WINDING DESIGN, USE AS HIGH CURRENT CHOKE OR ONE(1) TO ONE (1) TRANSFORMER
- \* CONSTANT INDUCTANCE UP TO 1.0 MHZ
- \* Flamability Rating: UL94V-0

### Mechanical Dimensions:

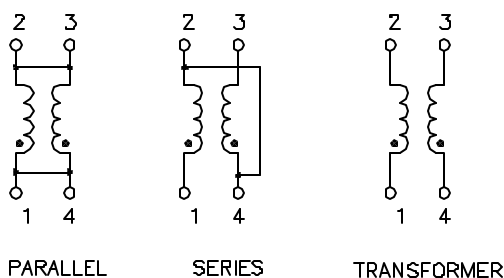


BOTTOM VIEW



RECOMMENDED LAYOUT PATTERN (TOP VIEW)

### Schematic:



PARALLEL      SERIES      TRANSFORMER

CASE SIZE	LAYOUT DIMENSIONS			
	D	E	F	G
XF	.400	.470	.570	.145
1XF	.400	.470	.570	.145
2XF	.495	.570	.700	.160
5XF	.495	.570	.700	.160

TOLERANCE:  
 .xxx ±0.010  
 Dimensions in Inch

Part Number	PARALLEL RATINGS			SERIES RATINGS			A	B	C (MAX)
	INDUCTANCE uH	CURRENT ADC	DCR Ohms	INDUCTANCE uH	CURRENT ADC	DCR Ohms			
XF0106-S3P	10	2.00	0.38	40	1.00	0.150	0.530	0.700	0.290
XF0506-S3P	50	0.750	0.300	200	0.366	1.20	0.530	0.700	0.290
XF1006-S3P	100	0.500	0.375	400	0.250	1.50	0.530	0.700	0.290
1XF0106-S3P	10	2.500	0.040	40	1.250	0.160	0.530	0.700	0.290
1XF0506-S3P	50	1.020	0.180	200	0.510	0.720	0.530	0.700	0.290
1XF1006-S3P	100	0.730	0.375	400	0.365	1.500	0.530	0.700	0.290
2XF0106-S3P	10	3.000	0.038	40	1.500	0.150	0.630	0.825	0.310
2XF0506-S3P	50	0.950	0.350	200	0.475	1.400	0.630	0.825	0.310
2XF1006-S3P	100	0.670	0.375	400	0.335	1.500	0.630	0.825	0.310
5XF0506-S3P	50	1.350	0.090	200	0.675	0.360	0.630	0.825	0.310
5XF1006-S3P	100	0.950	0.175	400	0.475	0.700	0.630	0.825	0.310