

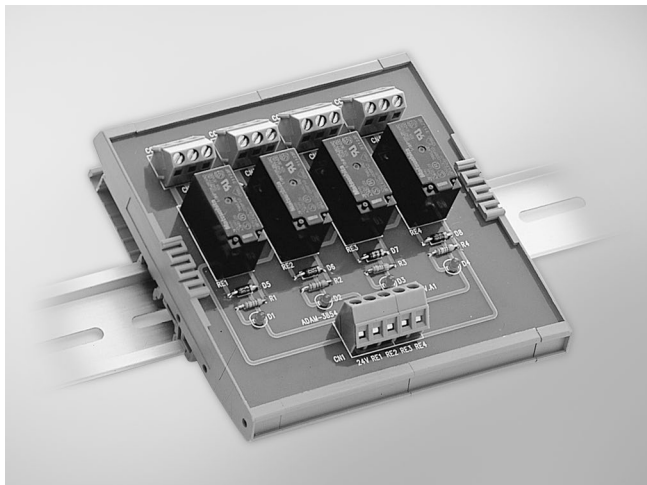
ADAM-3854

ADAM-3864

4-ch Power Relay Module

4-ch Solid State Digital I/O Module

Carrier Backplane



ADAM-3854

Features

- High power relays can handle up to 5 A @ 250 V_{AC} and 5 A @ 30 V_{DC}
- 4 single-pole double-throw (SPDT) relays
- Industrial screw terminals for easy output wiring
- LED status indicators
- Onboard varistor protects relay contact points
- DIN-rail mounting

Specifications

I/O

- **Channels** 4
- **Contact Rating** 250 V_{AC} @ 5 A
30 V_{DC} @ 5 A
- **Contact Resistance** 100 mΩ
- **Operation Time** 15 ms max.
- **Relay Type** SPDT (Form C)
- **Release Time** 5 ms max.
- **Life Expectancy** 1.7 x 10⁵ at rated load

Varistor

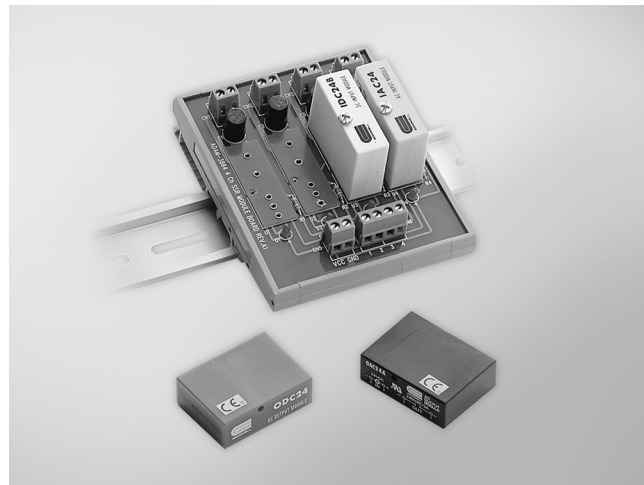
- **Clamping Voltage** 760 V (10 A)
- **Max. Applied Voltage** 300 V_{RMS}
- **Max. Peak Current** 1,200 A for 8 ms
- **Varistor Voltage** 470 V (current = 1 mA)

General

- **Connectors** Screw terminals
- **Dimensions (L x W x H)** 112.5 x 118.4 x 46 mm (4.43" x 4.66" x 1.81")
- **LED Indicators** Status displayed for each relay
- **Mounting** DIN-rail
- **Power Consumption** 2.2 W
- **Power Input** 24 V_{DC}

Ordering Information

- **ADAM-3854** 4-ch DIN-rail Power Relay Module



ADAM-3864

Features

- 2,500 V_{RMS} optical isolation
- LED status indicators
- Onboard fuse protection
- DIN-rail mounting

Specifications

Input Modules

Field Side:

- **Input On/Off Voltage** IAC24A series: 180 ~ 280 V/80 V_{RMS}
Range IDC24B series: 3 ~ 32 V/1 V_{DC}
- **Input Resistance** IAC24A series: 44 kΩ
IDC24B series: 1.5 kΩ

Logic Side:

- **Breakdown Voltage** 30 V_{DC}
- **Output Current** 100 mA max.
- **Output Voltage Drop** 0.4 V max.
- **Supply Current** 12 mA max.
- **Supply Voltage** 24 V_{DC}

Output Modules

Field Side:

- **Contact Voltage Drop** 1.6 V max.
- **Current Rating** 3 A max. (@ 25°C)

Logic Side:

- **Input Resistance** 220 Ω
- **Supply Current** 12 mA max.
- **Supply Voltage** 24 V

General

- **Dimensions (L x H x W)** 118.4 x 90 x 59 mm (4.66" x 3.54" x 2.32")
- **Mounting** DIN-rail

Ordering Information

- **ADAM-3864** 4-ch Solid State Module Carrier Backplane
- **OAC24A** AC Output Module (24-280 V_{AC}, 3 A)
- **ODC24** DC Output Module (5-60 V_{DC}, 3 A)
- **PCLM-ODC5** Single Piece DC SSR Module (60 V_{DC}, 3 A)
- **IAC24A** AC Input Module (180-280 V_{AC})
- **IDC24B** DC Input Module (3-32 V_{DC})