



BOURNS®

Features

- Formerly J. W. Miller® model
- Current rating up to 200 mA
- Inductance range: 100 μ H to 15,000 μ H
- High Q
- RoHS compliant*

Applications

- DC/DC converters
- Power supplies
- Desktop notebooks
- Output chokes

RL262 Series - Radial Lead RF Choke

Electrical Specifications (@ 25 °C)

| Part Number | Inductance (μ H) | Tol. | Q (Min.) | Test Frequency | | SRF (MHz) Typ. | DCR (Ω) Max. | I dc (mA) |
|---------------|-----------------------|-----------|----------|----------------|----------|----------------|-----------------------|-----------|
| | | | | L | Q | | | |
| RL262-101J-RC | 100 | $\pm 5\%$ | 60 | 796 KHz | 796 KHz | 6.1 | 2.0 | 200 |
| RL262-121J-RC | 120 | $\pm 5\%$ | 60 | 796 KHz | 796 KHz | 5.5 | 3.0 | 200 |
| RL262-151J-RC | 150 | $\pm 5\%$ | 60 | 796 KHz | 796 KHz | 5.0 | 2.0 | 200 |
| RL262-181J-RC | 180 | $\pm 5\%$ | 60 | 796 KHz | 796 KHz | 4.7 | 3.0 | 200 |
| RL262-221J-RC | 220 | $\pm 5\%$ | 60 | 796 KHz | 796 KHz | 4.5 | 3.0 | 150 |
| RL262-271J-RC | 270 | $\pm 5\%$ | 60 | 796 KHz | 796 KHz | 4.1 | 3.0 | 150 |
| RL262-331J-RC | 330 | $\pm 5\%$ | 60 | 796 KHz | 796 KHz | 3.8 | 4.0 | 150 |
| RL262-391J-RC | 390 | $\pm 5\%$ | 60 | 796 KHz | 796 KHz | 3.5 | 4.0 | 100 |
| RL262-471J-RC | 470 | $\pm 5\%$ | 60 | 796 KHz | 796 KHz | 3.2 | 5.0 | 100 |
| RL262-561J-RC | 560 | $\pm 5\%$ | 60 | 796 KHz | 796 KHz | 2.9 | 6.0 | 100 |
| RL262-681J-RC | 680 | $\pm 5\%$ | 60 | 796 KHz | 796 KHz | 2.7 | 6.0 | 100 |
| RL262-821J-RC | 820 | $\pm 5\%$ | 60 | 796 KHz | 796 KHz | 2.3 | 7.0 | 50 |
| RL262-102J-RC | 1000 | $\pm 5\%$ | 80 | 252 KHz | 252 KHz | 2.1 | 9.0 | 50 |
| RL262-122J-RC | 1200 | $\pm 5\%$ | 80 | 252 KHz | 252 KHz | 1.9 | 9.0 | 50 |
| RL262-152J-RC | 1500 | $\pm 5\%$ | 80 | 252 KHz | 252 KHz | 1.8 | 11 | 50 |
| RL262-182J-RC | 1800 | $\pm 5\%$ | 80 | 252 KHz | 252 KHz | 1.6 | 12 | 50 |
| RL262-222J-RC | 2200 | $\pm 5\%$ | 80 | 252 KHz | 252 KHz | 1.5 | 14 | 50 |
| RL262-272J-RC | 2700 | $\pm 5\%$ | 80 | 252 KHz | 252 KHz | 1.4 | 15 | 50 |
| RL262-332J-RC | 3300 | $\pm 5\%$ | 80 | 252 KHz | 252 KHz | 0.9 | 25 | 40 |
| RL262-392J-RC | 3900 | $\pm 5\%$ | 80 | 252 KHz | 252 KHz | 0.9 | 30 | 40 |
| RL262-472J-RC | 4700 | $\pm 5\%$ | 80 | 252 KHz | 252 KHz | 0.8 | 32 | 40 |
| RL262-562J-RC | 5600 | $\pm 5\%$ | 80 | 252 KHz | 252 KHz | 0.7 | 36 | 30 |
| RL262-682J-RC | 6800 | $\pm 5\%$ | 80 | 252 KHz | 252 KHz | 0.7 | 40 | 30 |
| RL262-822J-RC | 8200 | $\pm 5\%$ | 80 | 252 KHz | 252 KHz | 0.6 | 45 | 30 |
| RL262-103J-RC | 10,000 | $\pm 5\%$ | 60 | 79.6 KHz | 79.6 KHz | 0.6 | 55 | 20 |
| RL262-123J-RC | 12,000 | $\pm 5\%$ | 60 | 79.6 KHz | 79.6 KHz | 0.5 | 65 | 20 |
| RL262-153J-RC | 15,000 | $\pm 5\%$ | 60 | 79.6 KHz | 79.6 KHz | 0.5 | 80 | 20 |

General Specifications

Rated Current..... Inductance drop 10 %
 Operating Temperature-55 °C to +105 °C
 Storage Temperature-55 °C to +105 °C

Materials

Core Material..... Ferrite
 Wire Enameled copper
 Terminal Coating..... Sn

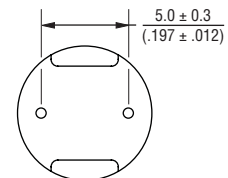
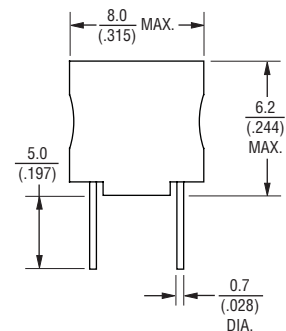
Marking

..... Value code on side of inductor

Packaging

Standard..... 100 pcs. per bag

Product Dimensions



DIMENSIONS: $\frac{\text{MM}}{\text{(INCHES)}}$

How To Order

RL262 - 102J - RC

Model _____
 Value/Tolerance Code (see table) _____
 Compliance Code _____
 RC = RoHS Compliant

Example:
 RL262-102J-RC = 1000 μ H, $\pm 5\%$

Electrical Schematic

