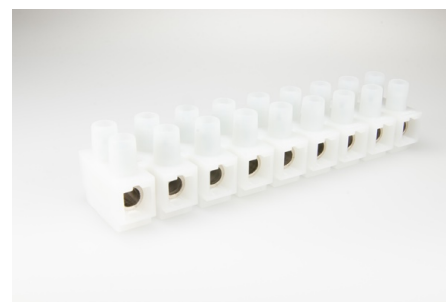




Screw Connectors

2000 K/ 9

Terminal Block, 9 pole, Insulating Material: PA 6, Cross-Section: 16.0 mm², Pin Spacing: 14.5 mm, Fixing: Screw, Voltage Rating: 500 V, Current Rating: 76 A



Order Info

Reference Number (ref. no.)	128609
Applications	Installation, Electrical Appliances, Transformers
PU	20

Type

Type	Terminal Block
Number of poles	9 pole
Clamping Units per Pole	1
Colour	natural
Cross-Section	16.0 mm ²
Connection Type	Screw

Technical Data

Voltage Rating	500 V
Current Rating	76 A
Insulating Material	PA 6
Contact Material	Brass
Core Cross-Section min.	0.5 mm ²
Core Cross-Section max.	16.0 mm ²
Flammability Rating	V-2
max. Ambient Temperature Operation	85 °C
Type of Conductor Solid	yes
Type of Conductor Flexible	yes
Type of Conductor Stranded	yes
Stripping Length	10.0-10.5 mm
Assembly Contact Screw	1.0x5.5 / ⌀ 2.0 Nm
Pin Spacing	14.5 mm
Fixing	Screw
Approbation EN60998	2000_EN60998_20070823_20160412_VDE_ENEC_40021892_web.p
Approbation UL	1500_2000_19890315_20170213_UL_E63492_1-08_Description_we
Approbation CSA	Schraub_Steck_Schraubenlos_SI_Klemmen_20160429_CSA_700765

Accessories

ZEL 110

196420
