

NOTES:

ELECTRICAL:

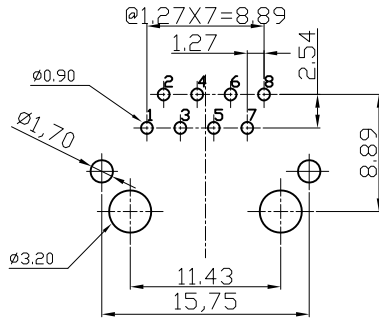
- 1. VOLTAGE RATING : 125 VAC RMS.
- 2. CURRENT RATING : 1.5 AMP.
- 3. CONTACT RESISTANCE : 35 MILLIOHMS MAX.
- 4. INSULATION RESISTANCE : 1000 MEGOHMS @ 500 VDC. MIN.
- 5. DIELECTRIC STRENGTH : 1000 VAC RMS 60Hz, 1MIN.

MECHANICAL:

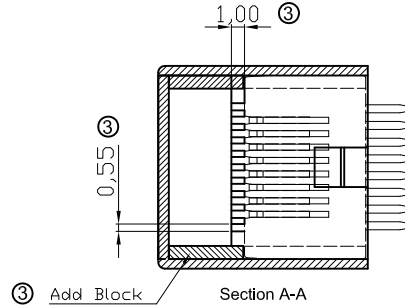
- 1. HOUSING MATERIAL : HIGH TEMP. UL94V-0.
- 2. CONTACT MATERIAL : PHOSPHOR BRONZE T=0.35mm.
- 3. SHIELD MATERIAL : COPPER ALLOY T=0.20mm.
- 4. PLATING : 50u" SELECTIVE GOLD PLATING OVER NICKEL.
- 5. OPERATING LIFE : 750 CYCLES MIN.
- 6. PCB RETENTION PRE-SOLDER : 1 LB MIN.
- 7. PCB RETENTION POST-SOLDER : 10 LBS MIN.

ENVIRONMENTAL:

- 1. STORAGE : -40°C TO +85°C
- 2. OPERATION : -40°C TO +85°C.



PC Board Layout



Section A-A

CATEGORY 6 CHARACTERISTIC:

| Frequency | Near-End Cross Talk | Return Loss | Attenuation |
|-----------|---------------------|-------------|-------------|
|           | dB, MIN.            | dB, MIN.    | dB, MAX.    |
| 1.0 MHZ   | 75.0                | 35.5        | 0.1         |
| 4.0 MHZ   | 75.0                | 35.5        | 0.1         |
| 10.0 MHZ  | 74.0                | 35.5        | 0.1         |
| 16.0 MHZ  | 69.9                | 35.5        | 0.1         |
| 25.0 MHZ  | 66.0                | 35.5        | 0.1         |
| 31.25 MHZ | 64.1                | 34.1        | 0.1         |
| 62.5 MHZ  | 58.1                | 28.1        | 0.1         |
| 100.0 MHZ | 54.0                | 24.0        | 0.2         |
| 200.0 MHZ | 48.0                | 18.0        | 0.3         |
| 250.0 MHZ | 46.0                | 16.0        | 0.3         |

RoHS compliant



File No.: E345352

| Scale     | Free  |     |               |            |        |          | Date       | Name    | Customer-No.                          |
|-----------|-------|-----|---------------|------------|--------|----------|------------|---------|---------------------------------------|
| TOLERANCE |       |     |               |            |        |          | 14.01.2004 | A.Menk  |                                       |
| .X        | ±0.20 |     |               |            |        |          | 08.09.2009 | Hellwig | ASSMANN WSW-No.<br>AMJ-188-10101-CAT6 |
| .XX       | ±0.15 | ④   | Add UL No     | 21.02.2013 | Fancy  | Approved |            |         | Drawing-No.                           |
| .XXX      | ±0.10 | ③   | Modify design | 08.09.2009 | Dean   |          |            |         | ASS 1571 CO                           |
| DIM       | TOL   | ②   | Update        | 06.07.2009 | Dean   |          |            |         | rev04                                 |
| Angle     | ±5°   | ①   | Drawn         | 14.01.2004 | A.Menk |          |            |         | Sheet                                 |
|           |       | Id. | Modification  | Date       | Name   |          |            |         |                                       |



1

2

3

4

5

6

7