

PIC-M02508 Permanent Magnet

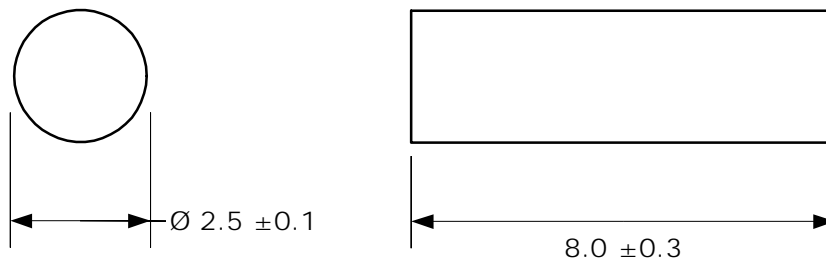
Data

Material	Alnico 500	
Orientation	axially	
Remanence Br	mT	1281
Coercivity HcB	kA/m	50
Coercivity HcJ	kA/m	52
Energy Product (BH) max.	kJ/m ³	40
Magnetic Moment M	x10 ⁻⁵ Vs cm	0.26
Operating Temperature max.	°C	500
Curie Temperature Tc	°C	890
Temperature Coefficient Tk(Br)	%/°C	-0.02
Density	g/cm ³	7.3

Nominal values unless otherwise specified

Dimensions

in mm



Customized types available.