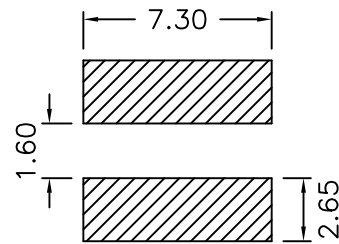
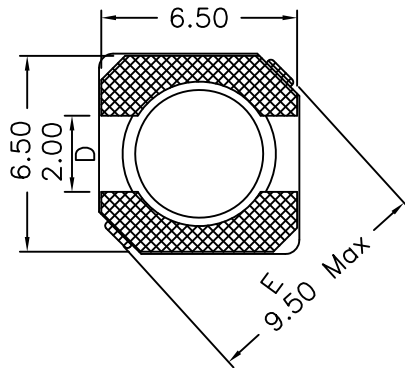
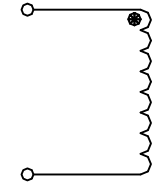
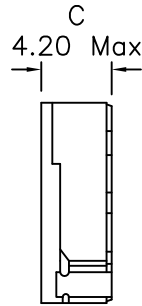
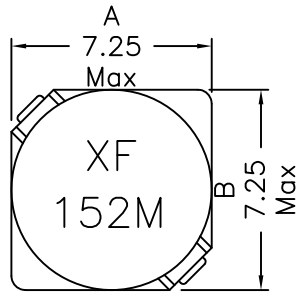


### 1. Mechanical Dimensions:



Suggested PCB Layout

### 2. Schematic:

### 3. Electrical Specification: @25C

OCL: 1500uH±20% @100KHz, 0.1V

Q: 5 Min @10KHz, 0.1V

DCR: 7.8 Ohms Max

IDC: 0.14A drop 30% based on OCL

SRF: 1.0 MHz Min

#### Notes:

1. Solderability: Leads shall meet MIL-STD-202G, Method 208H for solderability.
2. Flammability: UL94V-0
3. ASTM oxygen index: > 28%
4. Insulation System: Class F 155°C. UL file E151556
5. Operating Temperature Range: All listed parameters are to be within tolerance from -40°C to +105°C
6. Storage Temperature Range: -55°C to +125°C
7. Aqueous wash compatible
8. SMD Lead Coplanarity: ±0.004"(0.102mm)
9. Electrical and mechanical specifications 100% tested
10. RoHS Compliant Component

DOC. REV: A/3

<b>XFMRs Inc.</b> <a href="http://www.XFMRS.com">www.XFMRS.com</a>	Title: INDUCTOR		
	UNLESS OTHERWISE SPECIFIED	P/N: XFTPRH6D38-152M	REV. A
TOLERANCES:	DWN.	Yuan	Oct-27-15
.xx ±0.25	CHK.	YK Liao	Oct-27-15
Dimensions in mm	APP.	GL	Oct-27-15
SHEET 1 OF 1			

**PROPRIETARY**

Document is the property of XFMRs Group & is not allowed to be duplicated without authorization.