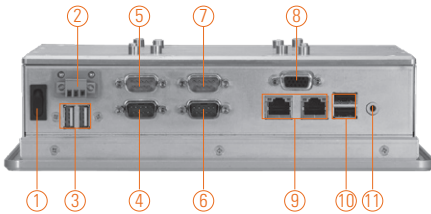
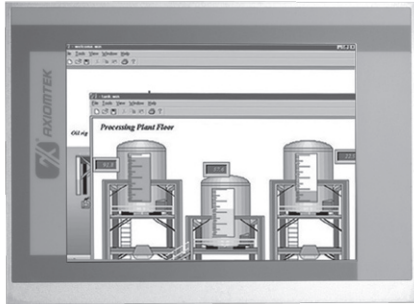


GOT3846T-832

8.4" SVGA TFT Fanless Touch Panel
Computer with Intel® Atom™ Processor
(-20°C +55°C)



- | | |
|---------------------------|----------------------|
| 1. Power switch | 6. COM 2 (RS-232) |
| 2. DC power input | 7. COM 4 (RS-232) |
| 3. USB 2.0 x 2 | 8. VGA |
| 4. COM 1 (RS-232/422/485) | 9. Ethernet x 2 |
| 5. COM 3 (RS-232) | 10. USB 2.0 x 2 |
| | 11. Audio (Line-out) |



Introduction

The GOT3846T-832 is the 8.4" fanless touch panel computer. By supporting a wide temperature range from -20°C ~ +55°C, it is especially designed for harsh environments. The GOT3846T-832 adopts a modern, super sleek fanless design, is equipped with a 8.4" TFT LCD, and low power consumption Intel processor. In response to customer's requests for wireless applications, the GOT3846T-832 has a Mini card slot and an optional fixed rotational WLAN antenna for wireless network connection. By just plugging in the Mini card WLAN card, customers have instant access wireless LAN. The GOT3846T-832 is used extensively for variety of industry needs including transportation, packing field surveillance, building automation, and more.

Wide-temperature (-20°C ~ +55°C) supported

The GOT3846T-832 adopts unique extended temperature technology, with a temperature range from -20°C ~ +55°C, with a fanless cooling system and compact design for harsh environments.

WLAN antenna supported (optional)

The GOT3846T-832 provides a Mini card slot and an optional fixed rotational WLAN antenna for wireless network connections. By simply plugging in the wireless LAN card, customers can use the unit in a wireless environment.

Anti-vibration up to 1G

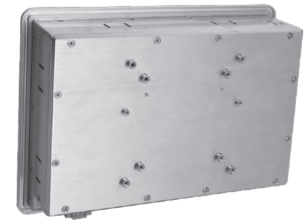
With a special vibration-resistant design patent, GOT3846T-832 can work well under 1G (5-500Hz) in operation mode, and equipped with a 2.5" HDD.

Features

- 8.4" SVGA (800 x 600) color TFT LCD display
- Fanless design with Intel® Atom™ processor N2600 1.6 GHz
- Supports wide temperature range of -20°C ~ +55°C
- Aluminum front bezel & chassis
- Supports WLAN module & external antenna
- Supports 4 USB 2.0 & 4 COM ports
- Supports panel mount, wall mount, VESA arm, desktop stand



▲ Side view



▲ Rear view

Specifications

Front Bezel	IP65, NEMA 4 rugged protection, aluminum front bezel	
LCD Panel	Display Type	8.4" SVGA TFT LCD
	Brightness (cd/m ²)	450 nits
	Resolution	800 x 600
	View Angle (H/V)	160°/140°
Main System	CPU	Intel® Atom™ processor N2600 1.6 GHz
	Chipset	Intel® NM10 Express
	System Memory	1 x 204-pin DDR3 800 SO-DIMM max. up to 2 GB
	BIOS	AMI 8 Mbit with RPL/PXE LAN boot Rom
	Storage	1 x 2.5" SATA HDD 1 x CompactFlash™ (optional)
	Watchdog Timer	255 levels, 0-255 sec.
	Onboard Graphics	Integrated Intel® GFX
I/O Connector	3 x RS-232 (COM 2/3/4) 1 x RS-232/422/485 (COM 1) 1 x VGA 1 x Audio (Line-out) 4 x USB 2.0 2 x 10/100/1000Mbps Ethernet	

* All specifications and photos are subject to change without notice.

Specifications

Expansion Interface	1 x PCIe Mini Card
Touchscreen	Resistive type
Power Supply	10~30VDC (phoenix type)
Dimensions	248 mm (9.76") x 58.3 mm (2.29") x 183 mm (7.2")
Packing Dimensions	390 mm (15.35") x 190 mm (7.48") x 430 mm (16.92")
Weight (net/gross)	3.4 kg (7.49 lb)/5.8 kg (12.78 lb)
Environment	Operating temperature: -20°C ~ +55°C (-4°F ~ 131°F) (with W.T. DRAM/HDD/CF) Storage Temperature: -30°C ~ +80°C (-22°F ~ +176°F) Relative humidity: 10% ~ 95% @ 40°C; non-condensing Operation vibration: 1G, 5-500Hz, random for 2.5" HDD 2G, 5-500Hz, random for CompactFlash™
Certification	CE

* W.T.: Wide Temperature. All W.T. supported products have to be sorted by Axiomtek.

Ordering Information

GOT3846T-832	8.4" SVGA TFT fanless touch panel computer with Intel® Atom™ N2600 (-20°C ~ +55°C)
--------------	--

* Specification and certifications are based on options and may vary.

Optional EOS Installation

Windows® Embedded Standard 7 (32-bit)

Optional OS Installation

Windows® 7 (32-bit)

Overview

Industrial Panel Computers & Monitors

Heavy-duty Fanless Touch Panel Computers

Digital Signage Solutions

Healthcare & Medical Solutions

Open Frame Panel Computers

Accessories

Dimensions

